

ISOMETRIC VIEW

ASSEMBLY

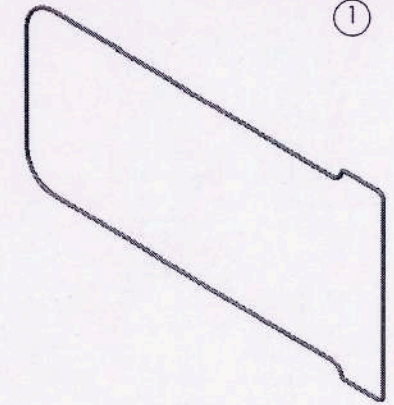
DETAIL INDEX

ITEM NO.	PART NO.	QTY.	DRG. No. / SPECN.	SHEET No.
1	OUTER FRAME	1	2.1.01.15-00	2 OF 8
2	MIDDLE FRAME	2	2.1.01.15-00	3 OF 8
3	LOWER CENTRAL	1	2.1.01.15-00	4 OF 8
4	LOWER SMALL	2	2.1.01.15-00	5 OF 8
5	L- BEND INSIDE	2	2.1.01.15-00	5 OF 8
6	FERRULE -A	1	2.1.01.15-00	6 OF 8
7	FERRULE-B	2	2.1.01.15-00	7 OF 8
8	FERRULE -C	1	2.1.01.15-00	7 OF 8
9	FERRULE -D	1	2.1.01.15-00	7 OF 8
10	FERRULE-E	2	2.1.01.15-00	8 OF 8
11	FERRULE-F	1	2.1.01.15-00	8 OF 8
12	FERRULE -G	1	2.1.01.15-00	8 OF 8

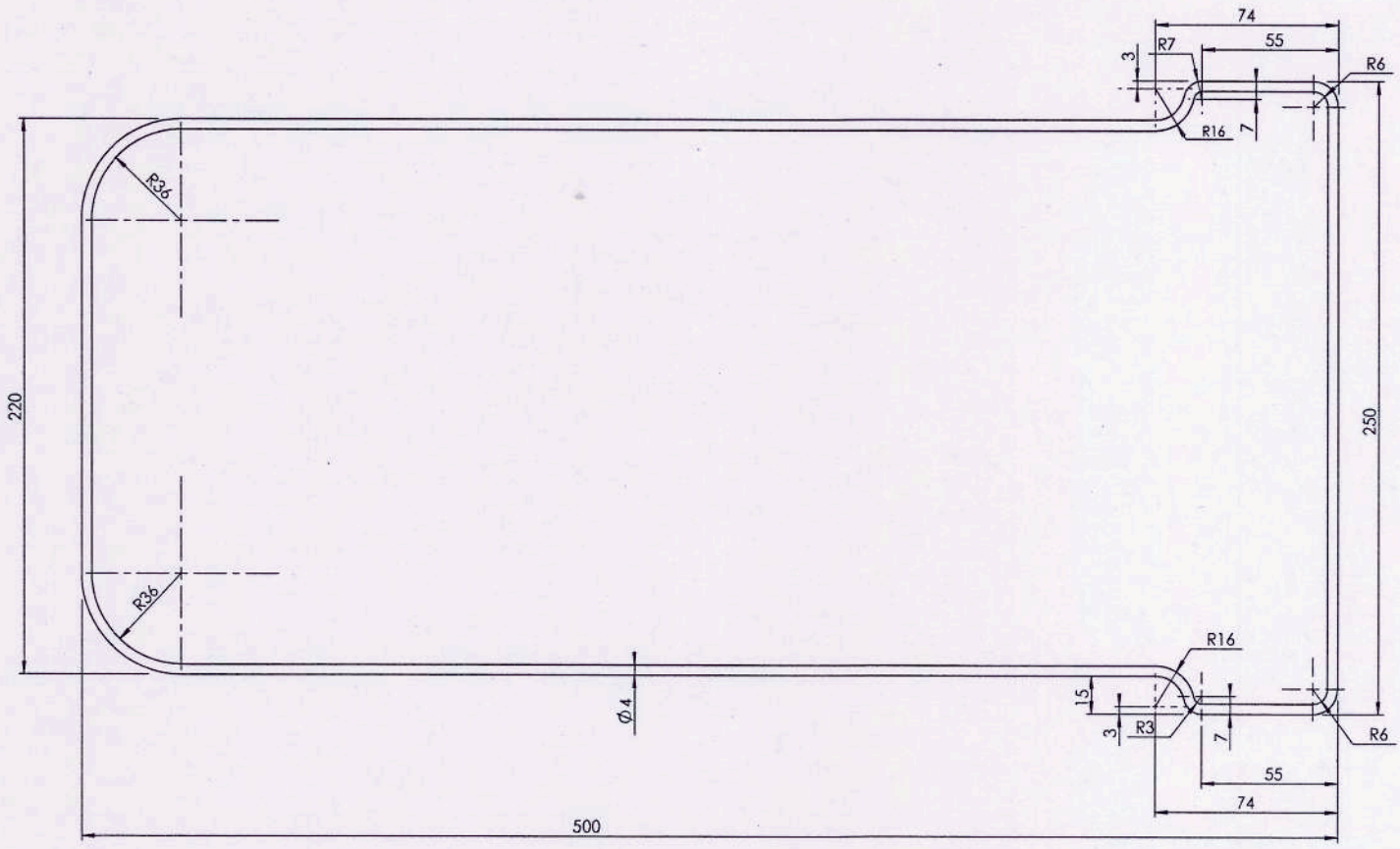
WORKMANSHIP :- TO BE SMOOTHLY FINISHED, CADMIUM PLATED TO A MIN. THICKNESS OF 0.012 mm AND CHROMATE.
 FINISH :- PASSIVATED TO SPECIFICATION I.S. 1572-1968, cd-12.

SCALE:- 1 : 2 : 5	QTY. :- 1 Nos.	A D R D E A G R A	DRN.	PANKAJ YOGESH	 PROJ. OFFICER / GROUP OFFICER
DIMENSIONS IN mm	TOL.:-	GROUP- PAS	CHD.	J. C. DUTTA	
MATERIAL:-	FINISH :- AS ABOVE	MAIN PACK FRAME MAIN D -10 PARACHUTE			APPROVED
HEAT TREATMENT:-					 PROJ. DIRECTOR / GROUP DIRECTOR

1



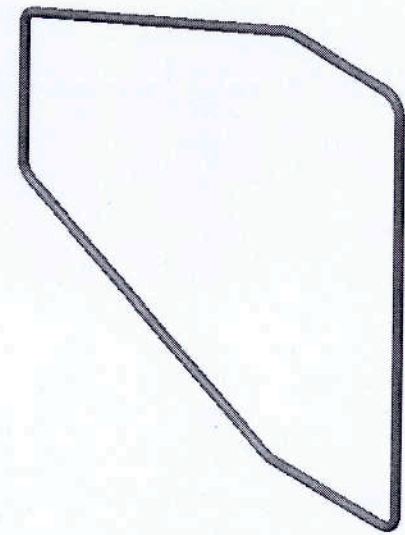
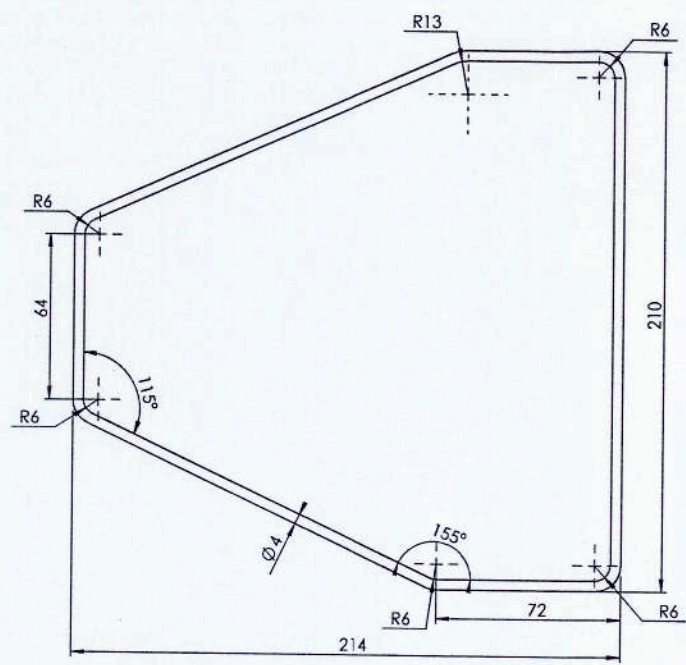
ISOMETRIC VIEW



TOLERANCE :- IS 2102 (PART-1) 1993 MEDIUM
UNLESS OTHERWISE SPECIFIED
PROCESS :- FABRICATION (GEN. ENGG.)

SCALE:- 1:2 / 1:5	QTY. :- 1 No.	A D R D E A G R A	DRN.	PANKAJ YOGESH	<i>[Signature]</i> PROJ. OFFICER./ GROUP OFFICER
DIMENSIONS IN mm		GROUP- PAS	CHD.	J. C. DUTTA	
TOL.:- AS ABOVE		OUTER FRAME PACK FRAME MAIN D -10 PARACHUTE			APPROVED
MATERIAL:- SPRING STEEL WIRE 4mm B.S. 1408 C-1964					<i>[Signature]</i> PROJ. DIRECTOR./ GROUP DIRECTOR
FINISH:-					
HEAT TREATMENT:-					
<input type="checkbox"/> I/C CAD <input type="checkbox"/> GROUP HEAD		DRG. NO. 2.1.01.15-00			

REV.No.	DATE	ZONE	AUTHORITY	BRIEF RECORD	I/C CAD	GROUP HEAD
1						
2						
3						
4						

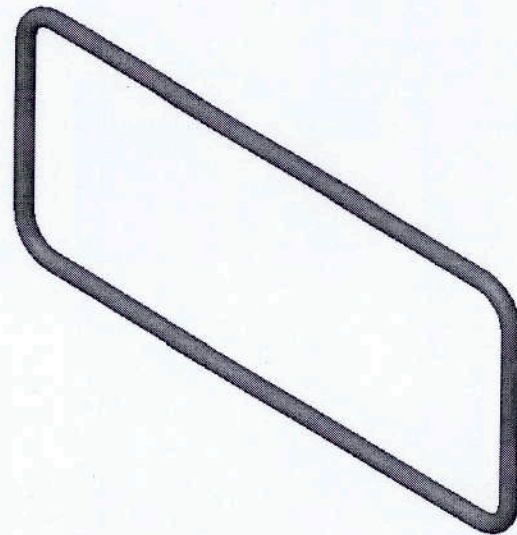
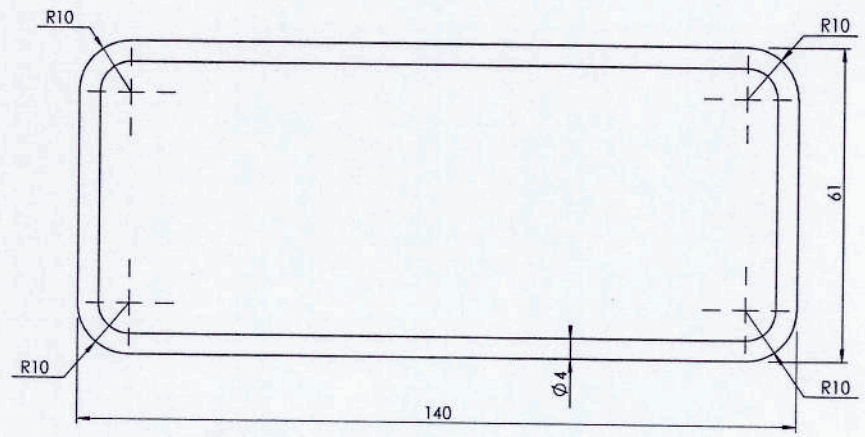


ISOMETRIC VIEW

TOLERANCE :- IS 2102 (PART-1) 1993 MEDIUM
UNLESS OTHERWISE SPECIFIED
PROCESS :- FABRICATION (GEN. ENGG.)

SCALE:- 1 : 2	QTY. :- 2 Nos.	A D R D E AGRA	DRN.	PANKAJ YOGESH	 PROJ. OFFICER / GROUP OFFICER
DIMENSIONS IN mm		GROUP- PAS	CHD.	J. C. DUTTA	
TOL.:- AS ABOVE		MIDDLE FRAME MAIN D -10 PARACHUTE			APPROVED
MATERIAL:- SPRING STEEL WIRE 4mm B.S. 1408C-1964					 PROJ. DIRECTOR / GROUP DIRECTOR
FINISH:-					
HEAT TREATMENT:-					
I/C CAD GROUP HEAD 		DRG. NO.			2.1.01.15-00

REV.No.	DATE	ZONE	AUTHORITY	BRIEF RECORD	I/C CAD	GROUP HEAD
1		2				



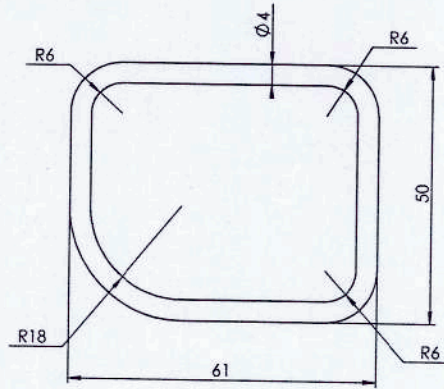
ISOMETRIC VIEW

TOLERANCE :- IS 2102 (PART-1) 1993 MEDIUM
UNLESS OTHERWISE SPECIFIED
PROCESS :- FABRICATION (GEN. ENGG.)

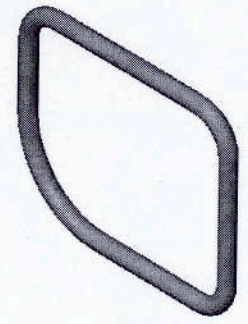
SCALE:- 1 : 1	QTY. :- 1 Nos.	A	D	R	D	E	AGRA	DRN.	PANKAJ YOGESH	 PROJ. OFFICER/ GROUP OFFICER
DIMENSIONS IN mm		GROUP-	PAS	CHD.	J. C. DUTTA	APPROVED				
TOL:- AS ABOVE		LOWER CENTRAL MAIN D -10 PARACHUTE								 PROJ. DIRECTOR/ GROUP DIRECTOR
MATERIAL:- SPRING STEEL WIRE 4mm B.S. 1408 C-1964										
FINISH:-										
HEAT TREATMENT:-										
										DRG. NO.
										2.1.01.15-00

REV.No.	DATE	ZONE	AUTHORITY	BRIEF RECORD	I/C CAD	GROUP HEAD
1		2				

4

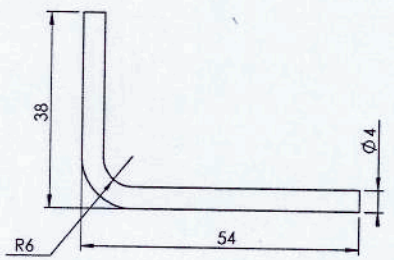


LOWER SMALL

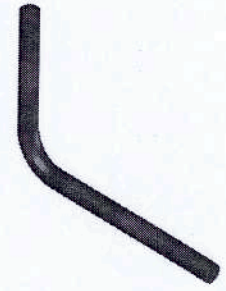


ISOMETRIC VIEW

5



'L' BEND INSIDE

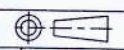


ISOMETRIC VIEW

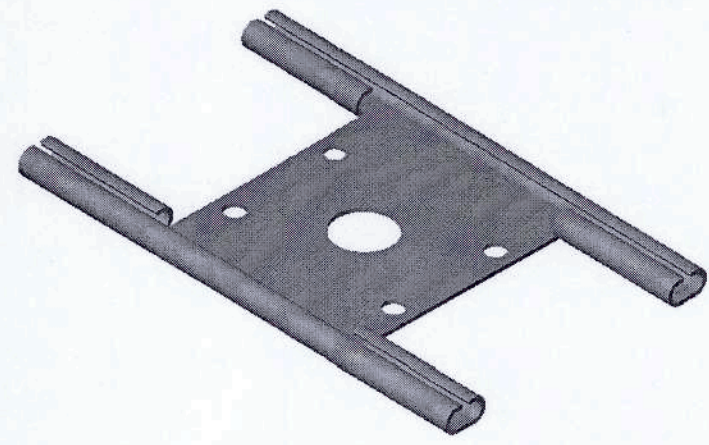
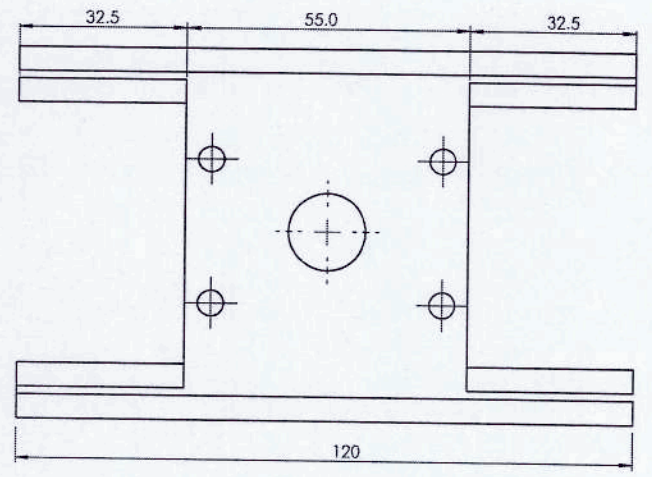
TOLERANCE :- IS 2102 (PART-1) 1993 MEDIUM
UNLESS OTHERWISE SPECIFIED
PROCESS :- FABRICATION (GEN. ENGG.)

SCALE:- 1 : 1	QTY. :- 2 Nos.	A D R D E AGRA	DRN.	PANKAJ YOGESH	 PROJ. OFFICER/ GROUP OFFICER
DIMENSIONS IN mm	TOL.:- AS ABOVE	GROUP- PAS	CHD.	J. C. DUTTA	
MATERIAL:- SPRING STEEL WIRE 4mm B.S. 1408C-1964	FINISH:-	LOWER SMALL & L-BEND INSIDE MAIN D -10 PARACHUTE			APPROVED PROJ. DIRECTOR/ GROUP DIRECTOR
HEAT TREATMENT:-					DRG. NO. 2.1.01.15-00

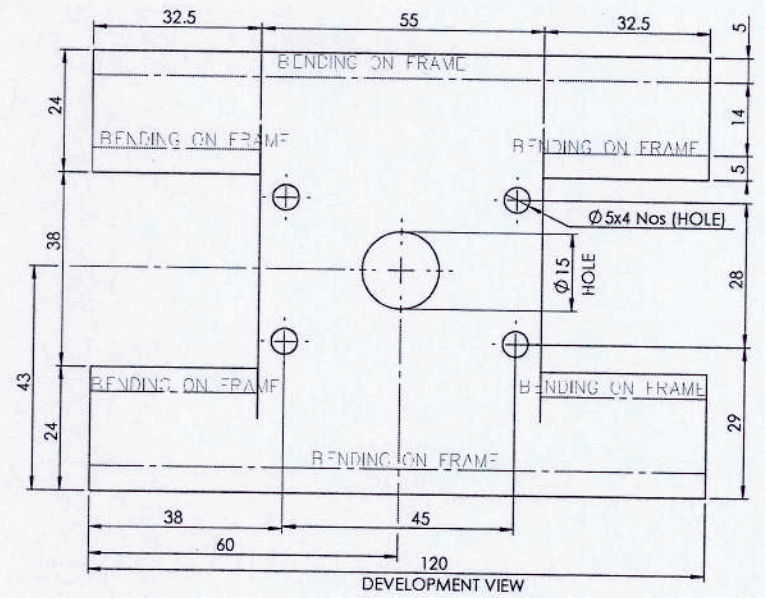
REV.No.	DATE	ZONE	AUTHORITY	BRIEF RECORD	I/C CAD	GROUP HEAD
1		2		3	4	5



6



ISOMETRIC VIEW

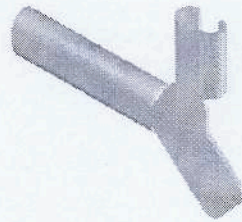
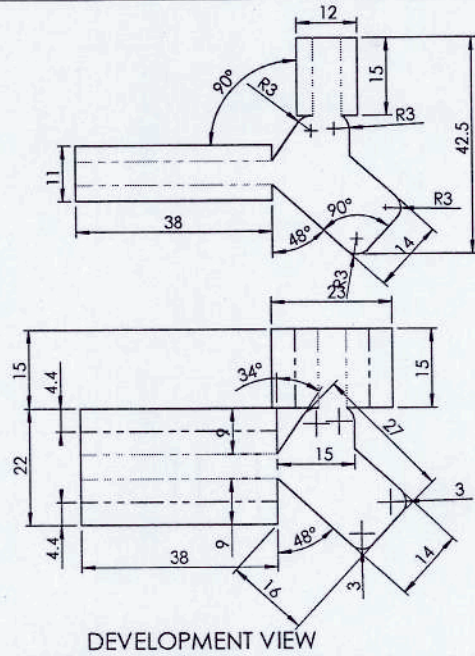


TOLERANCE :- IS 2102 (PART-1) 1993 MEDIUM
UNLESS OTHERWISE SPECIFIED
PROCESS :- FABRICATION (GEN. ENGG.)

NOTE : ENDS OF THE FERRULES TO BE CLOSED AND PRESEER IN.

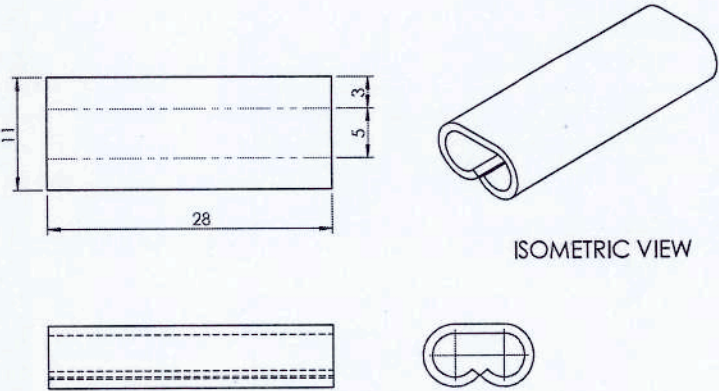
SCALE:- 1 : 1	QTY. :- 1 Nos.	A D R D E AGRA	DRN.	PANKAJ YOGESH	 PROJ. OFFICER / GROUP OFFICER
DIMENSIONS IN mm		GROUP- PAS	CHD.	J. C. DUTTA	
TOL:- AS ABOVE		FERRULE-A MAIN D -10 PARACHUTE			DRG. NO. 2.1.01.15-00
MATERIAL:- MILD STEEL GALVANISED SHEET (208.G) 0.996mm					
FINISH:- PASSIVATED TO SPECIFICATION I.S. 1572-1968,cd-12					
HEAT TREATMENT:-					

REV.No.	DATE	ZONE	AUTHORITY	BRIEF RECORD	I/C CAD	GROUP HEAD
1		2		3	4	5



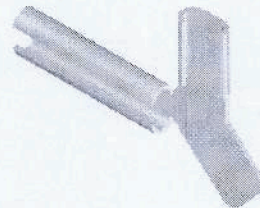
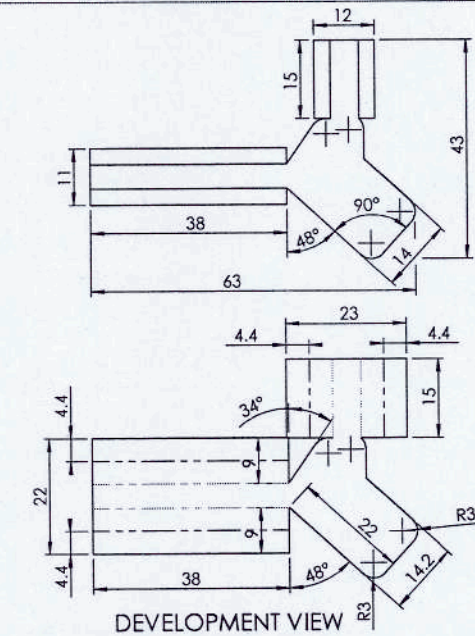
ISOMETRIC VIEW

FERRULE - 'F' QTY. :- 1 Nos



ISOMETRIC VIEW

FERRULE - 'E' QTY. :- 2 Nos



ISOMETRIC VIEW

FERRULE - 'G' QTY. :- 1 Nos

NOTE : ENDS OF THE FERRULES TO BE CLOSED AND PRESSED IN.
TOLERANCE : IS 2102 (PART 1) 1993 MED/IV UNLESS OTHERWISE SPECIFIED
PROCESS : FABRICATION (GEN. ENGG.)

SCALE:- 1 : 1	QTY. :- AS ABOVE	A D R D E AGRA	DRN.	PANKAJ YOGESH	 PROJ. OFFICER/ GROUP OFFICER
DIMENSIONS IN mm	TOL:- AS ABOVE	GROUP- PAS	CHD.	J. C. DUTTA	
MATERIAL:- MILD STEEL GALVANISED SHEET (20BG) 0.996mm	FINISH:- PASSIVATED TO SPECIFICATION IS: 1572-1968,cd-12	FERRULE 'E'-'F'-'G' MAIN D -10 PARACHUTE			APPROVED
HEAT TREATMENT:-					 PROJ. DIRECTOR/ GROUP DIRECTOR
					DRG. NO.
					2.1.01.15-00

REV.No.	DATE	ZONE	AUTHORITY	BRIEF RECORD	<input type="checkbox"/> I/C CAD	GROUP HEAD
1		2		3	4	5

