

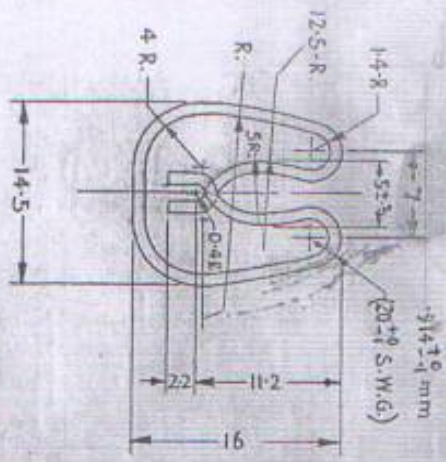
PACKING:-

THE FASTENER LIFT THE DOT CLOTH TO CLOTH SHALL BE PACKED AND DELIVERED IN CARDBOARD CARTON HAVING FOUR COMPARTMENTS. EACH CARTON SHALL CONTAIN ALL THE COMPONENTS REQUIRED FOR 1 GROSS OF THE FASTENERS. EACH COMPARTMENT OF THE CARTON SHALL CONTAIN ONLY ONE TYPE OF THE FOLLOWING COMPONENTS DULY PACKED AND SEALED IN POLYTHENE BAGS.

- (I) RIVET CLINCH
 - (II) WASHER
 - (III) PLATE SOCKET BACK
 - (IV) SOCKET-TOP, SPRING AND BOTTOM DULY ASSEMBLED.
- NO SUCH CARTONS SHALL BE PACKED IN A CWP (DULY LINED WITH PAPER PACKING WATER-PROOF). ONE SAMPLE IN EACH CARTON SHALL BE IDENTIFIED BY A LABEL SHOWING NOMENCLATURE AND CAT. No. OF THE STORE AND ALSO THE TRADE MARK/INITIALS OF THE MANUFACTURER AND THE YEAR OF MANUFACTURE. EACH CARTON SHALL BE MARKED WITH THE INITIALS OF THE MANUFACTURER. BEFORE DESPATCH EACH PACKING CASE SHALL BE LEGIBLY AND INDELIBLY MARKED WITH THE FOLLOWING DETAILS:-
- (I) NOMENCLATURE, CAT. No. OF THE STORE AND THE YEAR OF MANUFACTURE.
 - (II) TOTAL No. OF PACKING CASES AND THE NUMBER OF THE INDIVIDUAL PACKING CASE IN A CONSIGNMENT.
 - (III) No. OF CARTONS IN EACH PACKING CASE AND THE QUANTITY IN EACH CARTON.
 - (IV) BRASS WEIGHT OF THE PACKING CASE IN Kg.
 - (V) ADDRESS OF THE CONSIGNEE.
 - (VI) ADDRESS OF THE CONSIGNOR.

COUNTERSIGNED.  COL. DIRECTOR ADDDE, AGRA.	DATE _____ NAME _____	FASTENER, LIFT THE DOT CLOTH TO CLOTH
WTTN. _____ COMP. _____ GO/D/O. _____ PROOFER _____		APPROVED _____ PRDY. _____ DRG. No. ADDDE/171

MATERIAL :- PHOSPHOR BRONZE WIRE TO SPECN. IS 1385-1966
 GRADE: P Cu Sn 4 HARD



SOCKET SPRING

1-OFF

WORKMANSHIP AND FINISH :- TO BE SMOOTHLY FINISHED, BRIGHT

NICKEL CHROMIUM PLATED TO THICKNESS OF
 NO. SPECN. IS 1058-1958
 THICKNESS OF NICKEL - 0.05 mm (MIN)
 THICKNESS OF CHROMIUM - 0.0025 mm (MIN)

TOLERANCES :- ± 0.4 mm UNLESS OTHERWISE SPECIFIED

FASTENER, LIFT THE DOT CLOTH TO CLOTH

COUNTERSIGNED.		DATE	NAME
 M/H Jais Col. DIRECTOR, AD RDE, AGRA.			
DGN			M.H. Jais
DRN			Sukh Singh
CHD	9-1-71		Zelichan
TRD			
COMP	18-1-73		
G.O. / P.O.	24.7.73		
PROOFFE			
SCALE :- 2:1			
DIMENSIONS IN MILLIMETRES APPROVED  Dy. Dir (Dev)		PROV. DRG. No. AD RDE/171 10/10/73	

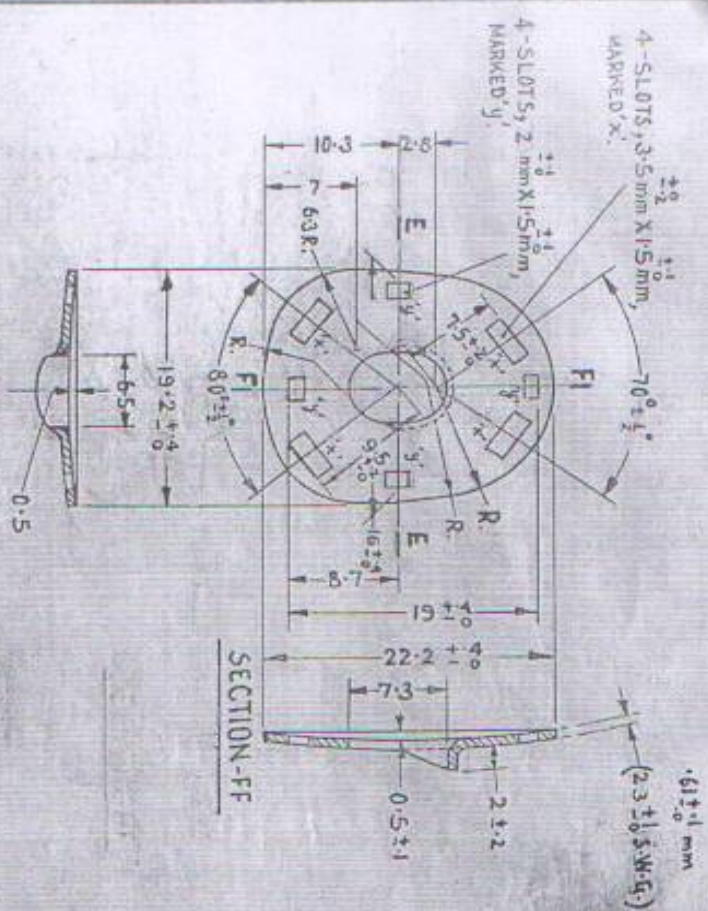
D-016/73

3

MATERIAL :- BRASS TO SPECIFICATION IS: 410-1967
Cu, Zn 40 ANNEALED.

WORKMANSHIP AND FINISH :- TO BE SMOOTHLY FINISHED.
BRIGHT NICKEL CHROMIUM
PLATED TO SPECN IS: 1068-1958
THICKNESS OF NICKEL :- 0.05mm (min)
THICKNESS OF CHROMIUM :- 0.02mm (min)

TOLERANCES :- ± 0.4 mm UNLESS OTHERWISE SPECIFIED



SECTION-EE

SECTION-BOTTOM
1-OFF

SECTION-FF

COUNTERSIGNED.

DGN	DATE	NAME
DRN		M. Hoang
CHD	9/11/71	S. K. S.
TRD		Legh...
COMP	15/11/73	
G.O./D.O	24/1/73	
PRODR		

Director,
ADRDE, AGRA.

SCALE :- 2:1

FASTENER, LEFT THE DOT CLOTH TO CLOTH

THIRD-ANGLE PROJECTION
DIMENSIONS IN MILLIMETRES
APPROVED.
PROY
DRG. No. ADRDE/171

20-12-73
DY. DIRDEN

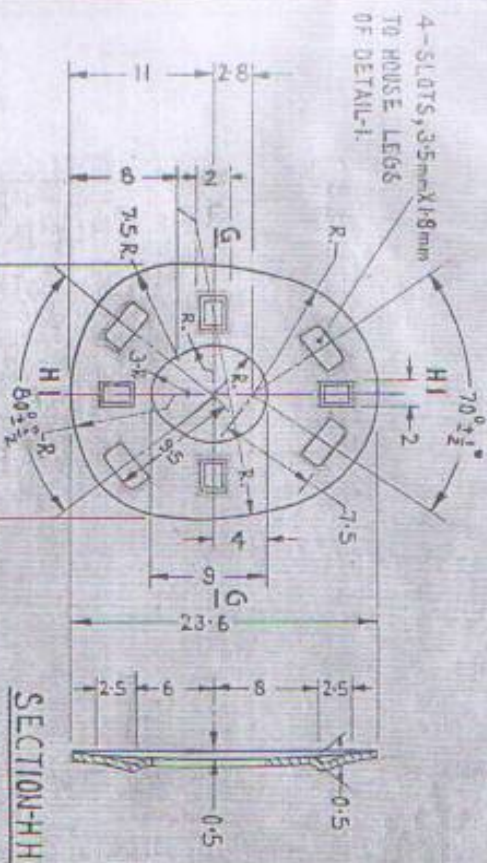
0.0/6/73

MATERIAL :- BRASS TO SPECN. IS: 410 - 1967
Cu Zn 40 ANNEALED.

WORKMANSHIP AND FINISH :-

TO BE SMOOTHLY FINISHED.
BRIGHT NICKEL CHROMIUM
PLATED TO SPECN. IS: 1068 - 1958
THICKNESS OF NICKEL - 0.05 mm (MIN.)
THICKNESS OF CHROMIUM - 0.025 mm
(MIN.)

TOLERANCES :- ± 0.4 mm UNLESS OTHERWISE SPECIFIED.



SECTION-GG

SECTION-HH

PLATE SOCKET BACK

1.0FF

COUNTERSIGNED		DATE		NAMES	
DGN					
DRN					
CHD	9.11.91				
TRD					
COMP	18.11.95				
G.O./D.O.	24.11.95				
PROFFER					

Signature
DIRECTOR,
ADPDE, AGRA.

SCALE: 2:1

FASTENER, LIFT THE DOT CLOTH TO CLOTH

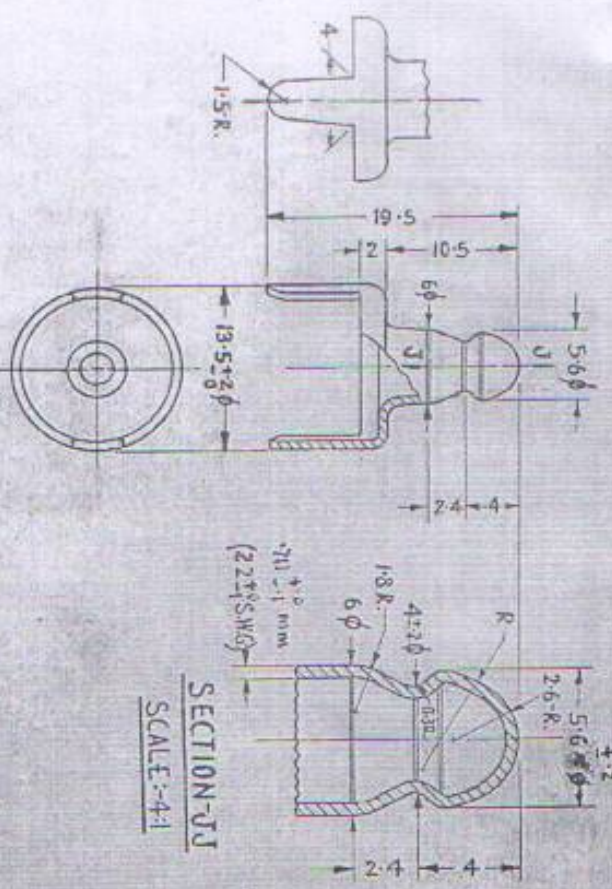
THIRD ANGLE PROJECTION	
DIMENSIONS IN MILLIMETRES	
APPROVED	<i>Signature</i>
PROV	DY. DIR. (DEX)
DRG No. ADPDE/171	(2)

0.0/16/13

MATERIAL :- BRASS TO SPECN. IS : 410 - 1967.
Cu Zn 40 ANNEALED.

WORKMANSHIP AND FINISH :- TO BE SMOOTHLY FINISHED.
BRIGHT NICKEL CHROMIUM
PLATED TO SPECN. IS: 1058 - 1958
THICKNESS OF NICKEL - 0.05mm (MIN.)
THICKNESS OF CHROMIUM - 0.0025mm
(MIN.)

TOLERANCES :- ± .4 mm UNLESS OTHERWISE SPECIFIED.



RIVET CLINCH (PRONG TYPE)
1-0FF

COUNTERSIGNED	DATE	NAME
DGN		M. H. Gupta
DRN		
CHD	31.12.71	Indra S. S.
TRD		Indra S. S.
COMP	18-1-73	
G.O. NO.	35-1973	
PRO. OFFR.		

M. H. Gupta
DIRECTOR,
ADPDE, AGRA.

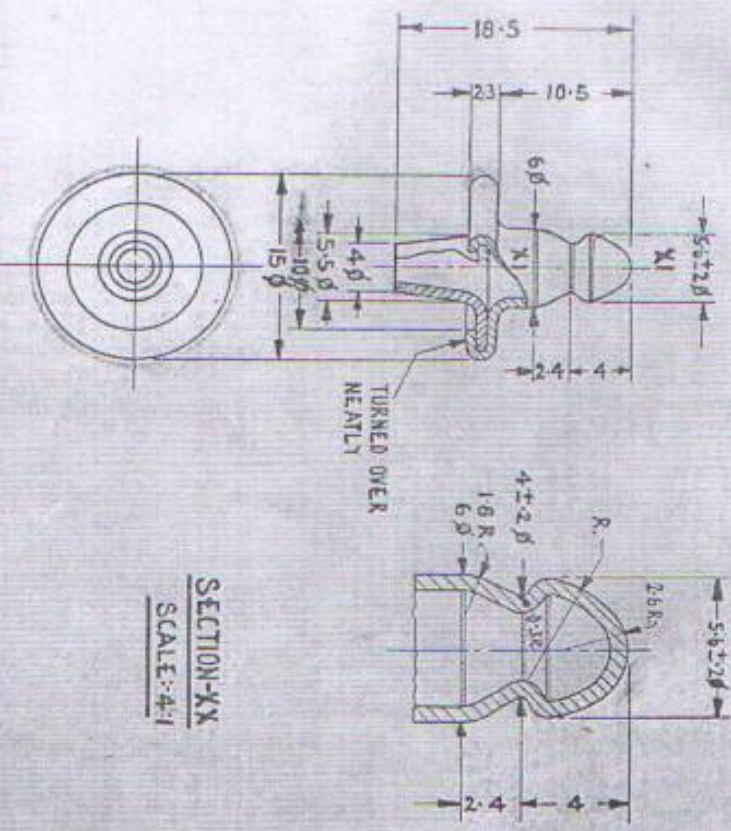
SCALE :- 2:1 & 4:1

FASTENER, LIFT THE DOT CLOTH TO CLOTH

THIRD-ANGLE PROJECTION
DIMENSIONS IN MILLIMETRES
APPROVED
<i>M. H. Gupta</i> DY. DIR. (DEV)
PROV.
DRG. No. ADPDE/171

0-0/16/73

5



SECTION-KX
SCALE: 4:1

RIVET CLINCH (ALTERNATIVE RIVET-TYPE DESIGN)
1-OFF

MATERIAL :-

BRASS SHEET (22 ± 1 S.W.G.) TO SPECN. IS: 410-1967
Cu Zn 40 ANNEALED.
THICKNESS: 0.71 ± 0.03 mm

WORKMANSHIP AND FINISH :-

TO BE SMOOTHLY FINISHED, BRIGHT NICKEL CHROMIUM PLATED TO SPECN. IS: 1068-1958
THICKNESS OF NICKEL: 0.025 mm (MIN.)
THICKNESS OF CHROMIUM: 0.0025 mm (MIN.)

TOLERANCES :-

± 0.4 mm UNLESS OTHERWISE SPECIFIED.

COUNTERSIGNED.

DGN	DATE	NAME
DRN		
CHD	27-8-75	DR. DIR. (OEY)
TRD		
COMP	12-9-75	
G.O/D.O		
PRO.OFFR.		

SCALE: 2:1, 4:1

Signature
M/V
DIRECTOR,
COL.
ADRDE, AGRA.

FASTENER, LIFT THE DOT CLOTH TO CLOTH

THIRD-ANGLE PROJECTION
DIMENSIONS IN MILLIMETRES
APPROVED
PROV.
DRG. No. ADRDE/171

DR. DIR. (OEY)
12-9-75

D.O. 1/73

MATERIAL :- BRASS TO SPECN. IS : 410-1967

WORKMANSHIP AND FINISH :- TO BE SMOOTHLY FINISHED

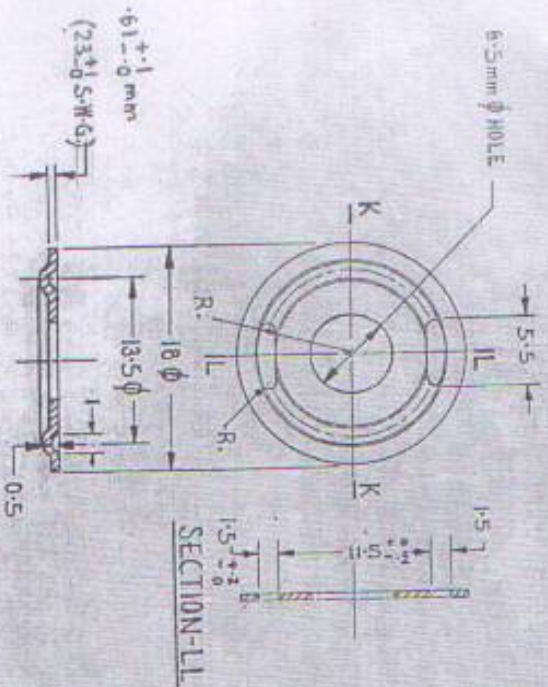
BRIGHT NICKEL CHROMIUM PLATED.

NICKEL THICKNESS :- TO BE AS PER SPECN.

TO SPECN IS : 1068-1958.

THICKNESS OF NICKEL : 005mm (MIN.)

THICKNESS OF CHROMIUM : 00025mm (MIN.)



SECTION-KK

SECTION-LL

TOLERANCES :- ± .4 mm UNLESS OTHERWISE SPECIFIED.

WASHER (FOR PRONG TYPE RIVET CLINCH)

1-OFF

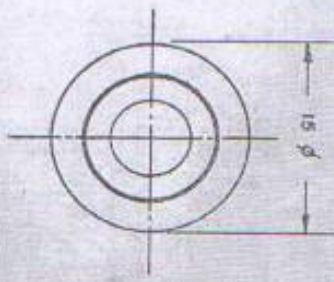
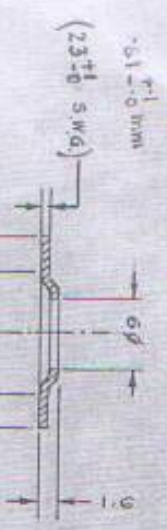
COUNTER SIGNED		DATE	NAME
DGN			
DRN			M. HONG
CHD	24/11/73		S. K. S.
TRD			L. S. S.
COMP	44-73		
G/D/D/O	24/11/73		
PROFFER			

SCALE :- 2:1	FASTENER, LIFT THE DOT CLOTH TO CLOTH
--------------	---------------------------------------

THIRD ANGLE PROJECTION	APPROVED.
DIMENSIONS IN MILLIMETRES	
PROV	
DRG. NO. ADDRDE / 171	

[Signature]
 Col.
 W/A DIRECTOR,
 ADDRDE, AGRA.

D-0/16 175



MATERIAL :-
BRASS TO SPECN. IS : 410-1967.

WORKMANSHIP & FINISH :-

TO BE SMOOTHLY FINISHED. BRIGHT NICKEL CHROMIUM PLATED
TO SPECN. IS: 1068-1958.
THICKNESS OF NICKEL .005 mm (MIN.)
THICKNESS OF CHROMIUM .00025 mm (MIN.)

TOLERANCES :-
± 0.4 MM UNLESS OTHERWISE SPECIFIED.

WASHER (FOR RIVET TYPE RIVET CLINCH)
1-OFF

CONTRERSIGNED,		DATE	NAME
DGN.			
DRN.			
CHD.	21-5-D		
TRD.			
COMP.	13/13		
GOLD/D0			
PRO. OFFN			

[Signature]
COL.
DIRECTOR
ADRDE, AGRA.

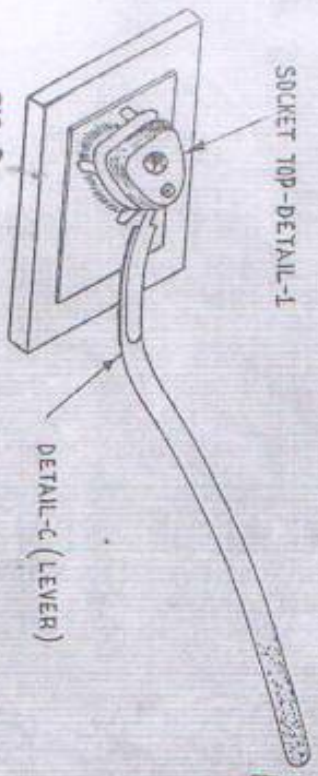
SCALE:- 2:1

FASTENER, LIFT THE DOT CLOTH TO CLOTH

THIRD- ANGLE PROJECTION
DIMENSIONS IN MILLIMETRES
APPROVED.
<i>[Signature]</i> DY DIR (DEV.)
PROV.
DRG. No. ADRDE/171

MATERIAL :- FOR DETAILS A, B & C - MILD STEEL.

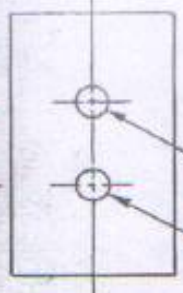
SOCKET TOP-DETAIL-1



DETAIL-C (LEVER)

FIG:2

SIZE AND POSITION OF THE HOLES TO SUIT THE LEGS OF DETAIL-5



DETAIL-A

SHAPE AND DIA. TO SUIT DETAIL-5 EXACTLY



DETAIL-B



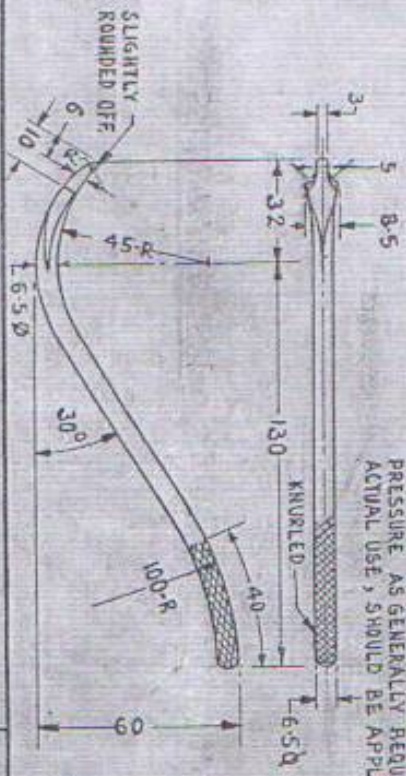
RIVET CLINCH-DETAIL-5

DETAIL-B

DETAIL-A

FIG:1

PERFORMANCE TEST :- FASTENERS ARE TO BE TESTED IN A TEST RIG FOR THEIR PERFORMANCE. ONE SUCH RIG HAS BEEN SHOWN IN THIS DRAWING.
 HOLD THE RIVET CLINCH (DETAIL-5) FIRMLY BETWEEN 'A' AND 'B' AS SHOWN IN FIG:1 WITH THE LEFT HAND. FIT THE SOCKET ON TO IT AS IN FIG:2. TRY TO OPEN/DISENGAGE THE SOCKET BY LIFTING IT FROM ALL SIDES WITH THE HELP OF A LEVER (DETAIL-C, FIG-2). THE SOCKET SHOULD DISENGAGE WHEN LIFTED FROM DOT SIDE ONLY. IT SHOULD NOT OPEN WHEN LIFTED FROM ANY OTHER SIDE. JUDICIOUS AMOUNT OF PRESSURE AS GENERALLY REQUIRED TO LIFT IT DURING ACTUAL USE, SHOULD BE APPLIED.



DETAIL-C (LEVER)

CONTRACTS/SHIELD-
 21-11-2022
 DIRECTOR,
 ADDRDE, AGRA.

DGN	DATE	NAME
DRN		Shreyas
CHD	5-7-22	KASHI
TRD		Madhavi
CHMP	7-7-22	
GO/DO		
PRO/OPFR		

SCALE :- N.T.S.

FASTENER, LIFT THE DOT CLOTH TO CLOTH

THIRD-ANGLE PROJECTION
DIMENSIONS IN MILLIMETRES
APPROVED
PROV.
DRG. No. ADDRDE/171