

800500-5055
D.S. NO.

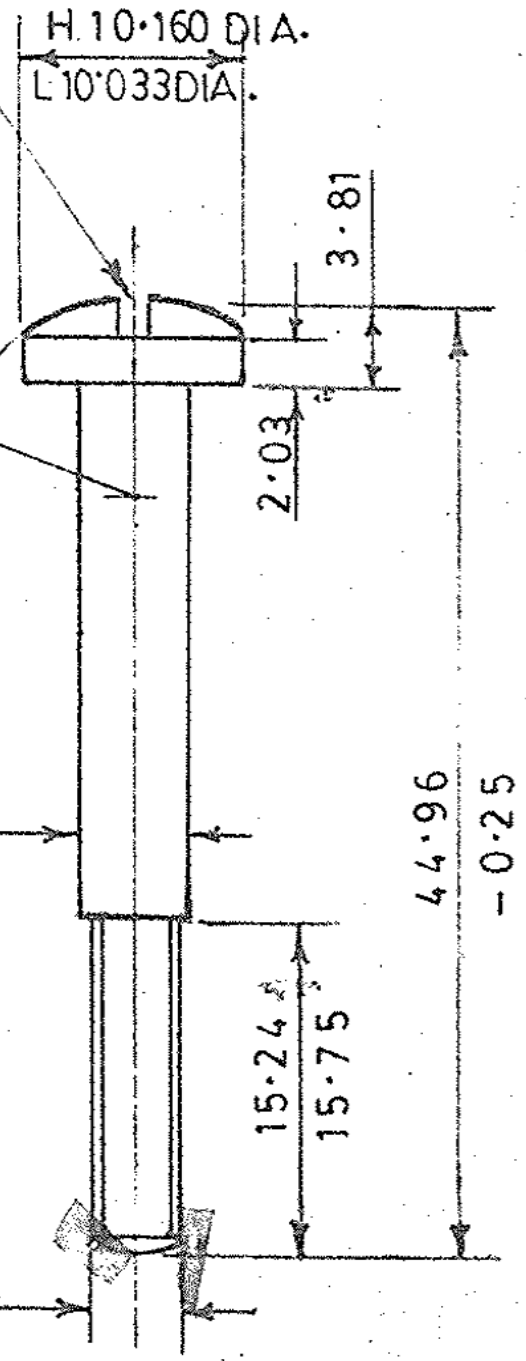
DIMNS. ARE IN m.m.

SCREW DRIVER SLOT
1.27 WIDEX 2.03 DEEP.

R
SPHERICAL

H 4.928 DIA.
L 4.877 DIA.

NO.10(0-190)
X 32 NF-2A



NOTE :-

FOR EXPLANATION OF DETAILS WHEREVER NOT SPECIFIED REFER D.D.

NOTE SHEET NO.3 (LATEST ISSUE).

FOR SPECIFICATIONS LATEST ISSUE SHOULD BE FOLLOWED.

METRIC

8/9

ICR 1196

03-04-99	24312 - SA	PROFORMA CHANGED, NEG. RE-TRACED AND DRG. RE-SEALED.	APR 8	Rev. 1	DACT.
		PREVIOUS D.C. NOS. 15037-SA, 15587-SA, 19202-SA, 21340-SA, 21519-SA, 22302-SA AND 22759-SA.		COPY	COPY
DATE	AUTHY.	BRIEF RECORD	ZONE	I/C, D.O.	G.O.
SEALED :- D.C. NO. 15037-SA, DATED 15-2-77					
DRN.	CHD.	TRD. <i>Hehatayee</i>	COMP.	<i>M. Sankar</i>	
SCALE :- 2:1		EST. MASS	AHSP. CQA(SA), ICHAPUR		
DT. 03-4-99	<i>Arul</i>	APPROVED. DT. 19.6.67	1005-001501, 1005-001502, 1005-001503 & 1005-007723.		
	I/C, D.O.	NEG. RE-TRACED.			
MATERIAL :- BS:970 PT.1 SEC.3 Gr709 M-40					
H.T./HARDNESS :- 300-350 H.V.(47-52 HRD.)					
PROTECTIVE PHOSPHATE TO SPECN. JSS:0465-01-					
FINISH :- 1988 CLASS I, OIL FINISH#.					
NOMENCLATURE :- SCREW HAND GUARD					
D.S. CAT. NO.			5305-005008		