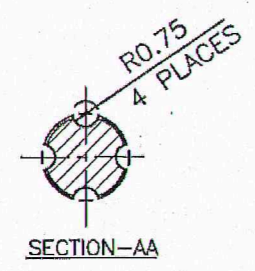
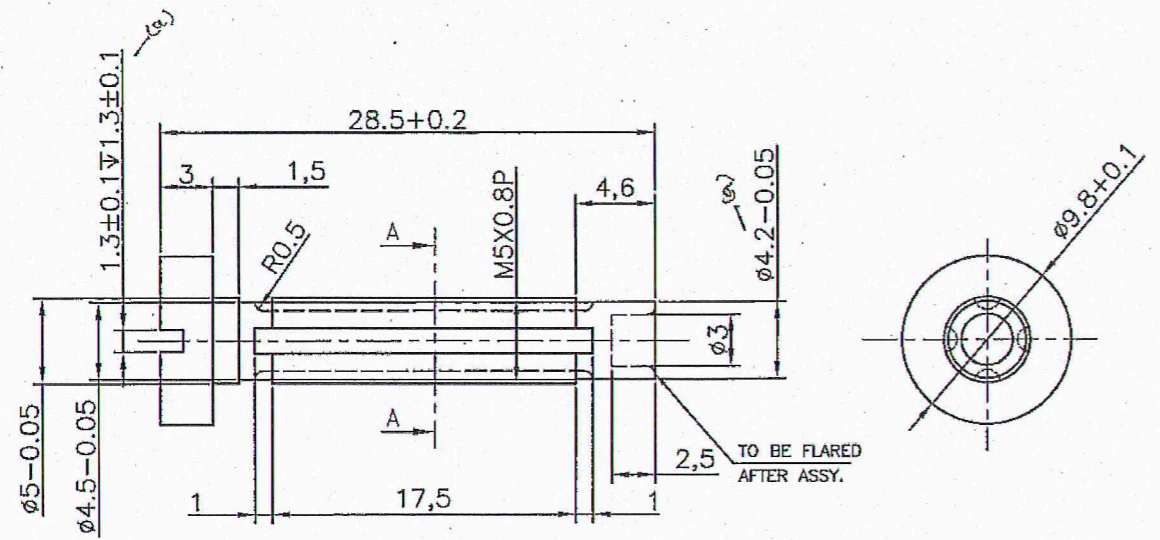


13

DIMENSIONS ARE IN mm.
 UNTOLERATED DIMNS. AS PER IS : 2102 (MED)
 SHARP CORNERS SHOULD BE BLUNT TO R 0.5



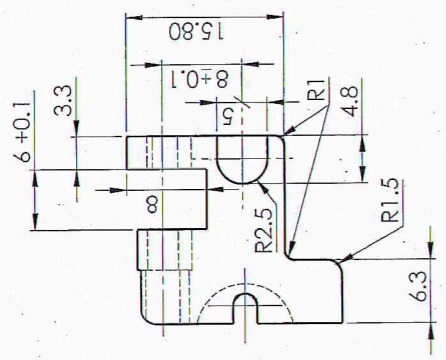
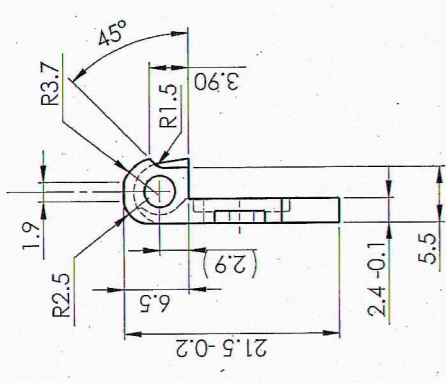
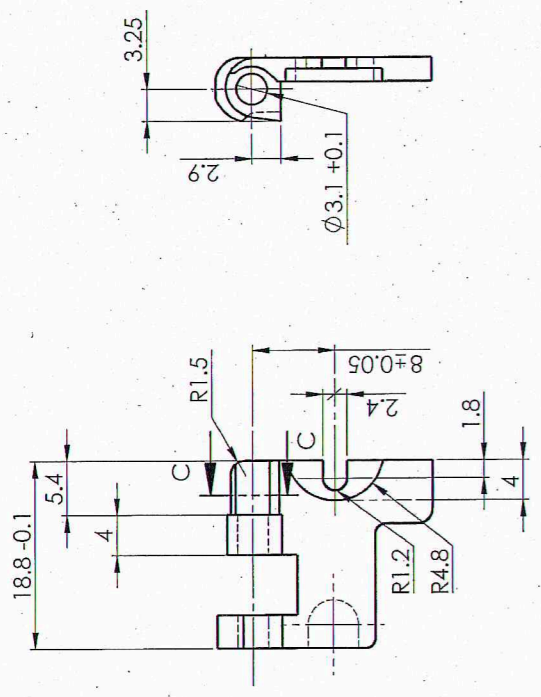
UN CONTROLLED COPY
 CERTIFIED CORRECT COPY OF APPROVED
 DRAWINGS AT THIS DATE. 23/01/24.
 DESIGN & DRAWING OFFICE,
 ORDNANCE FACTORY, TIRUCHIRAPPALI-620 016.

NOTE:
 REMOVE ALL SHARP EDGES AND BURRS
 DIMENSIONS ARE TO BE READ AS APPLYING AFTER PROTECTIVE FINISH

MATERIAL:
 STEEL TO BS:970 PT-1,1983 GD.070 M55 OR (EN-9) OR
 STEEL TO BS:970 PT-1,1983 GD.080 M40 OR (EN-8)

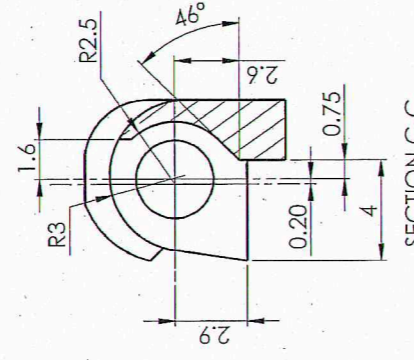
PROTECTIVE FINISH:
 PHOSPHATED TO SPECN.JSS-0465-01-1994,CLASS-II,OIL FINISH

PART NO.	DESCRIPTION	NO OFF	MATERIAL	TREATMENT	REMARKS
a) 03/19 1/6/19 AMENDMENTS	SIGNATURE & DATE DRAWN: <i>A. N. N.</i> CHECKED: <i>Rajom</i> HOS/DDO: <i>Rajom</i> NODAL OFFICER/ FOR MGL. OFFICER/ D&DO: <i>[Signature]</i>	SUB: BACK SIGHT SCREW FOR: SIGHT ASSY OF: TAR UBGL DES. REF. NO. DRG. NO. 36P 1312*			SCALE: N.T.S. STORE NO. OPERATION NO.
	SIGN. & DATE: <i>[Signature]</i> 1/6/19 APPROVED ON:	ORDNANCE FACTORY TIRUCHIRAPPALI			SHEETS: 1 SHEET NO: 1



UN CONTROLLED COPY
 CERTIFIED CORRECT COPY OF APPROVED
 DRAWINGS AT THIS DATE 22/01/24
 DESIGN & DRAWING OFFICE,
 ORDNANCE FACTORY, TIRUCHIRAPPALI-620 016.

MATERIAL:-
 STEEL TO BS:970 PT-1,1983 GD.070 M55 OR (EN-9) OR
 STEEL TO BS:970 PT-1,1983 GD.080 M40 OR (EN-8)



SECTION C-C

HARDNESS:- 300 To 350 HV
 PROTECTIVE FINISH :- PHOSPHATED TO SPEC:
 JSS:0465-01-1994 CLASS-II OIL FINISH.
 DIMENSIONS ARE IN mm.
 UNTOLERATED DIMENSIONS AS PER IS:2102(MED)

TRACED	SIGNATURE & DATE:	SUB: BACK SIGHT	SCALE: NTS
RE-DRAWN	<i>V. J. Subbar</i>	FOR: SIGHT ASSY	STORE DRG. NO.
CHECKED		OF: TAR UBGL	OPERATION NO.
HOS/D&DO		DES. REF. NO.	
OFFICER/PROJECT	<i>P. S. Sathya</i>	DRG. No.: 36P 1313 *	
OFFICER/D&DO		ORDNANCE FACTORY	
APPROVED ON:		TIRUCHIRAPPALI-16.	

AMENDMENTS & DATE
 DA. NO 05/20
 Dt. 20/10/20
 SIG. & DATE

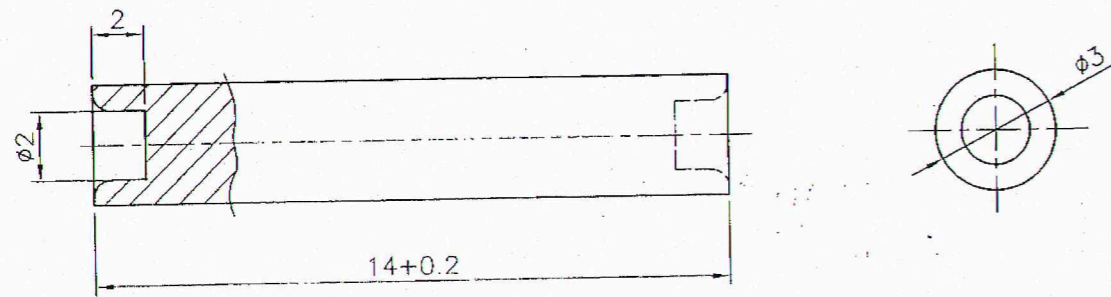
1A

8
7
6
5
4
3
2
1

A B C D E F

DIMENSIONS ARE IN mm.
 UNTOLERATED DIMNS. AS PER IS : 2102 (MED)
 SHARP CORNERS SHOULD BE BLUNT TO R 0.5

UN CONTROLLED COPY
 CERTIFIED CORRECT COPY OF APPROVED
 DRAWINGS AT THIS DATE. 22/01/24
 DESIGN & DRAWING OFFICE,
 ORDNANCE FACTORY, TIRUCHIRAPPALI - 620 016.



NOTE:

REMOVE ALL SHARP EDGES AND BURRS
 DIMENSIONS ARE TO BE READ AS APPLYING AFTER PROTECTIVE FINISH

MATERIAL:

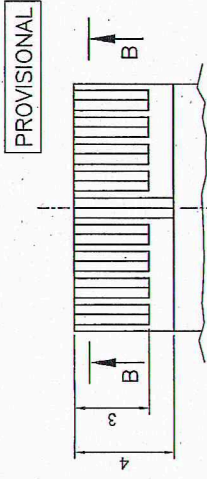
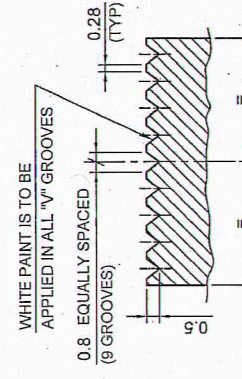
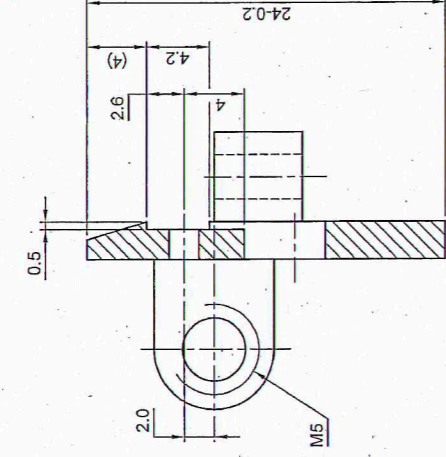
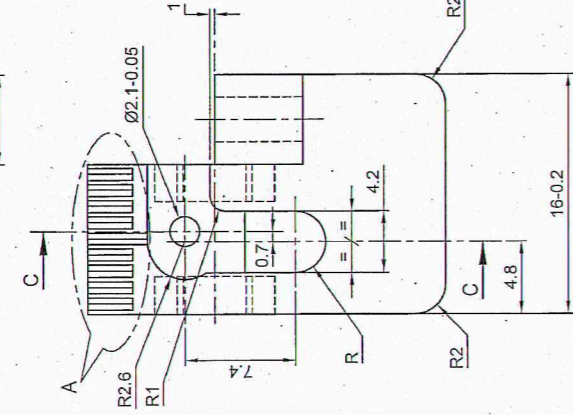
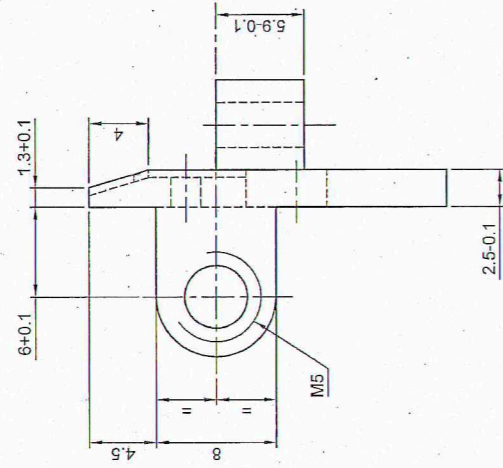
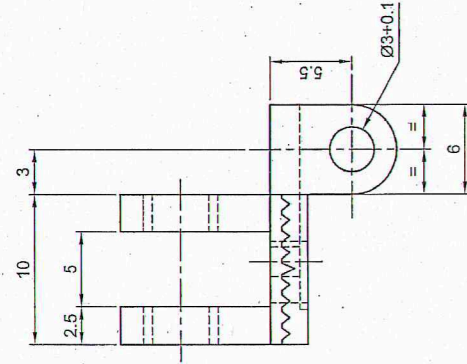
STEEL TO BS:970 PT-1,1983 GD.070 M55 "T" CONDITION OR (EN-9) OR
 STEEL TO BS:970 PT-1,1983 GD.080 M40 "T" CONDITION OR (EN-8)

PROTECTIVE FINISH:

PHOSPHATED TO SPECN.JSS--0465--01--1994,CLASS--II,OIL FINISH

PART NO.	DESCRIPTION	NO OFF	MATERIAL	TREATMENT	REMARKS
	SIGNATURE & DATE		SUB: BACK SIGHT RIVET PIN		SCALE: N.T.S
	DRAWN		FOR: SIGHT ASSY		STORE NO.
	CHECKED <i>A. Laksh</i>		OF: TAR UBGL		OPERATION NO.
	HOS/DDO <i>P. Jayan</i>		DES. REF. NO.		
	NODAL OFFICER/ FOR MGL. <i>P. Jayan</i>		DRG. NO. 36P 1314		SHEETS: 1
	OFFICER/ D&DO		ORDNANCE FACTORY TIRUCHIRAPPALI		SHEET NO: 1
AMENDMENTS	SIGN. & DATE	APPROVED ON:			

DIMENSIONS ARE IN mm.
 UNTOLERATED DIMNS. AS PER IS : 2102 (MED).
 SHARP CORNERS SHOULD BE BLUNT TO R 0.5



UN CONTROLLED COPY
 UNIFIED CORRECT COPY OF APPROVED
 DRAWINGS AT THIS DATE: 25/01/24
 DESIGN & DRAWING OFFICE,
 ORDNANCE FACTORY, TIRUCHIRAPPALI - 620 016.

MATERIAL:
 STEEL TO BS:970 PT-1,1983 GD.070 M55 OR (EN-9) OR
 STEEL TO BS:970 PT-1,1983 GD.080 M40 OR (EN-8)

SECTION - CC

SECTION - BB

DETAIL - A

PROVISIONAL

SIGNATURE & DATE:		SUB: BACK SIGHT SUPPORT PLATE		SCALE	
TRACED		FOR: SIGHT ASSY	NTS		
DRAWN	<i>V. Balu</i>	OF: TAR UBGL	STORE DRG.NO.	---	
CHECKED		DES. REF. NO.	OPERATION NO.		---
HOS/D&DO	<i>P. Jagan</i>	DRG. No.:	36P 1315 *		
OFFICER/PRODN.		ORDNANCE FACTORY		SHEETS: 1	
OFFICER/D&DO		TIRUCHIRAPPALI-16.		SHEET No.: 1	
APPROVED ON:				8	

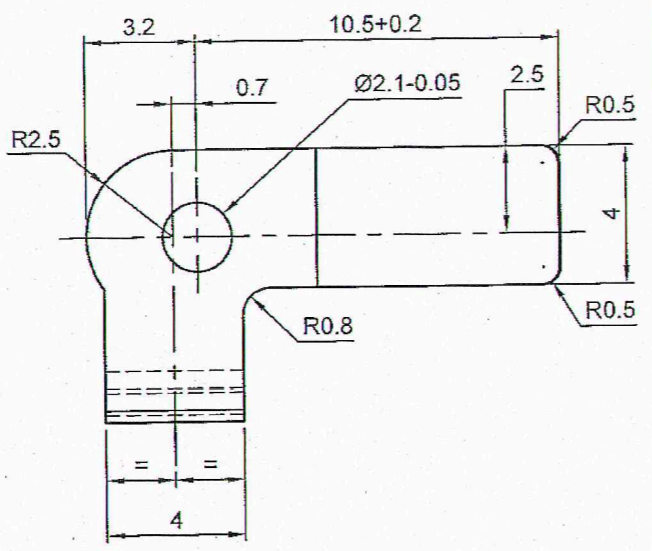
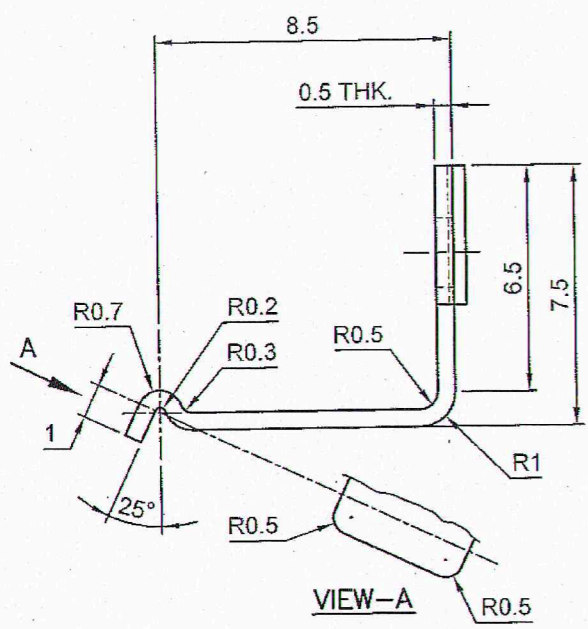
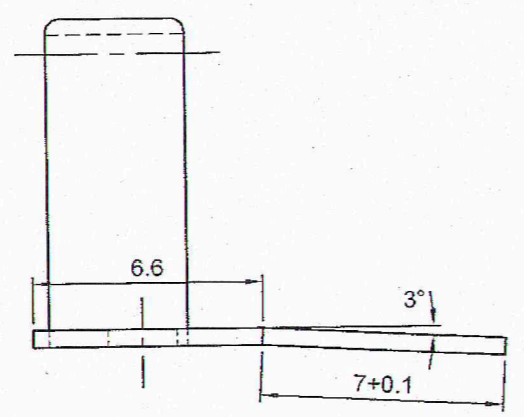
AMENDMENTS & DATE	SIG.
DA No. 03/20 20/12/16	<i>[Signature]</i>

NOTE:
 DIMENSIONS ARE TO BE READ AS APPLYING AFTER PROTECTIVE FINISH
 HARDNESS:-- 300-350 HV
 PROTECTIVE FINISH:
 PHOSPHATED TO SPECN. JSS-0465-01-1994, CLASS-II, OIL FINISH

IN AVT/24/D

16

DIMENSIONS ARE IN mm.
 UNTOLERATED DIMNS. AS PER IS : 2102 (MED)
 SHARP CORNERS SHOULD BE BLUNT TO R 0.5



VIEW-A

MATERIAL:
 STEEL TO BS:1449, PT-1,1983 CS-80
 HARDNESS:- 475-550 H.V

PROTECTIVE FINISH:
 PHOSPHATED TO SPECN.JSS-0465-01-1994,CLASS-II,OIL FINISH

UN CONTROLLED COPY
 CERTIFIED CORRECT COPY OF APPROVED
 DRAWINGS AT THIS DATE 23/01/24
 DESIGN & DRAWING OFFICE,
 ORDNANCE FACTORY, TIRUCHIRAPPALI-620 016.

PART NO.	DESCRIPTION	NO OFF	MATERIAL	TREATMENT	REMARKS
	SIGNATURE & DATE				SCALE: N.T.S
	DRAWN				STORE NO.
	CHECKED <i>R. Gow</i>				OPERATION NO.
	HOS/DDO <i>P. Jahn</i>				
	NODAL OFFICER/ FOR MGL.				
	OFFICER/ D&DO				
	SIGN. & DATE				
	APPROVED ON.				

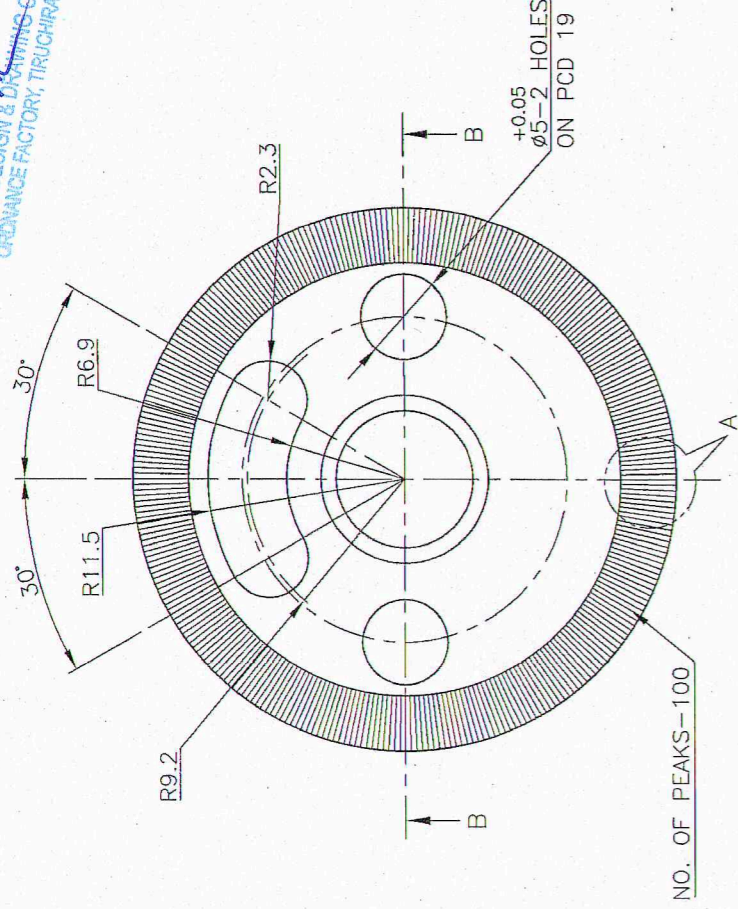
ORDNANCE FACTORY
 TIRUCHIRAPPALI



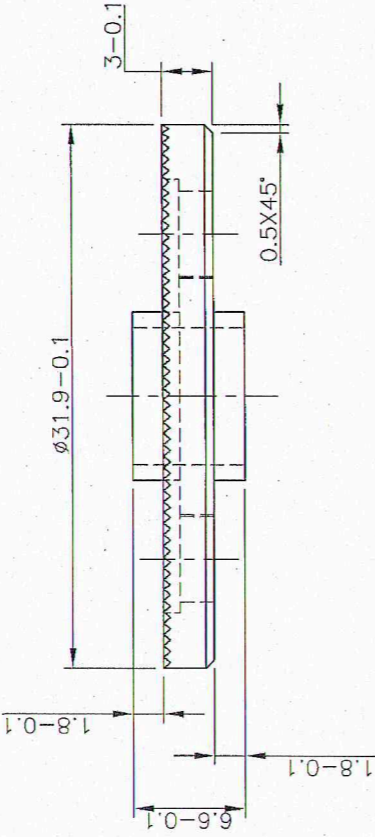
SHEETS: 1
 SHEET NO: 1

DIMENSIONS ARE IN mm.
 UNTOLERATED DIMNS. AS PER IS : 2102 (MED)
 SHARP CORNERS SHOULD BE BLUNT TO R 0.5

UN CONTROLLED COPY
 CERTIFIED CORRECT COPY OF APPROVED
 DRAWINGS AT THIS DATE. 23/01/24
 DESIGN & DRAWING OFFICE,
 ORDNANCE FACTORY, TIRUCHIRAPPALLI-620 016.

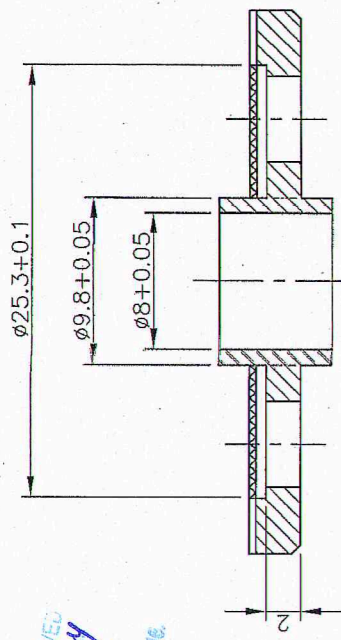


NO. OF PEAKS-100

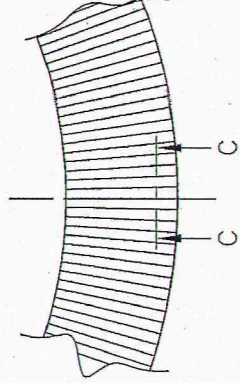


NOTE:

DIMENSIONS ARE TO BE READ AS APPLYING AFTER PROTECTIVE FINISH
 PROTECTIVE FINISH:
 PHOSPHATED TO SPECN.JSS-0465-01-1994, CLASS-II, OIL FINISH



SECTION-BB



NO. OF PEAKS-100
 0.5 DEPTH

SECTION-CC

DETAIL-A
 (ENLARGED SCALE)

MATERIAL:
 STEEL TO BS:970 PT-1, 1983 GD.070 M55 OR EN-9
 HARDNESS:- 300-350 HV

PART NO.	DESCRIPTIONS	NO OFF	MATERIAL	TREATMENT	REMARKS
TRACED	SIGNATURE & DATE.				SCALE NTS
DRAWN			SUB: SIGHT HOUSING RING		STORE DRG.NO.
CHECKED			FOR: SIGHT ASSY		OPERATION NO.
HOS/D&DO			OF: TAR UBGL		SHEETS: 1
OFFICER/PRODN.			DES. REF. NO.		SHEET No.: 1
OFFICER/D&DO			DRG. No.: 36P 1317		
APPROVED ON. 28.08.2018			ORDNANCE FACTORY TIRUCHIRAPPALLI-16.		
SIG. & DATE					
AMENDMENTS					