

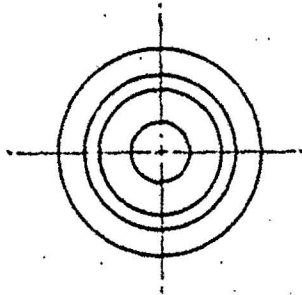
802 X 0

PART No.

DRG. CONVENTIONS CONFORM TO IS: 696

DIMENSIONS ARE IN mm.

DCI. 18749-A



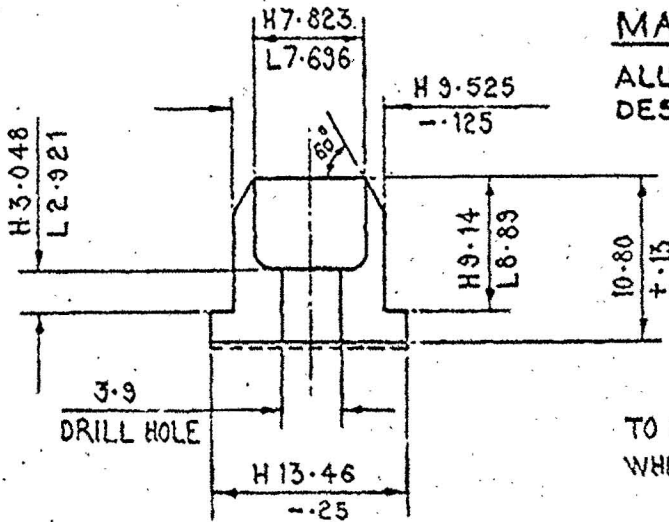
NOTES:-

TOLERANCE ON UNTOLERANCED DIMNS.
FOR ONE DECIMAL PLACE ± 0.13
FOR TWO OR MORE DECIMAL PLACES ± 0.13

TOLERANCE ON UNTOLERANCED ANGLE
FOR DEGREES $\pm 30'$
FOR DEGREE & MINUTE $\pm 5'$

MATERIAL:-

ALUMINIUM ALLOY BS: 1474:1972
DESIGNATION 2014A, CONDITION TB.



TO BE LACQUERED
WHERE SHOWN THUS -----

28-01-14	DGQA. S.O. VOL-II CHAP 10 PARA 47 (a)	DRG. SCAN & EDIT WITHOUT CHANGE. NEGATIVE REPLACED IN SUPERSESSION OF EXISTING DILAPIDATED DRG.			<i>Brs</i>
		PREVIOUS DC. Nos. 18749-A, 19628-A, 20388-A, 20886-A, 21182-A, 32465-A, 34168-A, 34416-A, 34641-A & 34752-A.			SD/-

R.No.	DATE	AUTHORITY	REVISION	ZONE	AHSP	D.O.
						SIG.

DRG. SEALED:- 14-8-44

DRN. SD/-	CHD. SD/-	TRD. SNS	COMP.	ASSY. DRG.
SD/- C.D'MAN	SD/- O I/C D.O.	SCALE:- 2/1		
APPD.	SD/- FOR CQA(A)	EST.MASS:-		
		GAUGE SCHD:- DATE:- 26-7-44		

MATL:- AS ABOVE

PROTECTIVE FINISH :- TO BE ANODISED TO DEF. 151 TYPE 1 OR 2
(SULPHURIC ACID PROCESS OR CHROMIC ACID PROCESS)

DESIGNER'S REF.

F. D. 2800

PART No.

Q.X. 208

D.S.CAT No.

1390-000326

AHSP:- C.I.(A) KIRKEE

HOLDER