

DRAWING CONVENTIONS CONFORM TO IS: 696.

SURFACE FINISH :- AS PER IS: 3073-67,  
WHERE NOT SPECIFIED SHOULD BE  $\nabla$

MATERIAL :-  
TEXTOLITE NTK-40 QUALITY I GOST 5-78

ARRANGEMENT OF LAYERS IS PARALLEL TO SURFACE 'B'  
SHARP EDGES SHOULD BE BLUNTED TO APPROX. 0.2mm  
INTERNAL CORNERS ARE APPROX. R 0.2mm.

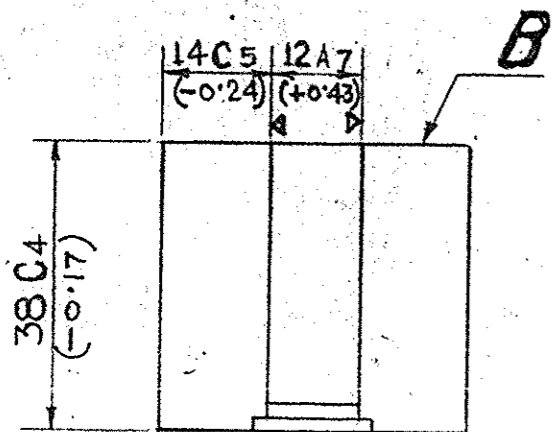
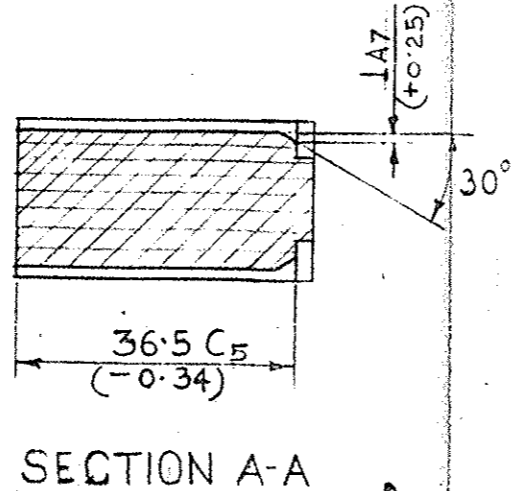
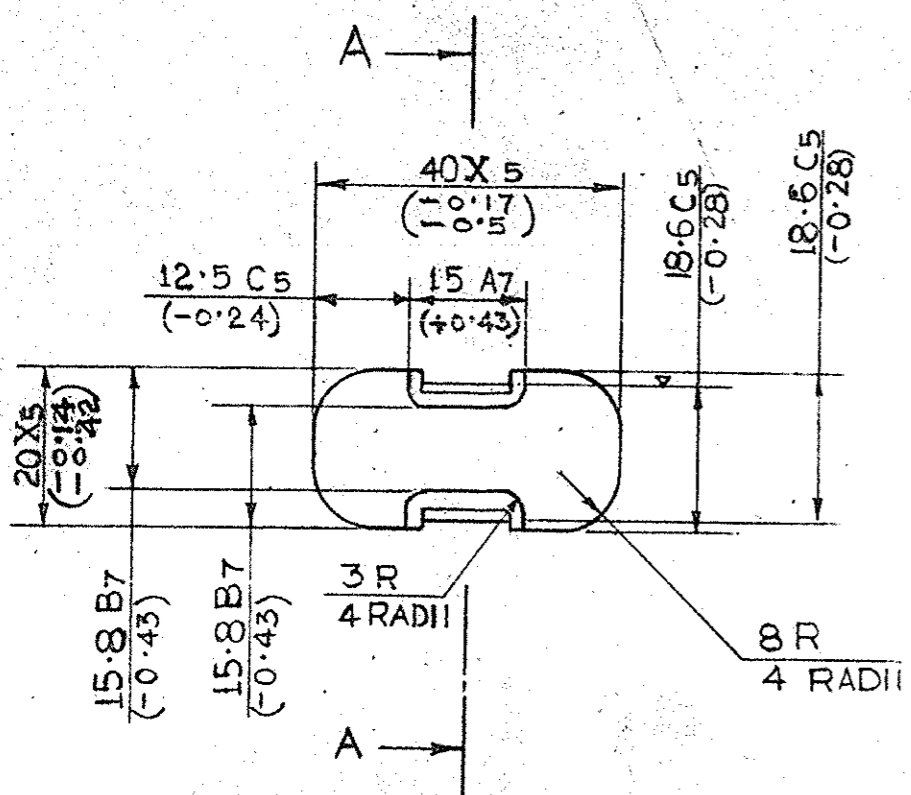
COATING :- BAKELITE VARNISH  $\Lambda B C-1$  GOST 901-78  
PRODUCED AS PER OST 3-4018-77.

THICKNESS OF VARNISH LAYER SHOULD NOT BE EXCEED 0.1mm  
MARK "K" (DIMENSIONAL ACCEPTANCE) ON A TAG

COATING FOR INDIA :-  
AS PER APC 209 TO SPECN. ISS: 8010-47.  
COATING LAYER NOT TO BE EXCEED 0.1mm

REMAINING TECHNICAL REQUIREMENTS ARE AS PER  
GOST SPECIFICATIONS.

MATERIAL FOR INDIA :-  
AS PER SPECN. BS: 2572 GROUP 1 TYPE 'F1'  
REMAINING TECHNICAL REQUIREMENTS FOR  
MATERIAL SAME AS OF COUNTRY OF ORIGIN.



26/9/05

A 4109

NO.	DATE	ZONE	BRIEF RECORD	SIG	DATE	NAME	ASSY. :- D.S. CAT. NO. 1005-007277	CQA(SA) ICHAPUR
21758-SA	27-5-92		COATING FOR INDIA AMENDED AND MATL. FOR INDIA ADDED		DGN.		MATERIAL :- AS STATED.	
21306-SA	18-7-91		DRAWING REVISED		DRN.		DIMENSIONS ARE IN MILLIMETRES	APPROVED DT. 7.1.86
20966-SA	14-10-90		COATING FOR INDIA ADDED		CHD.			NEG. PREPARED.
20888-SA	27-7-90		DRG. REVISED, RE-DRAWN AND PROV. RE-SEALED		TRD.			DESIGNER'S REF. 6011 4-9
			PREVIOUS DC(1) NOS. 18895-SA & 20101-SA		COMP.			DS. CAT. NO. 1005-007272

**BUFFER**

DT. 26.7.90 J/C.D.O  
SCALE: - 1:1  
SEALED: -  
PROV. DC (1) NO.  
18895-SA DT. 10.4.86