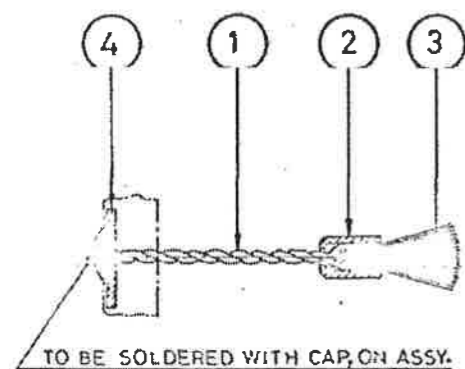


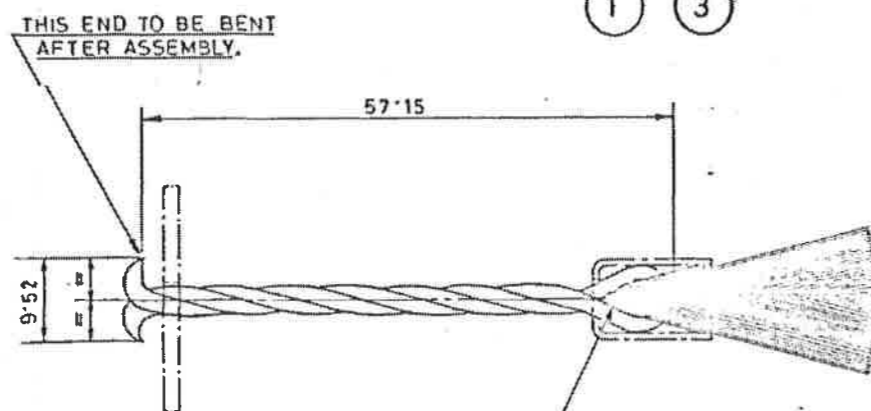
187000-0367, ON
D.S.CAT. 4930-000781

DIMNS. ARE IN mm.

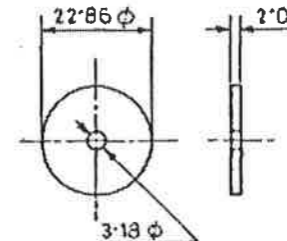
FOR EXPLANATION OF DIMENSIONING ETC.,
SEE ARDE NOTE SHEET NO.1



BRUSH, OIL, ASSY.

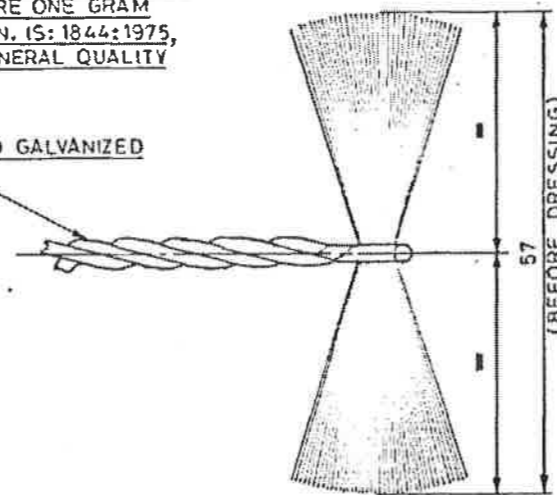


WIRE TO BE TWISTED TO HOLD A BUNCH OF
BRISTLE (3 BRUSHES REQUIRE ONE GRAM
BRISTLE APPROX), TO SPECN. IS: 1844:1975,
TYPE STIFF ANY GRADE GENERAL QUALITY

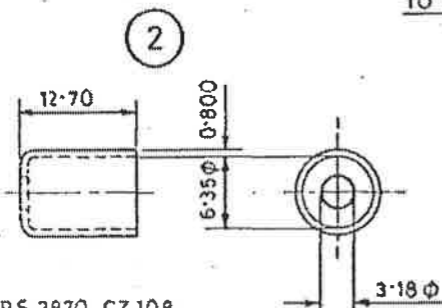


MATERIAL:-
LEATHER, COW, CURRIED
TO SPECN. IS: 560-1973

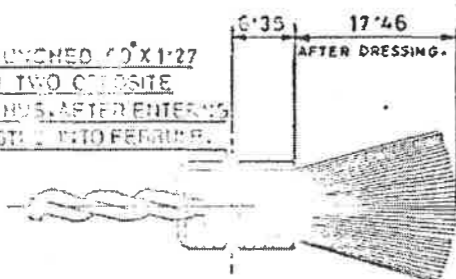
IRON WIRE ANNEALED AND GALVANIZED
TO SPECN. IS: 280, 1.40



PART VIEW SHOWS BRISTLE BEFORE
ENTERING INTO THE FERRULE
SCALE:- 2:1



TO BE PUNCHED 10 X 1.27
COMMON TWO CROSSITE
PUNTS THUS, AFTER ENTERING
THE BRISTLE INTO FERRULE.

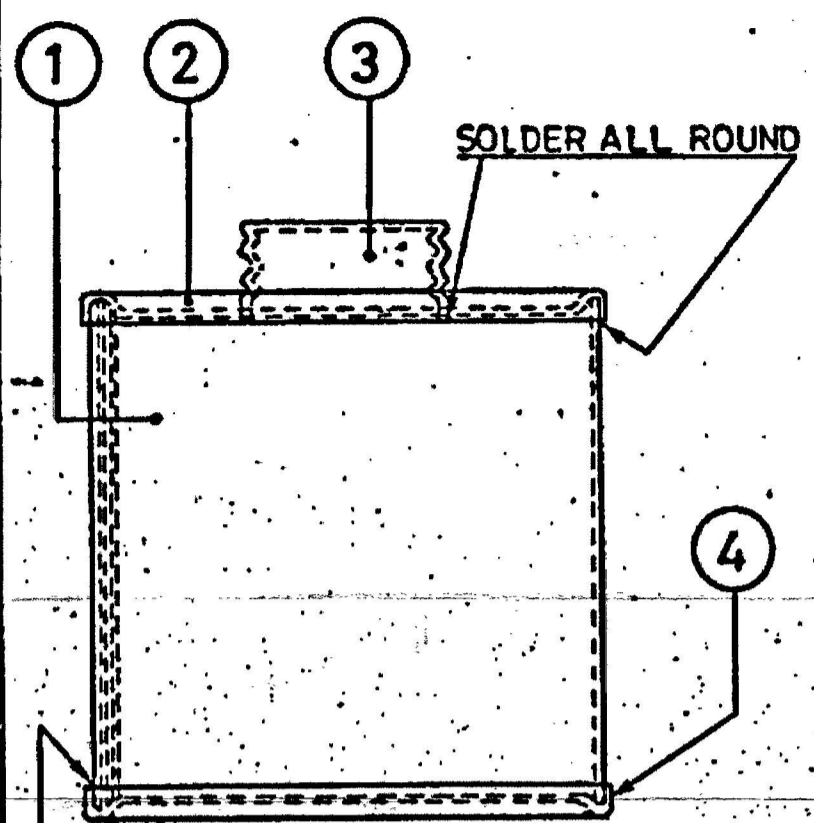


ENLARGED PART VIEW OF BRUSH, OIL
SCALE:- 2:1

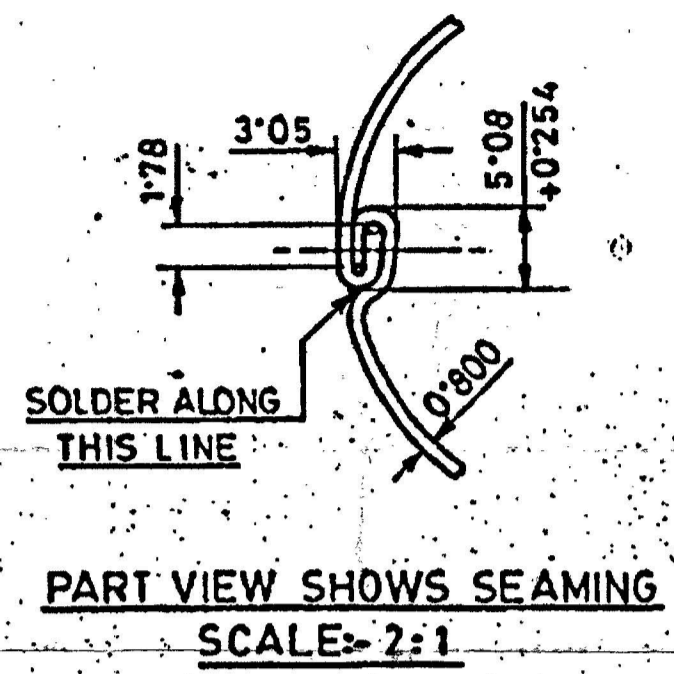
METRIC.

DRN.		CHD.	TRD.	COMP.	AHSP CQA(SA), ICHAPUR.
SCALE:- 1:1 & 2:1		EST. MASS.		ASSY. 4930-000506	
DT. 11-11-2003		APPROVED. DT.		NEG. RE-TRACED	
I/C, D.O.		MATERIAL:-		AS STATED	
DATE AUTHY.		BRIEF RECORD.		DGNR'S REF. CISA 284/3	
SEALD:- D.C. NO. 10909-SA, DT. 07. 7. 71		ZONE I/C, D.O. G.O.		PART NO.	
NOMENCLATURE:- BRUSH, OIL ASSY.		SIGN.		ORG. NO.	
		PROTECTIVE FINISH:-		D.S.CAT. NO. 4930-000781	

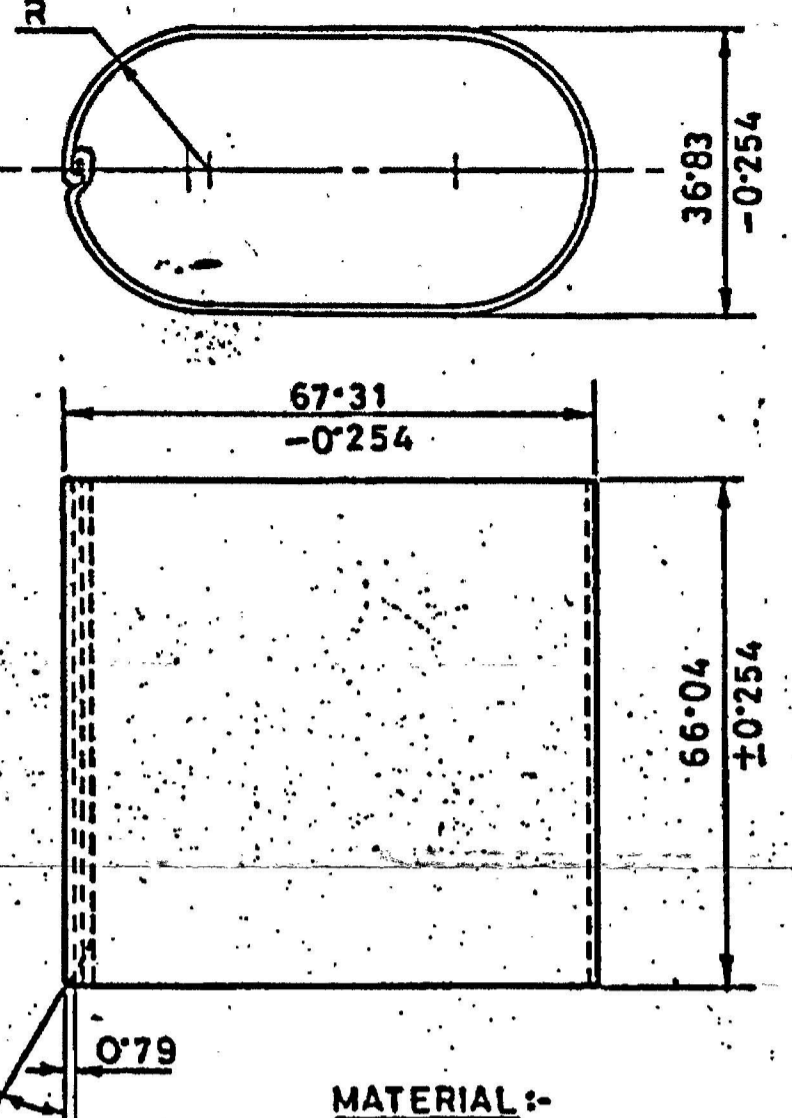
D.S.CAT. NO. 4930-002584



BODY ASSY.



BOTH ENDS TO BE BEVELLED 30° AFTER SEAMING.

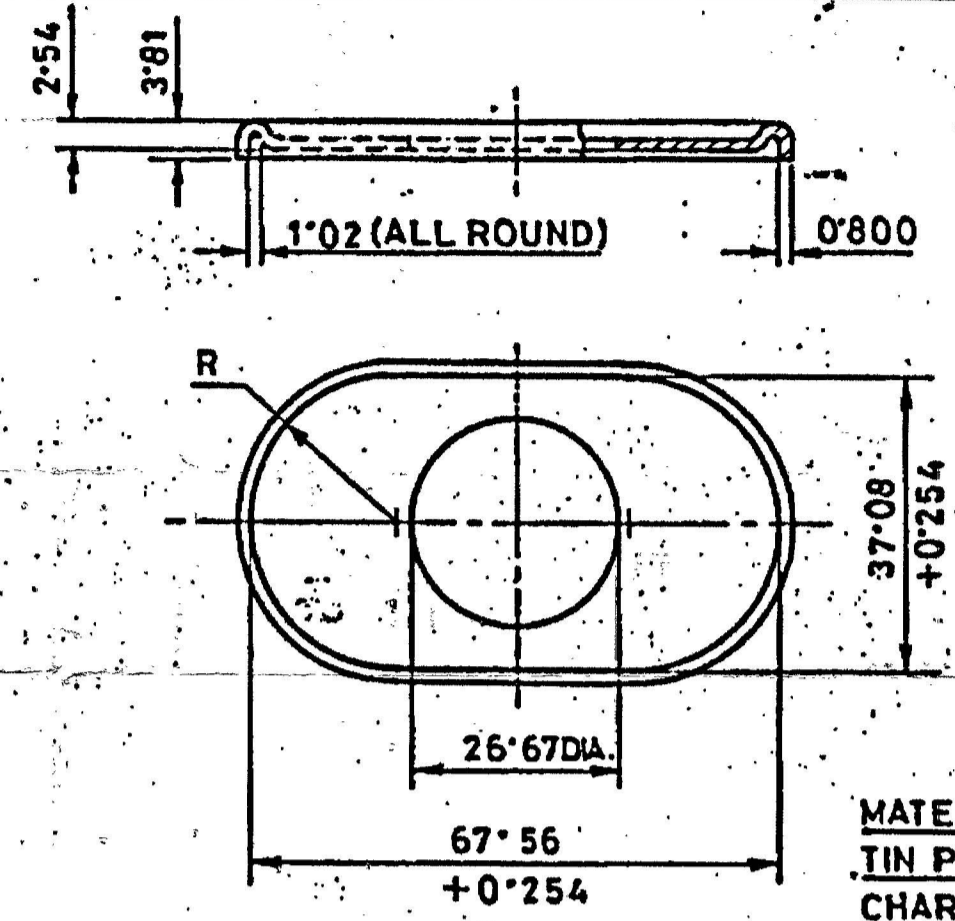


MATERIAL:-
TIN PLATE TO SPECN. IS: 597-1978 CHARCOAL GRADE.

ALT. MATERIAL:-
BS 1449 PT. 1: 1972 SEC. 2 Gr. CS-3 TIN COATED WITH THICKNESS 55 GMS PER SQUARE METRE.

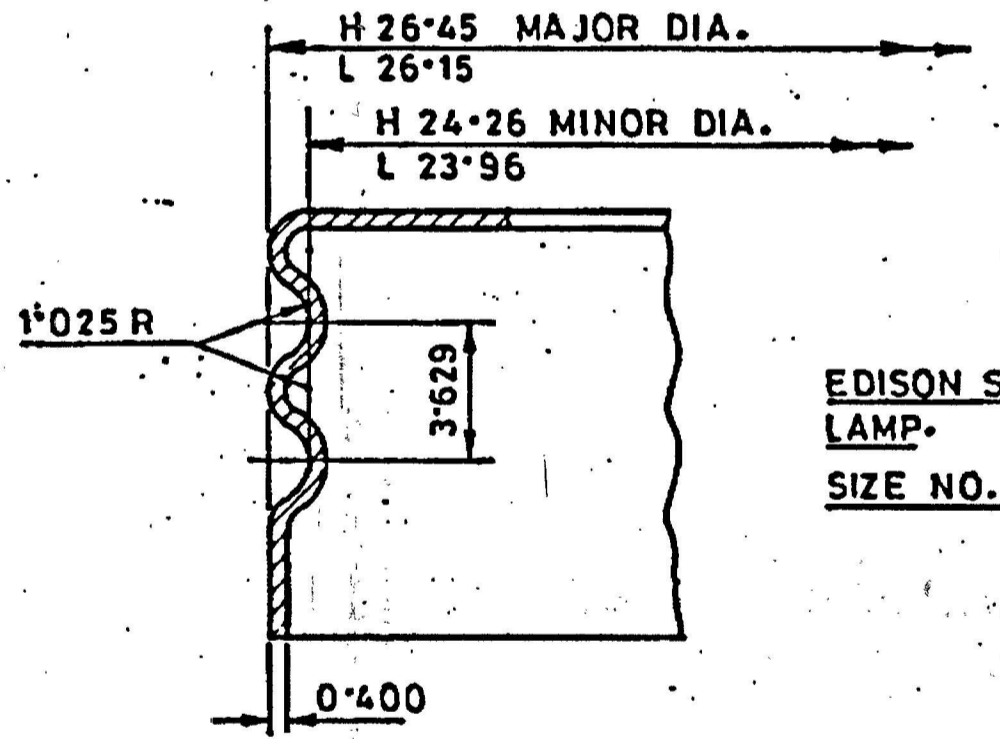
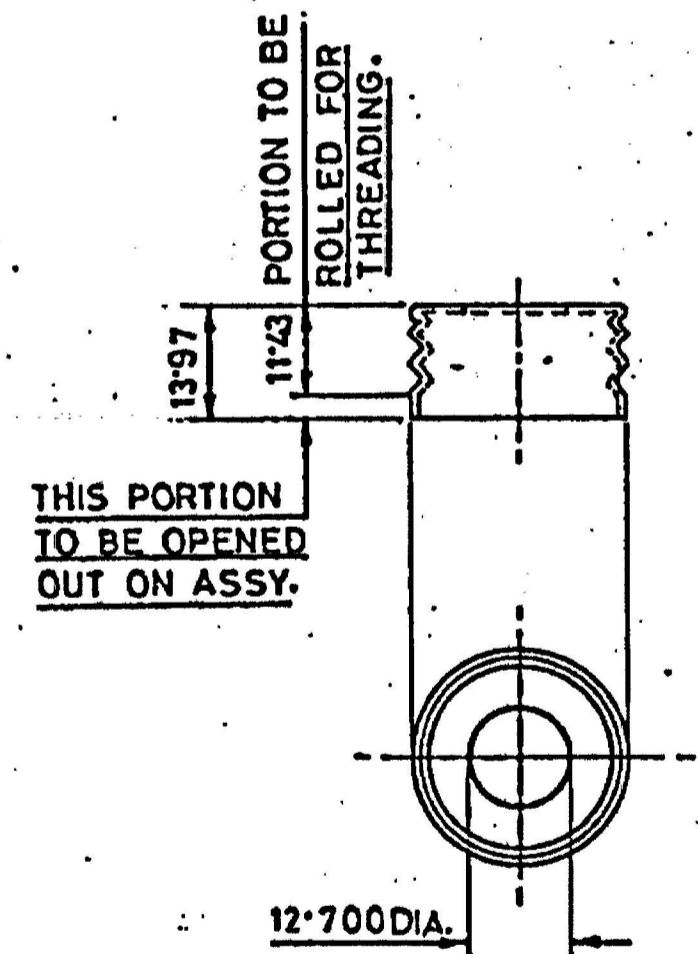
DIMNS. ARE IN mm

FOR EXPLANATION OF DIMENSIONING ETC. SEE ARDE NOTE SHEET NO. 1



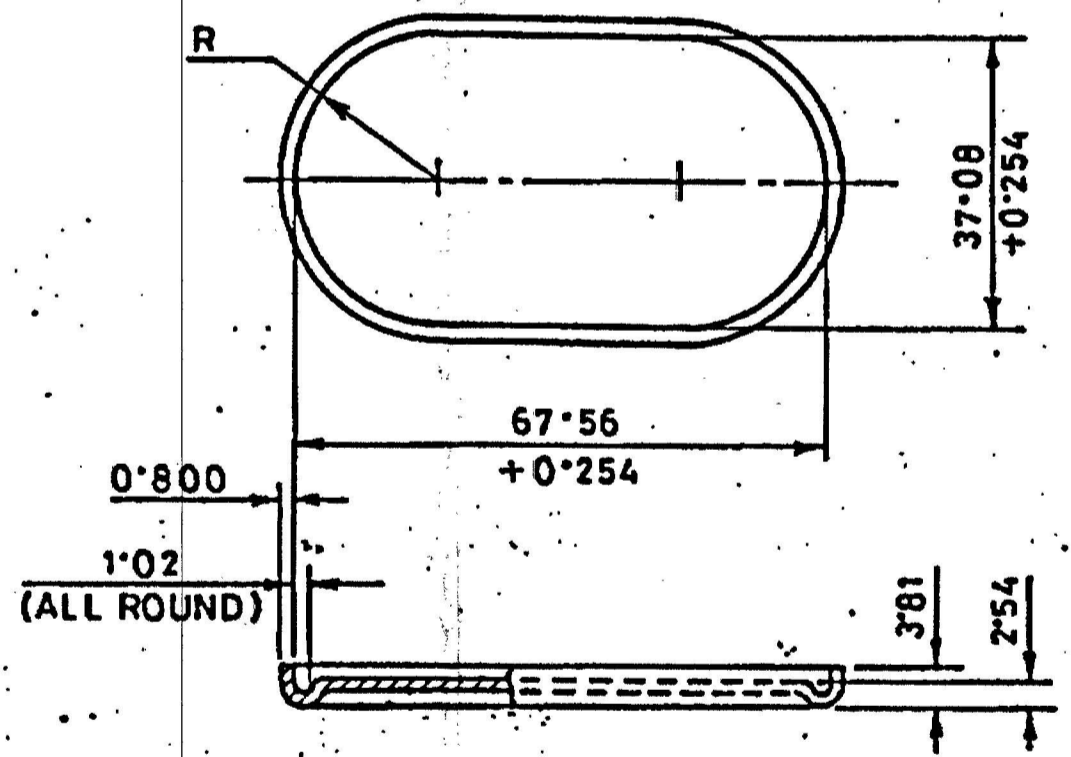
MATERIAL:-
TIN PLATE TO SPECN. IS: 597-1978 CHARCOAL GRADE.

ALT. MATERIAL:-
BS 1449 PT. 1: 1972 SEC. 2 Gr. CS-3 TIN COATED WITH THICKNESS 55 GMS PER SQUARE METRE.



ENLARGED PART VIEW OF THREAD FORM SCALE: 5:1

EDISON SCREW THREADS FOR LAMP.
SIZE NO. E 27 (MEDIUM)



MATERIAL:-
TIN PLATE TO SPECN. IS: 597-1978 CHARCOAL GRADE.

ALT. MATERIAL:-
BS 1449 PT. 1: 1972 SEC. 2 Gr. CS-3 TIN COATED WITH THICKNESS 55 GMS PER SQUARE METRE.

CERTIFIED COPY OF THE STORE DRG./GAUGE DRG./Sch/ SPECN/NOTE SHT.
DATE: 25.07.16 ICDD

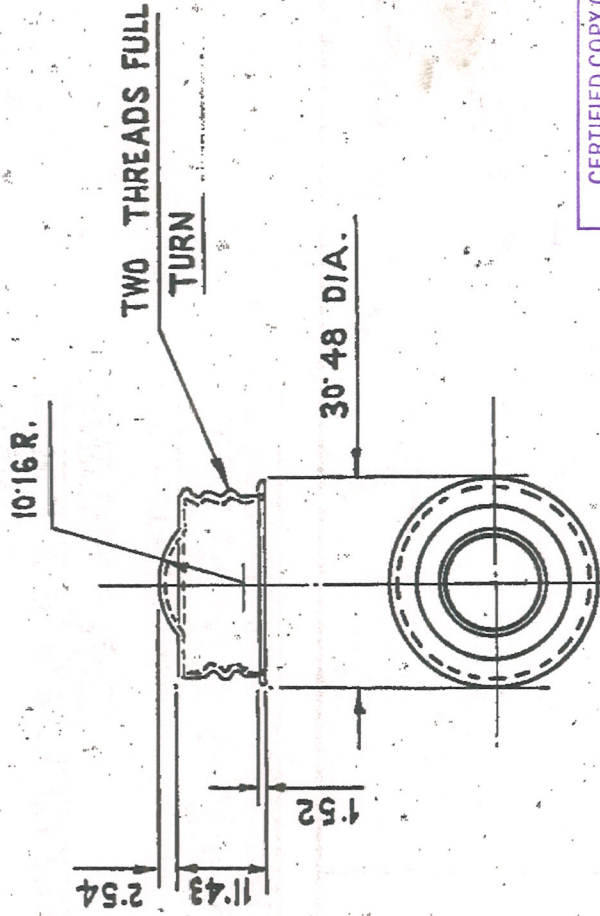
MATERIAL:-
TIN PLATE TO SPECN. IS: 597-1978 CHARCOAL GRADE

ALT. MATERIAL:-
BS 1449 PT. 1: 1972 SEC. 2 Gr. CS-3 TIN COATED WITH THICKNESS 55 GMS PER SQUARE METRE.

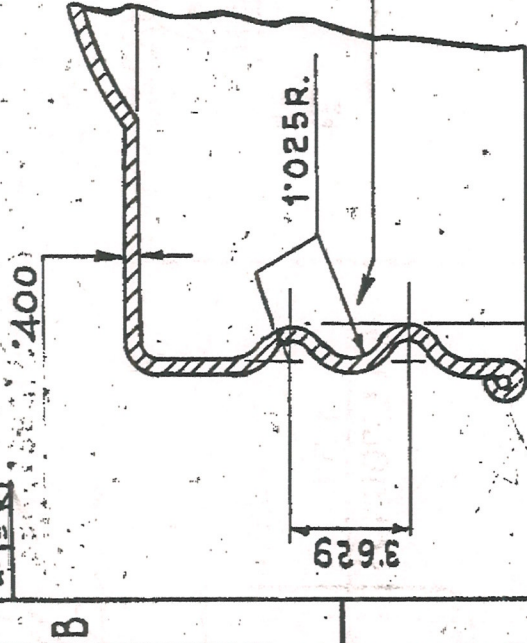
METRIC.

21-7-16	26899-SA	DS CAT. NO. ADDED			DRN.	CHD.	TRD.	COMP.	AHSP CQA(SA), ICHAPUR
10.1.2000	24608-SA	ALTERNATIVE MATERIAL AMENDED			SCALE:- 1:1, 2:1 & 5:1		EST. MASS		ASSY. 4930-000506
08-04-99	24320-SA	PROFORMA CHANGED, NEGATIVE RE-TRACED AND DRG. RE-SEALED.			DT. 08-4-99		(NEG. RE-TRACED.)		
		PREVIOUS D.C. NOS. 10909-SA, 16274-SA, 18311-SA, 20077-SA & 21476-SA							
DATE	AUTHY.	BRIEF RECORD.	ZONE	I/C; D.O.	G.O.	H.T./HARDNESS			PART NO.
SEALED:-	D.C. 10909-SA, DT. 7.7.71			SIGN.		PROTECTIVE FINISH			DRG. NO.
NOMENCLATURE:-		BODY							D.S.CAT. NO. 4930-002584

26899 -SA	21-7-16		DSCAT NO. ADDED	<i>Man</i>
AUTHY	DATE	ZONE	BRIEF RECORD	SIG



CERTIFIED COPY OF THE
STORE DRG/GAUGE DRG/Sch/
SPECN/NOTE SHJ.
Search
DATE: 25.07.16. ICDO



EDISON SCREW THDS FOR LAMPS
SIZE NO. E27 (MEDIUM)

ENLARGED PART VIEW OF CAP.
SCALE: 5/1

ALT. MATL. :-
BS 1449 PT.1: 1991. SECIII
GR. CS - 3 ~~MM~~ TIN COATED
WITH THICKNESS 55. gms.
PER SQUARE METRE.

MATL: TIN PLATE TO SPECN.
IS: 597-1978 CHARCOAL, GRD. METRIC

24608 -SA	10-1-2000		ALTERNATIVE MATERIAL AMENDED.	<i>Man</i>
21476 -SA	2.1291		D S CAT NO. ADDED	<i>Man</i>
20077 -SA	1.8.88		ALT. MATL. AMENDED	<i>Man</i>
18311-5A	53.85		ALT. MATL. ADDED	<i>Man</i>
16274 -SA	18.3.80		MATL. AMENDED	<i>Man</i>
10909 -SA	7.7.71		DRG SEALED	<i>Man</i>
AUTHY	DATE	ZONE	BRIEF RECORD	SIG

FOR EXPLANATION OF DIMENSIONING ETC. SEE ARDE NOTE SHT. NO. 1		DGN	DATE	NAME
		DRN		
		CHD		
		TRD		
		COMP		
		P. Seal R. 1.1.16		
		<i>Man</i> 1/c.00		
		SCALE: 1/1 & 5/1		
		SEALED D.C.(1) 10909-SA-D-7-7-71		

ASSY. DRG. D S CAT NO. 4930-000506	CISA	ICHAPUR
MATERIAL: AS STATED		
DIMENSIONS ARE IN MILLIMETRE		
APPROVED <i>Man</i> BSS FOR CISA		
DESIGNER'S REF CISA 284/2		
DS. CAT. NO 4930-002585		

CAP SCREWED