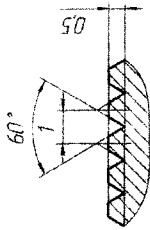


SAF CONFIDENTIAL  
COPY

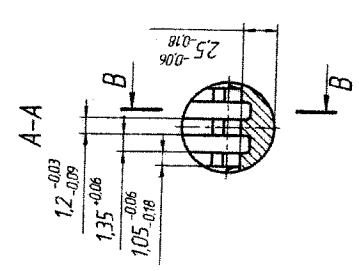
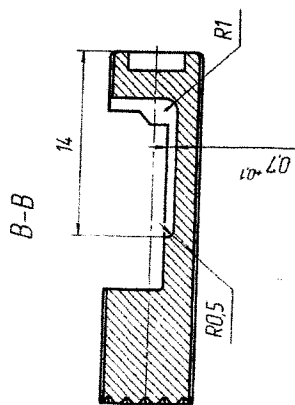
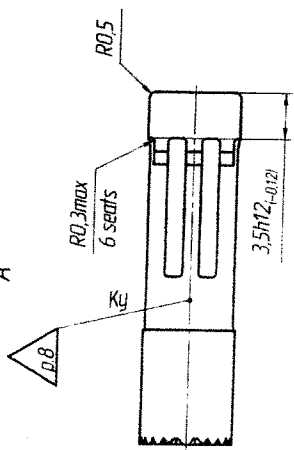
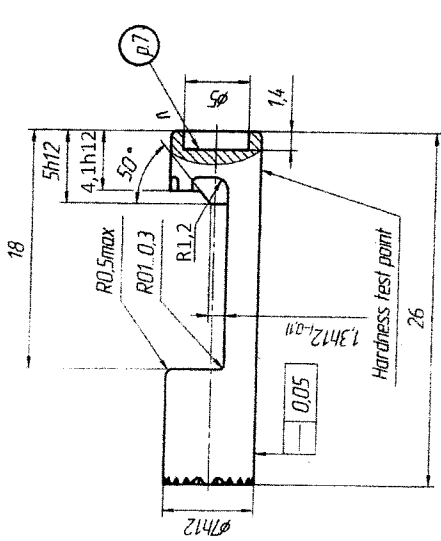
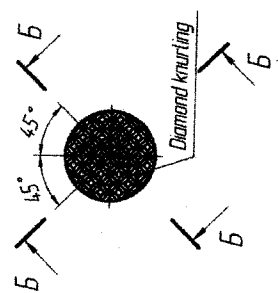
Ro 2.5

REG. NO. SK-6651/TE

5-5 (10:1)  $\phi$   
Knurling profile



Handwritten: HCS / mm  
Certified as correct copy  
of drawing no. 03/11/23



- 1 69 ... 73 HRA. At hardness test point local smoothing of surface is allowed at depth up to 0,1 mm
- 2 Unspecified rounding radii and inner radii are 0.3 mm except knurling
- 3 Unspecified tolerances according to 61745-1C0TY/E2
- 4 Straightening of part is not allowed
- 5 Position, size and quantity of technological defects, trace from mold split, traces from ejectors should not exceed those specified by control sample
- 6 Coating is Chem. Phos chr with oiling
- 7 Mark mold number and mold cavity number Font 2-1p3
- 8 Stamp according to 61745-1C0TY/E2

7.62X39mm AR-SAF

Latch

SMALL ARMS FACTORY  
KANPUR

SCALE  
NTS

MIM-4140  
61745-1C0TY/E2

UNLAWN	SEEN BY	CHECKED	Weight: 36g
DATE	APPROVED	03/11/2023	
DIRS. NO.	SK-6651/TE		SHT. 1 OF 1