

RESTRICTED COPY

Project : FG

**ACCEPTANCE TEST PROCEDURE (ATP) OF
COVER CANVAS MULTI-APPLICATION**

DRG. NO. 1015-000955

Item Code : 9080081524

Prepared and published by

Gun Carriage Factory

A Unit of Advanced Weapons and Equipments India
Ltd.

Government of India, Ministry of Defence,

Jabalpur (MP) 482011



RESTRICTED

QAP/ATP

This quality plan is a general guide to meet the quality requirements of product. It consists of applicable procedures (describing production processes, inspection & testing instructions), applicable workmanship standards, the measurement tolerances acceptable, the description of material standards and so forth. It also mentions the list of documents, test certificates that will be submitted by firm to GCF along with finished component.

**1. Nomenclature & Drawing No. : COVER CANVAS MULTI-APPLICATION
DRG.NO. 1015-000955**

2. Method of manufacture & Inspection schedule :

S. NO.	Sequence of operation/ process/functional check/Inspection	REMARK (SAMPLE PLAN OR ANY OTHER APPLICABLE INSRUCTIONS)
1	FIT ASSEMBLE ALL DETAIL AS PER DRG.	ASSY SHOULD CONFIRM ACCEPTANCE TEST
2	ACCEPTANCE TEST	

3.0 Inspection: Following methodology is to be followed for inspection.

3.1 Mode of Inspection & Sample Size/Selection:

(a) **At Firm Premises:** Inspection by the manufacturer for 100% quantities of lot size.

(b) **At receipt End:** Inspection by MID/QC (GCF Rep.) at receipt at GCF. Sample selection as per existing IS standard 2500 part-II, 1965.

(c) Acceptance as per Chemical composition and Mechanical properties /performance Test/ Fitment Trial/ Practical Trial/ Any other functional requirement.

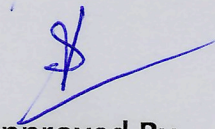
4. Submission of Documents:

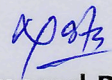
Following documents should be submitted along with finished product:

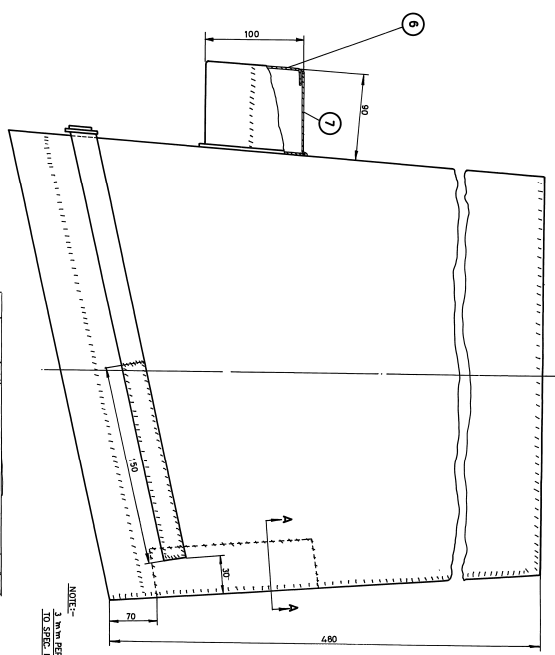
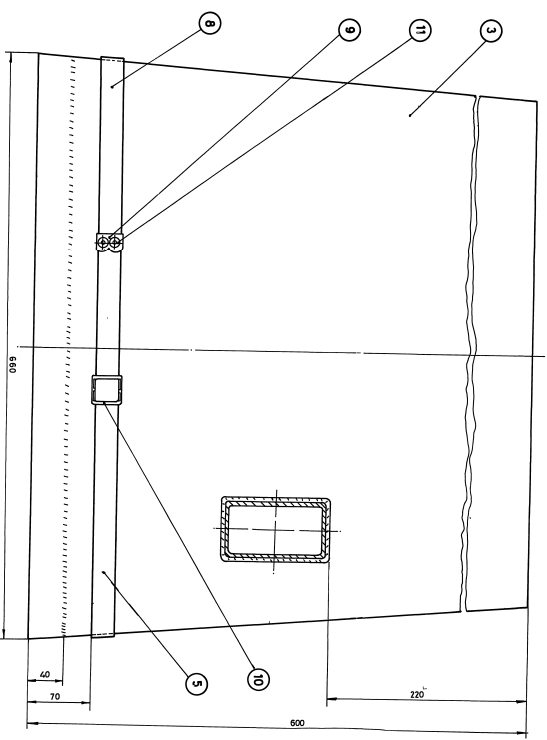
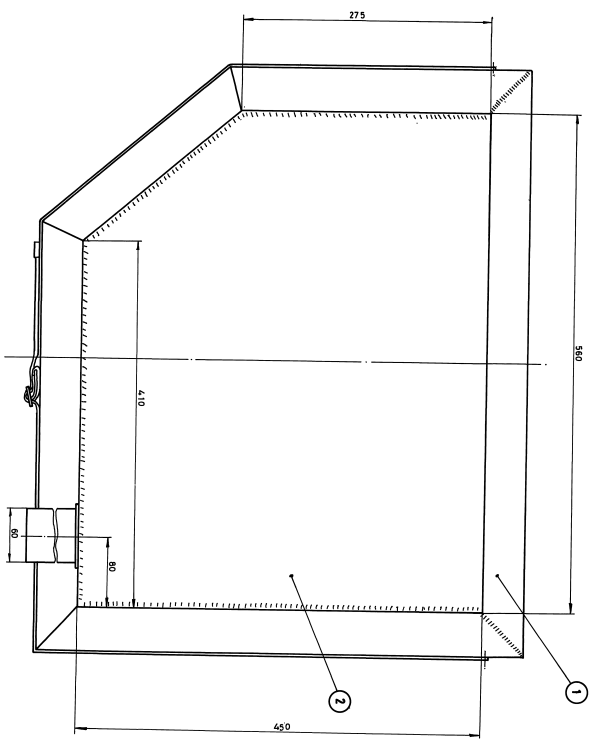
(3) Acceptance test report after functional trial.

(4) NABL/Govt. approved Lab certificate required for material.

Date:-16/12/2022


**Approved By
Controlling Officer
(QC Section)**


**Prepared By
JWM/SC**



NOTE:-
 1. MM PER STRICH WITH THREAD SKIVING COTTON VARIETY NO.37.
 2. TO SPEC. NO.151270.

CONTRACTOR'S MATERIALS
 LETTERS AND FIGURES IN HINDI

TO BE SPECIFIED ON QUOTE IN BLOCK LINK
 COVER SHEETS, S.A.
 1015-000935

MARK & MARK OF SUPPLY

NO.	DESCRIPTION	MATERIAL	QTY	UNIT
1	SIDE PIECE PT. 1	GOTI GA. DUCK	AS SHOWN	1
2	TOP PIECE	GALETTA No. 21	"	1
3	SIDE PIECE PT. 2	151.1422 - 1783	"	1
4	WEB STRAP	FOLI-GAVID BY	AS SHOWN	1
5	ROCKET FAST TOP	151.1422 - 1783	AS SHOWN	1
6	ROCKET FAST SRE	151.1422 - 1783	AS SHOWN	1
7	WEB STRAP	25 WEB-TROOLING	1	1
8	TIP	25 WEB-TROOLING	1	1
9	Buckle	25 WEB-TROOLING	1	1
10	Eye Let	25 WEB-TROOLING	1	1
11	LEATHER PIECE	2001.11942	2	2

REVISION	DATE	BY	REASON
1	31/12/55		AMENDMENTS

DESIGNED BY	SCALE	DATE
DR. B. N. SINGH	1:1	12/12/55
CHECKED BY	SCALE	DATE
DR. B. N. SINGH	1:1	12/12/55

DESIGN NO.	PROJECT NO.
1015-000935	1015-000935

DESIGNER	SCALE	DATE
DR. B. N. SINGH	1:1	12/12/55

COVER CANVAS MULTI-APPLICATION

COM/WALBAL/PUR

ICM 1642

1015-000935