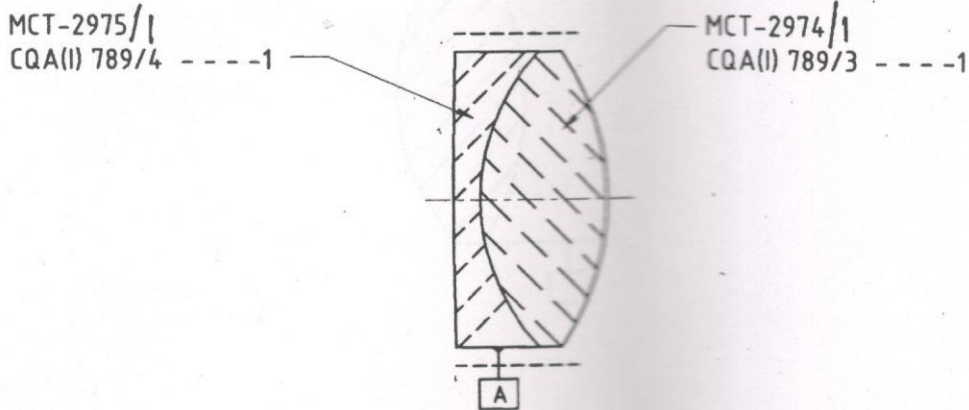


# BINOCULAR 8x30 R LENS OPTICAL INSTRUMENT

DRG. NO.  
CQA(I) 789/SA-2



----- BLACK LAQUERED

ORDNANCE FACTORY, DEHRADUN.

<p>R 414.336 ( ) FREE <math>\phi</math>16.3</p> <p>COATING: MCS001-1</p> <p>CHAMFER 0.1...0.3</p> <p>MCT-2975/1 CQA(I) 789/4</p>	<p>-0.04 <math>\phi</math>22 -0.07 Md 11.55 <math>\pm</math>0.1 4/0 .05</p> <p>OPTICAL CEMENT</p> <p>----- BLACK LAQUERED</p>	<p>R 19.247 ( ) FREE <math>\phi</math>21</p> <p>COATING: MCS001-1</p> <p>CHAMFER 0.1...0.3</p> <p>MCT-2974/1 CQA(I) 789/3</p>
--	---	---

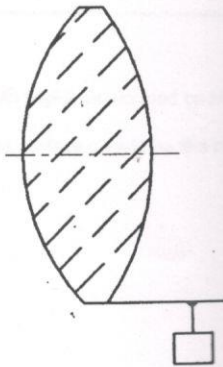
FOR TRADE ONLY

Date of Issue: 08/01/15

	DT. 31-10-11	SCALE- 2:1	
DR. - P. SINGH	MATERIAL	TREAT.	
TR. -	AS ABOVE	AS ABOVE	
CH.	SHEETS-1	SHTNO.-1	
DA-01/15 dt -02/01/15 AMENDMENTS.	APPROVED:		DRAWING NO-
OFD/DO/002	JWM/DD	WM/PRP	MCT-2973/1

# BINOCULAR 8x30 R LENS OPTICAL INSTRUMENT

DRG. NO.  
CQA(I) 789/3



ORDNANCE FACTORY, DEHRADUN.

LEFT SURFACE	MATERIAL	RIGHT SURFACE
R 16.045 ( ) FREE $\phi$ 19  3/5 (1) (CENTERING ACCURACY) 5/1 x 0.1 (SURFACE ACCURACY)  CEMENTING FACE  CHAMFER 0.1...0.3	GLASS TYPE HOYA TQC 6 -0.04 $\phi$ 22 -0.07  Md 9.55 $\pm$ 0.1  1/3 x 0.063  2/0 4/0.05 6/10	R 19.247 ) FREE $\phi$ 21  3/5 (1) 5/1 x 0.1  COATING: MCS001-1  CHAMFER 0.1...0.3

FOR TRADE ONLY  
Date of Issue: 08.02.15  
2

	DR. - P.C.SINGH	DT. 31-10-11	SCALE - 2:1
	TR. -	MATL. AS ABOVE	TREAT. AS ABOVE
	CH.	SHEETS - 2	SHTNO. - 1
D.A. No. 01/15 Dt. 02/01/2015	APPROVED	DRAWING NO - MCT-2974/1	
AMENDMENTS.			
OFD/DO/002	JWM/DO      WM/P&P		



ORDNANCE FACTORY, DEHRADUN.

# BINOCULAR 8x30 R

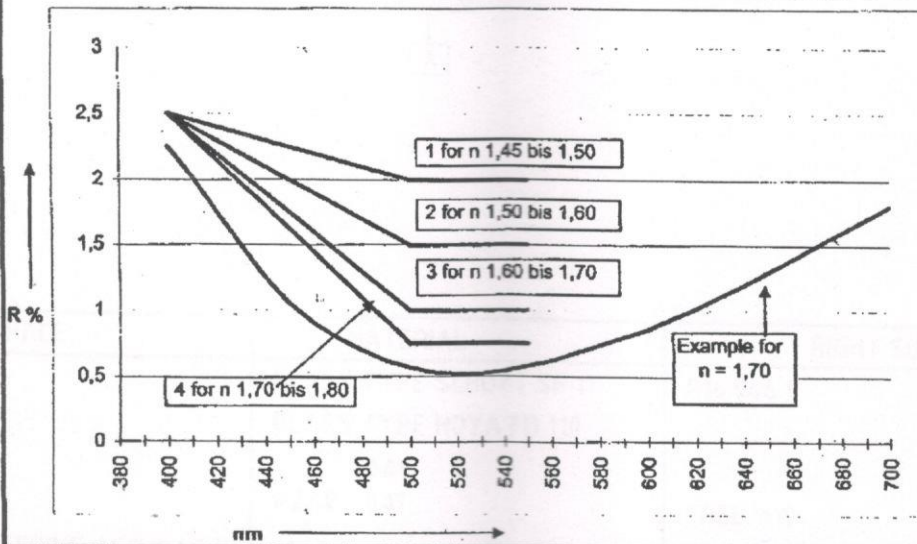
## LENS OPTICAL INSTRUMENT

DRG. NO.  
CQA(I) 789/3

STEINER OPTIK GERMANY	Thin Film Technology Antireflexion Coating (AR)	Data sheet for MCS001-1
--------------------------	--	----------------------------

**Description:**

Standard - AR coating with MgF2 evaporated on heated substrate.  
The reflected colour of the surface should be like magenta blue.



**Description of tolerance:**

Peak at  $\lambda = 530 \text{ nm} \pm 5\%$

**Order of tests:**

1. Surface has to be cleaned with acetone.
2. The adhesive tape has to be fixed tightly and yanked off jerkily.
3. An eraser has to be moved to and fro ten times.

FOR TRADE COPY  
Date of issue 08.02.15

		DT. 31-10-11	SCALE-
		DR. - P.C.SINGH	MATH.
		TR. -	AS ABOVE
		CH.	SHTNo.-2
DA-01/15, dt 02/01/15		APPROVED	
AMENDMENTS.		DRAWING NO-	
OFD/DO/002		MCT-2974/1	

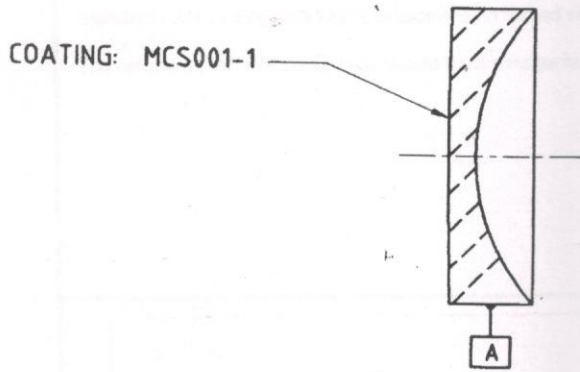
APPROVED

JWM/DO      Wm/PRP

# BINOCULAR 8x30 R

## LENS OPTICAL INSTRUMENT

DRG. NO.  
CQA(II) 789/4



ORDNANCE FACTORY, DEHRADUN.

LEFT SURFACE	MATERIAL	RIGHT SURFACE
R 414.336 (	GLASS TYPE SCHOTT SF 11 GLASS TYPE HOYA FD 110	R16.046 (
FREE $\phi$ 16.3 3/5 (1) (CENTERING ACCURACY) 5/1 x 0.1 (SURFACE ACCURACY) COATING: MCS001-1	-0.04 $\phi$ 22.0 -0.07 Md 2.0 $\pm$ 0.1 1/3 x 0.063	FREE $\phi$ 19 3/5 (1) 5/1 x 0.1 CEMENTING FACE
CHAMFER 0.1...0.3	2/0 4/0.05 6/10	CHAMFER 0.1...0.3

JOB TRADE COPY  
Date of Issue  
08.02.15

		DT. 31-10-11	SCALE- 2:1
		DR.- P.C.SINGH	MATL. TREAT.
		TR.-	AS ABOVE AS ABOVE
		CH.	SHEETS-2 SHTNO.-1
DA-01/15 dt-02/01/15	APPROVED.  JWM/DO	DRAWING NO- MCT-2975/1	
AMENDMENTS.			
OFD/DO/002			



# BINOCULAR 8x30 R

## LENS OPTICAL INSTRUMENT

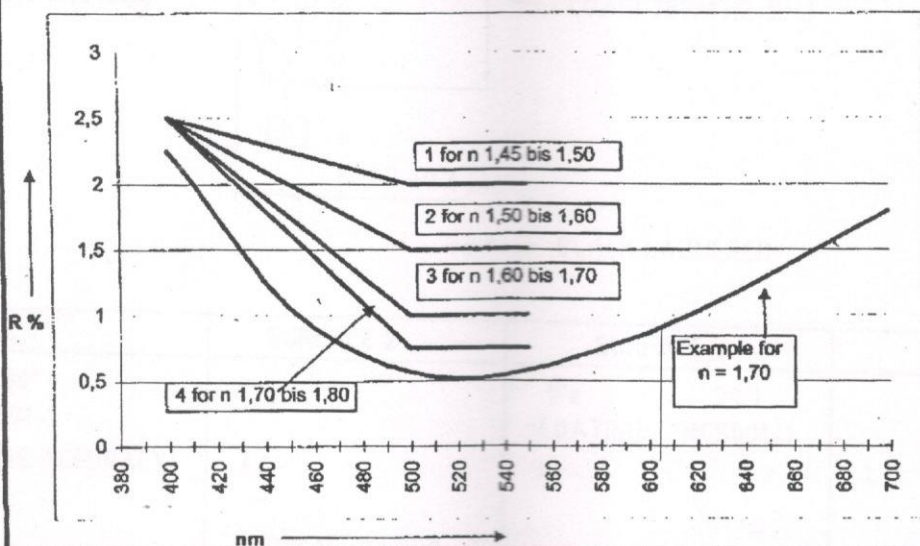
DRG. NO.  
CQA(I) 789/4

STEINER OPTIK GERMANY	Thin Film Technology Antireflexion Coating (AR)	Data sheet for MCS001-1
--------------------------	--	----------------------------

**Description:**

Standard - AR coating with MgF2 evaporated on heated substrate.

The reflected colour of the surface should be like magenta blue.



**Description of tolerance:**

Peak at  $\lambda = 530 \text{ nm} \pm 5\%$

**Order of tests:**

1. Surface has to be cleaned with acetone.
2. The adhesive tape has to be fixed tightly and yanked off jerkily.
3. An eraser has to be moved to and fro ten times.

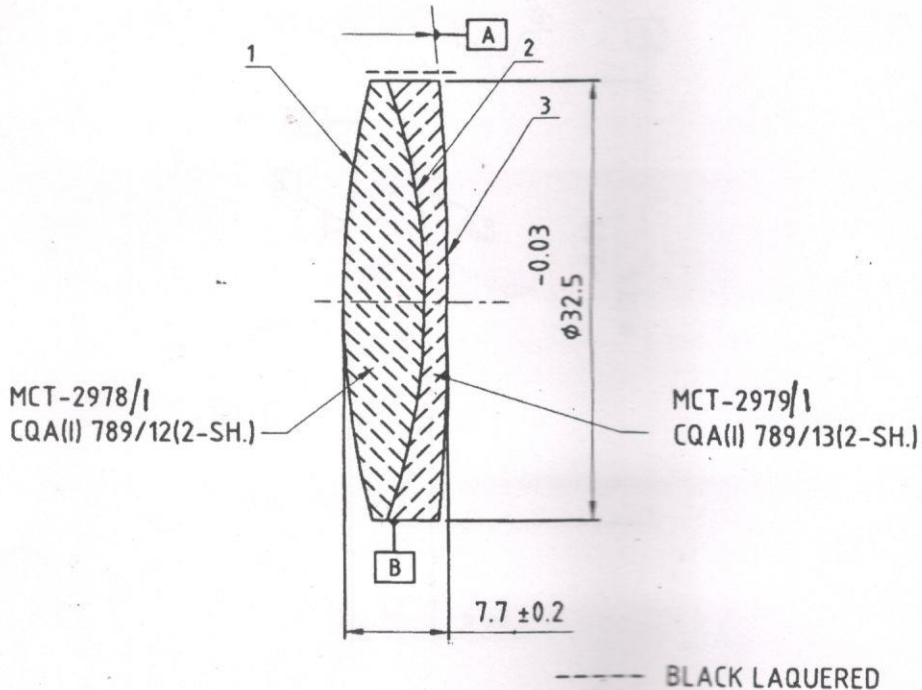
FOR TRADE ONLY

Date of Issue: 08/07/15  
2

		DT. 31-10-11	SCALE- 2:1
	DR. - P.C.SINGH	MATT.	TREAT.
	TR.-	AS ABOVE	AS ABOVE
	CH.	SHEETS-2	SHTNO.-2
DA-01/15 dt-02/01/15	APPROVED.	DRAWING NO- MCT-2975/1	
AMENDMENTS:	<i>[Signature]</i>		
OFD/DO/002	JWM/DO. <i>[Signature]</i>		

# BINOCULAR 8x30 R LENS OPTICAL INSTRUMENT

DRG. NO.  
CQA(I) 789/SA-6



ORDNANCE FACTORY, DEHRADUN.

SURFACE 1	SURFACE 2	SURFACE 3	SURFACE 4
$\phi_e$ 30° COATING: AC001-1 4/2' (CENTERING ACCURACY)	4/-  OPTICAL CEMENT	$\phi_e$ 29.7 COATING: MCS001-1 4/-	4/-
CEMENTING LENS MCT-2978/1		CEMENTING LENS MCT-2979/1	

FOR TRADE OFF  
Date of Issue  
CB/DT/S

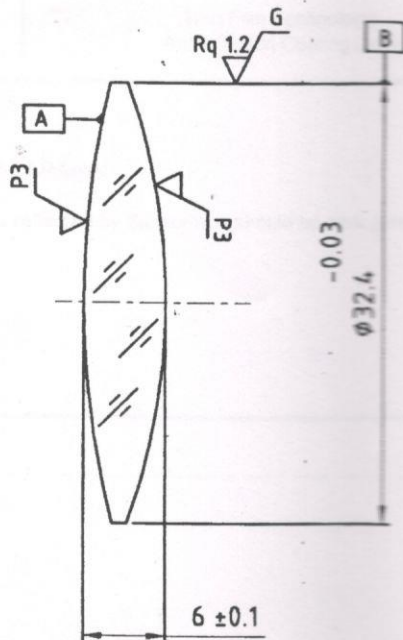
	DR.- P.C.SINGH	DT. 31-10-11	SCALE- 2:1
	TR.-	MATL. AS ABOVE	TREAT. AS ABOVE
	CH.	SHEETS-1	SHTNO.-1
DANo - 01/15 dt - 02/01/15 AMENDMENTS. OFD/DO/002	APPROVED.  JWM/DO.	DRAWING NO- MCT-2977/1	



# BINOCULAR 8x30 R

## LENS OPTICAL INSTRUMENT

DRG. NO.  
CQA(I) 789/12 SH-1



ORDNANCE FACTORY, DEHRADUN.

LEFT SURFACE	MATERIAL	RIGHT SURFACE
R 67.682 CX $\phi_e$ 30 CHAMFER 0.1-0.3 COATING: AC 001-1 3/5 (1) 4/ - 5/3 x 0.16	SCHOTT: N-BK7/517642  $n_e$ 1.51872 ± 0.001 $n_o$ 63.96 ± 0.8% 0/10 1/1 x 0.10 2 x 2;2	R 48.028 CX $\phi_e$ 30 CHAMFER 0.1-0.3  3/5 (1) 4/2' 5/3 x 0.16 CEMENTING FACE

FOR TRADE COPY  
Date of Issue: 02/01/15

	DR. - P.C.SINGH	DT. 31-10-11	SCALE - 2:1
	TR. -	MATL. AS ABOVE	TREAT. AS ABOVE
	CH.	SHEETS - 2	SHTNO. - 1
DA-01/15 dt - 02/01/15	APPROVED.  JWM/DO      WJM/PRP	DRAWING NO -	
AMENDMENTS.		MCT-2978/1	
OFD/DO/002			