

NOTE:
TURN OVER SHOULD BE DONE AT ONE TON ± 50 kg DEAD LOAD USING SUITABLE TURN OVER TOOLS.

3	DISTANCE PIECE	HEMRL/PYRO/H/SK.021	6	1
2	CAP SHELL	HEMRL/PYRO/H/SK.021	7	1
1	SQUIB PLUG (BRIDGED)	HEMRL/PYRO/H/SK.021	2	1
S.No.	NOMENCLATURE	DRG No.	DET No.	QTY.

LIST OF COMPONENTS

R. No.	DATE	AUTHORITY	ZONE	BRIEF RECORD	CD.	GO.
					SIGN.	

DEVIATION FOR UNTOLERANCED DIMENSIONS TO CONFORM TO SPEC. IS: 2102 MEDIUM
DRAWING CONVENTIONS CONFORM TO IS SPEC.

SCALE: 5:1		DRAWING: 1
EST. MASS:		DRN. L.S. NAG DATE: 24-02-2011
GAUGE SCHD:		CHD. <i>[Signature]</i> PASSED <i>[Signature]</i>

ALL DIMENSIONS ARE IN mm UNLESS OTHERWISE STATED

MATL: _____
APPROVED *[Signature]* FOR DIRECTOR

PROTECTIVE FINISH: _____ ASSY. DRG. HEMRL/PYRO/H/SK.021

TITLE: CAP ELECTRIC BRIDGE WIRE
SUB ASSY (EMPTY) (AFTER TURN OVER)
DRG. No. HEMRL/PYRO/H/SK.021

DESIGN AUTHORITY:
HIGH ENERGY MATERIALS RESEARCH LABORATORY, PUNE - 411021
DET. No. 1 | 2 SHTS. | SHT. No. 1
PART No.
D.S. CAT. No.
A.H.S.P.

HIGH ENERGY MATERIALS RESEARCH
LABORATORY, PUNE - 411021

DESIGN AUTHORITY:

TITLE: CAP ELECTRIC BRIDGE WIRE
SUB ASSY (EMPTY) (BEFORE TURN OVER)

DRG. No. HEMRL/PYRO/H/SK.021

DET. No. 1 | 2 SHTS. | SHT. No. 2

PART No.

D.S. CAT. No.

A.H.S.P.

PROTECTIVE FINISH: _____

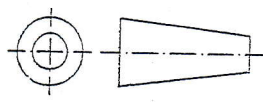
MATL: _____

ALL DIMENSIONS ARE IN mm UNLESS OTHERWISE STATED

GAUGE SCHD: _____

EST. MASS: _____

SCALE: 5:1



DEVIATION FOR UNTOLERANCED DIMENSIONS
TO CONFORM TO SPEC. IS: 2102 MEDIUM

DRAWING CONVENTIONS CONFORM
TO IS SPEC.

DRAWING: _____

APPROVED

[Signature]
FOR DIRECTOR

FOR DIRECTOR

CHD.

[Signature]

[Signature]
PASSED

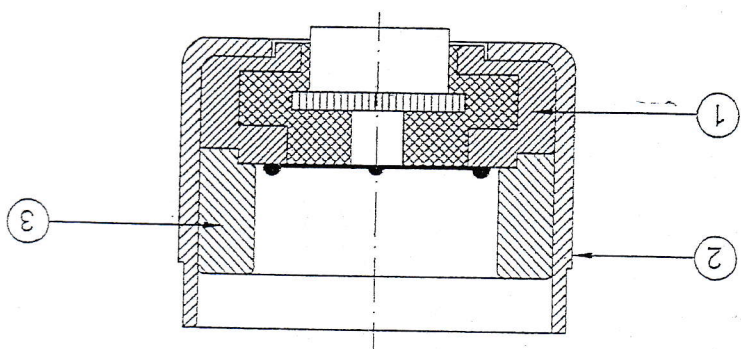
DRN. L.S. NAG

DATE: 24-02-2011

R. No.	DATE	AUTHORITY	ZONE	BRIEF RECORD	CD.	GO.	SIGN.

LIST OF COMPONENTS

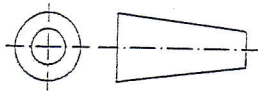
S.No.	NOMENCLATURE	DRG No.	DET No.	QTY.
3	DISTANCE PIECE	HEMRL/PYRO/H/SK.021	6	1
2	CAP SHELL	HEMRL/PYRO/H/SK.021	7	1
1	SQUIB PLUG (BRIDGED)	HEMRL/PYRO/H/SK.021	2	1



F
E
D
C
B
A

HIGH ENERGY MATERIALS RESEARCH
LABORATORY, PUNE - 411021

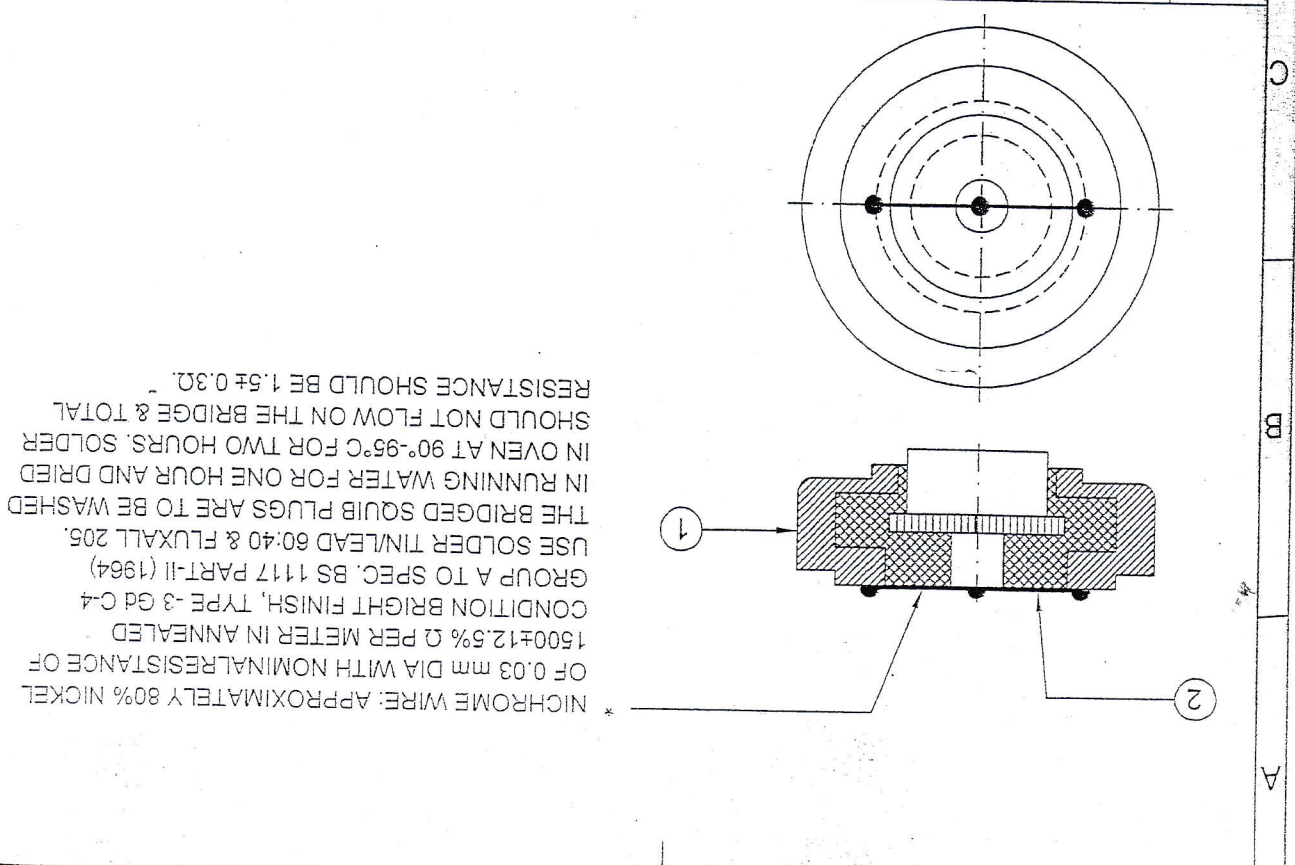
DESIGN AUTHORITY:		A.H.S.P.	
PART No.		D.S. CAT. No.	
DET. No. 2	SHTS.	SHT. No.	
DRG. No.		HEMRL/PYRO/H/SK.021	
TITLE:		SQUIB PLUG (BRIDGED)	
PROTECTIVE FINISH:		ASSY. DRG. HEMRL/PYRO/H/SK.021/1	
MATERIAL:		FOR DIRECTOR	
ALL DIMENSIONS ARE IN mm UNLESS OTHERWISE STATED		APPROVED	
GAGE SCHD:		CHD.	
EST. MASS:		DRN. L.S. NAG	
SCALE: 5:1		DATE: 24-02-2011	
DRAWING:		PASSED	



DEVIATION FOR UNTOLERANCED DIMENSIONS TO CONFORM TO SPEC. IS: 2102 MEDIUM		DRAWING CONVENTIONS CONFORM TO IS SPEC.	
R. No.	DATE	AUTHORITY	ZONE

LIST OF COMPONENTS

S.No.	NOMENCLATURE	DRG No./ITEM	DET No.	QTY.
1	SQUIB PLUG (EMPTY)	HEMRL/PYRO/H/SK.021	3	1
2	BRIDGE WIRE	AS ABOVE	-	1

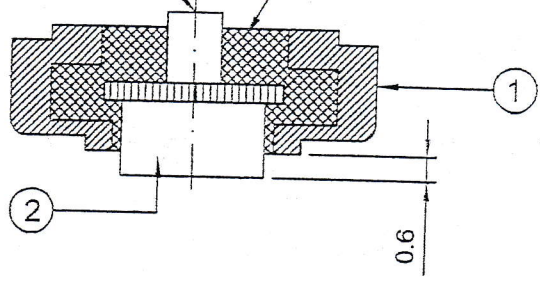


1 2 3 4

A

POLE PIECE TO BE FACED TO MATCH WITH HOUSING SURFACE

INSULATING MATERIAL



B

NOTE

1. INSULATING MATERIAL : PF. MOULDING POWDER WITH GLASS AS FILLER (Gd-SP-16) TO SPEC. JSS-1097
2. FOR INSULATING LAYER, COMPRESSION INJECTION MOULDING MAY BE USED
3. INSULATION RESISTANCE CHECKED AT 100 VDC SHOULD NOT BE LESS THAN 20 Mega Ω . AS MEASURED BY MEGGER (HIGH RESISTANCE METER)

C

2	POLE PIECE	HEMRL/PYRO/H/SK.021	5	1
1	HOUSING	HEMRL/PYRO/H/SK.021	4	1
S.No.	NOMENCLATURE	DRG No.	DET No.	QTY.

LIST OF COMPONENTS

D

R. No.	DATE	AUTHORITY	ZONE	BRIEF RECORD	CD.	GO.

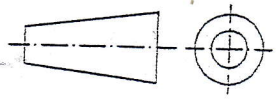
DEVIATION FOR UNTOLERANCED DIMENSIONS TO CONFORM TO SPEC. IS: 2102 MEDIUM

DRAWING CONVENTIONS CONFORM TO IS SPEC.

SCALE: 5:1

EST. MASS:

GAUGE SCHD:



DRAWING :

DRN. L.S. NAG

DATE: 24-02-2011

CHD.

[Signature]

PASSED
[Signature]

ALL DIMENSIONS ARE IN mm UNLESS OTHERWISE STATED

MATL: _____

APPROVED

[Signature]

FOR DIRECTOR

PROTECTIVE FINISH: _____

ASSY. DRG. HEMRL/PYRO/H/SK.021/2

TITLE:

SQUIB PLUG (EMPTY)

DRG. No.

HEMRL/PYRO/H/SK.021

F

DESIGN AUTHORITY:

HIGH ENERGY MATERIALS RESEARCH LABORATORY, PUNE - 411021

DET. No. 3

SHTS.

SHT. No.

PART No.

D.S. CAT. No.

AHSP

HIGH ENERGY MATERIALS RESEARCH LABORATORY, PUNE - 411021

DESIGN AUTHORITY:

HOUSING

DRG. No. HEMRL/PYRO/H/SK.021

ASSY. DRG. HEMRL/PYRO/H/SK.021/3

FOR DIRECTOR

APPROVED *[Signature]*

CHD. *[Signature]* PASSED *[Signature]*

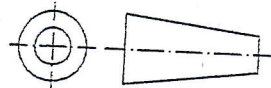
DRN. L.S. NAG DATE: 24-02-2011

DRAWING: 1

PROTECTIVE FINISH : SILVER PLATING TO SPEC. IS:1771 Gd-2

MATL : BRASS TO SPEC. IS:319 Gd-1

ALL DIMENSIONS ARE IN mm UNLESS OTHERWISE STATED



GAUGE SCHD :

EST. MASS :

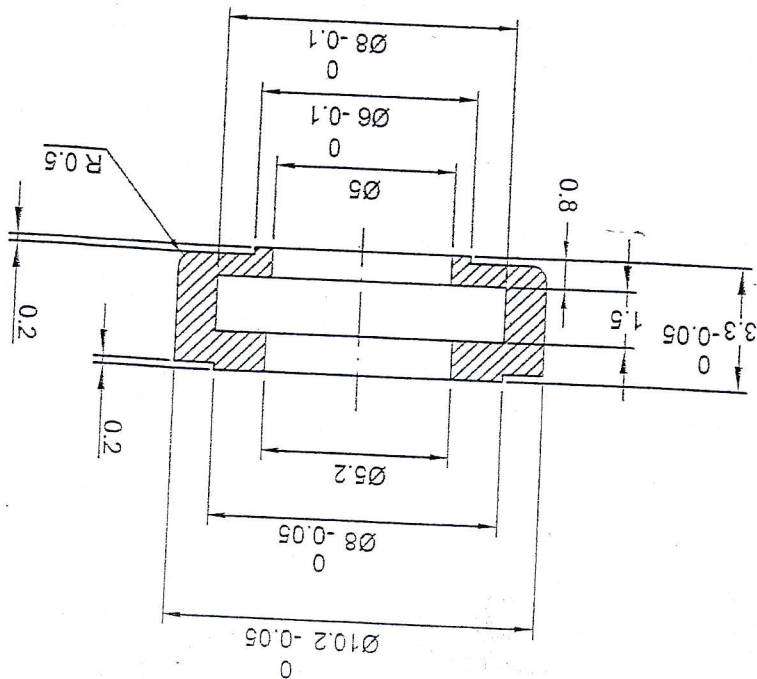
SCALE: 5:1

DEVIATION FOR UNTOLERANCED DIMENSIONS
TO CONFORM TO SPEC. IS: 2102 MEDIUM

DRAWING CONVENTIONS CONFORM
TO IS SPEC.

R. No.	DATE	AUTHORITY	ZONE	BRIEF RECORD	CD.	GO.	SIGN.

NOTE: REMOVE ALL SHARP EDGES, CORNERS & BURRS UNLESS OTHERWISE STATED



HIGH ENERGY MATERIALS RESEARCH
LABORATORY, PUNE - 411021

DESIGN AUTHORITY:

A.H.S.P.		
D.S. CAT. No.		
PART No.		
DET. No. 5	SHTS.	SHT. No.

POLE PIECE

TITLE :

HEMRL/PYRO/H/SK.021		
DRG. No.		

PROTECTIVE FINISH: SILVER PLATING TO SPEC. IS: 1771 Gd-2

MATL: BRASS TO SPEC. IS: 319 Gd-1

APPROVED *[Signature]*

FOR DIRECTOR

ALL DIMENSIONS ARE IN mm UNLESS OTHERWISE STATED

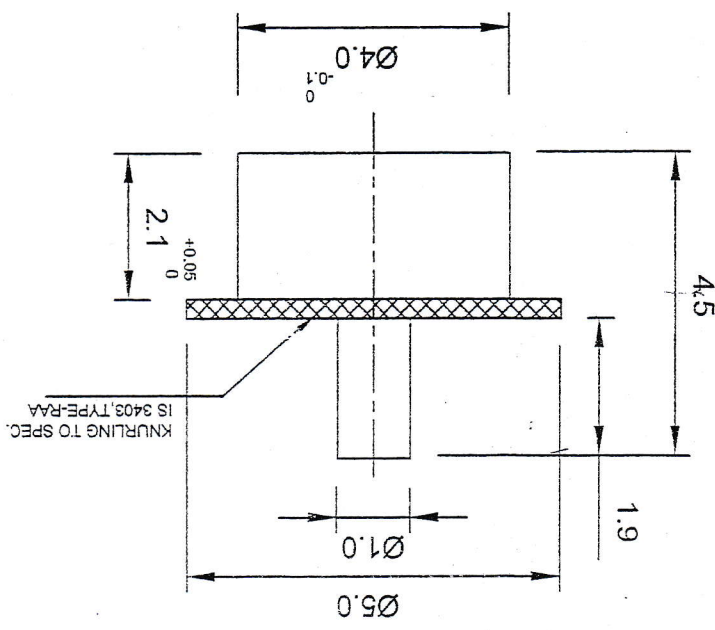
SCALE: 10:1		EST. MASS :	CHD. <i>[Signature]</i>	SEALD BY
GAGE SCHD :		DRN. R.N. RAUT	DATE: 17-10-2013	PASSED <i>[Signature]</i>

DEVIATION FOR UNTOLERANCED DIMENSIONS TO CONFORM TO SPEC. IS: 2102 MEDIUM

DRAWING CONVENTIONS CONFORM TO IS SPEC.

R. No.	DATE	AUTHORITY	ZONE	BRIEF RECORD	SIGN.
1	17-10-2013	J.D./PYRO	B-3	DIA. Was 1.5mm	<i>[Signature]</i>

NOTE: REMOVE ALL SHARP EDGES, CORNERS & BURRS UNLESS OTHERWISE STATED



HIGH ENERGY MATERIALS RESEARCH LABORATORY, PUNE - 411021

DESIGN AUTHORITY:

DISTANCE PIECE

TITLE:

PROTECTIVE FINISH : SILVER PLATING TO SPEC. IS:1771 Gd-2

MATL : BRASS TO SPEC. IS:319 Gd-1

MATL :

ALL DIMENSIONS ARE IN mm UNLESS OTHERWISE STATED

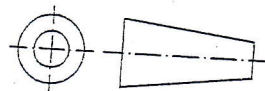
GAUGE SCHD :

EST. MASS :

SCALE: 5:1

DEVIATION FOR UNTOLERANCED DIMENSIONS TO CONFORM TO SPEC. IS: 2102 MEDIUM

DRAWING CONVENTIONS CONFORM TO IS SPEC.



DRAWING: DRN. L.S. NAG DATE: 24-02-2011

CHD. *[Signature]*

PASSED *[Signature]*

APPROVED

FOR DIRECTOR

ASSY. DRG. HEMRL/PYRO/H/SK.021/1

DRG. No.

HEMRL/PYRO/H/SK.021

DET. No. 6 SHTS. SHT. No.

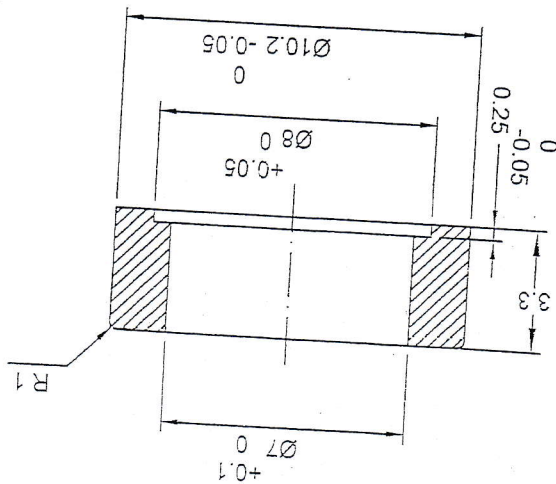
PART No.

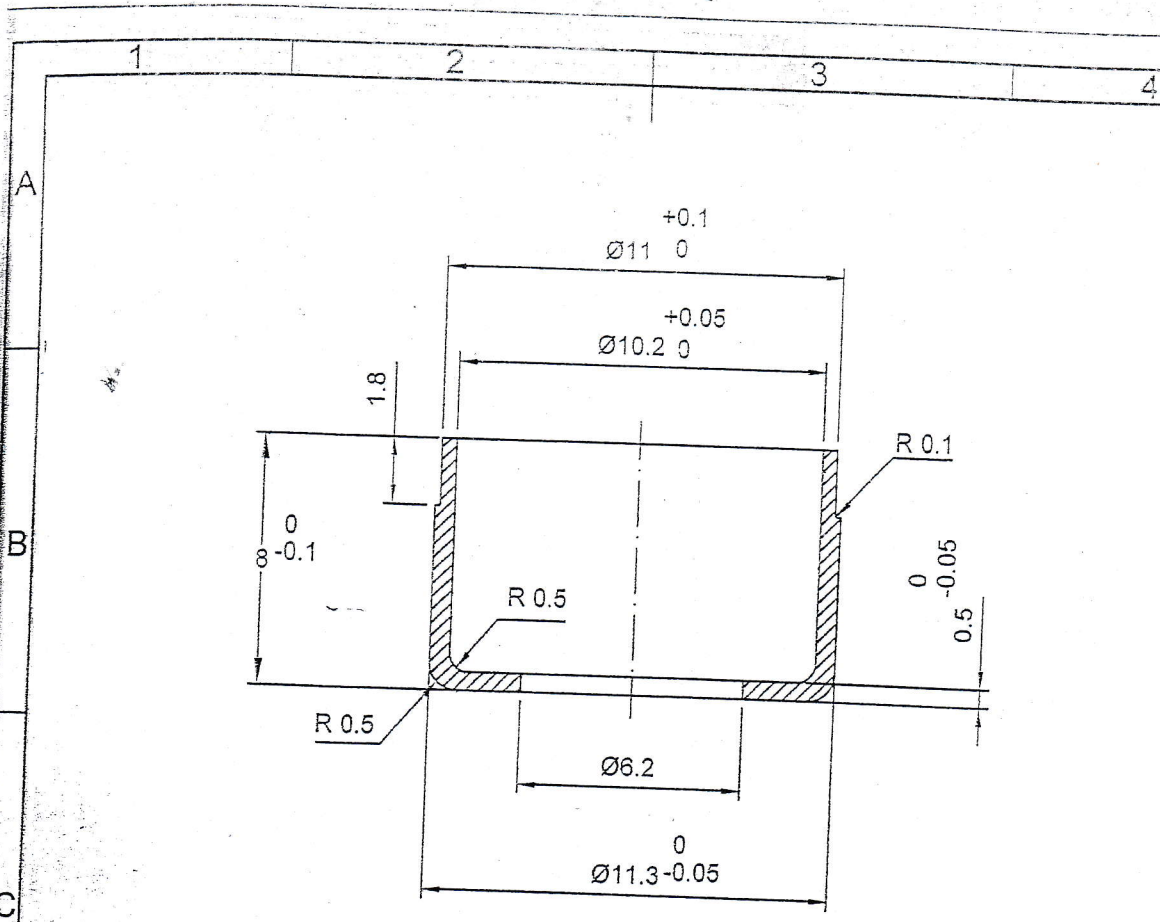
D.S. CAT. No.

A.H.S.P.

R. No.	DATE	AUTHORITY	ZONE	BRIEF RECORD	
				CD. GO.	SIGN.

NOTE: REMOVE ALL SHARP EDGES, CORNERS & BURRS UNLESS OTHERWISE STATED





NOTE: REMOVE ALL SHARP EDGES, CORNERS & BURRS UNLESS OTHERWISE STATED

R. No.	DATE	AUTHORITY	ZONE	BRIEF RECORD	CD.	GO.

DEVIATION FOR UNTOLERANCED DIMENSIONS TO CONFORM TO SPEC. IS: 2102 MEDIUM

DRAWING CONVENTIONS CONFORM TO IS SPEC.

SCALE: 5:1

EST. MASS:

GAUGE SCHD:

ALL DIMENSIONS ARE IN mm UNLESS OTHERWISE STATED

MATL:

BRASS TO SPEC. IS:410 Cu-Zn 30 ANNEALED
CONDITION 'HB'

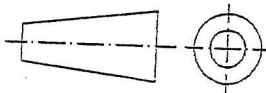
PROTECTIVE FINISH: PASSIVATION TO SPEC. L10205 'B'

TITLE:

CAP SHELL

DESIGN AUTHORITY:

HIGH ENERGY MATERIALS RESEARCH
LABORATORY, PUNE - 411021



DRAWING:

DRN. L.S. NAG

DATE: 24-02-2011

CHD.

PASSED

APPROVED

FOR DIRECTOR

ASSY. DRG. HEMRL/PYRO/H/SK.021/1

DRG. No.

HEMRL/PYRO/H/SK.021

DET. No. 7

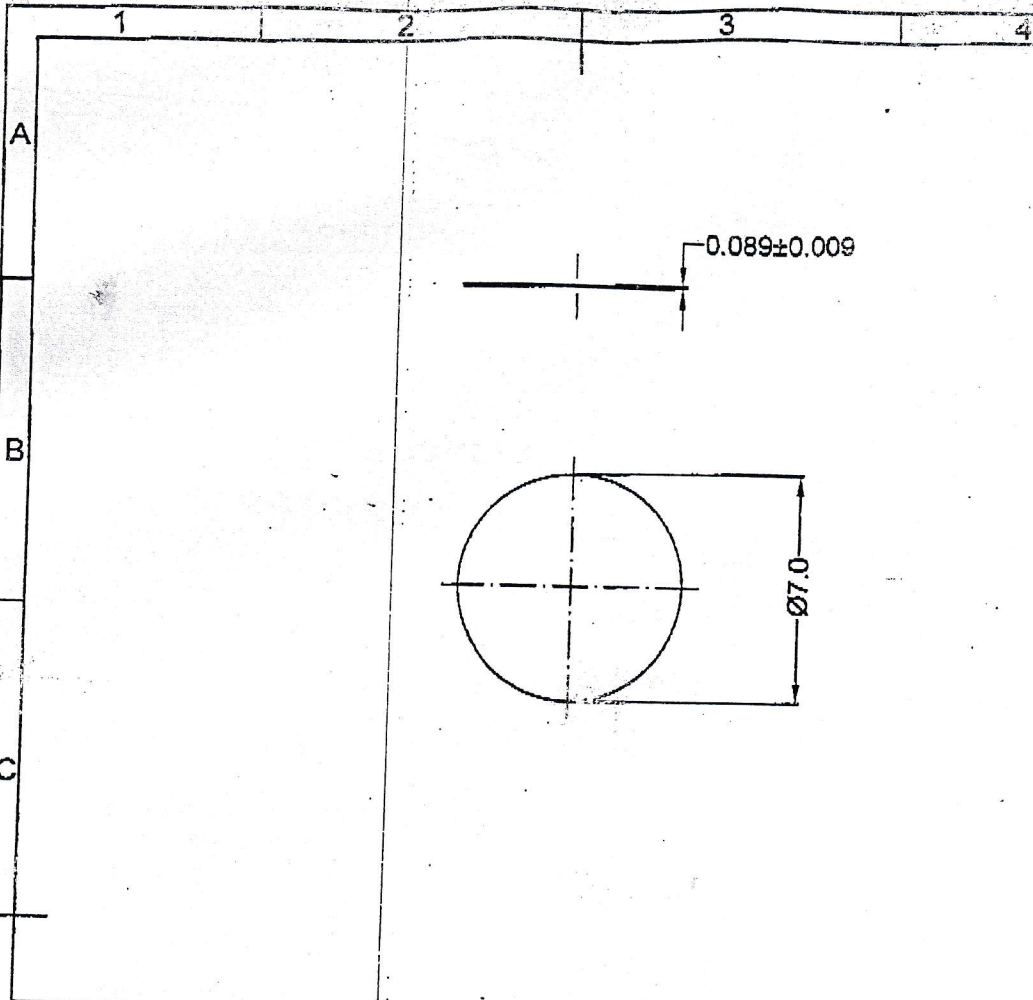
SHTS.

SHT. No.

PART No.

D.S. CAT. No.

A.H.S.P.



2		08/11/16	JD/PYRO	A,B-2,3	THICKNESS 0.08 CHANGED TO 0.089±0.009		
1		11/12/14	JD/PYRO	E,F-1,2	TITLE/ MATERIAL		
R. NO.	DATE	AUTHORITY	ZONE	BRIEF RECORD			CD. GO.
DEVIATION FOR UNTOLERANCED DIMENSIONS TO CONFORM TO SPEC. IS: 2102 MEDIUM				DRAWING CONVENTIONS CONFORM TO IS SPEC.			
SCALE: 5:1				DRAWING: <i>[Signature]</i>			
EST. MASS :				DRN. R. N. RAUT		DATE: 11-12-2014	
GAUGE SCHD :				CHD. <i>[Signature]</i>		PASSED <i>[Signature]</i>	
ALL DIMENSIONS ARE IN mm UNLESS OTHERWISE STATED							
MATL : PAPER WHITE FINE TO		JSS 9310-06 : 2002		APPROVED <i>[Signature]</i> DATE: 11/11/16 FOR DIRECTOR			
PROTECTIVE FINISH : —				ASSY. DRG. HEMRL/PYRO/H/SK.021			
TITLE :		PAPER DISC		DRG. NO. HEMRL/PYRO/H/SK.021			
DESIGN AUTHORITY:		HIGH ENERGY MATERIALS RESEARCH LABORATORY, PUNE - 411021		DET. NO. 8		SHTS. SHT. NO.	
				PART NO.			
				D.S. CAT. NO.			
				A.H.S.P.			