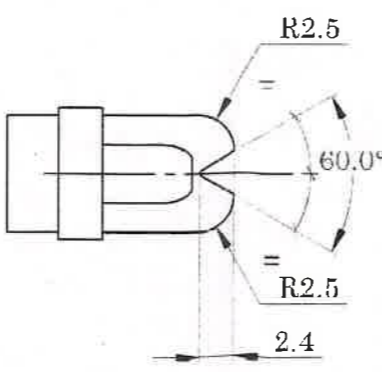
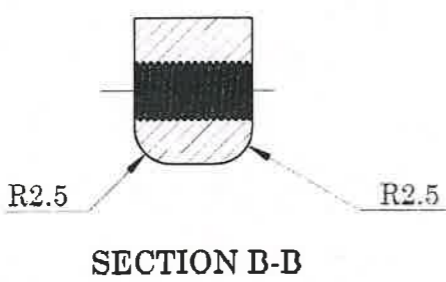
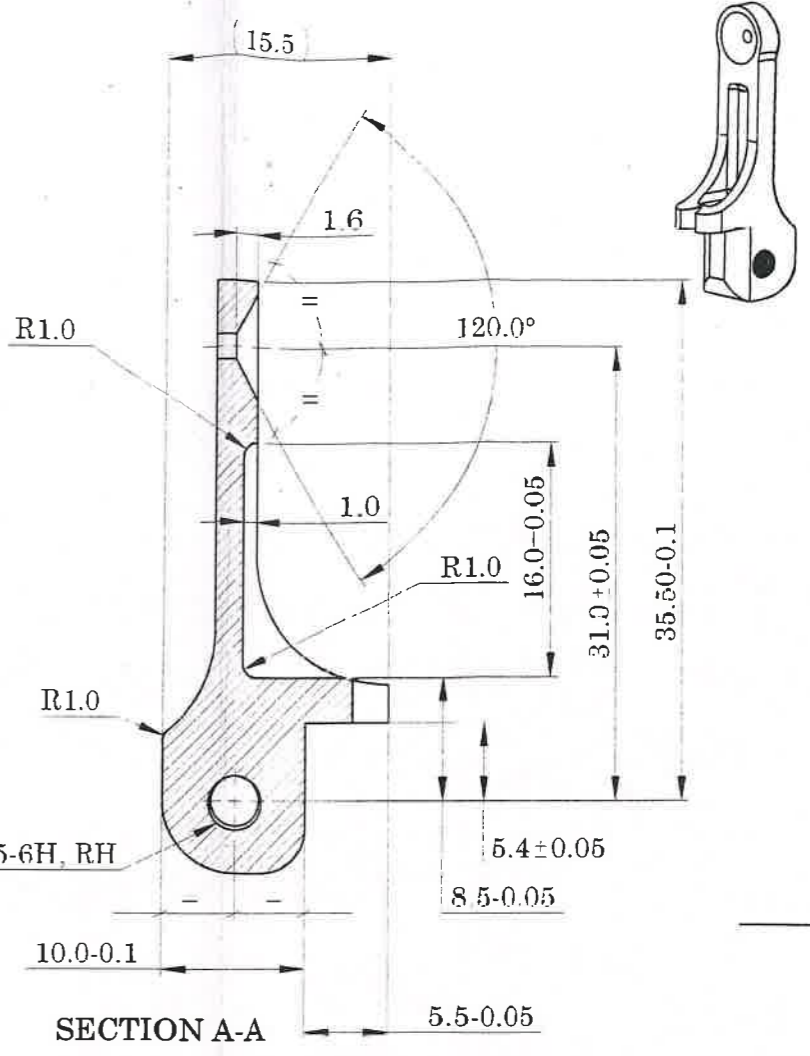
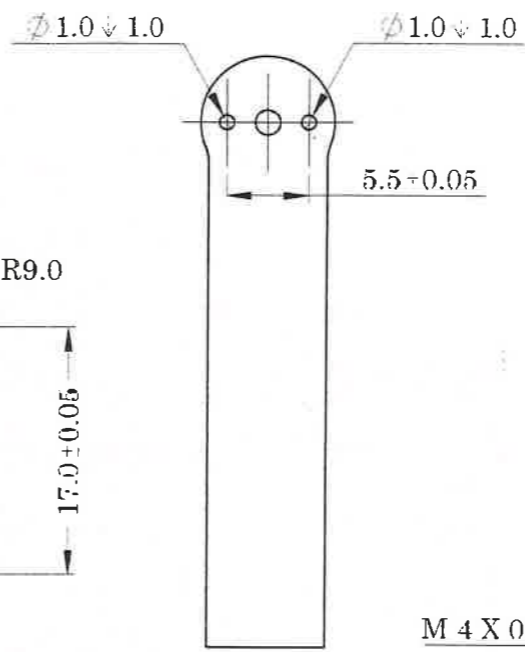
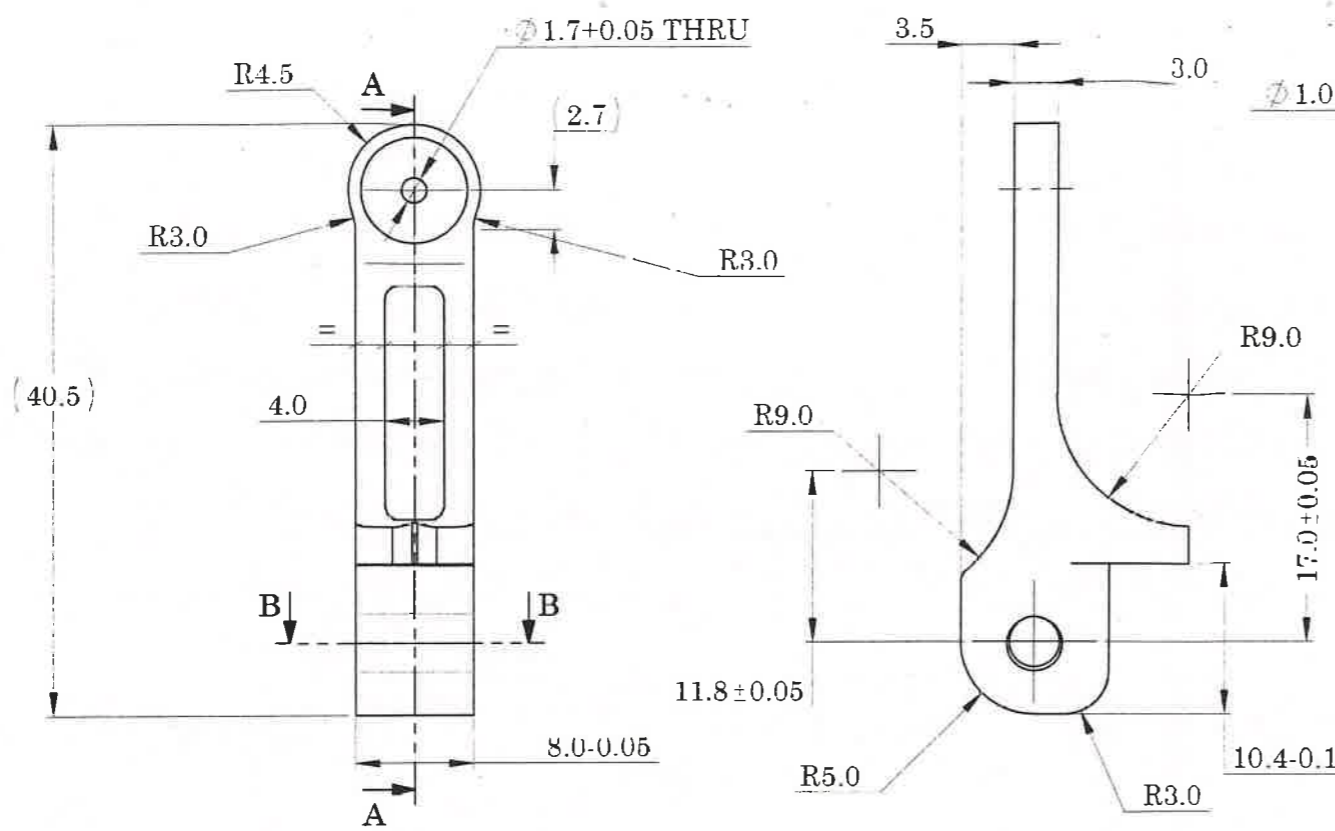


JSS O V VV S SS IC  
 V D 0 0 Z I 0 5 0 I 0 2 0 I 0 1 0 1 7 DRG No.

GENERAL TOL. : FINE / MEDIUM / COARSE CLASS TO IS: 2102  
 DRG. CONVENTIONS CONFIRM TO INDIAN STANDARDS DIMENSIONS ARE IN mm UNLESS OTHERWISE STATED.



CONTROLLED COPY No.: 01

- NOTE:
- 1.REMOVE ALL SHARP EDGES AND BURRS.
  - 2.ANGULAR TOLERANCE IS 30' OR OTHERWISE STATED.
  - 3.DIMENSIONS ARE TO BE READ AFTER APPLYING PROTECTIVE FINISH.
  - 4.IF THE COMPONENT IS TO BE MANUFACTURED THROUGH MIM ROUTE, REFER ARDE SPECN No: DRDO-ARDE-MIM-TSP-051-2019.
  - 5.MATERIAL: ALUMINIUM ALLOY TO DTD 5124 OR IS:733:1983 Gd76528 OR ASTM B 221M-0.5 AL 7075 TEMPER T6511
  - 6.BLACK HARD ANODIC COATING TO IS 6057:1988 COATING THICKNESS - 0.050-0.075 mm. COATING HARDNESS - 400-450 HV IS 5523 ANODIC COATING TESTING
  - 7.SURFACE FINISH ▽ ALL OVER UNLESS OTHERWISE SPECIFIED.

Sr. No.	DATE	AUTHORITY	BRIEF RECORD	ZONE	CD SIGN	GO SIGN
	DRN: SOURABH SIGN: DATE: 24/08/2022	<i>[Signature]</i> CHECKED	MATERIAL:  SEE NOTES			
	APPD. DATE: 24/08/2022	<i>[Signature]</i> FOR DIRECTOR	PROTECTIVE FINISH:  SEE NOTES			
	SEALED DATE:					
	SHEET SIZE: A3 SCALE: 2:1	EST. MASS 12.44 gm	TITLE:  REAR SIGHT			
	DESIGN AUTHORITY ARDE PUNE 411021					
DRG No.	2 1 0 1	0 1	0 2	0 1	0 5	0 1 2
	IC	SS	S	AA	A	C
9 mm	PART No.	DS CAT No.	AHSP			

DRG No. 2 1 0 1 0 1 0 2 0 1 0 5 0 1 2 0 0 D A  
 IC SS S AA A C SST