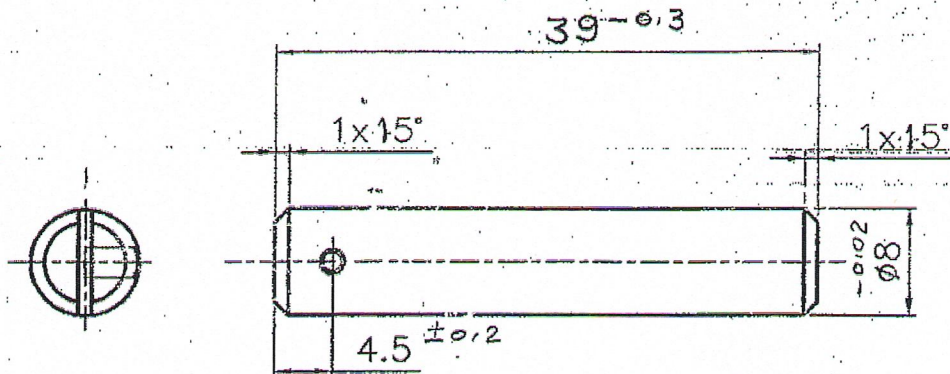


DRG. NO. 44P 03008*2

DIMENSIONS ARE IN mm.
 UNTOLERATED DIMNS. AS PER IS : 2102 (MED)
 MARK DRAWING No.

DRG. PROVISIONAL



ON CONTROLLED COPY

CERTIFIED CORRECT COPY
 OF APPROVED DRAWINGS
 AT THIS DATE

22/10/19
 Design & Drawing Office
 Ordnance Factory,
 Tiruchirappalli-620015.

CHROME FLASH - 0.01mm MAX

① en
 20/3/07

IS: 6527-1995 DESIGN. X04 Cr18 Ni10
 MATERIAL: ~~17/4 PH SS (Cr-17%, Ni-4%, C-0.06 to 0.08%)~~
 ALT. MATL: EN19
 IS: 5517-1993 DESIGN. A-2 Cr4 Mo2 - LRS 63
 FINAL HARDNESS : RC 34-41

0.4

PART NO.	DESCRIPTIONS	NO OFF	MATERIAL	TREATMENT	REMARKS
	SIGNATURE & DATE.	SUB: BOLT LEVER PIVOT PIN			SCALE NTS
	TRACED	FOR: 20mm BOLT ASSY.			STORE DRG.NO.
	DRAWN	OF: 14.5mm/20mm AMR			OPERATION NO.
	CHECKED	DES. REF. NO.			
	OIC/D&DO	DRG. No.: 44P 03008*2			
	OFFICER/PRODN.	ORDNANCE FACTORY TIRUCHIRAPPALLI-16.			SHEETS: 1
	OFFICER/D&DO				SHEET No.: 1
AMENDMENTS	SIG. & DATE	APPROVED ON. 07/05			

DA NO
 006/07

4-10-07

DA No. 044/19
 Dt. 18/7/19
 DA No. 07/19
 Sl. No. 3

48-5-19

AMENDMENTS

SIG. & DATE

APPROVED ON. 07/05

ORDNANCE FACTORY
 TIRUCHIRAPPALLI-16.

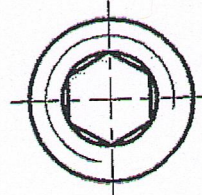
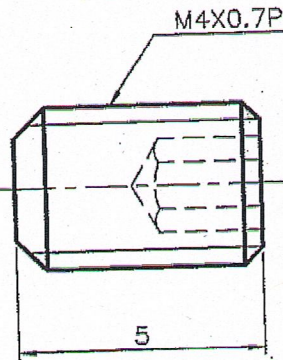
SHEETS: 1

SHEET No.: 1

DIMENSIONS ARE IN mm.
UNTOLERATED DIMNS. AS PER IS : 2102 (MED)

**CERTIFIED CORRECT COPY
 OF APPROVED DRAWINGS
 AT THIS DATE** 22/10/19

Design & Drawing Office
 Ordnance Factory,
 Tiruchirappalli-620016



Tiruchirappalli-620016
 Ordnance Factory,
 Design & Drawing Office

NON CONTROLLED COPY

**CERTIFIED CORRECT COPY
 OF APPROVED DRAWINGS
 AT THIS DATE**

- PART-1, 2006

HEXAGON SOCKET GRUB SCREW - M4X5, IS:6094
HIGH TENSILE

QTY. REQUIRED/GUN = 2 Nos.

① on 20/3/07

DRG. PROVISIONAL

PART NO.	DESCRIPTIONS	NO OFF	MATERIAL	TREATMENT	REMARKS
①	SUB: GRUB SCREW FOR: 20mm BOLT ASSY. OF: 14.5/20 mm AMR DES. REF. NO. DRG. No.: 44P 03018* ORDNANCE FACTORY TIRUCHIRAPPALLI-16.				SCALE N.T.S. STORE DRG. NO. OPERATION NO. SHEETS: 1 SHEET No.: 1
81.No: 22 DA.No. 002/19 30-2-19 SIG. & DATE	TRACED DRAWN <i>P. Murugesan</i> CHECKED <i>[Signature]</i> OIC/D&DO <i>[Signature]</i> OFFICER/PRODN. OFFICER/D&DO APPROVED ON. 08/2005				

①



DIMENSIONS ARE IN mm.

UNTOLERATED DIMNS. AS PER IS : 2102 (MED)

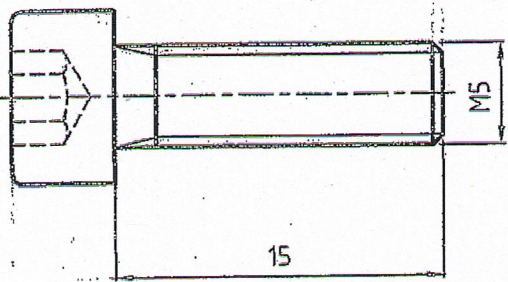
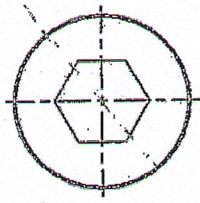
IS: 2102 (MED)

STANDARD DRAWING TO IS: 2102 (MED)

STANDARD DRAWING TO IS: 2102 (MED)

STANDARD DRAWING TO IS: 2102 (MED)

STANDARD DRAWING TO IS: 2102 (MED)



CERTIFIED CORRECT COPY
OF APPROVED DRAWING
AT THIS DATE


Handwritten signature

Design & Development
Ordnance Factory,
Tiruchirappalli-2016

UN CONTROLLED COPY

MATERIAL : STD. SOC HD CAP. SCREW M5X15 ~~FT/11~~ IS:2269-2006
HARDNESS : HIGH TENSILE

DRG. PROVISIONAL

PART NO.	DESCRIPTIONS	NO OFF	MATERIAL	TREATMENT	REMARKS
	SIGNATURE & DATE.	SUB: SOCHD CAP SCREWM5X15			SCALE NTS
	TRACED	FOR: 20mm BOLT ASSY			STORE DRG. NO.
	DRAWN <i>S. Subant P.</i>	OF : 14.5/20mm AMR			OPERATION NO.
	CHECKED <i>[Signature]</i>	DES. REF. NO.			
	OIC/D&DO <i>[Signature]</i>	DRG. No.: 44P 03019			SHEETS: 1
	OFFICER/PRDGN.	 ORDNANCE FACTORY TIRUCHIRAPPALLI-16.			SHEET No.: 1
	OFFICER/D&DO				
AMENDMENTS	SIG. & DATE	APPROVED ON.	08/2005		

DIMENSIONS ARE IN mm.

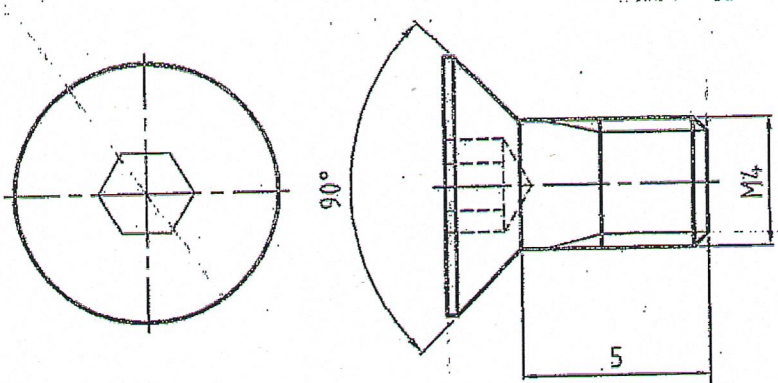
UNTOLERATED DIMNS. AS PER IS : 2102 (MED)

REF. DRAWING No.

14.5 BOLT ASSY

14.5/20mm AMR

ORDNANCE FACTORY TIRUCHIRAPPALLI-16.



UN CONTROLLED COPY


CERTIFIED COPY OF APPROVED AT THIS

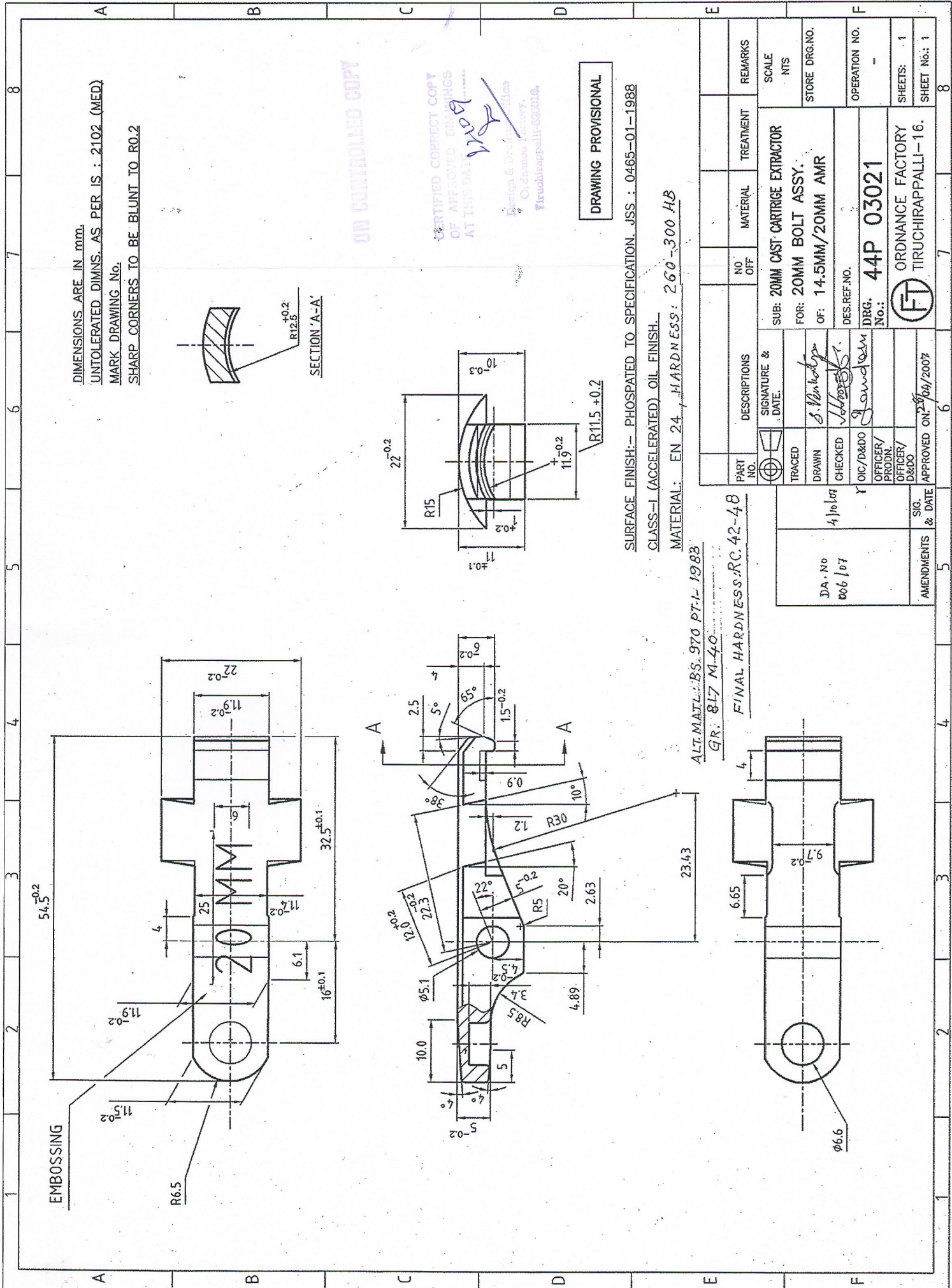
[Handwritten Signature]

Design & Drawn

MATERIAL: HEX. SO. CSK. HD. SCREW M4X5 [M4] IS: 6761-1994 HIGH TENSILE

DRG. PROVISIONAL

PART NO.	DESCRIPTIONS	NO OFF	MATERIAL	TREATMENT	REMARKS
⊕	SIGNATURE & DATE.	SUB: CSK CAP SCREW M4X5			SCALE NTS
TRACED		FOR: 14.5 BOLT ASSY			STORE DRG. NO.
DRAWN	<i>S. Inbaraj</i>	OF: 14.5/20mm AMR			OPERATION NO.
CHECKED	<i>[Signature]</i>	DES. REF. NO.			
OIC/D&DO	<i>[Signature]</i>	DRG. No.: 44P 03020			
OFFICER/PRODN.		 ORDNANCE FACTORY TIRUCHIRAPPALLI-16.			SHEETS: 1
OFFICER/D&DO					SHEET No.: 1
AMENDMENTS	SIG. & DATE	APPROVED ON. 08/2005			



DIMENSIONS ARE IN mm.
 UNTOLERATED DIMS. AS PER IS : 2102 (MED).
 MARK DRAWING No.
 SHARP CORNERS TO BE BLUNT TO R0.2

SECTION 'A-A'

ON CONTROLLED COPY

CERTIFIED CORRECT COPY
 OF APPROVED DRAWINGS
 AT THIS DATE


Design & Dev. Office
 Ordnance Factory,
 Tiruchirappalli-620016.

DRAWING PROVISIONAL

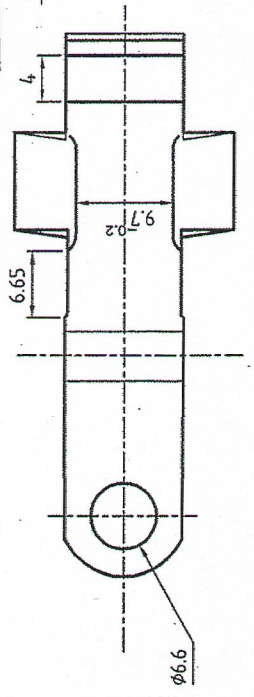
SURFACE FINISH:- PHOSPHATED TO SPECIFICATION. JSS : 0465-01-1988
 CLASS-I (ACCELERATED) OIL FINISH.
 MATERIAL: EN 24, HARDNESS: 260-300 HB

ALT. MATL: BS. 970 PT.-1-1988
 GR: 817 M-40

FINAL HARDNESS: RC. 42-48

PART NO.	DESCRIPTIONS	NO OFF	MATERIAL	TREATMENT	REMARKS
	SUB: 20MM CAST CARTRIDGE EXTRACTOR				SCALE NTS
	FOR: 20MM BOLT ASSY.				STORE DRG.NO.
	OF: 14.5MM/20MM AMR				OPERATION NO.
	DES. REF. NO.				SHEETS: 1
	DRG. No.: 44P 03021				SHEET No.: 1
 ORDNANCE FACTORY TIRUCHIRAPPALLI-16.					

DA. No 006/07	SIG. & DATE
4/10/07	2/26/2007
AMENDMENTS	APPROVED ON:

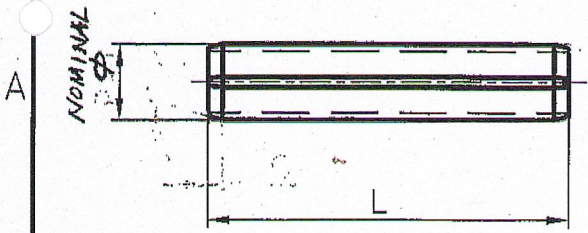


DIMENSIONS ARE IN mm.
 UNTOLERATED DIMNS. AS PER IS : 2102 (MED)

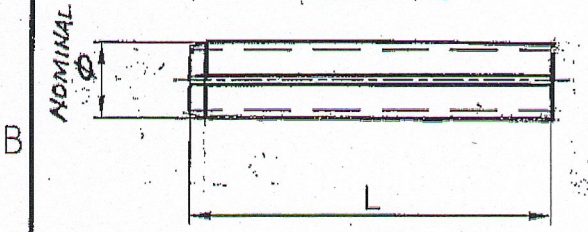
CERTIFIED CORRECT COPY
 OF APPROVED DRAWINGS
 AT THIS OFFICE

22/09
 [Signature]

Design & Drawing Office
 Ordnance Factory,
 Tiruchirappalli-620014.



TYPE-A



TYPE-B

MATERIAL: SS-316
 (STAINLESS STEEL)

ON CONTROLLED COPY

TYPE	NOMINAL Ø	ØD1	TOLERANCE ON ØD1	ØD2	ØD3	ØD4	L	DRAWING NO.	REMARKS
A LIGHT	2	2.3	±0.1	1.9	0.35	0.2	15.0	44 P 05010*	REFER IS : 5988 - 1970
	2.5	2.8	±0.1	2.3	0.45	0.25	15.0	44 P 05011*	
	3	3.3	±0.2	2.7	0.5	0.3	25.0	44 P 03017* 44 P 14019*	
	4	4.4	±0.2	3.4	0.7	0.5	14.0 20.0	44 P 04012* 44 P 03016*& 44 P 14018*	
B HEAVY	5	5.4	±0.2	4.4	1.0	0.5	16.0 26.0	44 P 04013*	
	6	6.4	±0.3	4.9	1.6	0.75	16.0	44 P 03015*& 44 P 14017*	

P. Joyan OIC/PSB S.I.No. 34 DA.No. 062/19 AMENDMENTS SIG. & DATE 30.3.19	PART NO.	DESCRIPTIONS	NO OFF	MATERIAL	TREATMENT	REMARKS
		SIGNATURE & DATE.	SUB: SELLOCK PINS (DOWEL SPRING PINS)			SCALE NTS
		[Signature]	FOR: 14.5/20 mm VIDHWANSAK ANTI-MATERIAL RIFLE			STORE DRG.NO.
		[Signature]	DES. REF. NO. IS : 5988 - 1970			OPERATION NO.
		[Signature]	DRG. No.: SEE ABOVE			SHEETS: 1
	OFFICER/PRDND.		ORDNANCE FACTORY, TIRUCHIRAPPALLI-16.			SHEET No.: 1
	OFFICER/D&DO					
	APPROVED ON: 29/1/2007					