

DETAIL K

UN CONTROLLED COPY

Material : Steel  
 BS:970 Pt.1 1983 Gr 709 M40 (En19)  
 BS:970 Pt.1 1983 Gr 708 M40 (En19A)  
 BS:970 Pt.1 1983 Gr 817 M40 (En24)

Hardness: 290-350 HV

Protective Finish :  
 Phosphating to Specn.  
 JSS: 0465-01-1994 Class II Oil Finish

Untolerated Dimens. as per IS:2102 (MED)

**Material for Casting:-**

BS:3146 PART-1, 1974 Class:5, Grade:A  
 Non Stressed Component

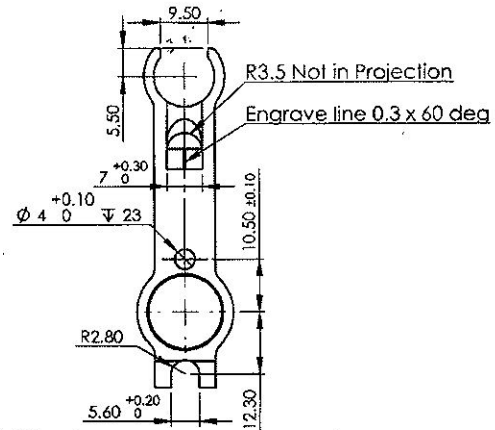
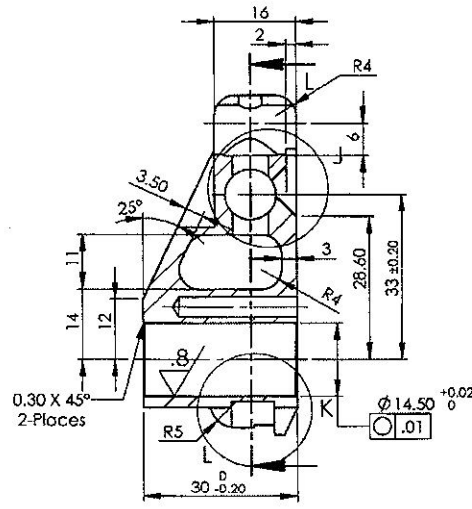
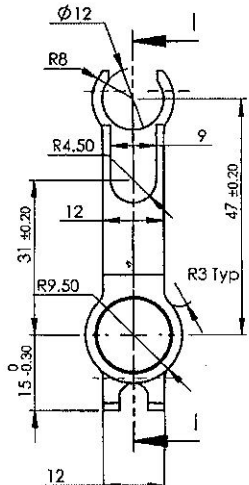
Radiographic Test as per ASTM-E-192

**Acceptance Standard:-**

Gas hole & Foreign Material: Level-3  
 Shrinkage (All Types) : Level 3

**Note:- for Casting**

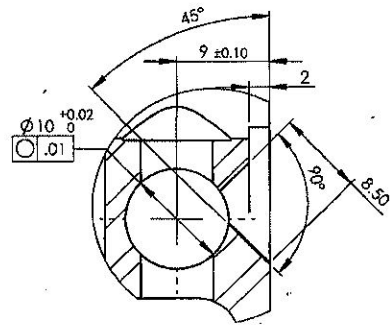
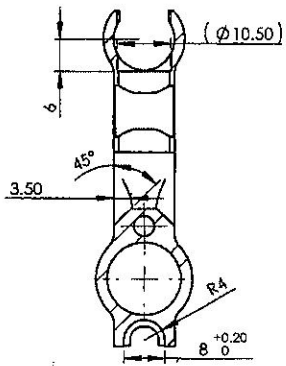
Tolerance as per IS:1166 Class-I  
 Flatness Tolerance :  $\pm 0.1 / 25.4$ mm  
 Casting Radius 0.5 mm



SECTION H-H

NOTED CORRECT COPY  
 APPROVED DRAWINGS  
 DATE 16.04.18

Design & Drawing Office  
 Ordnance Factory,  
 Tiruchirappalli 600016



SECTION L-L

DETAIL-J

AMENDMENTS	SIG. & DATE	SIGNATURE & DATE.	SUB: <b>Front Sight Block</b>	SCALE NTS
		TRACED	FOR: <b>Barrel Assy</b>	QPC 1
		DRAWN	OF: <b>TRICHY ASSAULT RIFLE</b>	Weight(g) 70.39 g
		CHECKED	DES. REF. NO. <b>K1207</b>	SHEETS: <b>1</b>
		O/C/D&DO <i>P. Taran</i>	DRG. No.: <b>TAR-K-1207</b>	SHEET No.: <b>1</b>
DIV. OFFICER/D&DO <i>Se. Kumar</i>		<b>ORDNANCE FACTORY TIRUCHIRAPPALLI-16.</b>		
APPROVED ON: 02/03/2018				