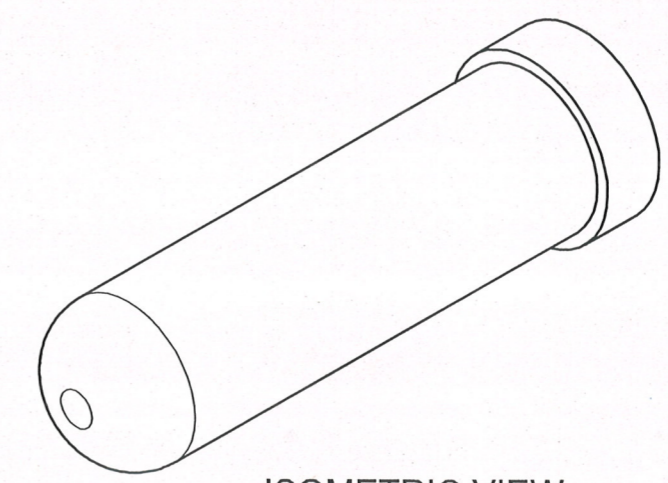
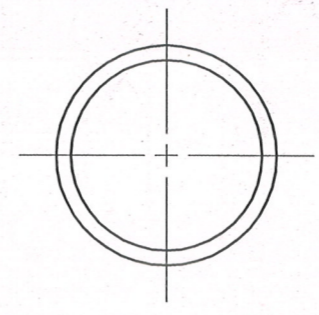
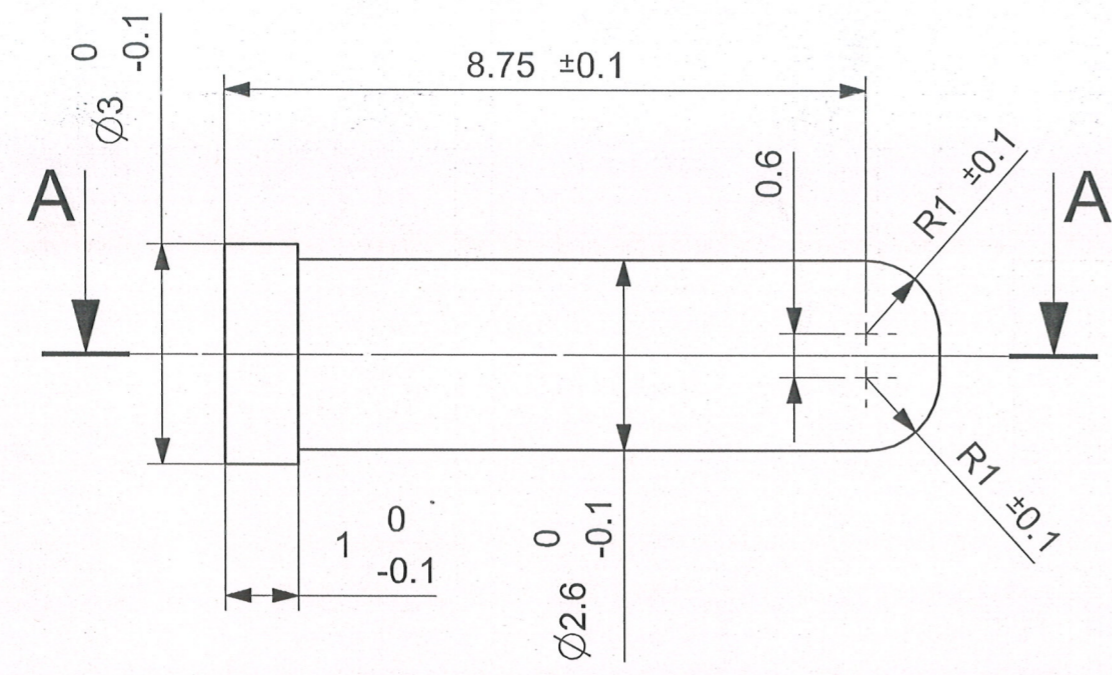
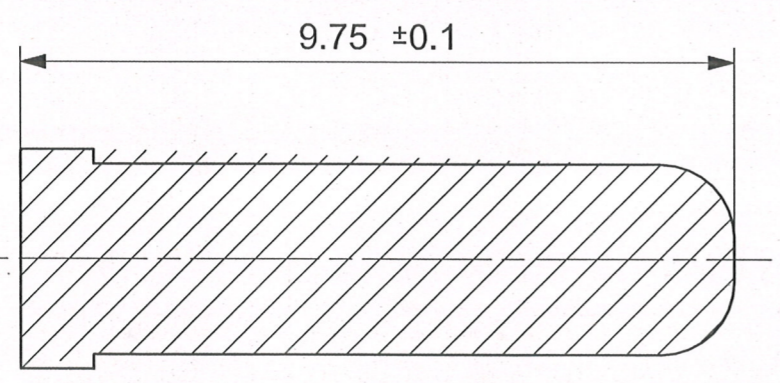


D. A. NO.



ISOMETRIC VIEW



SECTION A-A

**MATERIAL:-** STEEL BS970 Pt.1:1983 Gd.655M13 OR En-36

**HEAT TREATMENT:-** HARDENED & TEMPERED TO 500 - 550 H.V.  
WITH CASE DEPTH 0.13 TO 0.26 mm

**PROTECTIVE FINISH:-** PHOSPHATED TO SPECN. J.S.S.-0465-01:1988  
CLASS II (ACCELERATED) OIL FINISH.

DIMENSIONS ARE IN MM.

<b>REVOLVER.32 (7.65 mm) SIDE SWING</b>  <b>PIN CYLINDER CENTER LOCK</b>	DESIGNED BY	<i>Astana</i> A.S.RANA
	CHECKED BY	<i>JWM</i> JWM/DDO
	APPROVED BY	<i>WM</i> WM/DDO
	DATE	29.06.2019
SCALE 10 : 1	DRAWING NO.	
	<b>SMALL ARMS FACTORY</b> <b>KANPUR</b>	
	SHEET 1 OF 1	

A3