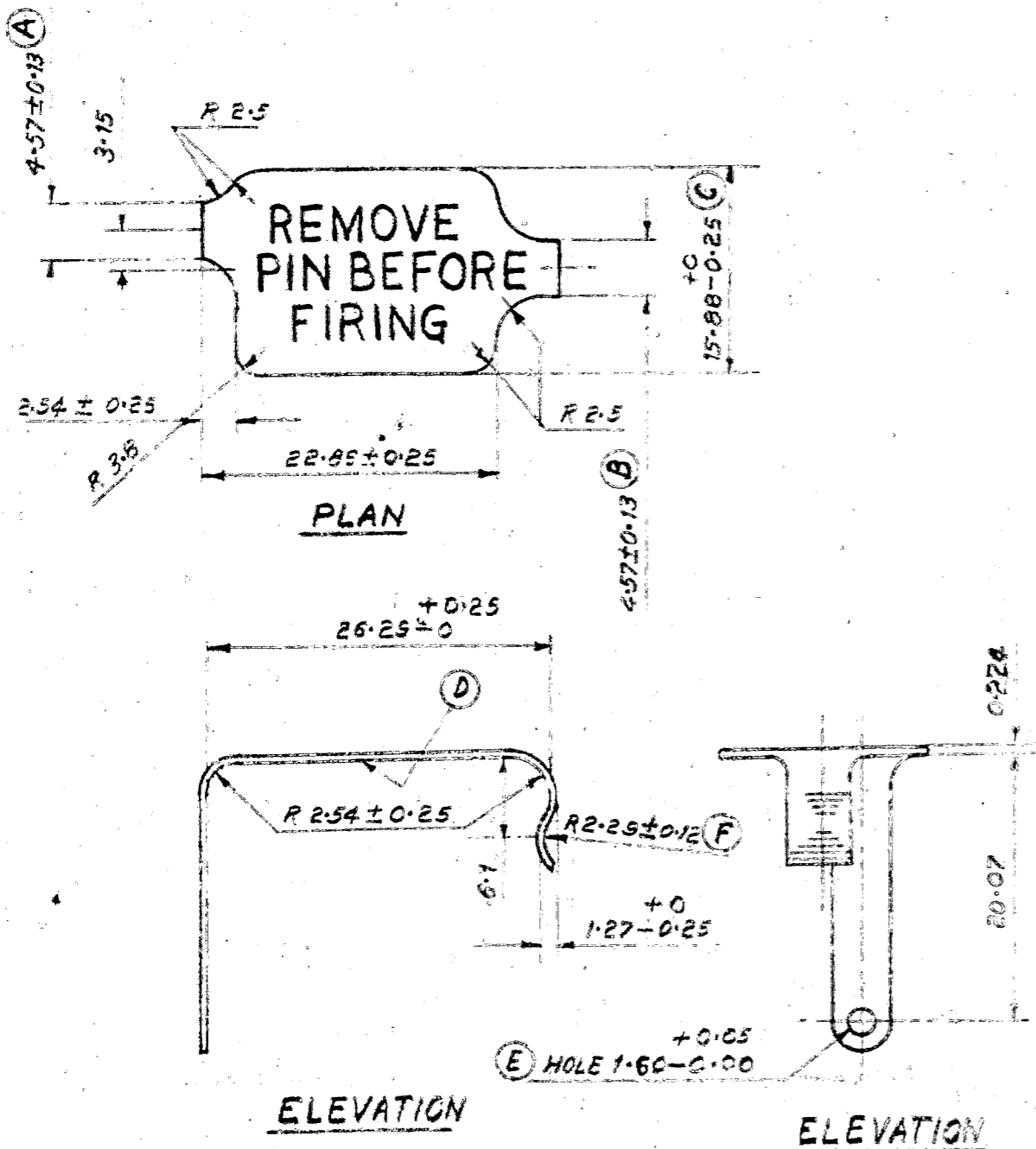


QX 439

DIMENSIONS ARE IN MM

D.C. 22472-A



IN RELATION TO THE LARGEST FEATURE (A) THE LARGEST FEATURES (B) AND (C) SHOULD BE WITHIN 0.127 OF THEIR CORRECT GEOMETRIC POSITION. IN RELATION TO THE LARGEST FEATURE (A) AND THE SURFACE FEATURE (D) THE SMALLEST FEATURES (E) SHOULD BE WITHIN 0.127 OF ITS CORRECT GEOMETRIC POSITION. IN RELATION TO THE SURFACE FEATURE (D) THE SMALLEST FEATURE (F) SHOULD BE WITHIN 0.127 OF ITS CORRECT GEOMETRIC POSITION.

NOTE:-

TO BE PASSIVATED IN ACCORDANCE WITH SPEC. L 10205 AMENDED TO DATE

NOTE:-

TOLERANCE ON UNTOLERANCED DIMENSIONS FOR ONE DECIMAL PLACE ± 0.13 FOR TWO OR MORE DECIMAL PLACES ± 0.13.

MATERIAL:-

BRASS TO SPEC. BS 2870-CZ 107 COLD ROLLED HARD, ALTERNATIVE BS 2870-CZ 108 COLD ROLLED HARD.

▽ ALL OVER

REMOVE PIN BEFORE FIRING

30-12-92	D.C. 35434-A	DIMS AMENDED UP TO 2 DECIMAL POINTS AND ASSY DRG. REF. ADDED.	DRN:- SDI-	CHD:- SDI-	TRD:- SWS	COMP:-	SCALE:- 2:1	
6-2-88		RETRACED WITHOUT CHANGE	CDMAN	CHD:- SDI-	APPD.	EST. MASS:-	GAGE SCHD:-	
		PREVIOUS D.C. (Nos): 22472-A, 24859-A, 27393-A, 28359-A, 30248-A, 30873-A AND 32000-A	SDI-	FOR C.O.A. (A)		DATE:- 12-1-50		
R. No	DATE	AUTHORITY	REVISION	ZONE	AMSP	MATERIAL:- AS ABOVE	DESIGN:-	
						PROTECTIVE FINISH:-	D.S. (L) 3052/E/374	
DRS SEALED 24-4-52							PART NO	QX 439

CLIP

D.S. CAT. No
AMSP:- C.Q.A. (A) KIRKEE