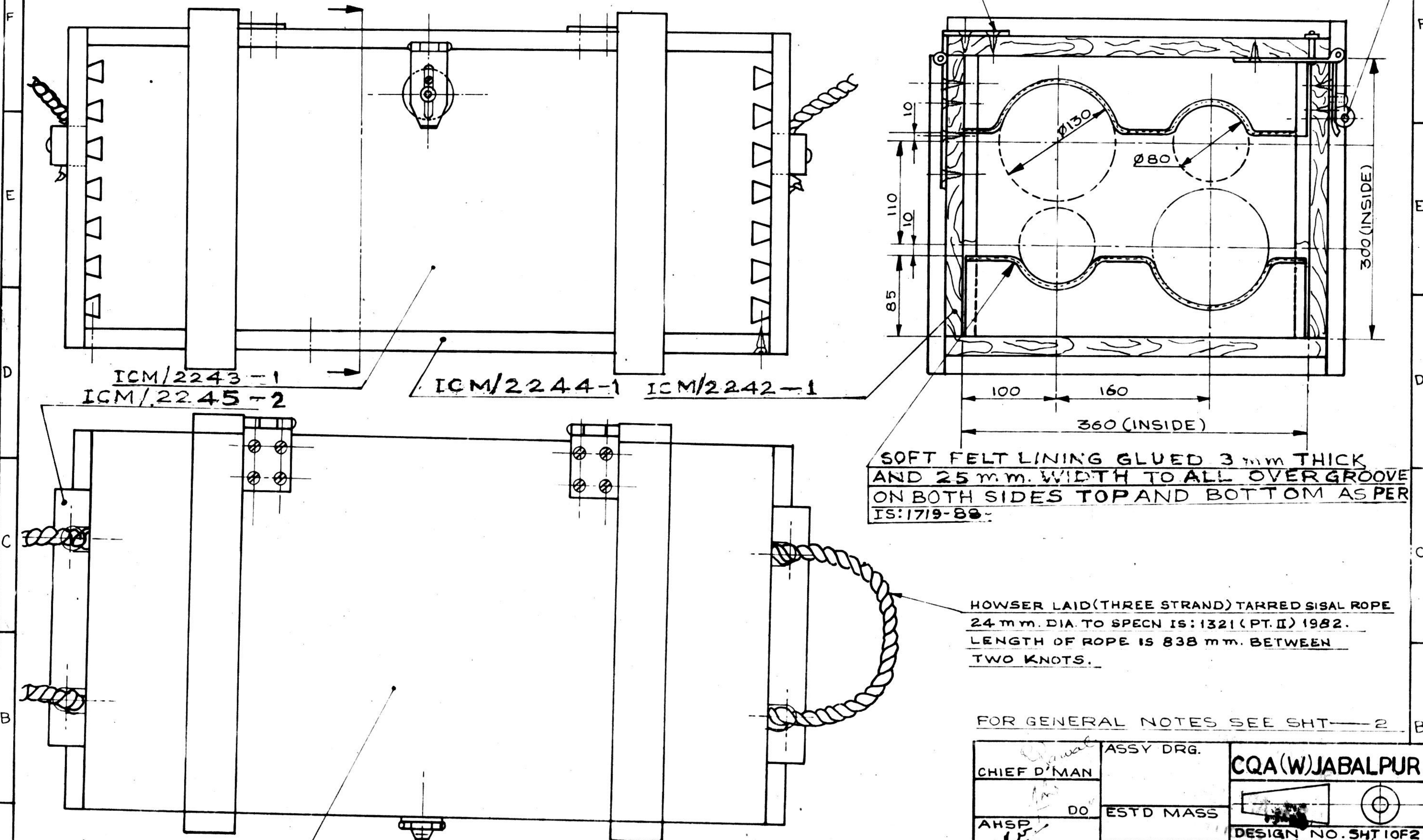


8 7 6 5 4 3 2 1
 DSCAT No. 8115-000749
 DRG. CONVENTIONS CONFORM TO IS: 696.
 DIMENSIONS ARE IN mm.
 WOOD SC. NO. 10X20 LONG-24 (IS: 6760-72)
 CM 995-1



ICM/2243-1 ICM/2245-2 ICM/2244-1 ICM/2242-1

SOFT FELT LINING GLUED 3 mm THICK AND 25 mm. WIDTH TO ALL OVER GROOVE ON BOTH SIDES TOP AND BOTTOM AS PER IS: 1719-88.

HOWSER LAID (THREE STRAND) TARRED SISAL ROPE 24 mm. DIA. TO SPECN IS: 1321 (PT. II) 1982. LENGTH OF ROPE IS 838 mm. BETWEEN TWO KNOTS.

FOR GENERAL NOTES SEE SHT-2

TO BE SUITABLY FITTED BY 3 SCREWS.

CHECKED BY DATE
 TRACED BY
 2.8.94
 S. P. D. Bagde

| | | |
|-----------------------------|-----------------------------|----------------|
| 18700-W 18-9-2002 | ZONE 2-C ROPE NOTE AMENDED. | EM |
| 21505-CQAW- QA-2/29.3-97 | DRG AMENDED | BAC |
| 21505-CQAW-QA2 8-2-95 | DESIGNATION AMENDED. | 18/9/95 CID |
| 21505-CQAW-QA2 7-1-95 | PART NO. ADDED. | 18/9/95 CID |

| | | | | | |
|------------|------------------|------------------------|--------|-----------|---------|
| 15-9-94 | 21505-CQAW(QA-2) | DS CAT NO. ADDED | | | |
| 2-8-94 | | NEW POLY NEG. PREPARED | | | |
| DATE | AUTHORITY | ZONE | NATURE | SIG. AHSP | SIG. DO |
| AMENDMENTS | | | | | |

| | | |
|---|------------|---------------------------------------|
| CHIEF D'MAN | ASSY DRG. | CQA(W) JABALPUR |
| DO | ESTD MASS | DESIGN NO. SHT 1 OF 2 CQA/WPN/1777 |
| AHSP | DATE | PART NO. SHT 1 OF 2 ICM 2240 |
| FOR CQA(W) DRG. SEALED 18352-W 25-4-97 | SCALE: NTS | DS CAT NO. SHT 1 OF 2 8115-000749 |
| DOCQA(W) | CHD: DP | |

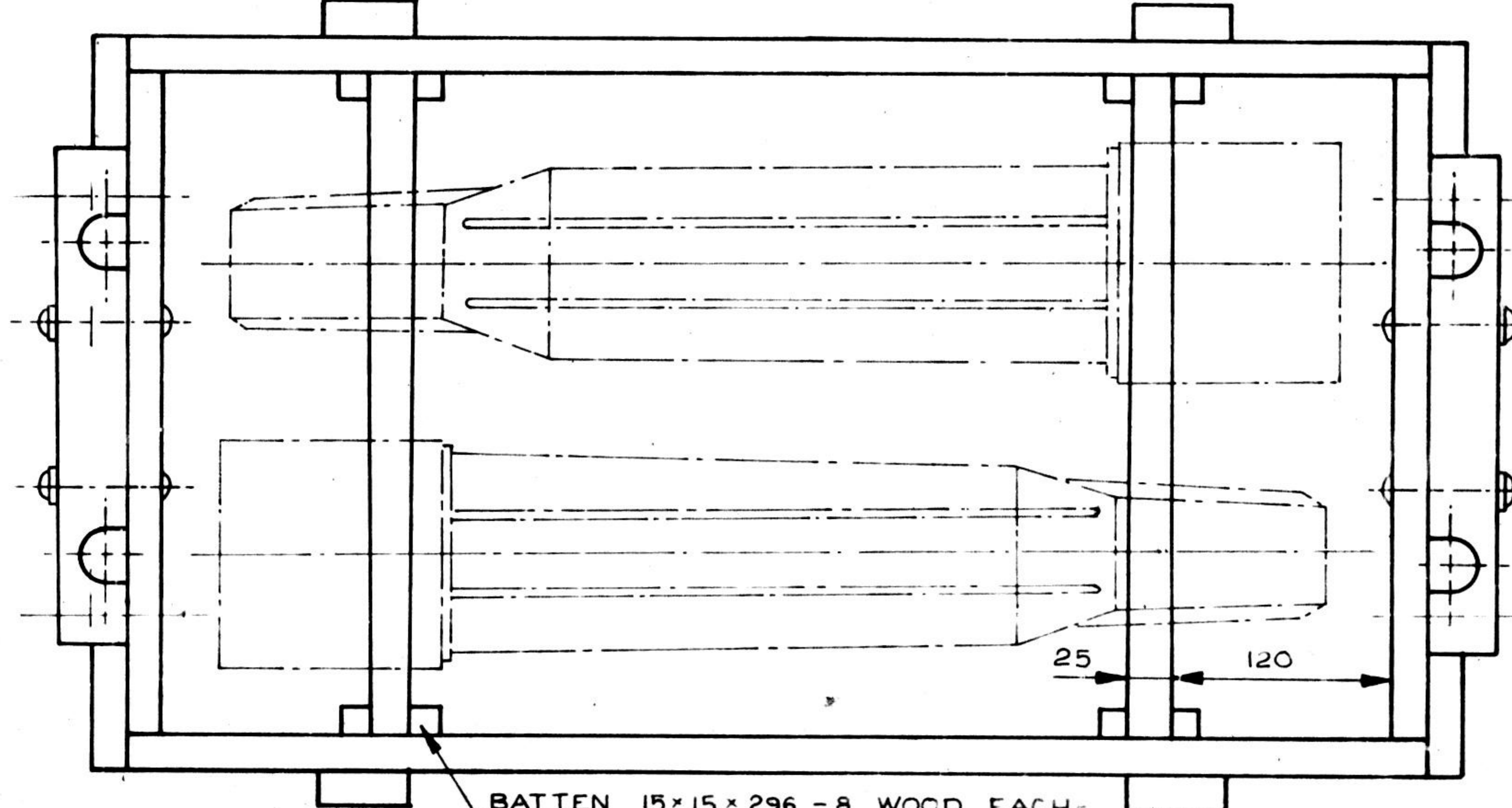
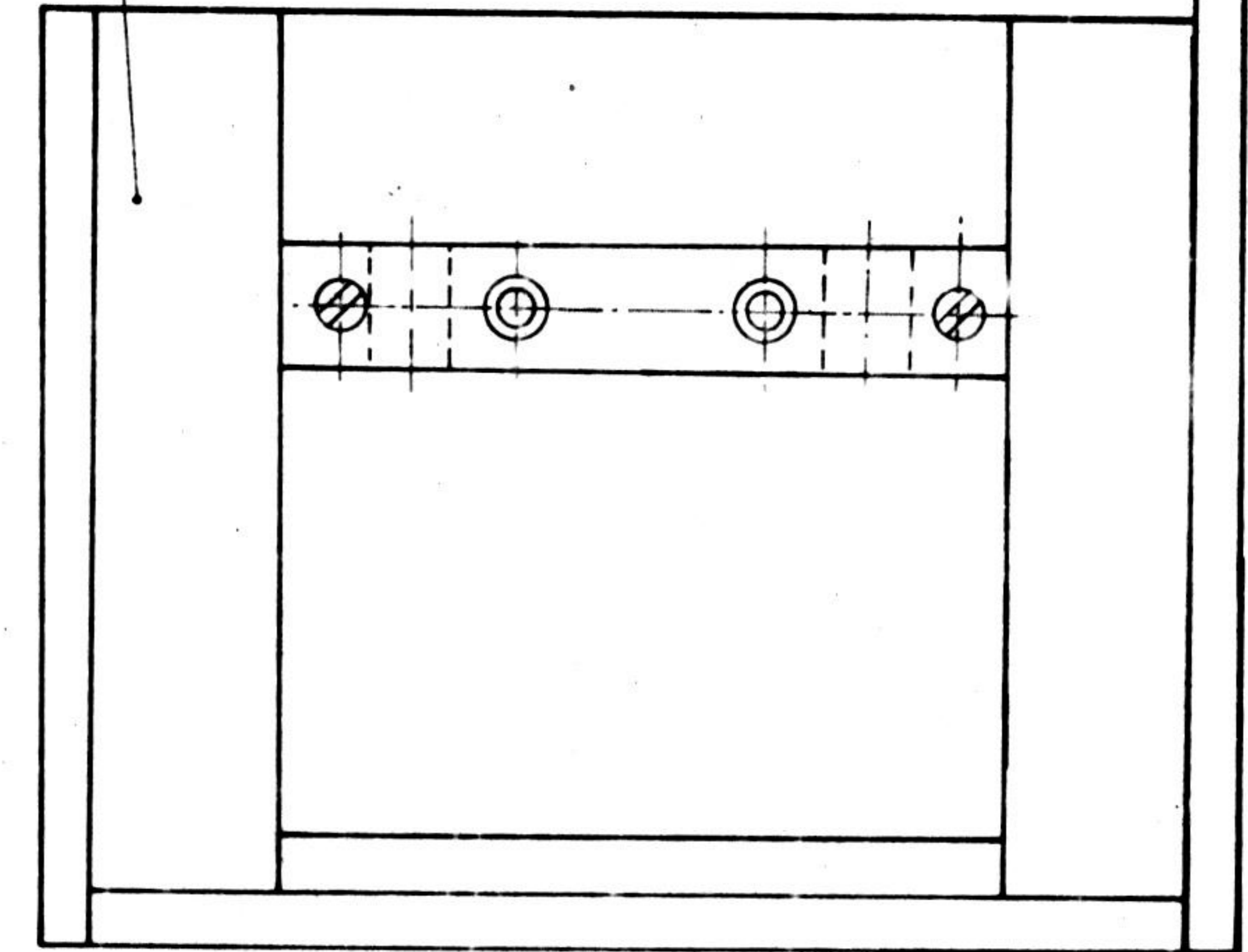
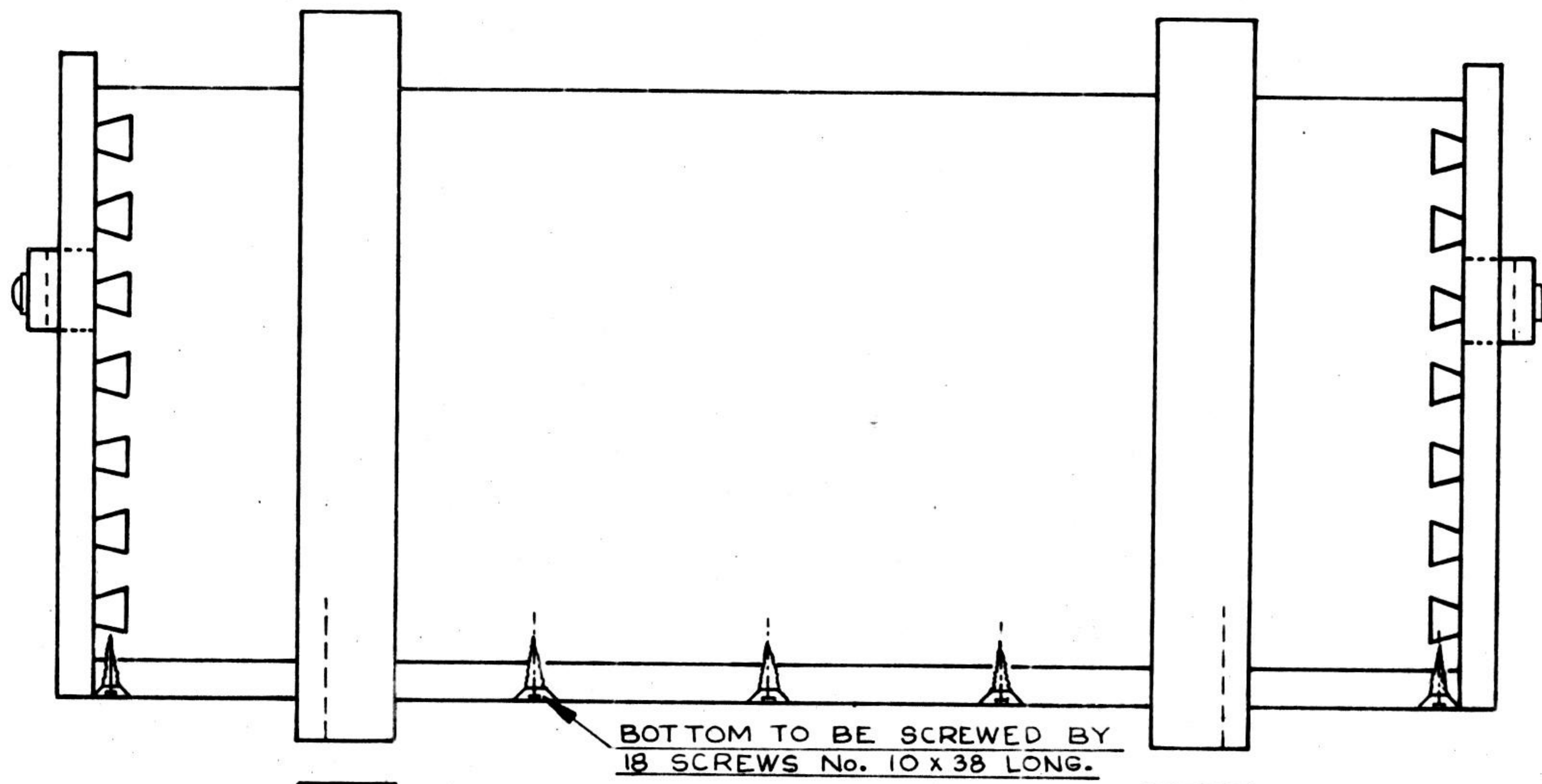
BOX TRANSIT 3A

9mm

DS. CAT. No.
8115-000749

DRG. CONVENTIONS CONFORM TO IS: 696
DIMENSIONS ARE IN m.m.

BATTEN 20x65x320 - 4 WOOD EACH TO BE
SECURED BY 14 NAILS TO IS: 723-1972



BATTEN 15x15x296 - 8 WOOD EACH -
BATTEN TO BE SECURED BY 6 SUITABLE NAILS TO SPEC. IS 723-72

NOTES:-

1. THE TRANSIT BOX TO BE PAINTED BY RED-OXIDE PRIMARY COAT AND THEN INTERNALLY & EXTERNALLY BY PAINT OLIVE GREEN SPECIFICATION No. WPN/GEN/10.
2. THE CHEST TO BE PAINTED EXTERNALLY & INTERNALLY WITH SUITABLE PAINT TO SPEC. No. WPN/GEN/10.
3. ALL BATTENS & JOINTS ARE TO BE PROPERLY FITTED.
4. ALL PLANKS TO BE JOINED WITH TOUNGED GROOVE WITH 50 m.m. BLEACHED CLOTH CALICO WITH GLUE.

| | |
|--------------|---------|
| TRACED BY | DATE |
| Checked | 26-7-94 |
| CHECKED BY | |
| V.S. Samudra | |
| DATE | |
| | |

| | |
|--------------------------|----------------------|
| 21505-CQAW-QA2 8-2-95 | DESIGNATION AMENDED. |
| 21505-CQAW-QA2 7-1-95 | PART No. ADDED. |

| DATE | AUTHORITY | ZONE | NATURE | SIG. AHSP | SIG. DO |
|----------|-------------------|------|-------------------------|-----------|---------|
| 15-9-94 | 21505-CQAW-(QA-2) | | DS. CAT. No. ADDED | | |
| 27-07-94 | | | NEW POLY-NEG. PREPARED. | | |
| | | | AMENDMENTS | | |

| | | |
|-----------------------------------|-------------|-------------------------|
| CHIEF D' MAN R. Rawat | ASSY DRG. | CQA(W) JABAL PUR |
| DO | FSTD MASS | DESIGN No. SHT 2 OF 2 |
| AHSP | DATE | CQA/WPN/1777 |
| FOR CQA (W) | SCALE:- 1:4 | PART No. SHT 2 OF 2 |
| DRG. SEALED 18352-W 25-4-97 | DRN:- KSP | ICM 2240 |
| DO CQA (W) | CHD:- D.P. | DS CAT. No. SHT 2 OF 2. |
| | | 8115-000749 |
| BOX TRANSIT 3A | | |
| WITHOUT LID. | | |

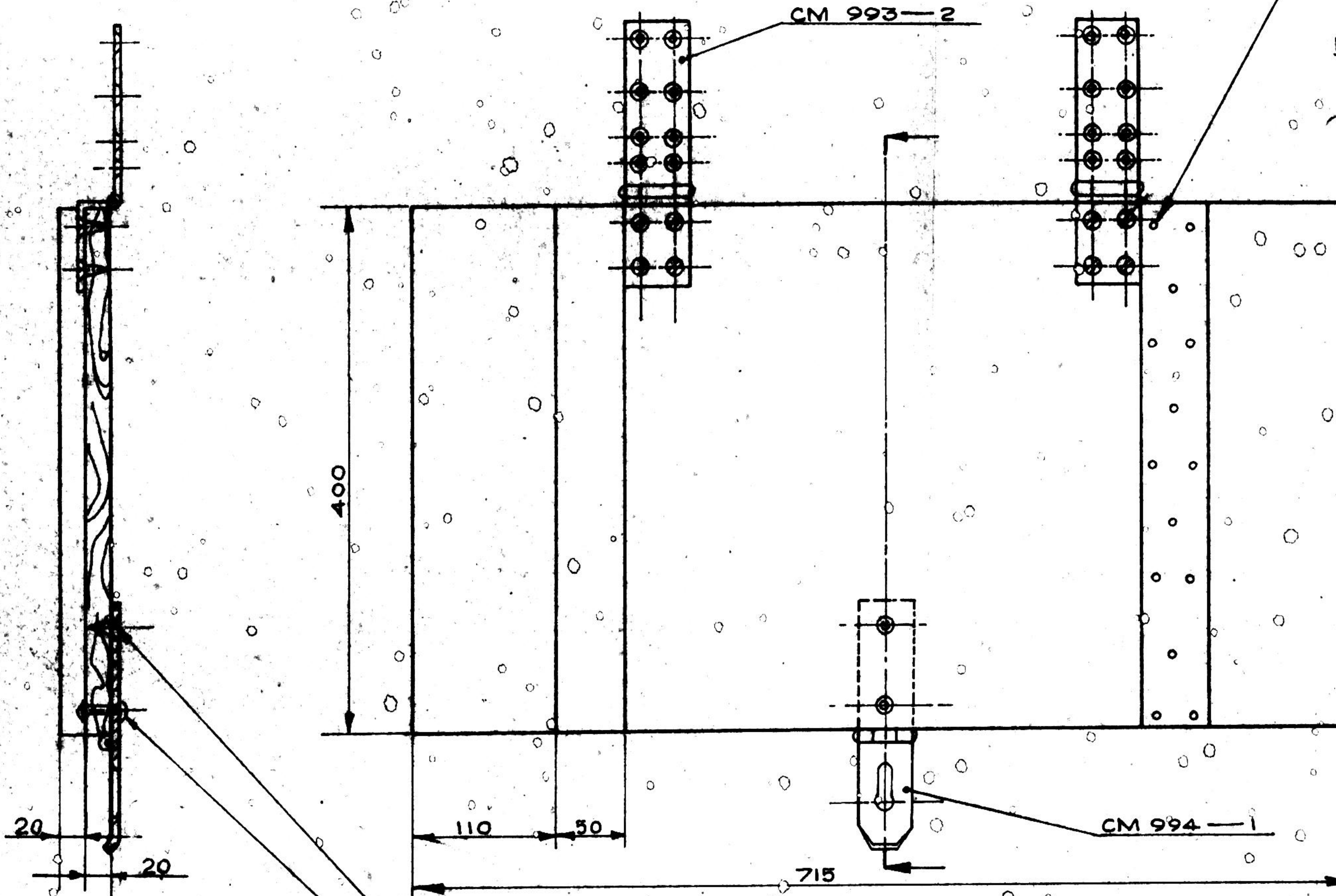
9 mm

PART NO.
ICM 2241

DRG. CONVENTIONS CONFORM TO IS: 696.
DIMENSIONS ARE IN mm.

EACH BATTEN TO BE SECURED BY 14 NAILS
GAUGE 8X38 LONG AS PER IS: 723-72

MATERIAL:-
TIMBER CLASS I OR II HIGH
DURABLE TO SPEC. IS: 6662-80
IT SHOULD BE FREE FROM DEFECTS
& ALL OTHER TECHNICAL REQUIREMENT
AS PER IS: 1503-88.



WOOD SC. NO. 12X20 LONG-1 (IS: 6760-1972)

COPPER RIVET ϕ 6.35X20 LONG
WITH SUITABLE WASHER-1 (IS: 2155-1982)

| DATE | AUTHORITY | ZONE | NATURE | SIG | SIG |
|------------|--------------------|------|------------------------|------|-----|
| | | | | AHSP | DO |
| 7.1.95 | 21505- SOAW-GA2 | | PART NO. ADDED. | | |
| 29.7.94 | | | NEW POLY NEG. PREPARED | | |
| AMENDMENTS | | | | | |

| | | |
|-------------|-------------|------------------|
| CHIEF D'MAN | ASSY DRG. | CQA (W) JABALPUR |
| AHSP | ESTD MASS | DESIGN NO. |
| EDITION | DATE: | CQA/WPN/1978 |
| DRG SEAL | SCALE: 1:2 | PART NO. |
| 18.5.2-W | DRN: - KSP. | ICM 2241 |
| 25.4.97 | CHD. D.P. | DS CAT NO. |
| DO CQA (W) | | |

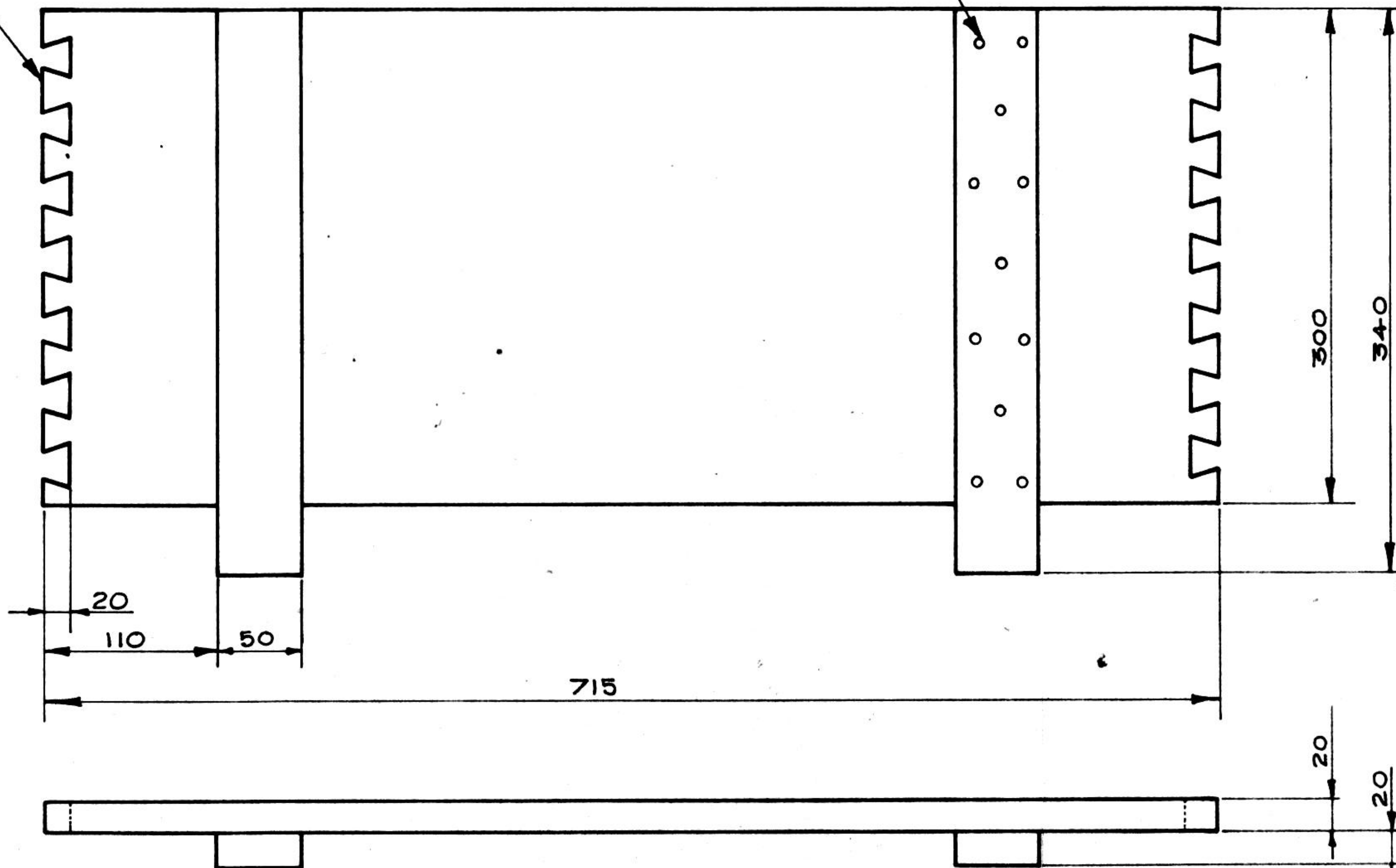
LID ASSY

TRACED BY: *[Signature]*
 CHECKED BY: *[Signature]*
 DATE: 5.8.94

PART NO. **ICM 2242** DRG. CONVENTIONS CONFORM TO IS: 696. DIMENSIONS ARE IN MM.

DOVE TAIL FOR FITTING ON BOTH ENDS TO SUIT CQA/WPN/1782

EACH BATTEN TO BE SECURED BY 11 NAILS GAUGE NO. 8X38 LONG AS PER IS: 723-72.



MATERIAL:- TIMBER CLASS II OR CLASS III HIGH DURABLE TO SPEC. IS: 6662-80.
IT SHOULD BE FREE FROM DEFECTS, & ALL OTHER TECHNICAL REQUIRMENTS
AS PER SPEC. IS: 1503-88.

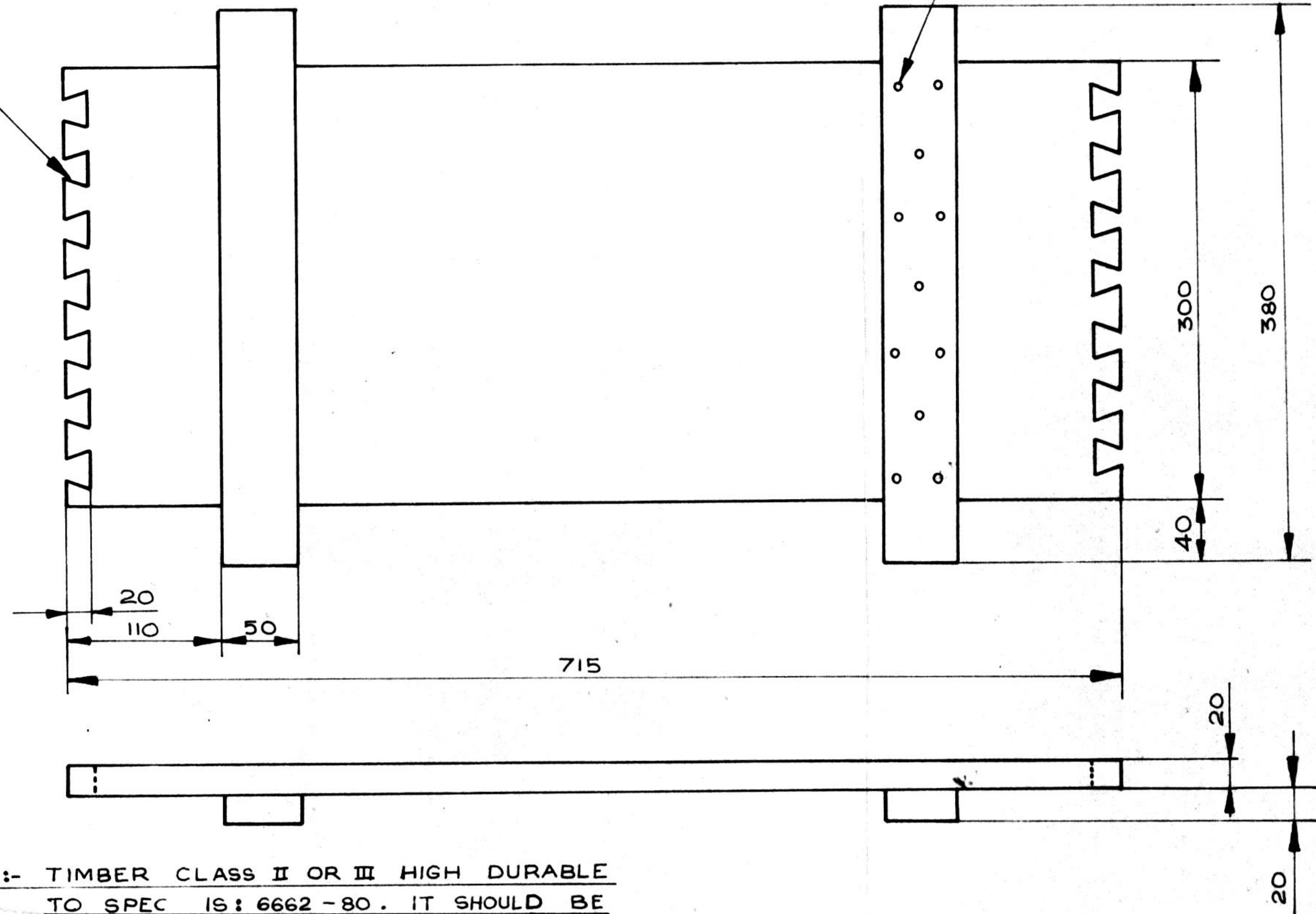
TRACED BY *S. A. Bagde.*
 CHECKED BY V. S. S.
 DATE 28-7-94

| DATE | AUTHORITY | ZONE | NATURE | SIG. AHSP | SIG. DO |
|------------|----------------|------|------------------------|-----------|---------|
| 7.1.95 | 21505-CQAW-QA2 | | PART NO. ADDED. | | |
| 28-7-94 | | | NEW POLY NEG. PREPARED | | |
| AMENDMENTS | | | | | |

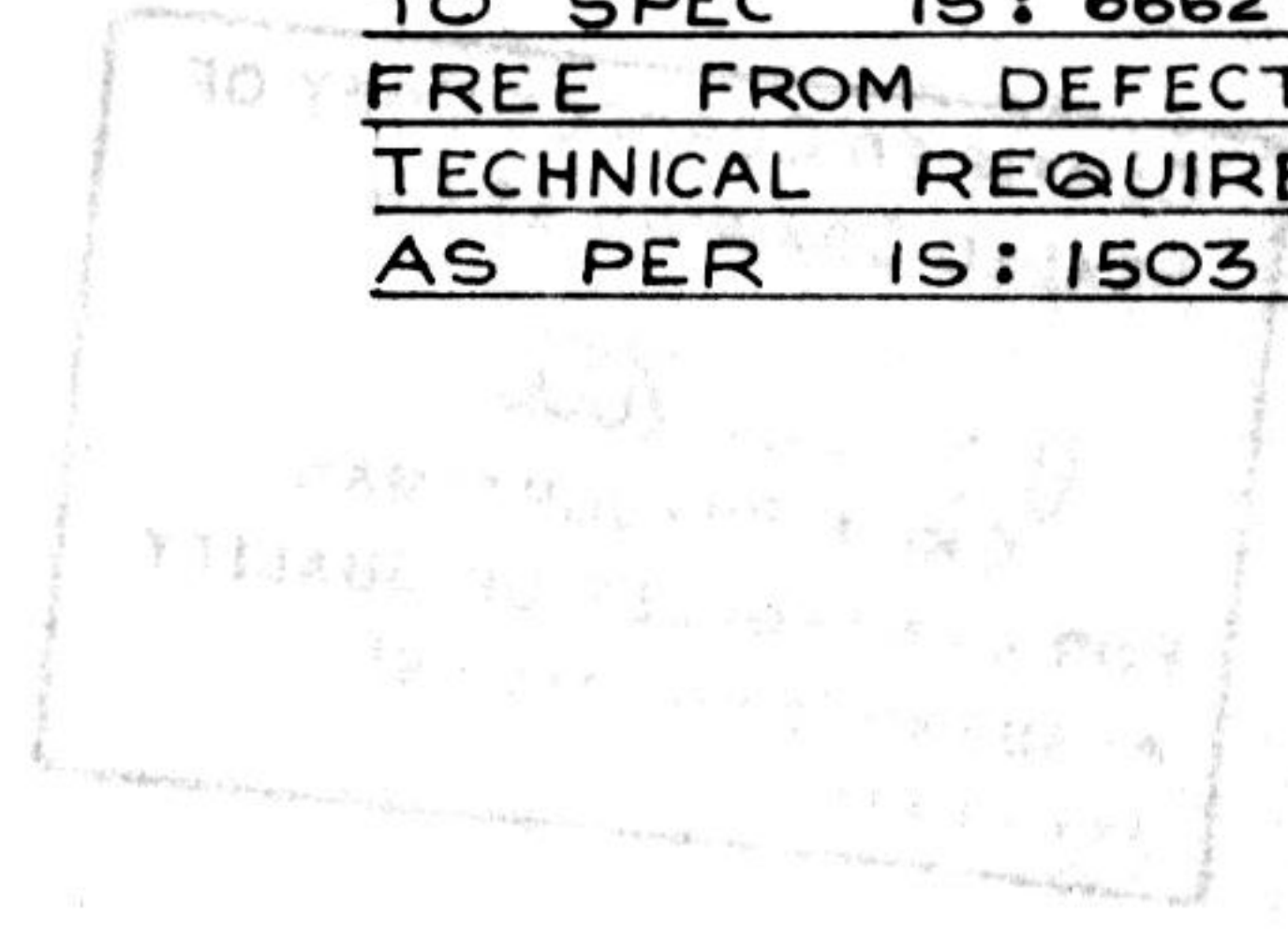
| | | |
|------------------------------|-------------|-------------------------|
| CHIEF D'MAN <i>R. Prasad</i> | ASSY DRG. | CQA (W) JABALPUR |
| DO | ESTD MASS | DESIGN NO. CQA/WPN/1779 |
| AHSP <i>[Signature]</i> | DATE: | PART NO. ICM 2242 |
| FOR CQA (W) DRG SEALED | SCALE: 1:4 | DS CAT NO. |
| 18352-W | DRN: - KSF | |
| 25-4-97 | CHD: - D.P. | |
| DO CQA (W) | | |
| REAR PLANK ASSY | | |

DOVETAIL FOR FITTING BOTH ENDS
TO SUIT CQA/WPN/1782.

EACH BATTEN TO BE SECURED BY 11 NAILS
GAUGE 8x38 LONG AS PER IS: 723-72.



MATERIAL:- TIMBER CLASS II OR III HIGH DURABLE
TO SPEC IS: 6662-80. IT SHOULD BE
FREE FROM DEFECTS & ALL OTHER
TECHNICAL REQUIREMENT SHOULD BE
AS PER IS: 1503-88.



TRACED BY: *Prakash*
 CHECKED BY: *J.S. Samudra*
 DATE: 5-8-94

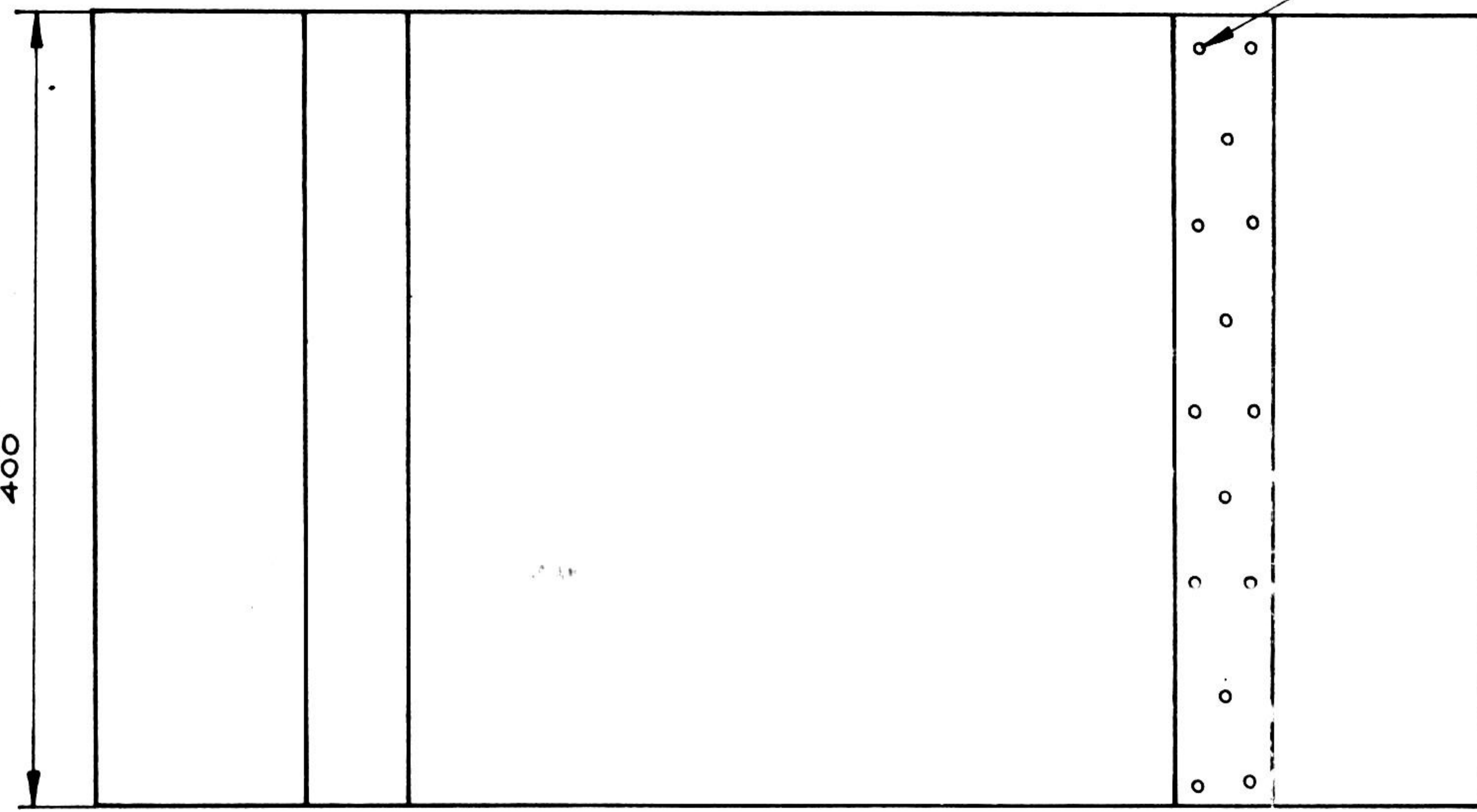
| | | | | | |
|------------|----------------|------|-------------------------|-----------|---------|
| 7.1.95 | 21505-CQAW-QA2 | | PART NO. ADDED. | | |
| 28-07-94 | | | NEW POLY-NEG. PREPARED. | | |
| DATE | AUTHORITY | ZONE | NATURE | SIG. AHSP | SIG. DO |
| AMENDMENTS | | | | | |

| | | |
|--|------------|-----------------------------|
| <i>P. Rawal</i> CHIEF D MAN | ASSY DRG. | CQA(W) JABALPUR |
| DO. | ESTD MASS. | |
| AHSP | DATE | DESIGN No. CQA/WPN/1780. |
| FOR CQA (W) DRG. SEALED 18352-W 25-4-97 | SCALE 1:4 | PART No. ICM 2243 |
| DO CQA (W) | DRN:- KSP | DS CAT No. |
| | CHD:- DP | |

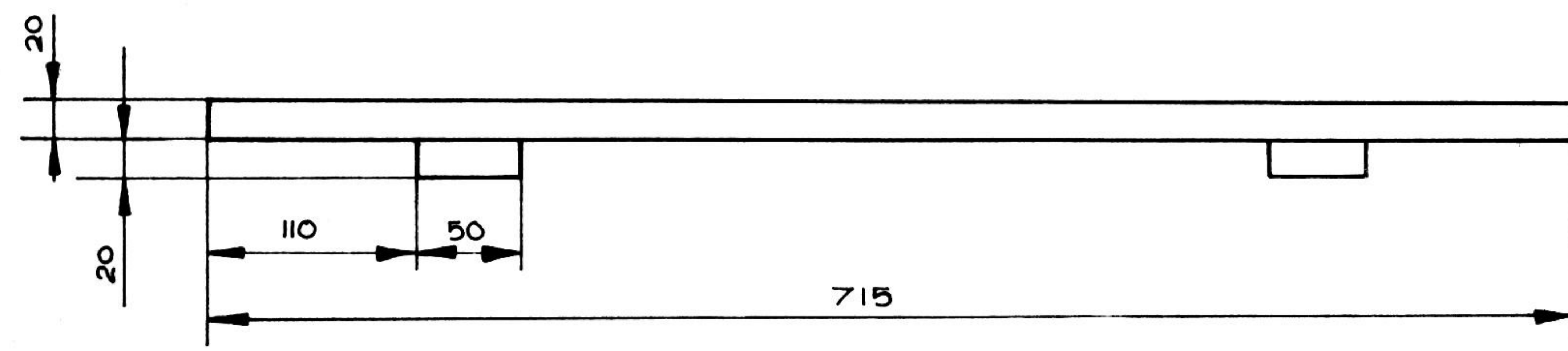
FRONT PLANK ASSY

8 7 6 5 4 3 2 1
 PART No. DRG. CONVENTIONS CONFORM TO IS:696
 ICM 2244 DIMENSIONS ARE IN m.m.

EACH BATTEN TO BE SECURED BY 14 NAILS
 GAUGE No.8 x 38 LONG TO IS:723-72



MATERIAL:- TIMBER CLASS II OR CLASS III. HIGH
 DURABLE TO IS:6662:80. IT SHOULD
 BE FREE FROM DEFECT & ALL OTHER
 TECHNICAL REQUIRMENTS AS PER IS:1503-88.



TRACED BY
 J.S. Samudra
 6-8-94

| DATE | AUTHORITY | ZONE | NATURE | SIG. AHSP | SIG. DO |
|------------|----------------|------|-----------------------|-----------|---------|
| 7.1.95 | 21505-CQAW-QA2 | | PART NO. ADDED | | |
| 26-07-94 | | | NEW POLY-NEG. PRPARED | | |
| AMENDMENTS | | | | | |

| | | |
|---------------------------------|------------|----------------------------|
| CHIEF D' MAN <i>R. Rawal</i> | ASSY DRG. | CQA(W)JABALPUR |
| AHSP <i>J.S. Samudra</i> | ESTD MASS | |
| FOR CQA(W) | DATE | DESIGN No. CQA/WPN/1781 |
| DRG. SEALED 18352-W | SCALE:-1:4 | PART No. ICM 2244 |
| 25-4-97 | DRN:- KSP | DS CAT No. |
| DOCQA(W) | CHD:- D.P | |
| BOTTOM PLANK ASSY | | |

