

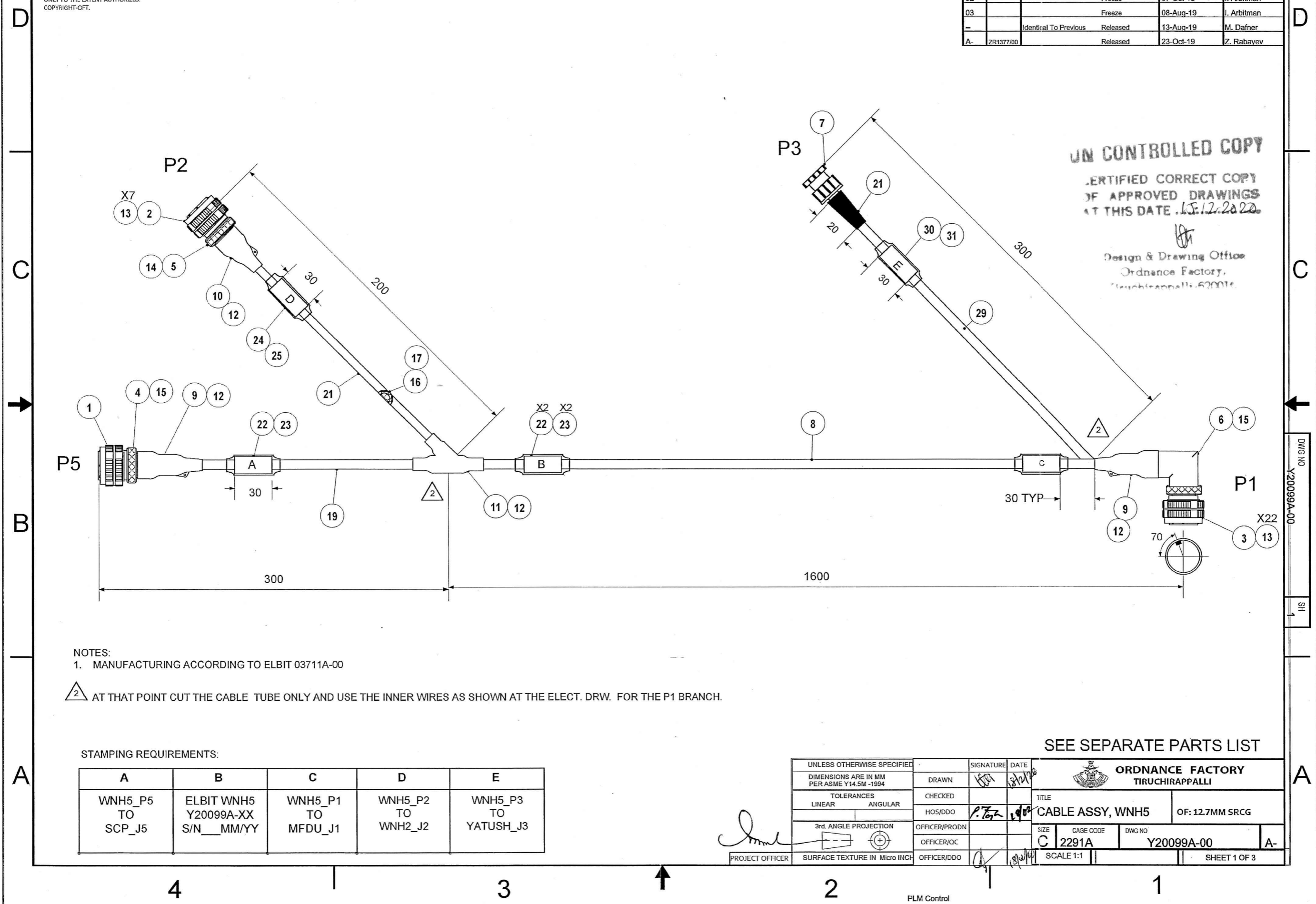
42256

14512000

THIS DOCUMENT AND THE INFORMATION CONTAINED IN IT ARE PROPRIETARY AND CONFIDENTIAL TO OFT. NO PERSON OR ENTITY IS ALLOWED TO COPY, REPRINT, REPRODUCE OR PUBLISH ANY PART OF THIS DOCUMENT, NOR DISCLOSE ITS CONTENTS TO OTHERS, NOR MAKE ANY USE OF IT, NOR ALLOW OR ASSIST OTHERS TO MAKE ANY USE OF IT UNLESS BY THE PRIOR WRITTEN EXPRESS AUTHORIZATION OF OFT AND THEN ONLY TO THE EXTENT AUTHORIZED.
COPYRIGHT-OFT.

SHEET REV STATUS
ALL SHEETS ARE THE SAME REVISION

REVISION RECORD					
REV	ECO	DESCRIPTION	DATE	APVD	
01		Freeze	10-Jan-18	I. Arbitman	
02		Freeze	07-Oct-18	I. Arbitman	
03		Freeze	08-Aug-19	I. Arbitman	
-		Identical To Previous	Released	13-Aug-19	M. Dafner
A-	ZR1377/00	Released	23-Oct-19	Z. Rabavev	



UN CONTROLLED COPY
CERTIFIED CORRECT COPY
OF APPROVED DRAWINGS
AT THIS DATE 15.12.2022
Design & Drawing Office
Ordnance Factory,
Tiruchirappalli-620016.

NOTES:
1. MANUFACTURING ACCORDING TO ELBIT 03711A-00
2. AT THAT POINT CUT THE CABLE TUBE ONLY AND USE THE INNER WIRES AS SHOWN AT THE ELECT. DRW. FOR THE P1 BRANCH.

STAMPING REQUIREMENTS:

A	B	C	D	E
WNH5_P5 TO SCP_J5	ELBIT WNH5 Y20099A-XX S/N__MM/YY	WNH5_P1 TO MFDU_J1	WNH5_P2 TO WNH2_J2	WNH5_P3 TO YATUSH_J3

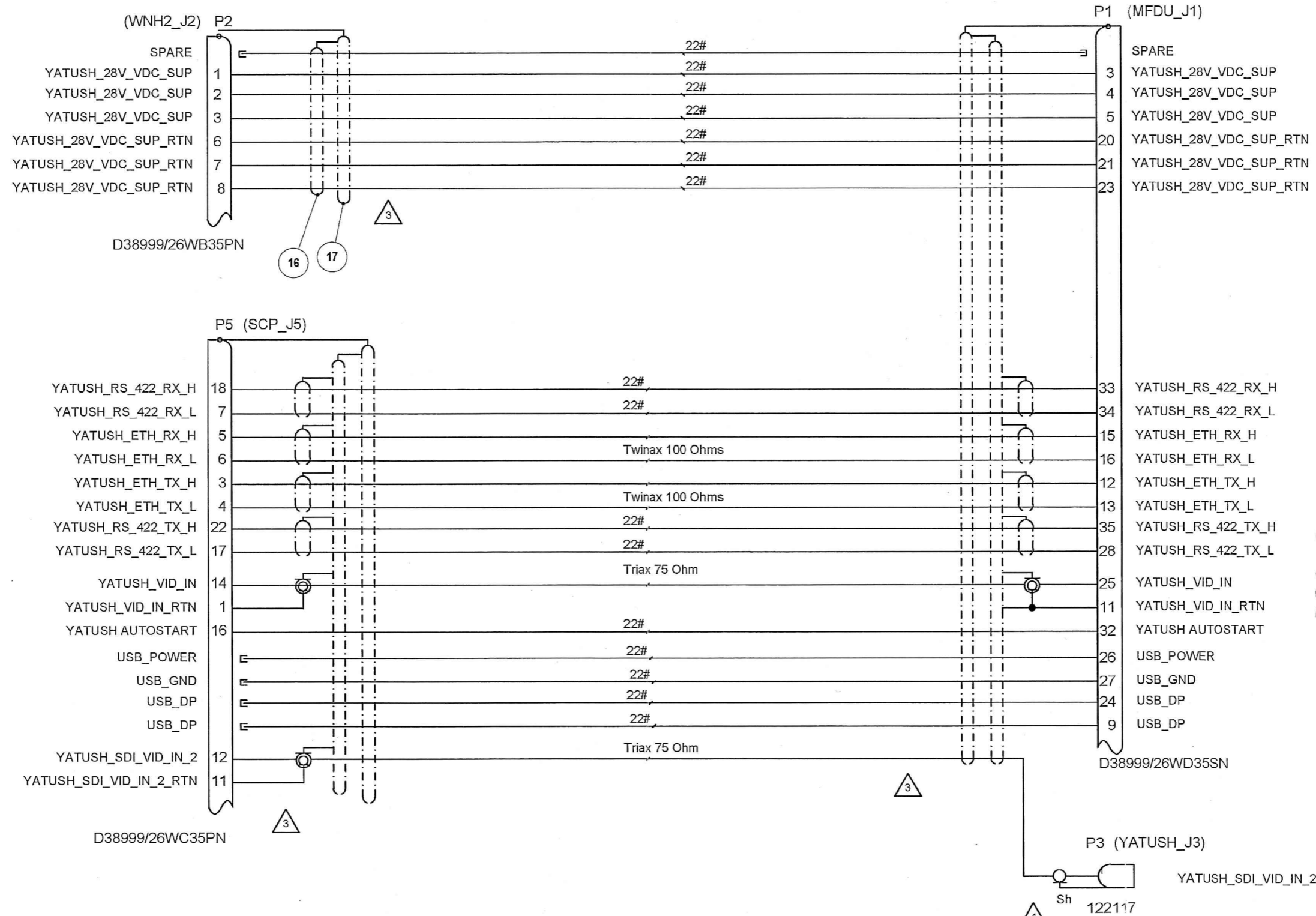
SEE SEPARATE PARTS LIST

UNLESS OTHERWISE SPECIFIED		SIGNATURE	DATE	ORDNANCE FACTORY TIRUCHIRAPPALLI	
DIMENSIONS ARE IN MM PER ASME Y14.5M-1994		DRAWN		TITLE CABLE ASSY, WNH5	
TOLERANCES LINEAR ANGULAR		CHECKED		OF: 12.7MM SRCG	
3rd ANGLE PROJECTION		HOS/DDO		SIZE C	CAGE CODE 2291A
SURFACE TEXTURE IN Micro INCH		OFFICER/PRODN		DWG NO Y20099A-00	A-
		OFFICER/OC		SCALE 1:1	SHEET 1 OF 3
		OFFICER/DDO			

DWG NO Y20099A-00
SH 1

THIS DOCUMENT AND THE INFORMATION CONTAINED IN IT ARE PROPRIETARY AND CONFIDENTIAL TO OFT. NO PERSON OR ENTITY IS ALLOWED TO COPY, REPRINT, REPRODUCE OR PUBLISH ANY PART OF THIS DOCUMENT, NOR DISCLOSE ITS CONTENTS TO OTHERS, NOR MAKE ANY USE OF IT, NOR ALLOW OR ASSIST OTHERS TO MAKE ANY USE OF IT UNLESS BY THE PRIOR WRITTEN EXPRESS AUTHORIZATION OF OFT AND THEN ONLY TO THE EXTENT AUTHORIZED.
COPYRIGHT-OFT.

WNH5



△3 FOR WIRE CROSS SECTION AND COMPONENT IDENTIFICATION SEE SHEET NO.3.

△4 USE INNER SHIELD ONLY.

UN CONTROLLED COPY

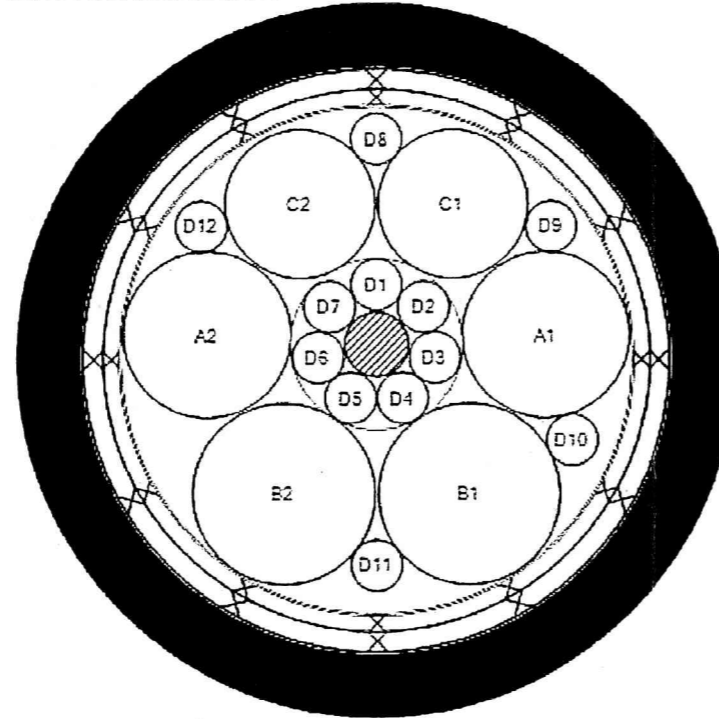
CERTIFIED CORRECT COPY OF APPROVED DRAWINGS AT THIS DATE 15/12/2022

Design & Drawing Office
Ordnance Factory,
Tiruchirappalli-620016

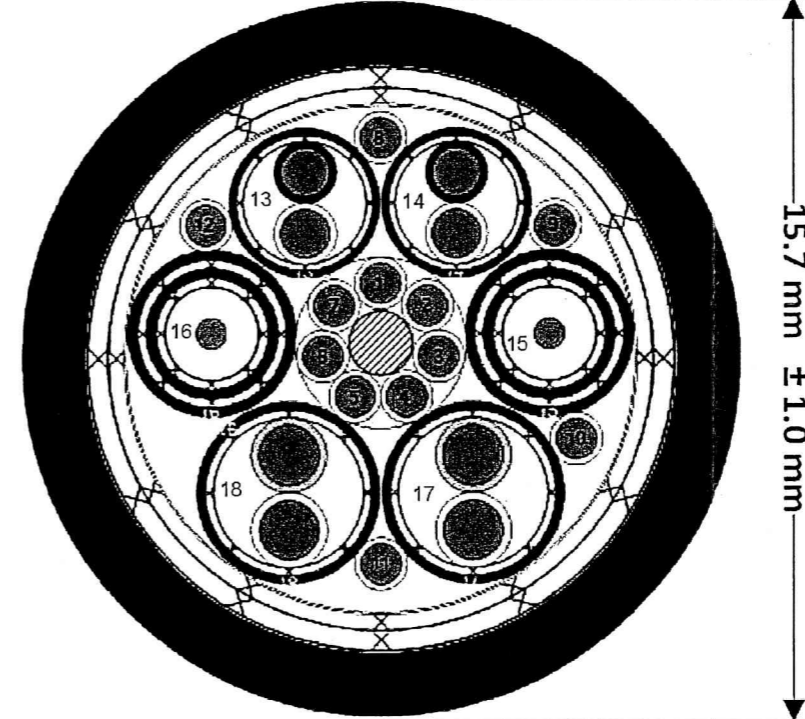
SIZE C	CAGE CODE 2291A	DWG NO Y20099A-00	REV A-
SCALE 1:1		SHEET 2 OF 3	

THIS DOCUMENT AND THE INFORMATION CONTAINED IN IT ARE PROPRIETARY AND CONFIDENTIAL TO OFT. NO PERSON OR ENTITY IS ALLOWED TO COPY, REPRINT, REPRODUCE OR PUBLISH ANY PART OF THIS DOCUMENT, NOR DISCLOSE ITS CONTENTS TO OTHERS, NOR MAKE ANY USE OF IT, NOR ALLOW OR ASSIST OTHERS TO MAKE ANY USE OF IT UNLESS BY THE PRIOR WRITTEN EXPRESS AUTHORIZATION OF OFT AND THEN ONLY TO THE EXTENT AUTHORIZED.
 COPYRIGHT-OFT.

Component Identification



Cross-Section



Components

ID	Type	Quantity	Part Description
A	Triax	2	75 Ohm, 30AWG Triax, Zero-Halogen
B	Twinax	2	100 Ohm, 24AWG Twinax, Zero-Halogen 0024K1811-0
C	Cable	2	99M1121-22-0/9-9
D	Wire	12	99M0111-22-9

Outer

Layer Type	Description	Nom. O.D. [mm]
Wrap:	Polyester	11.2
Shield 1:	Optimised Braid – Tin Plated Copper	11.9
Shield 2:	Optimised Braid – Tin Plated Copper	12.8
Wrap:	Polyester	12.9
Outer Jacket: Extrusion 1	Zero-Halogen Black	15.7 ± 1.0

UN CONTROLLED COPY
 CERTIFIED CORRECT COPY
 OF APPROVED DRAWINGS
 AT THIS DATE 15.12.2020

Design & Drawing Office
 Ordnance Factory,
 Truchiraspaoli-620016

SIZE C	CAGE CODE 2291A	DWG NO Y20099A-00	REV A-
SCALE 1:1		SHEET 3 OF 3	

OFT

ASSEMBLY PARTS LIST

Assembly Parts List For: Y20099A-00

Rev: A-

Status: Released

Description: CABLE ASSY, WNH5

FN	CMD	PART NUM	ECO	DESCRIPTION	MB	QTY	UWM	REF. DES./REMARKS	MFG. PN / CUSTOMER	LA	LI
1	PO	20203374877 (99621189M)		PLUG CIRC 22 P NO.13	P	1	Each	P5	46429-D38999/26WC35PN		
2	PO	20203374100 (99933385M)		PLUG CIRC 13P NO.11	P	1	Each	P2	46429-D38999/26WB35PN		
3	PO	99622499M		PLUG CIRC 37 S NO. 15	P	1	Each	P1	46429-D38999/26WD35SN		
4	PO	00017315N		BACKSHELL CONN #13 38999-3,4 1	P	1	Each	BS P5	45147-24740S12080455		
5	PO	00041885N		BACKSHELL CONN #11 38999-3,4 1	P	1	Each	BS P2	45147-24740S10040455		
6	PO	00034733N		BACKSHELL CONN #15 38999-3,4 R	P	1	Each	BS P1	47017-440HJ030NF1504		
7	PO	00139696N		PLUG COAX TNC STR CRIM RG179	P	1	Each	P3	44706-122117		
8	WO	00162207N		EPD LFH CABLE - 22 CONDUCTOR	P	2.500	MR		22050-RQI1702080		
9	VW	20008550L		BOOT,CONN,STRAIGHT (55MMLG)	P	2	Each		58034-202K132-100		
10	VW	20008549L		BOOT SHRINK STR .92 TO .41	P	1	Each		58034-202K121-100		
11	VW	00159194N		BOOT SHRINK 45DEG TRANSITION	P	1	Each		55386-342A024-100		
12	YR	00003356N		ADHESIVE EPOXY POLYAMID KIT FO	P	30.000	GM		20012-S1125 KIT-8		
13	PO	40332039977 (99930390M)		PLUG GROMMET SEALING NO.22	P	29	Each	PLUG GROMMET P1,PLUG GROMMET P2	58312-MS27488-22-1		
14	PO	00015525N		BAND CLAMP ID.8 W.120 F/BCKSHL	P	1	Each	BAND P2	47017-600-057-1		
15	PO	99982350M		BAND CLAMP ID1.8 W.24 F/BACKSHEL	P	2	Each	BAND P1,P5	47017-600-052		
16	VW	40687009977 (99929867M)		BRAID TUBE .125ID CU/TIN(.187X	P	0.300	MR		54148-A-A-59569R36T0125		
17	VW	00042060N		BRAID TUBE .171ID CU/TIN(.2DDX	P	0.300	MR		41149-A-A-59569R36T0171		
19	VW	00108388N		TUBING,HT-SHR,L-SMOKE 18/9	P	30.000	CM		58034-ZHTM-18/9-0		
21	VW	00108387N		TUBING,HT-SHR,L-SMOKE 8/4	P	22.000	CM		58034-ZHTM-8/4-0		
22	VW	00158728N		ZH MARKER SLEEVE 3/4DIA WHT	P	3	Each		55386-HX-SCE-1K-19.0-50-9		
23	VW	99941582M		TUBE SHRINK .750/.375 CLR F.R.	P	0.190	MR		58011-M23053/18-209-C		
24	WO	00158737N		ZH MARKER SLEEVE 3/8DIA WHT	P	1	Each		55386-HX-SCE-1K-9.5-50-9		
25	VW	99941580M		TUBE SHRINK .375/.187 CLR F.R.	P	0.050	MR		58034-M23053/18-207-C		
27	VW	25553024M		COAX TERMINATION 24AWG F/RG196	P	4	Each		58249-D-181-3224-90/9		
28	YR	22016520877 (99620607M)		TAPE ELECT. TEFLON 0.5IN WIDE	P	39.370	IN		53011-60-0.5IN WIDTH		
29	VW	00108386N		TUBING,HT-SHR,L-SMOKE 5/2.5	P	32.000	CM		58034-ZHTM-5/2.5-0		
30	VW	00158744N		ZH MARKER SLEEVE 3/16DIA WHT	P	1	Each		55386-HX-SCE-1K-4.8-50-9		
31	VW	40687009299 (99941578M)		TUBE SHRINK .187/.093 CLR F.R.	P	0.050	MR		20012-M23053/18-205-C		

UN CONTROLLED COPY

CERTIFIED CORRECT COPY
OF APPROVED DRAWINGS
AT THIS DATE .15.12.2020

ftt
Design & Drawing Office
Ordnance Factory.