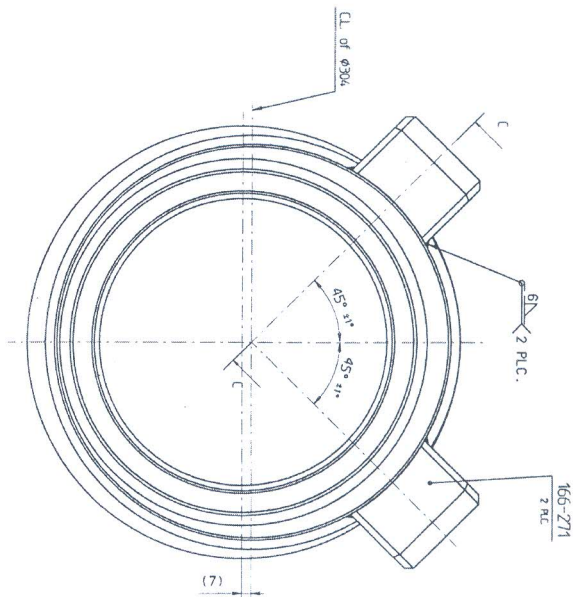
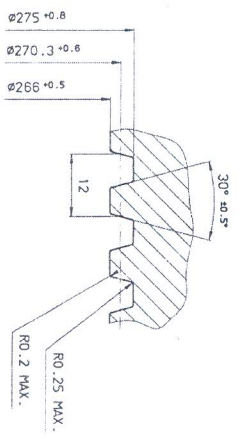




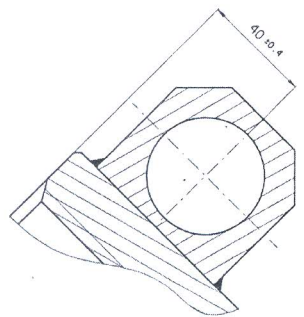
OFB  
 OIL FIELD BUREAU  
 100, 101, 102, 103, 104, 105, 106, 107, 108, 109, 110, 111, 112, 113, 114, 115, 116, 117, 118, 119, 120, 121, 122, 123, 124, 125, 126, 127, 128, 129, 130, 131, 132, 133, 134, 135, 136, 137, 138, 139, 140, 141, 142, 143, 144, 145, 146, 147, 148, 149, 150, 151, 152, 153, 154, 155, 156, 157, 158, 159, 160, 161, 162, 163, 164, 165, 166, 167, 168, 169, 170, 171, 172, 173, 174, 175, 176, 177, 178, 179, 180, 181, 182, 183, 184, 185, 186, 187, 188, 189, 190, 191, 192, 193, 194, 195, 196, 197, 198, 199, 200



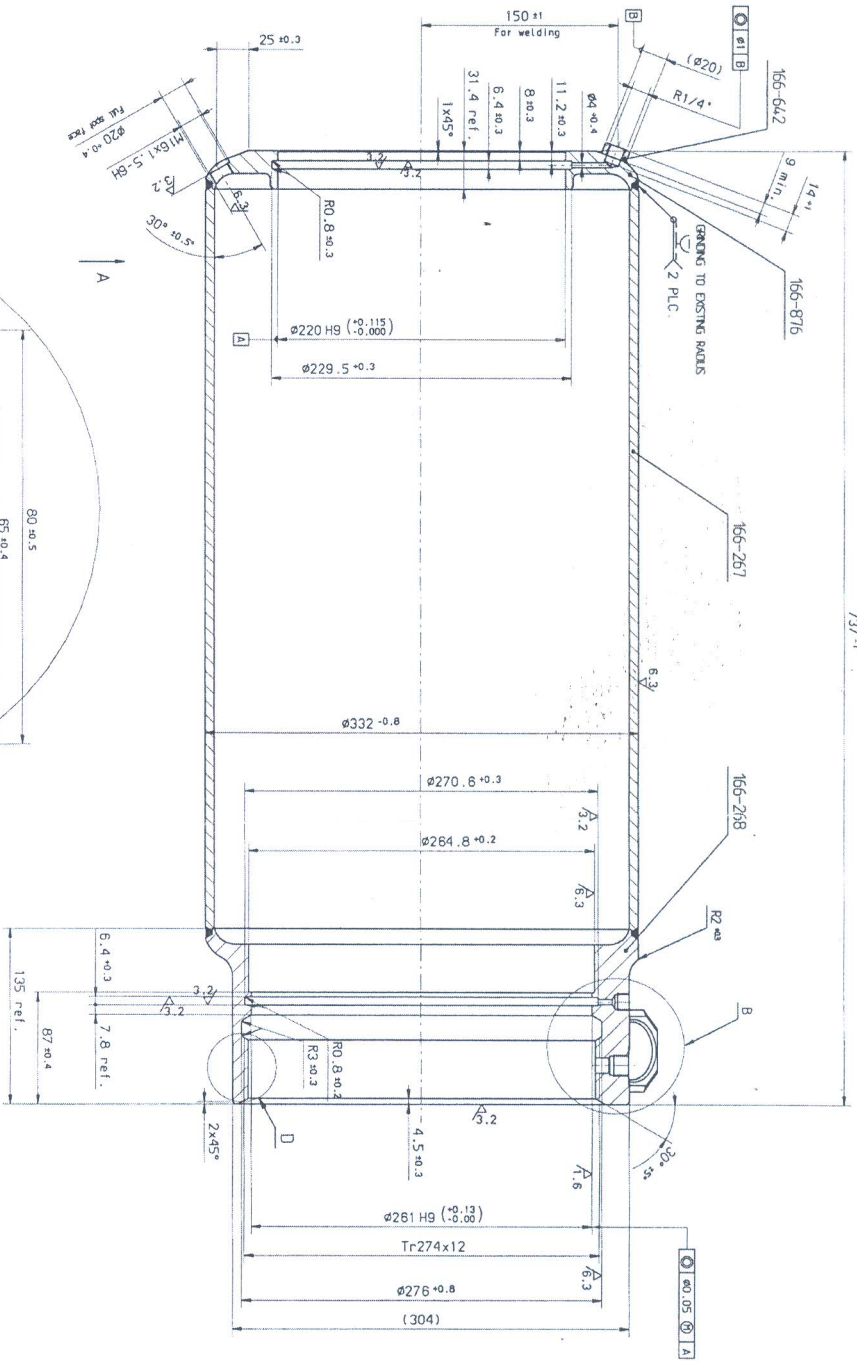
ಕೆ.ವಿ. ಪಿ.ವಿ.ವಿ. ಲೆಕ್ಕ  
 ಸಂಖ್ಯೆ 380096  
 ದಿನಾಂಕ 16-04-2018



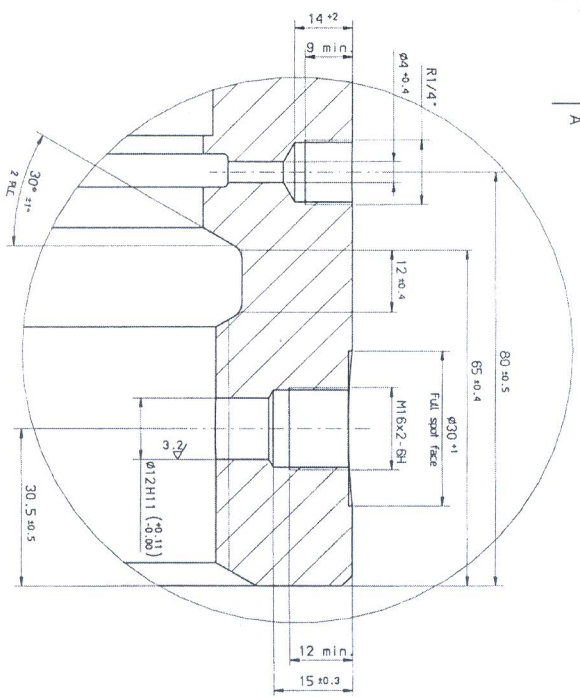
DETAIL D  
SCALE 2:1



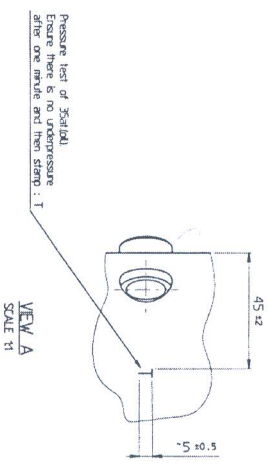
SECTION C-C  
SCALE 1:1



737-1



DETAIL B  
SCALE 2:1



VIEW A  
SCALE 1:1

ID No. 1900 Revision 01/04/18 COA (W), JABALPUR	DRAWING SIGNED DATE 22-4-2018 COA (W), JABALPUR
SHARANG 130/155MM UG OFB 51B ASSEMBLY TKS-1002 RINE EXTRACTOR SUB ASSEMBLY	DATE 22-4-2018 COA (W), JABALPUR

12-W  
Dt: 27-5-2005

DRAWING SEALED

DO  
CQA(W)

19165-W  
28-8-09

INDIG. MATL. ADDED.

D.O

CQA (W), JABALPUR

27.2.06

SCANNED & PRINTED WITHOUT CHANGE

Checked  
CHECKED



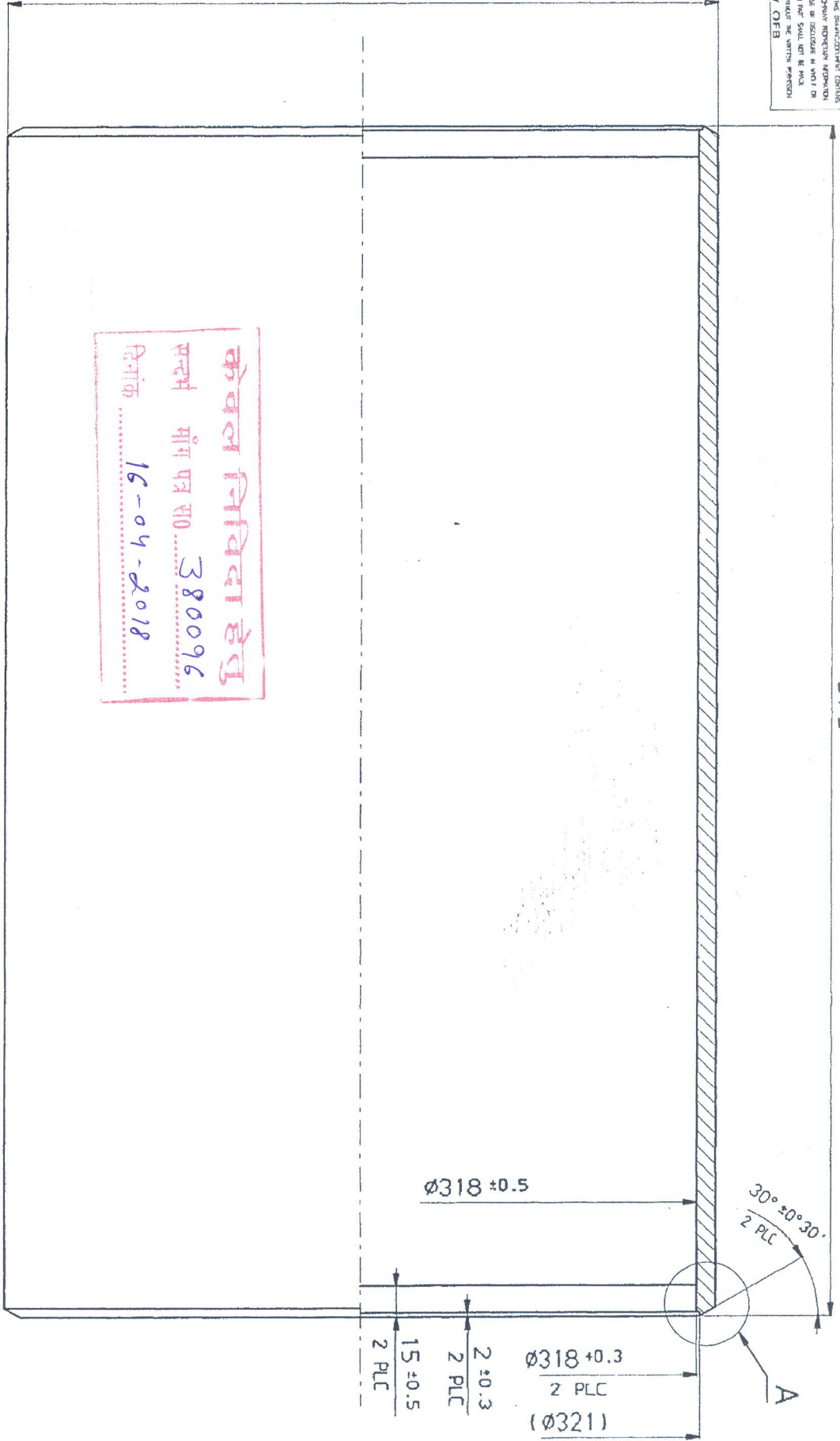
OFB



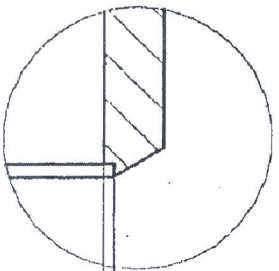
THE SUBMITTER'S DRAWING  
IS TO BE EXAMINED IN VIEW OF  
THE DRAWING SHALL NOT BE MADE  
WITHOUT THE WRITTEN PERMISSION  
OF OFB

ID = 1896  
01-04-01

Ø336 - 1



केवल निविदा हेतु  
संख्या सं० प्र प्र १० ३८००९६  
दिनांक १६-०५-२०१८



DETAIL A  
SCALE 1:1

(Ø318)

Ø321 ± 0.3

6.3

MACHINING INSTRUCTIONS

INSPECTED TOLERANCES  
FOR DIMENSIONS AND ANGLES

HEAT TREATMENT

FINISH

MATERIAL

L-585  
PPE OD 355 6x25 DIN-2448 SI 52-3

-INDIG. MATL:- BS:6323 Pt.4-82 DESIG. CFS-5.

SHARANG 130/155MM\_UG\_OFB\_SIB  
PART NO  
UPDATED  
Sh 1  
of 1

ASSEMBLY 166-875 (176-1002)  
SCALE  
A3

PIPE

NAME

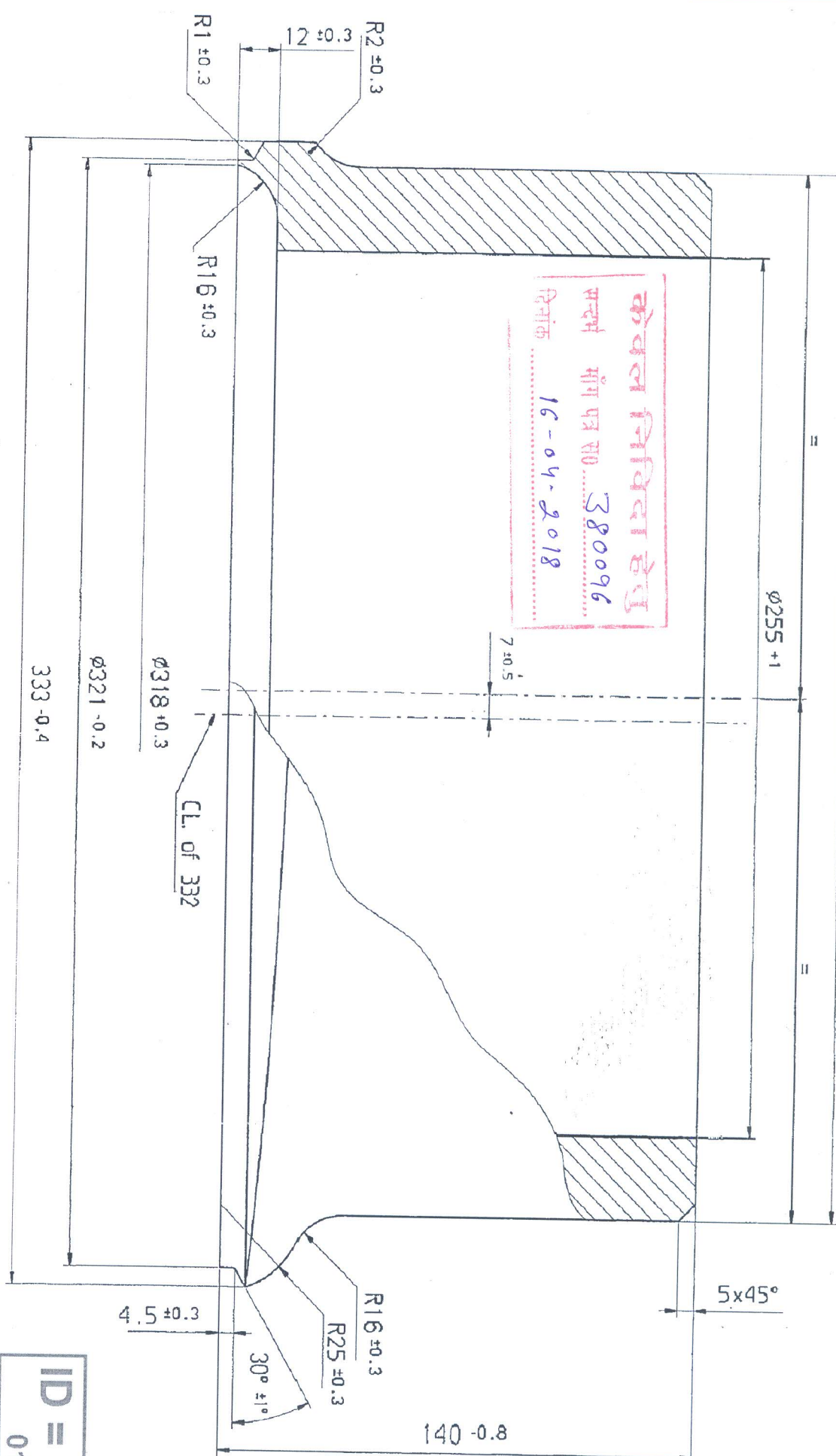
ENTERED	DATE
CHKD	DATE
APPROVED	DATE
DO/DO	DIR/DIR
OR	OR
DEVELOPMENT CENTRE,	OFF. KANPUR

PART NO 166-267

575 - 1



Ø304 -1



केवला निविदा हेतु  
 सप्तम भाग परा सं० 380096  
 दिनांक 16-04-2018

**ID = 1897**  
 01-04-01

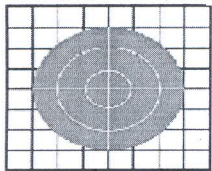
INDIG.MATL :- BS: 970 Pt-1-83 Gd 080 M30 COLD ROLLED

19165-W	INDIG.MATL.ADDED.	6.3 V
28-B-09		

MATERIAL	PIPE Ø340x47.5-s152-3
FINISH	L=1/47
HEAT TREATMENT	
MACHINING INSTRUCTIONS	REFER TO BRACKETS DIMENSIONS AND ANGLES

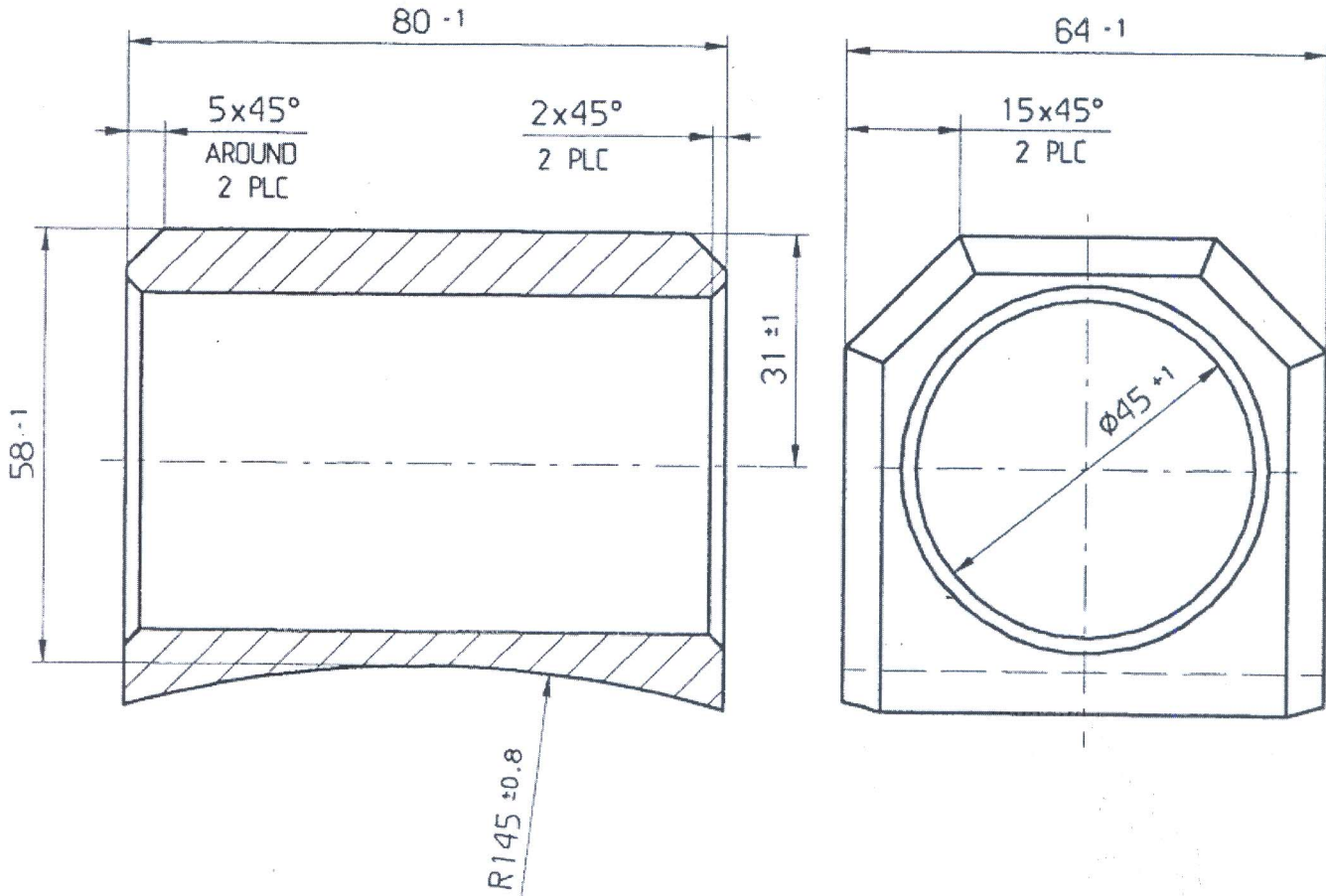
PART NO.	SHARANG 130/155MAN.US.Ø8.S18
ASSEMBLY	166-875 (176-1002)
MAKE	ADAPTER

1897-2-W	DRAWING SEALED
DL27-5-2005	NOV/05
COA (W), JABALPUR	COA/W
DATE	01-04-01
DESIGNED BY	DAVIDO DINGODG
CHECKED BY	
APPROVED BY	
DEVELOPMENT CENTRE	
PART NO.	166-268



**OFB**

THIS DRAWING/DOCUMENT CONTAINS  
 COMPANY PROPRIETARY INFORMATION.  
 USE OR DISCLOSURE IN WHOLE OR  
 IN PART SHALL NOT BE MADE  
 WITHOUT THE WRITTEN PERMISSION  
 OF OFB



केवल निविदा हेतु  
 संदर्भ सांग पत्र सं० 380096  
 दिनांक 16-04-2018

DATE: 01.01.2007  
 ALTERNATE/ INDIGENOUS MATERIAL SPCN:  
 BS:970 Pt-I:83 GDE 150 M19  
 (REF: CQA(W) JABALPUR LNo. 3B2402/CQAW/011.  
 Dt. 12 JULY 2005)

6.3/

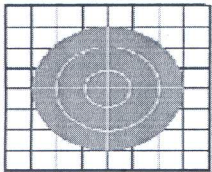
LD No. 1898  
 01/04/01

18912-W  
 Dt. 27-5-2005  
 DRAWING SEALED  
 CQA (W), JABALPUR

MACHINING INSTRUCTIONS  
 UNSPECIFIED TOLERANCES  
 FOR DIMENSIONS AND ANGLES  
 DIMENSIONS  
 ANGLES  
 HEAT TREATMENT  
 FINISH  
 MATERIAL L=85  
 Square 65 DIN 1014-st.52-3

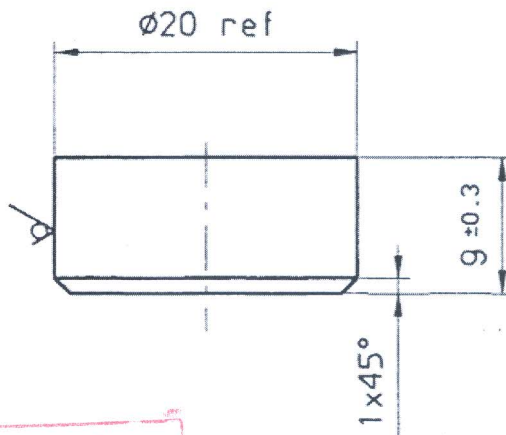
SHARANG 130/155MM\_UG\_OFB\_SLB  
 PART NO.  
 ASSEMBLY 166-875 (176-1002)  
 LUG  
 NAME

UPDATED  
 Sh: 1  
 of: 1  
 1:1 A4  
 SCALE SIZE  
 PREP'D  
 CHD  
 JWM/DO  
 APPROVED  
 DO/DO DIR/ODG  
 ORDNANCE  
 DEVELOPMENT CENTRE,  
 OFC, KANPUR  
 PART NO.  
 166-271



**OFB**

THIS DRAWING/DOCUMENT CONTAINS  
COMPANY PROPRIETARY INFORMATION  
USE OR DISCLOSURE IN WHOLE OR  
IN PART SHALL NOT BE MADE  
WITHOUT THE WRITTEN PERMISSION  
OF OFB



केवल निविदा हेतु  
सन्दर्भ मांग पत्र सं० 380096  
दिनांक 16-04-2018

I.D. No. 1899  
Location 01/04/01

DATE: 01.01.2007

ALTERNATE/INDIGENOUS MATERIAL SPEC:  
BS: 970: 150 M19 hardened & tempered to "P"  
condition.  
(REF: CQA(W) JABALPUR LNo. 3B2402/CQAW/011  
Dt. 12 JULY 2005)

133  
JWM/CDD

6.3 (✓) (✓)

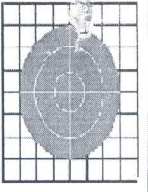
I.D. No. 1899  
Location 01/04/01

18912-W  
Dt. 27-5-2005  
DRAWING SEALED  
CQA (W), JABALPUR

MACHINING INSTRUCTIONS  
UNSPECIFIED TOLERANCES FOR DIMENSIONS AND ANGLES DIMENSIONS  
ANGLES  
HEAT TREATMENT  
FINISH  
MATERIAL L=16  
ROUND 20 DIN1013-st52-3

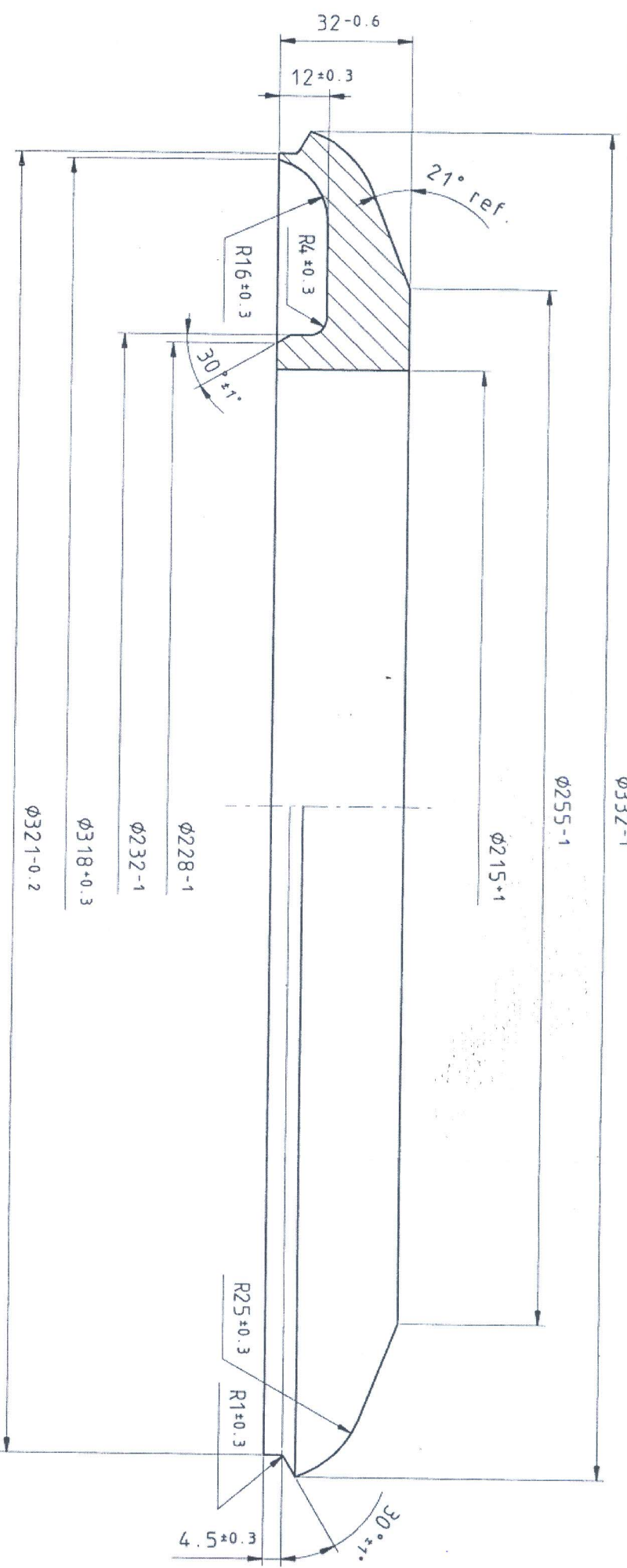
SHARANG 130/155MM\_UG\_OFB\_SLB  
PART NO.  
ASSEMBLY 166-875 (176-1002)  
DISC  
NAME

UPDATED  
Sh: 1  
of: 1  
2:1 A4  
SCALE SIZE  
PREP'D GHD JWM/DO  
APPROVED  
DO/DO DIR/ODC  
ORDNANCE DEVELOPMENT CENTRE, OFC, KANPUR  
PART NO. 166-642



**OFB**

THE DRAWING/DOCUMENT CONTAINS  
 CONFIDENTIAL INFORMATION  
 USE OR DISCLOSURE IN WHOLE OR  
 IN PART SHALL NOT BE MADE  
 WITHOUT THE WRITTEN PERMISSION  
 OF OFB



केवल निविदा हेतु  
 वस्तु संख्या 380096  
 मॉडल नं. 16-04-2018  
 दिनांक 16-04-2018

<p>63</p> <p>MACHINING INSTRUCTIONS</p> <p>UNSPECIFIED TOLERANCES FOR DIMENSIONS AND ANGLES</p> <p>ANGLES</p> <p>HEAT TREATMENT</p> <p>FINISH</p> <p>MATERIAL: <math>\phi 340</math> PLATE 40 DIN 1543 ST52-3</p>		<p>DATE: 01.01.2007</p> <p>ALTERNATIVE/INDIGENOUS MATERIAL SOURCE: BS 970 150 M19, Hardened &amp; tempered to 70°</p> <p>Condition: QDEL: COAW/WJABALPUR LNo. 382402/COAW/W11</p> <p>DR: 12 DEC Y 2005</p> <p>INVA/CDD</p>	
<p>I.D. NO. 1901</p> <p>Location: 16/01/01</p>		<p>18912-M</p> <p>DR: 27-5-2005</p> <p>COA (W), JABALPUR</p>	
<p>SHARANG 130/155MM_UG_OFB_SJB</p> <p>UPROATED</p> <p>Sh: 1 of: 1</p>		<p>DRAWING SEALED</p> <p>138</p>	
<p>ASSEMBLY 166-875 (176-10021)</p> <p>SCALE 1:1</p> <p>A3</p>		<p>APPROVED</p> <p>DO/DO</p> <p>DIR/DIR</p>	
<p>NAME: FLANGE</p>		<p>ORDNANCE DEVELOPMENT CENTRE, U.C. RAIPUR</p> <p>Part No: 166-876</p>	