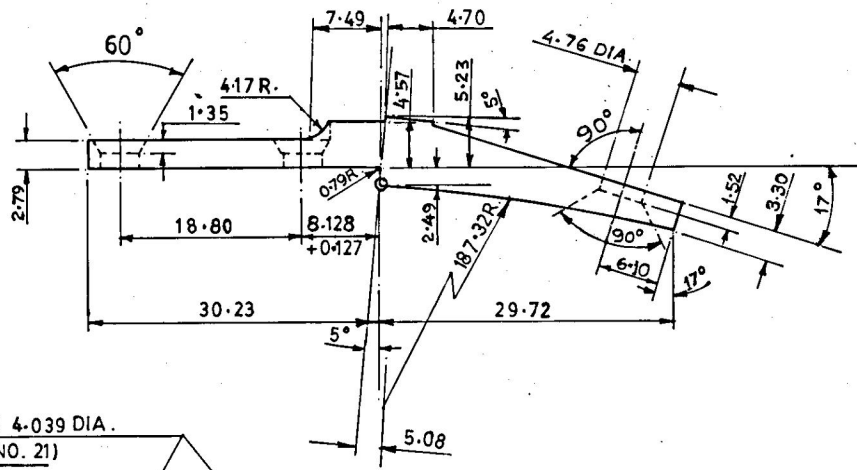


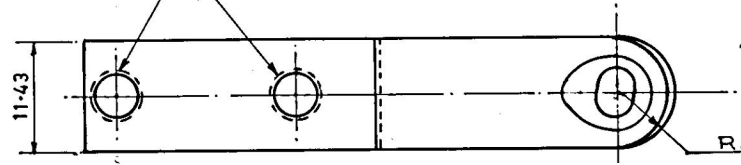
1005-001634

D.S.CAT. NO.

DIMNS ARE IN mm.



2-HOLES 4.039 DIA.  
(DRILL NO. 21)



NOTE :-

FOR EXPLANATION OF DETAILS WHEREVER NOT SPECIFIED REFER D.D. NOTE SHEET NO. 3 (LATEST ISSUE)

NOTE FOR SPECN. :-

FOR SPECN. LATEST ISSUE SHOULD BE FOLLOWED.

METRIC

4-1-96		23217-SA	PROFORMA CHANGED, NEGATIVE RE-TRACED AND DRAWING RE-SEALED					DRN.	CHD.	TRD.	SKH/COMP.	ASSY.	1005-001632	
			PREVIOUS D.C. Nos. 15036 SA, 17630 SA, 18525 SA & 19351 SA					SCALE : 2:1					EST MASS	
								MFG/INSP INSTRUCTIONS		APPROVED DT. 19.6.67.		AHSP		
								DT. 05.01.96		NEG. RE-TRACED		CQA(SA) ICHAPUR		
DATE		AUTHY.	BRIEF RECORD	ZONE	VC; D.O.	G.O.		MATERIAL	MATL. :- BS 970 PT.1 SEC.2 Gr. 070 M55		DGNR'S REF.		ARDE 657/144	
SEALED :-		D.C.15036 - SA DT.15.2.77.						H.T/HARDNESS	200-250 HV (38-42.5 HRD)		PART NO.			
NOMENCLATURE		EXTENSION							PROTECTIVE FINISH	ON ASSEMBLY 1005-001632		D.S.CAT. NO.		1005 - 001634