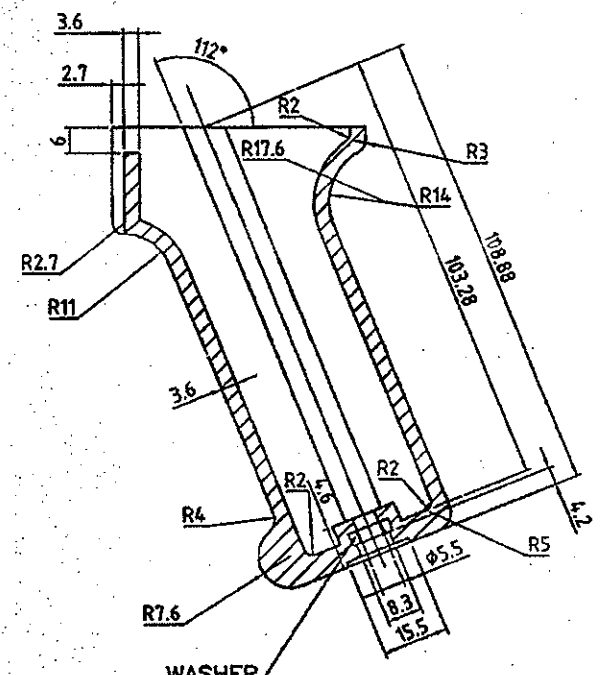


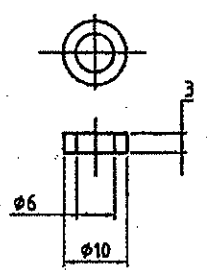
VERIFIED CORRECT COPY
 OF APPROVED DRAWINGS
 AT THIS DATE 12/27/18

Design & Drawing Office
 Ordnance Factory,
 Tiruchirappalli-620016

ON CONTROLLED COPY

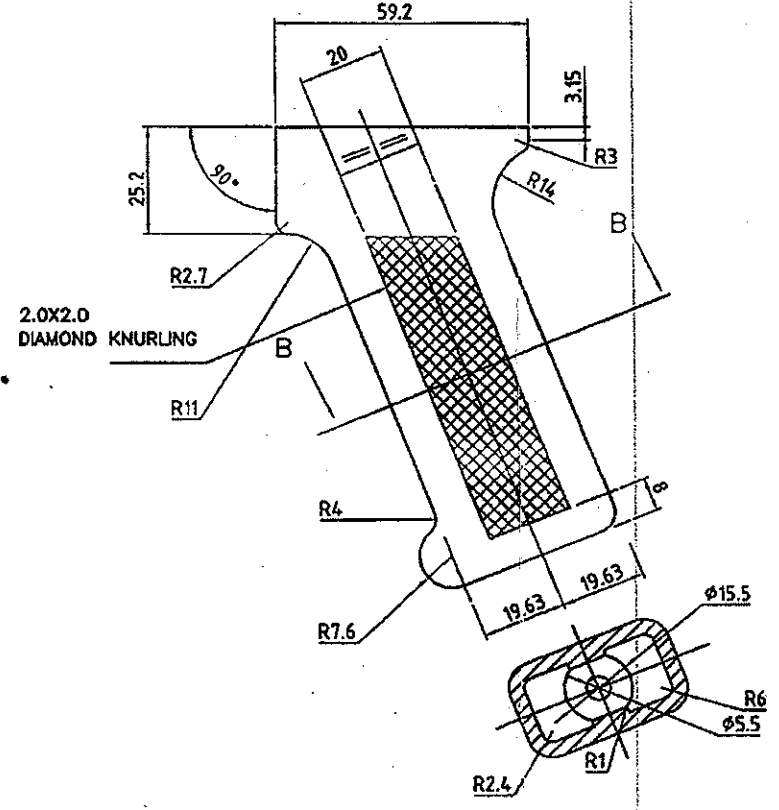
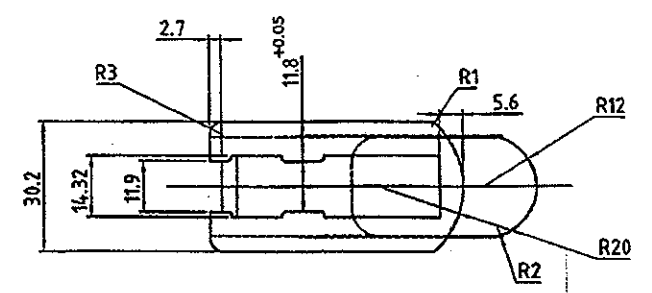


WASHER TO BE INSERTED
 IN MOULD FOR STRENGTHENING PART SECTION A-A



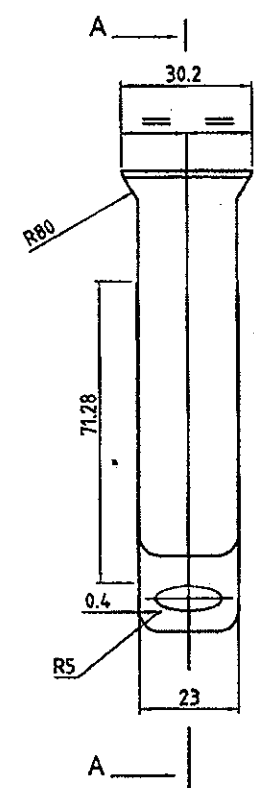
WASHER

MATERIAL FOR WASHER
 STANDARD ITEM CAN BE USED
 OR ANY MILD STEEL OR MEDIUM CARBON STEEL CAN BE USED
 (En-3A, 3C, En-5, En-8, En-9)



FILLET RADII ARE SAME ON FOUR SIDES

PART SECTION B-B



MATERIAL:-
 GLASS FIBRE REINFORCED POLYAMIDE (NYLON 6 or 66)
 MELTING POINT : NOT LESS THAN 200 °C
 COLOUR : MATT FINISH BLACK

K-1026

PART NO.	DESCRIPTIONS	NO OFF	MATERIAL	TREATMENT	REMARKS
2	WASHER	1			
1	GRIP PISTOL	1			

DGM/PROJECT	SIGNATURE & DATE.	SUB: GRIP PISTOL	SCALE 1:1
TRACED		FOR: GENERAL ASSY.	STORE DRG.NO. K-1026
DRAWN		OF: TRICHY ASSAULT RIFLE	OPERATION NO. ----
CHECKED		DES.REF.NO.	
HOS/D&DO		DRG. No.: K-1026	
OFFICER/PRD.N.		ORDNANCE FACTORY TIRUCHIRAPPALLI-16.	SHEETS: 1
OFFICER/D&DO	Se K...		SHEET No.: 1
AMENDMENTS	SIG.& DATE	APPROVED ON. 06-3-18	