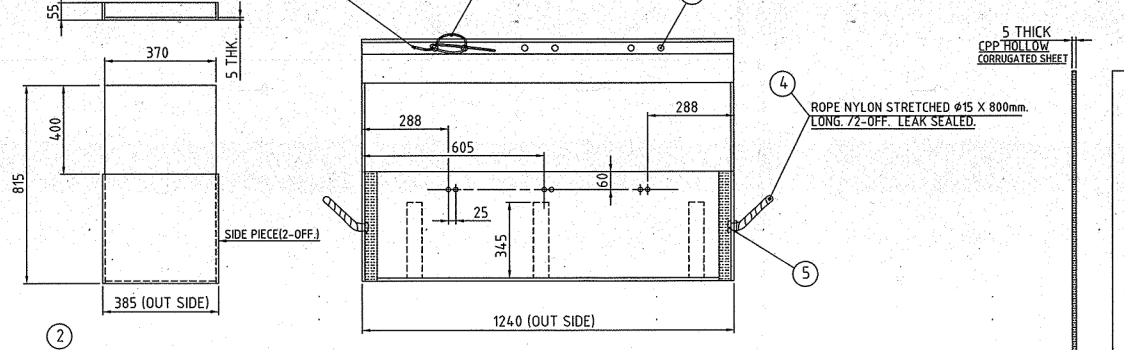
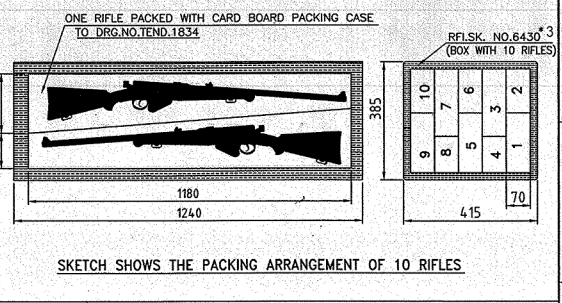
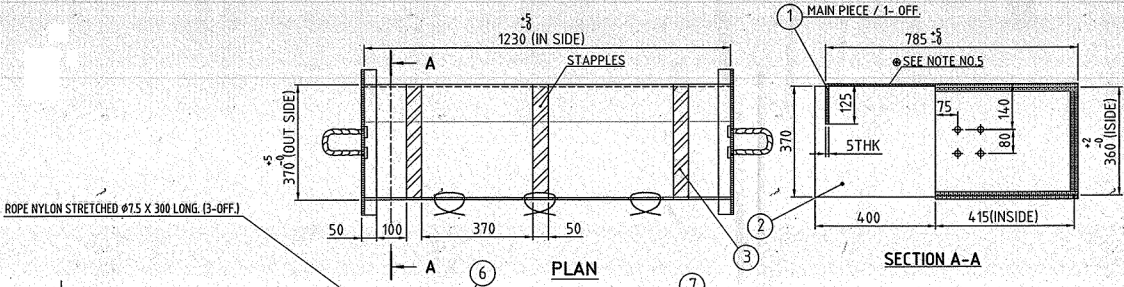
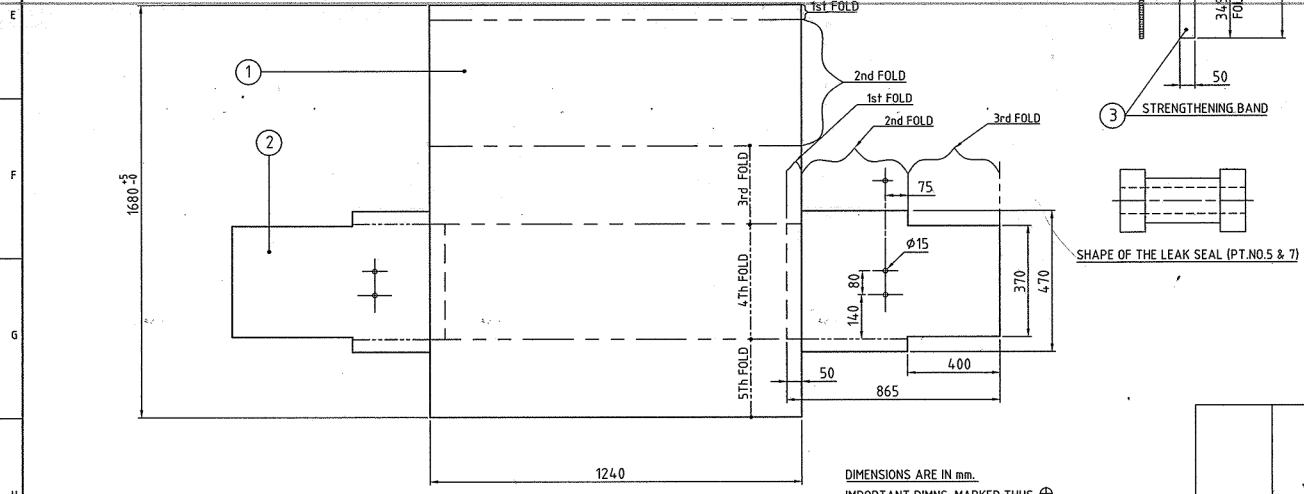
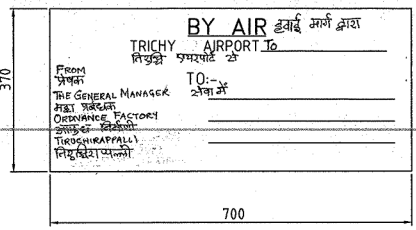


DRG. NO. RFLSK. NO. 6430\*3



- NOTES:-
- SPECIFIED PHYSICAL PROPERTIES:-
1. COMP. STRENGTH - 375 Kg.
  2. ABLE TO WITH STAND 1 hr. VIBRATION OF 225 CYCLES/ MIN AND 2.54 CM. AMP.
  3. ABLE TO WITH STAND IMPACT ON ALL SIX SURFACES.
  4. ABLE TO WITH STAND INCLINED IMPACT AT 7km./hr. WITH 40 Kg.
  5. PRINTED INSCRIPTION (BLACK) ON TOP FLAP LETTER SIZE 25mm.



MATL:- CPP HOLLOW CORRUGATED (SUN PAC SHEET)

7	LEAK SEAL (STD.)	12	PLASTIC	---	BLACK COLOUR
6	ROPE (SEALING)	3	NYLON	---	WHITE COLOUR
5	LEAK SEAL (STD.)	4	PLASTIC	---	BLAK COLOUR
4	CARRYING HANDLE	2	ROPE NYLON STRETCHED Ø15	---	YELLOW /BLUE
3	STRENGTHENING BAND	3	AS STATED	---	YELLOW /BLUE
2	SIDE PIECE	2	AS STATED	---	YELLOW /BLUE
1	MAIN PIECE	1	AS STATED	---	YELLOW /BLUE

NOTE:- NEW NEGATIVE PREPARED TO SHOW PACKING DETAILS. (7-4-07)

DIMENSIONS ARE IN mm.  
IMPORTANT DIMNS. MARKED THUS ⊕  
INFORMATION MARKED THUS † TO BE MARKED ON.  
UN TOLERATED DIMNS. ASPER IS: 2102 (MEDIUM)

PART NO.	DESCRIPTIONS	NO OFF	MATERIAL	TREATMENT	REMARKS
	SIGNATURE & DATE.				
TRACED	SUB: CPP HOLLOW CORRUGATED BOX (SUN PAC SHEET) TO CARRY 10 RIFLES				SCALE NTS
DRAWN	OF: .315" SPORTING RIFLE				STORE DRG. NO.
CHECKED	DES. REF. NO. ---				OPERATION NO.
OIC/D&DO	DRG. No.: RFLSK. NO. 6430*3				---
OFFICER/PRODM	ORDNANCE FACTORY TIRUCHIRAPPALLI-16.				SHEETS: 1
OFFICER/D&DO	---				SHEET No.: 1
AMENDMENTS	SIG. & DATE	APPROVED ON.	7-4-07		