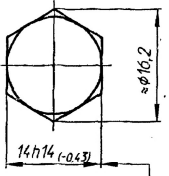
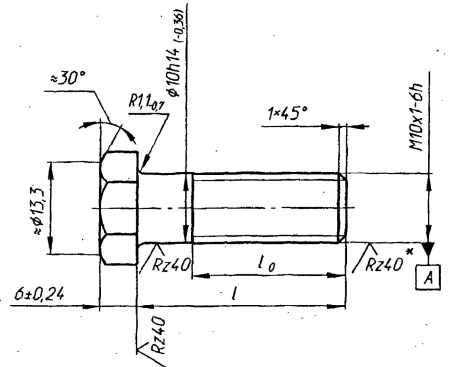


DRG. INDIANISED BASED ON RUSSIAN ORIGINAL ISSUE - 6
COMMON TO T-72 & BLT

DRAWING NUMBER
520.01.003

SHEET No. 1 OF 1

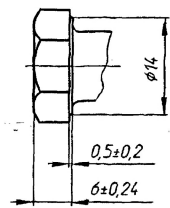
Rz80 ✓



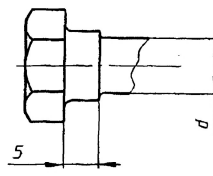
T/2 0,45 (A) (M)

ALTERNATE DESIGN OF BOLT

Вариант
ALTERNATE



Вариант
ИСПОЛНЕНИЯ БОЛТА $> 35\text{MM}$



- Alternate material: Steel 40 GOST 1050-88 and Steel 20nc GOST 10702-78.
- Diameter d should be within the pitch diameter of thread.
- Bolt head may be made as per GOST 7796-70.
- When making thread by the method of rolling, unthreaded part of rod may be made along the pitch diameter of thread and chamfer at the end of rod is not to be made.
- Coating Zn 6 Chromotizing.
- * Surface finish is to be ensured by tool.
- Other requirements should be as per GOST 1759.0-87 and 520.TY1.

Обозначение PART NO	l mm		l ₀ mm		WEIGHT Kg Масса, кг
	НОМН. NOMINAL	пред. откл.	НОМН. NOMINAL	пред. откл.	
520.01.003	18		18		0,0181
-01	20		20		0,0192
-02	22		22		0,0204
-03	25		25		0,0221
-04	30	±0,8	30	+2,5	0,0249
-05	35		26		0,0281
-06	40		26		0,0312
-07	45		26		0,0343
-08	50		26		0,0374
-09	55		26		0,0405
-10	60	±1,0	26		0,0435
-11	70		26	0,0497	

PILOT SAMPLE SHOULD BE APPROVED BY A H S P BEFORE BULK PRODUCTION.

EST. WT. (kg) TO BE STAMPED OR MARKED WHERE INDICATED THUS # (LETTERS)
SEE TABLE

ALL SHARP EDGES AND CORNERS TO BE REMOVED UNLESS OTHERWISE STATED MACHINED CORNERS TO HAVE R OUTSIDE R INSIDE EQUIVALENT CHAMFERS ARE PERMISSIBLE.

EQ.LT.MATL: Steel Design 40 C8 to IS:1570/79-2004, Pt-2.

DRN	CHD	APPD	DATE	SCALE	DIMENSIONS IN mm	TOLERANCE ON DIMNS UNLESS OTHERWISE STATED IS: 2102-69	ALL THREADS TO CONFORM TO
MATERIAL:-				USED ON:-			
STEEL 20 GOST 1050-88				PV572.0783.0002 PV572.0711.0051 PV572.0711.0052			
CONTROLLERATE OF QUALITY ASSURANCE (HEAVY VEHICLES)						AVADI	
TITLE:-						BOLT	
D S CAT NUMBER				DRAWING NUMBER			
				520.01.003			

356

SUPPLY CODE
U-01-1-1
D90033

F-33
3

SIZE A4x3