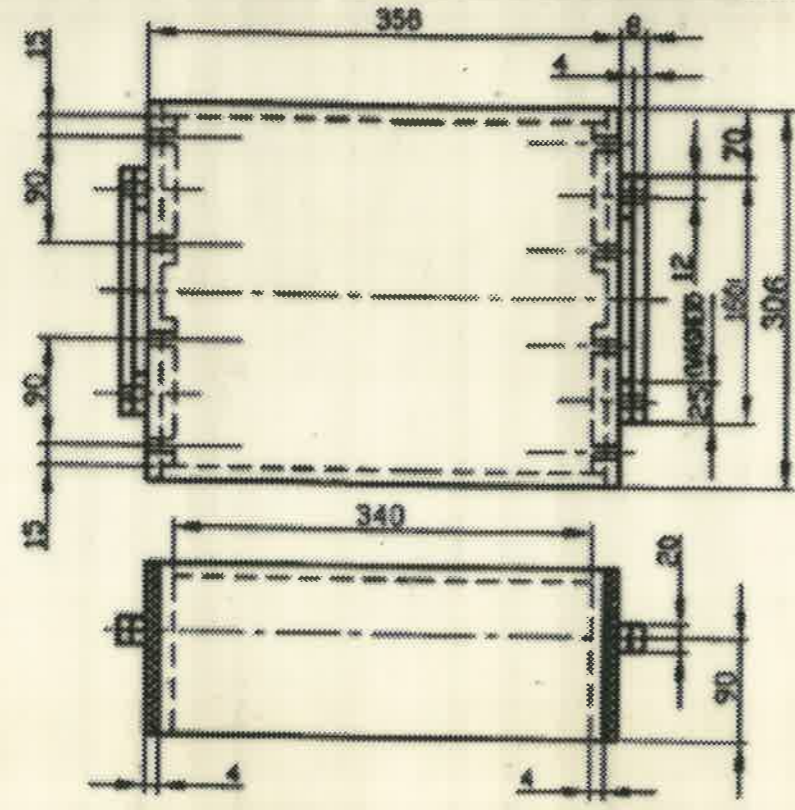
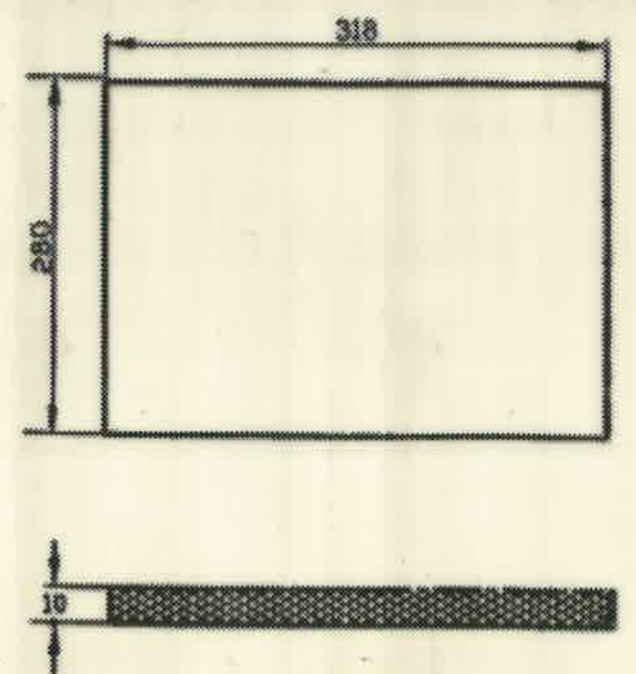
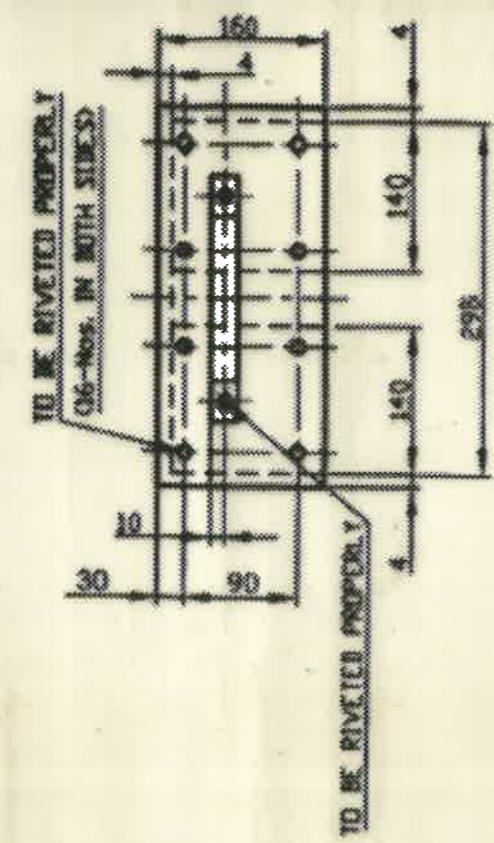


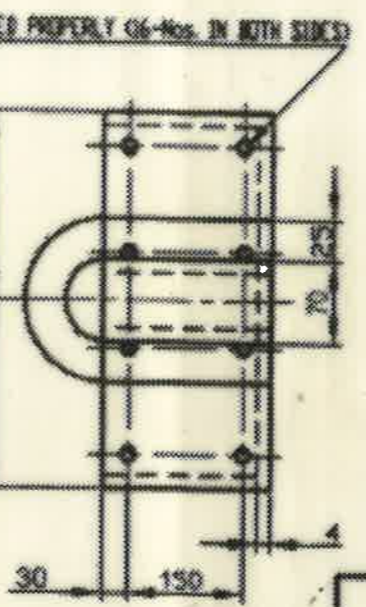
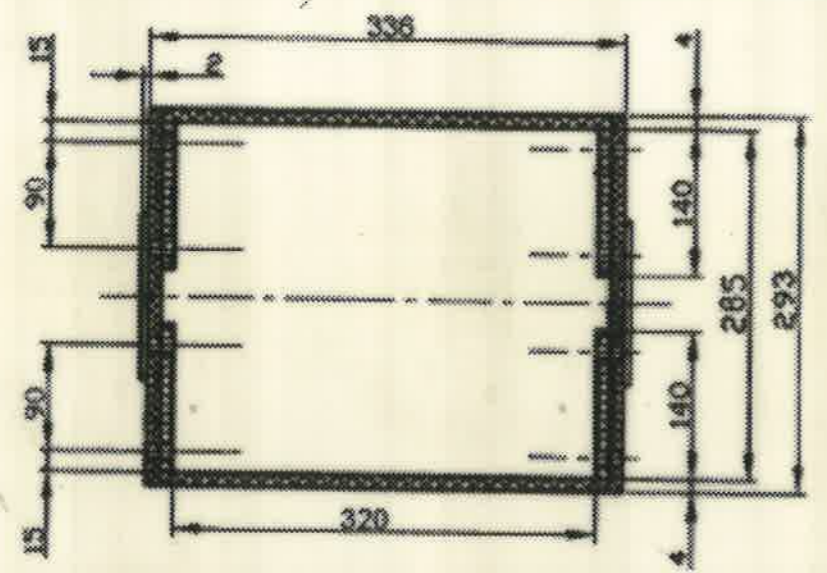
DRG. NO. :- CD-528



BOX (TOP/LID)



BASE SUPPORT



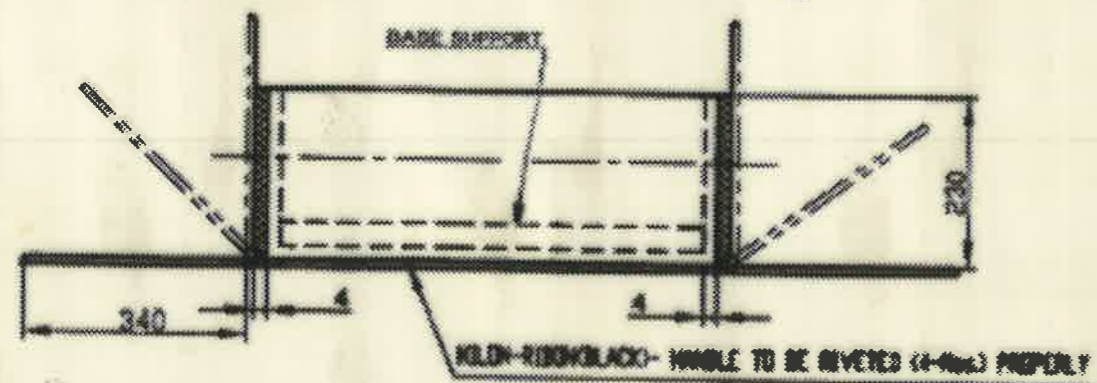
BOX (BOTTOM)

MATL:-

FOR BOX (TOP/LID & BOTTOM) :- HIGH IMPACT CO-POLYMER OF POLYPROPYLENE CORRUGATED SHEET OF 4mm THICKNESS & DENSITY OF 900-1100 GSM. IN BLUE COLOUR.

FOR BASE SUPPORT :- EXPANDED P.E. FOAM WITH DENSITY OF 20-35 Kg/m³ HAVING TENSILE STRENGTH OF 1.5-3.5 Kg/cm² (TRANSVERS DIRECTION), 2.5-5.0 Kg/cm² (MACHINE DIRECTION) AS PER IS/2888

GUIDE TO SUPPLY ONLY



WM/PISTOL :- <i>27/10/18</i>	COMPT :- PISTOL (0.32)	STN. NO. :-
SCHEDULE NO :-	PACKING BOX (FOR 5 NOS. PISTOL CABINETS)	
SCALE - M.T.S. PROJECTION		
DRAWN BY :- <i>S. Madhav</i>	DRG. NO. :- CD-528	
CHECKED BY :-	M / C :-	
APPROVED BY :- <i>30/10/18</i>	No. of SITS - 1	
CONCURRED BY :- JWM/PISTOL	G. & S. FY. COSSIPURE	
SIGN :-	DATE :- 29/10/18	SHT. No - 1