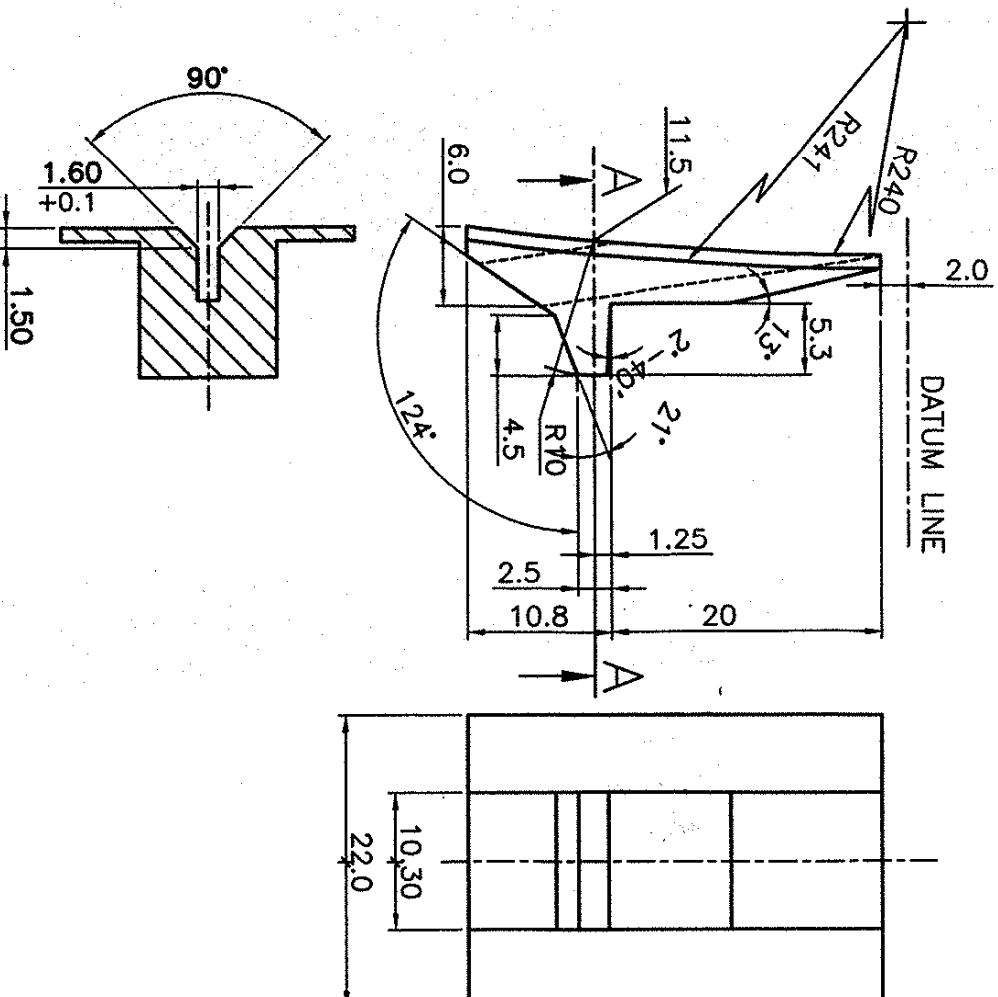


DIMENSIONS ARE IN mm.
 UNTOLERATED DIMS. AS PER IS : 2102 (MED)
 ALL SHARP EDGES TO BE REMOVED



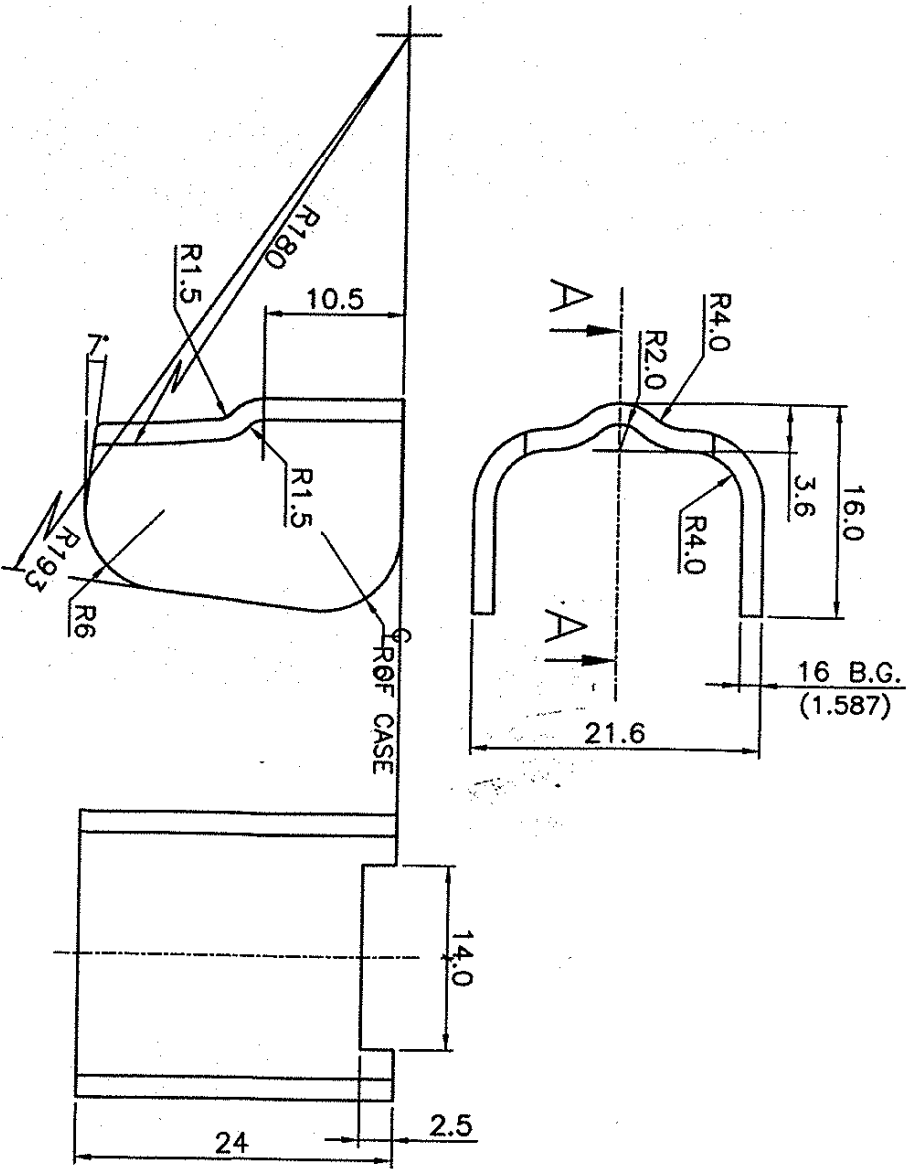
MATL:- B.S.970 PT.1,1983 Gr. 080,M40 (En-8)
 PROTECTIVE FINISH ON ASSY K-7015

Se. Kua
 DGM
 (NODAL OFFICER
 FOR TAR)

PART NO.	DESCRIPTIONS	NO OFF	MATERIAL	TREATMENT	REMARKS
	REAR CATCH	1	AS ABOVE		

TRACED	SIGNATURE & DATE	SUB: REAR CATCH	SCALE NTS
DRAWN	<i>SK</i>	FOR: MAGAZINE (STEEL)	STORE DRG:NO.
CHECKED		OF: TRICHY ASSAULT RIFLE	K-7015
HOS./D&DO		DES.REF.NO.	OPERATION NO.
OFFICER/PRODN.		DRG. TAR-RB-K-7015	-
OFFICER/D&DO	<i>SK</i>	ORDNANCE FACTORY	
		TIRUCHIRAPPALLI-16.	
AMENDMENTS & DATE	SIG. APPROVED ON.		SHEETS: 1
			SHEET No.: 1

DIMENSIONS ARE IN mm.
 UNTOLERATED DIMS. AS PER IS : 2102 (MED)
 ALL SHARP EDGES TO BE REMOVED



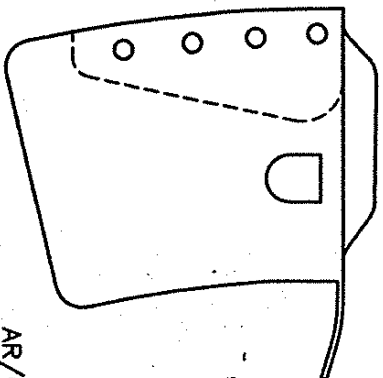
FINISH:—ON ASSY
 MATL:—B.S.1449:CS-80, OR IS 7226:C-80
 TREAT:— HRD & TEMP. 280 TO 330 VPN

S.K. K. a DGM (NODAL OFFICER FOR TAR)		FRONT CATCH		AS ABOVE		REMARKS	
PART NO.	DESCRIPTIONS	NO OFF	MATERIAL	TREATMENT	SCALE		
	SIGNATURE & DATE:	SUB: FRONT CATCH			STORE DRG.NO. K-7016		
TRACED		FOR: MAGAZINE (STEEL)			OPERATION NO.		
DRAWN		OF: TRICHY ASSAULT RIFLE			DRG. TAR-RB-K-7016		
CHECKED		DES. REF. NO.			SHEETS: 1		
HOS/D&DO					SHEET No.: 1		
OFFICER/ BRODN.							
OFFICER/ D&DO							
AMENDMENTS & DATE	SIG.	APPROVED ON.			ORDNANCE FACTORY TIRUCHIRAPPALLI-16.		

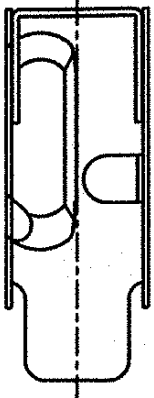
0202 ON GRD

DIMENSIONS ARE IN mm.
 UNTOLERATED DIMNS. AS PER IS : 2102 (MED)
 MARK DRAWING No.

TO BE SPOT WELD.



AR/020/1



AR/020/2

FINISH:-PHOSPHATED TO SPECN.WPN/GEN/3 CLASS
 PAINT RFU STOVING BLACK TO SPECN.
 DEF.1407 MATT FINISH.

NOTE:- STRESS RELIEVED AFTER WELDING.

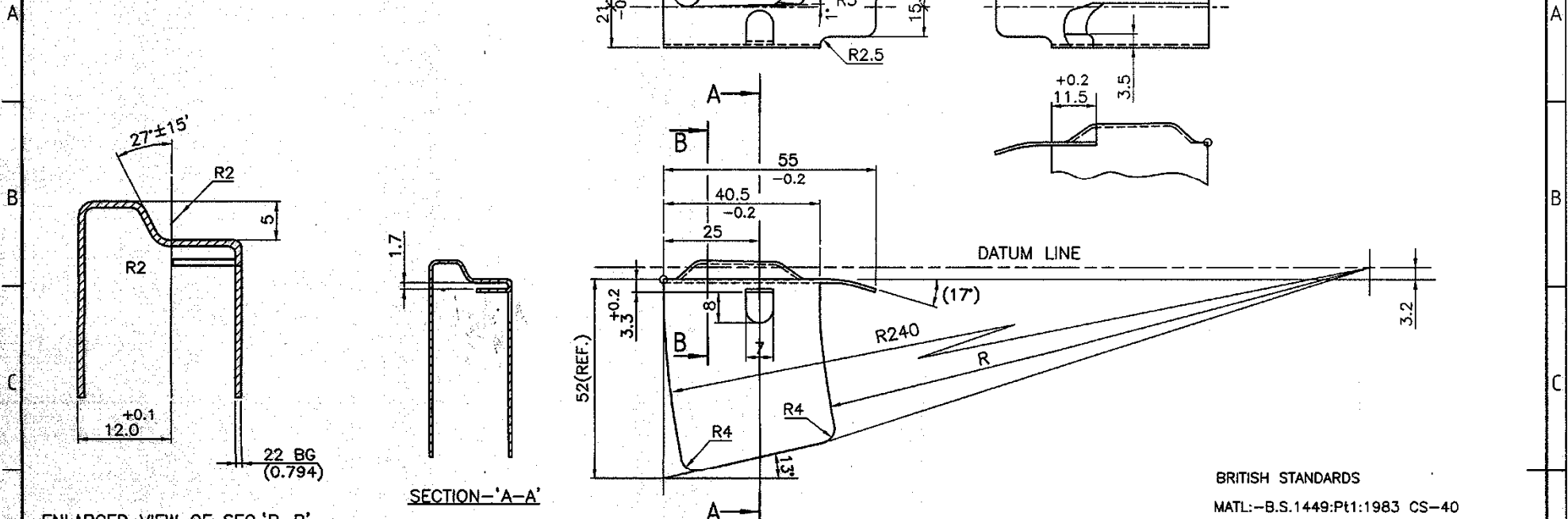
E. Kura
 DGM
 (NODAL OFFICER
 FOR TAR)

PART NO.	DESCRIPTIONS	NO OFF	MATERIAL	TREATMENT	REMARKS
1	PLATFORM MAGAZINE SUB ASSY		---		AS ABOVE
	TRACED				SCALE
	DRAWN				STORE DRG.NO. K-7020
	CHECKED				OPERATION NO. -
	HOS/D&DO				
	OFFICER/ PRODN.				
	OFFICER/ D&DO				
	APPROVED ON:				

ORDNANCE FACTORY
 TIRUCHIRAPPALLI-16.

SHEETS: 1
 SHEET No.: 1

TREAT:-
HRD & TEMP. 280 TO 330 VPN

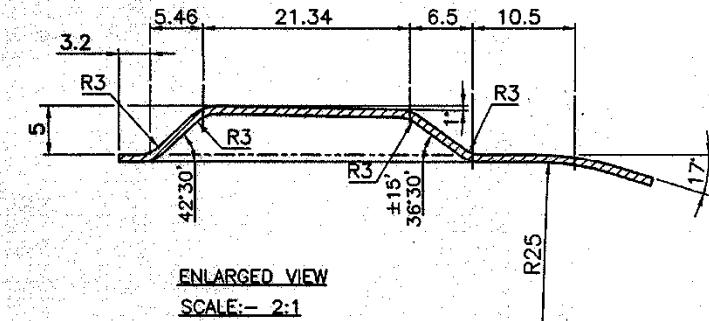


ENLARGED VIEW OF SEC. 'B-B'
SCALE:- 2:1

SECTION-'A-A'

BRITISH STANDARDS
MATERIAL:-B.S.1449:Pt1:1983 CS-40
ALT MATERIAL1:-B.S.1449:Pt1:1983 CS-50
ALT MATERIAL2:-B.S.1449:Pt1:1983 CS-60

IN INDIAN STANDARDS
MATERIAL:-IS 7226-1974, C40
ALT MATERIAL1:-IS 7226-1974, C-55



ENLARGED VIEW
SCALE:- 2:1

FINISH:-PHOSPHATED TO SPCN.WPN/GEN/3 CLASS I
PAINT RFU STOVING BLACK TO SPECN.
DEF.1407 MATT FINISH.

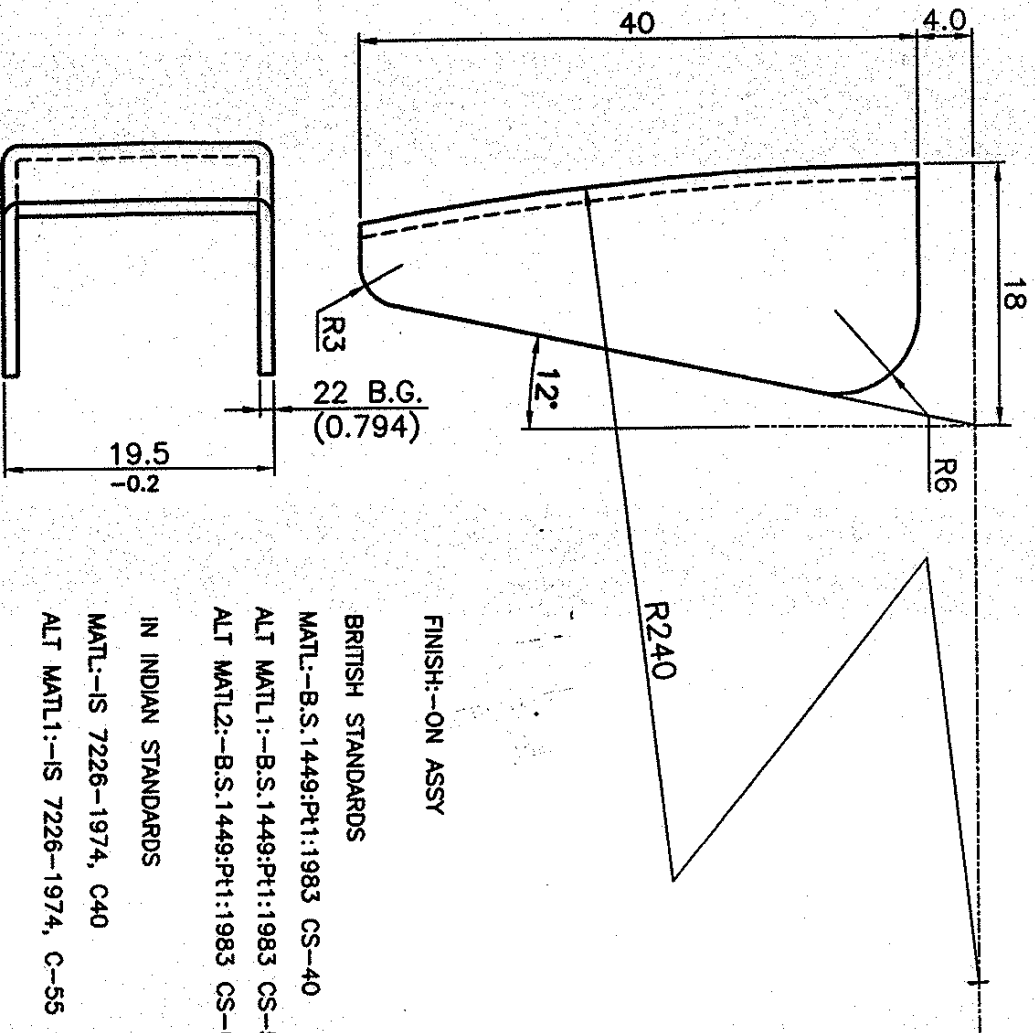
DIMENSIONS ARE IN mm.
UNTOLERATED DIMNS. AS PER IS : 2102 (MED)
MARK DRAWING No.

K-7021

Se. Kama DGM (NODAL OFFICER FOR TAR)		PLATFORM		AS ABOVE	
PART NO.	DESCRIPTIONS	NO OFF	MATERIAL	TREATMENT	REMARKS
TRACED	SIGNATURE & DATE	SUB: PLATFORM			SCALE
DRAWN		FOR: MAGAZINE (STEEL)			STORE DRG. NO.
CHECKED		OF: TRICHY ASSAULT RIFLE			K-7021
HOS/D&DO		DES. REF. NO.			OPERATION NO.
OFFICER/PRODN.		DRG. No.: TAR-RB-K-7021			-
OFFICER/D&DO		ORDNANCE FACTORY TIRUCHIRAPPALLI-16.			SHEETS: 01
AMENDMENTS	SIG. & DATE	APPROVED ON.	SHEET No.: 01		

2702-K NO. DRG.

DIMENSIONS ARE IN mm.
 UNTOLERATED DIMNS. AS PER IS : 2102 (MED)
 ALL SHARP EDGES TO BE REMOVED




HRD & TEMP. 280 TO 330 VPN

TREAT:--

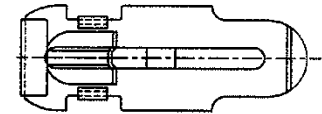
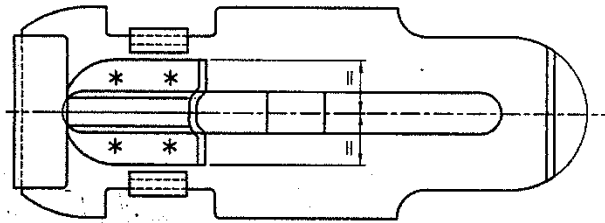
FINISH:--ON ASSY
 BRITISH STANDARDS
 MATL.--B.S.1449:Pt1:1983 CS-40
 ALT MATL1:--B.S.1449:Pt1:1983 CS-50
 ALT MATL2:--B.S.1449:Pt1:1983 CS-60

IN INDIAN STANDARDS
 MATL.--IS 7226-1974, C40
 ALT MATL1:--IS 7226-1974, C-55

K-7022

<p><i>E. K. Ma</i> DGM (NODAL OFFICER FOR TAR)</p>		<p>PLATE PLATFORM</p>		<p>AS ABOVE</p>		<p>REMARKS</p>	
<p>PART NO. </p>		<p>DESCRIPTIONS & DATE</p>		<p>NO OFF</p>		<p>SCALE</p>	
<p>TRACED <i>SK</i></p>		<p>DRAWN</p>		<p>MATERIAL</p>		<p>STORE DRG. NO. K-7022</p>	
<p>CHECKED</p>		<p>HOS/D&DO <i>SK</i></p>		<p>TREATMENT</p>		<p>OPERATION NO.</p>	
<p>OFFICER/PRODN.</p>		<p>OFFICER/D&DO <i>SK</i></p>		<p>DRG. No.: TAR-RB-K-7022</p>		<p>SHEETS: 1</p>	
<p>AMENDMENTS</p>		<p>SIG. & DATE</p>		<p>ORDNANCE FACTORY TIRUCHIRAPPALLI-16.</p>		<p>SHEET No.: 1</p>	

SPOT WELDING



ACTUAL SIZE

GUIDE SPRING
K-7031

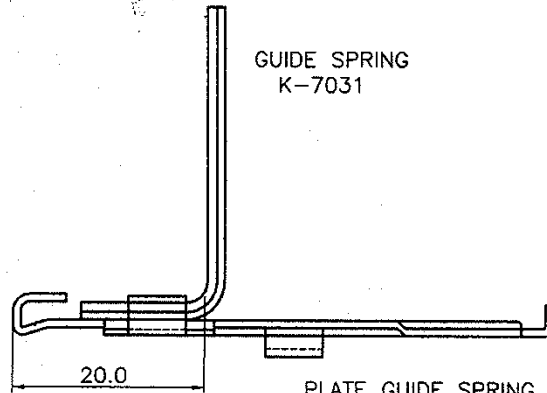


PLATE GUIDE SPRING
K-7032

FINISH:-PHOSPHATED TO SPECN.GEN/3 CLASS 2
PAINT REFU STOVING BLACK TO SPECN.
DEF.1407 MATT FINISH.

NOTE:- STRESS RELIEVED AFTER WELDING.

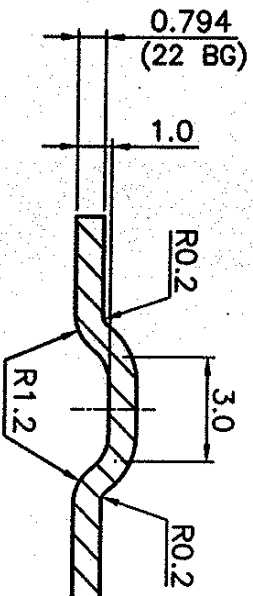
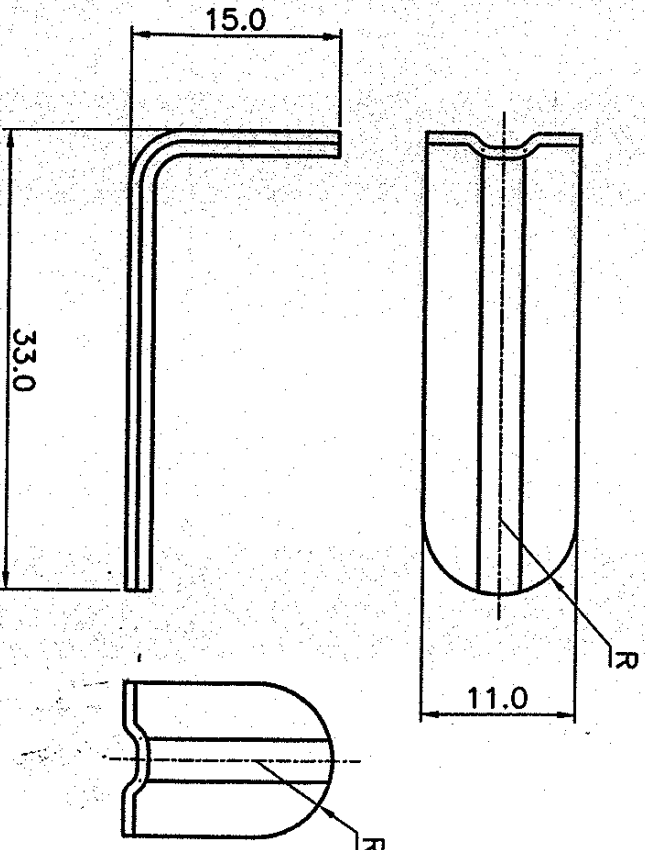
DIMENSIONS ARE IN mm.
UNTOLERATED DIMNS. AS PER IS : 2102 (MED)
MARK DRAWING No.

S. K. S.
DGM
(NODAL OFFICER
FOR TAR)

PLATE GUIDE SUB ASSY					
PART NO.	DESCRIPTIONS	NO OFF	MATERIAL	TREATMENT	REMARKS
	SIGNATURE & DATE <i>S.K.S.</i>				SCALE
TRACED					STORE DRG.NO. K-7030
DRAWN					OPERATION NO. -
CHECKED					
HOS/D&DO					
OFFICER/ PRODN.					
OFFICER/ D&DO					
AMENDMENTS	SIG. & DATE	APPROVED ON.	SUB: PLATE GUIDE SUB ASSY FOR: MAGAZINE (STEEL) OF: TRICHY ASSAULT RIFLE DES.REF.NO. DRG. No.: TAR-RB-K-7030 ORDNANCE FACTORY TIRUCHIRAPPALLI-16.		
			SHEETS: 01 SHEET No.: 01		



DIMENSIONS ARE IN mm.
 UNTOLERATED DIMS. AS PER IS : 2102 (MED)
 ALL SHARP EDGES TO BE REMOVED



FINISH--ON ASSY

BRITISH STANDARDS

MATL--B.S.1448;PT:1983 CS-40

ALT MATL.1--B.S.1448;PT:1983 CS-50

ALT MATL.2--B.S.1448;PT:1983 CS-60

IN INDIAN STANDARDS

MATL--IS 7228--1974, C40

ALT MATL.1--IS 7228--1974, C-55

TREAT--

HRD & TEMP. 280 TO 330 VPM

K-7031

DGM (NODAL OFFICER FOR TAR)		PART NO.		DESCRIPTIONS		SIGNATURE & DATE		GUIDE SPRING		AS ABOVE		NO OFF		MATERIAL		TREATMENT		REMARKS	
TRACED		DRAWN		CHECKED		HOS/D&DO OFFICER/ PRODN.		SUB: GUIDE SPRING FOR: MAGAZINE ASSY (STEEL) OF: TRICHY ASSAULT RIFLE		SCALE		STORE DRG.NO. K-7031		OPERATION NO.		SHEETS: 1		SHEET No.: 1	
AMENDMENTS & DATE		SIG. DATE		APPROVED ON.		DES. REF. NO.		DRG. No.:		TAR--RB-K-7031		ORDNANCE FACTORY TRUCHIRAPPALLI-16.		OPERATION NO.		SHEETS: 1		SHEET No.: 1	

F

E

D

C

B

A

D

D

D

C

B

A

