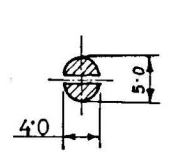
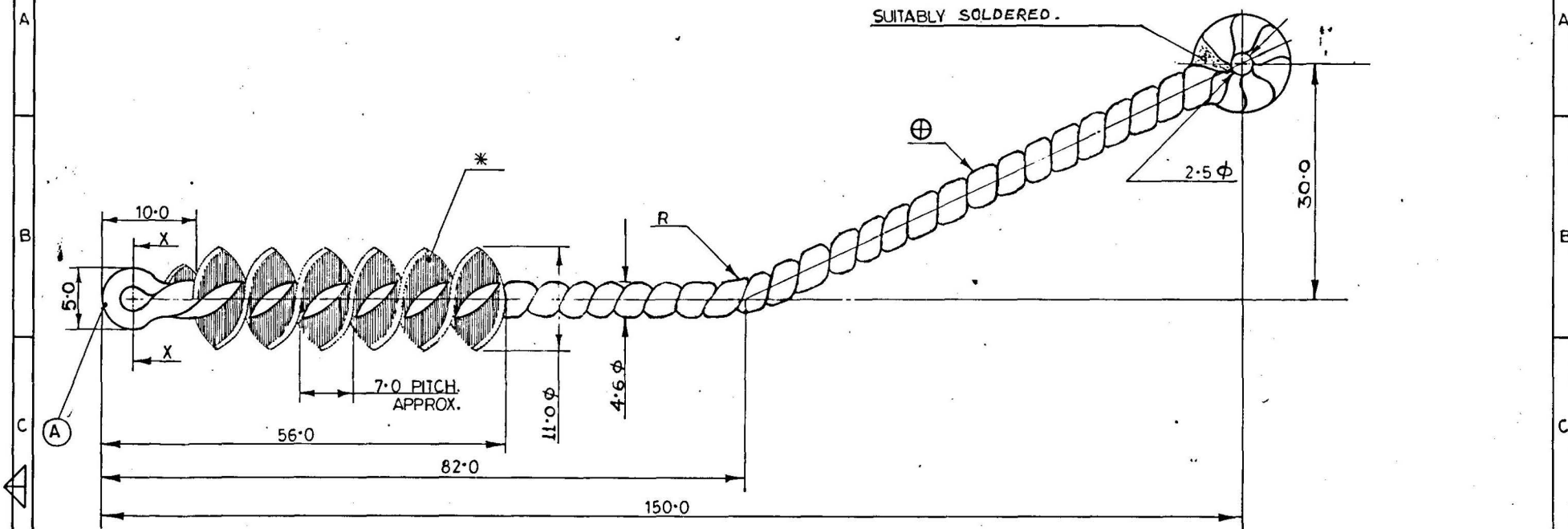
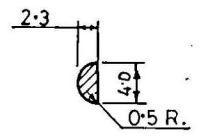


D.S. CAT. 1005 - 007745

DRAWING CONVENTIONS CONFORM TO J.S.G - 0104
DIMNS. ARE IN m.m. GEN. TOL. 'COARSE' TO IS:2102



SECTION -X-X



PART SECTION AT 'A'

- * BRISTLE: NYLON IS:1843 TYPE 2 OR 3 TO 1.0 φ.
- ⊕ MATL:- IS:280-2006 (SOFT) GALVANISED SEMI CIRCULAR CROSS SECTION

.. NSN: B1/1005-72-000074E

16-9-16 26943-SA		MATERIAL AMENDED		DRN.	CHD.	TRD. P. Dutta	COMP. Mambur	AHSP. CQA(SA), CHAPUR
26-06-10 26516-SA		NSN ADDED		SCALE :- 2:1.		EST. MASS		
19-10-05 26100-SA		SUITABLY SOLDERED WAS SUITABLY BRAZED.				APPROVED	DT. 26.6.85	ASSY.
05-02-98 24044-SA		PROFORMA CHANGED, NEG. RE-TRACED & DRG. PROV. RE-SEALED.		DT. 05-2-98		NEG. RE-TRACED.		
		PREVIOUS D.C. NO. 23779- SA.						
DATE	AUTHY.	BRIEF RECORD	ZONE	I/C:DO	GO.	MATERIAL:-	AS ABOVE	DG NR'S REF. ARDE/TA/94/3
SEALED :-		PROV. D.C. NO. 23779- SA, DT. 27.3.97		SIGN.		H.T/HARDNESS:-		PART NO.
NOMENCLATURE :- BRUSH CLEANING CHAMBER				PROTECTIVE FINISH:-				DRG. NO.
								D.S. CAT. 1005-007745 NO.