



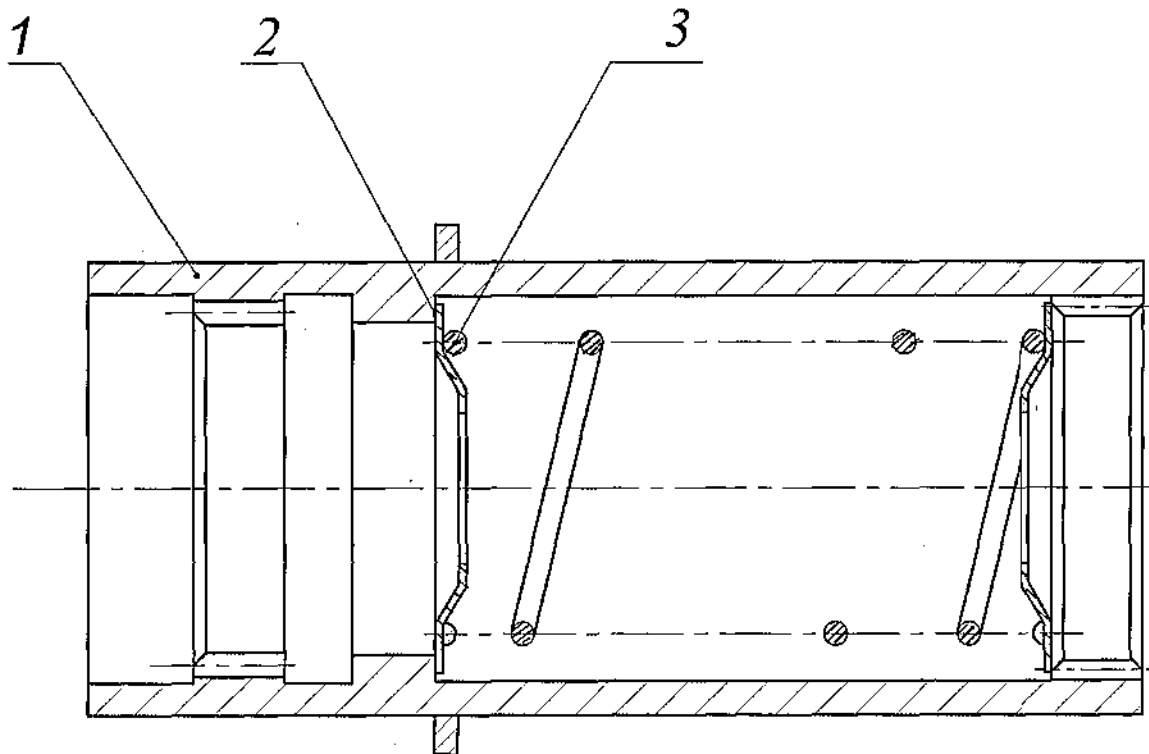
DRAWING NUMBER

**Cb.3334-10-8**

SHEET No. 1 OF 1

DRG. INDIANISED BASED ON RUSSIAN ORIGINAL ISSUE - 3  
 DRG. REPLACES Cb 3334-10-5 VIDE. NOTN. NO: 92-238

F-157  
 53  
 69



PILOT SAMPLE SHOULD BE APPROVED BY A H S P BEFORE BULK PRODUCTION.

EST. WT.

**0.851 Kg**

TO BE STAMPED OR MARKED WHERE  
 INDICATED THUS # (          LETTERS )

ALL SHARP EDGES AND CORNERS TO BE REMOVED UNLESS  
 OTHERWISE STATED MACHINED CORNERS TO HAVE R OUT -  
 SIDE R INSIDE EQUIVALENT CHAMFERS ARE PERMISSIBLE.

MATERIAL :-

USED ON :-

Cb 3334-08-2

ISSUE DATE

NATURE OF AMENDMENTS

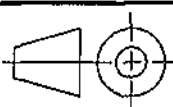
DRN

SCALE :- 1:1

CONTROLLERATE OF QUALITY ASSURANCE (HEAVY VEHICLES)  
 AVADI

CHD

TOLERANCE ON DIMENSIONS  
 UNLESS OTHERWISE STATED  
 IS : 2102 - 69



TITLE :-

**ASSY DRIVE COUPLING**

APPD

D S CAT NUMBER

DRAWING NUMBER

DATE

29.01.08

ALL THREADS TO  
 CONFORM TO

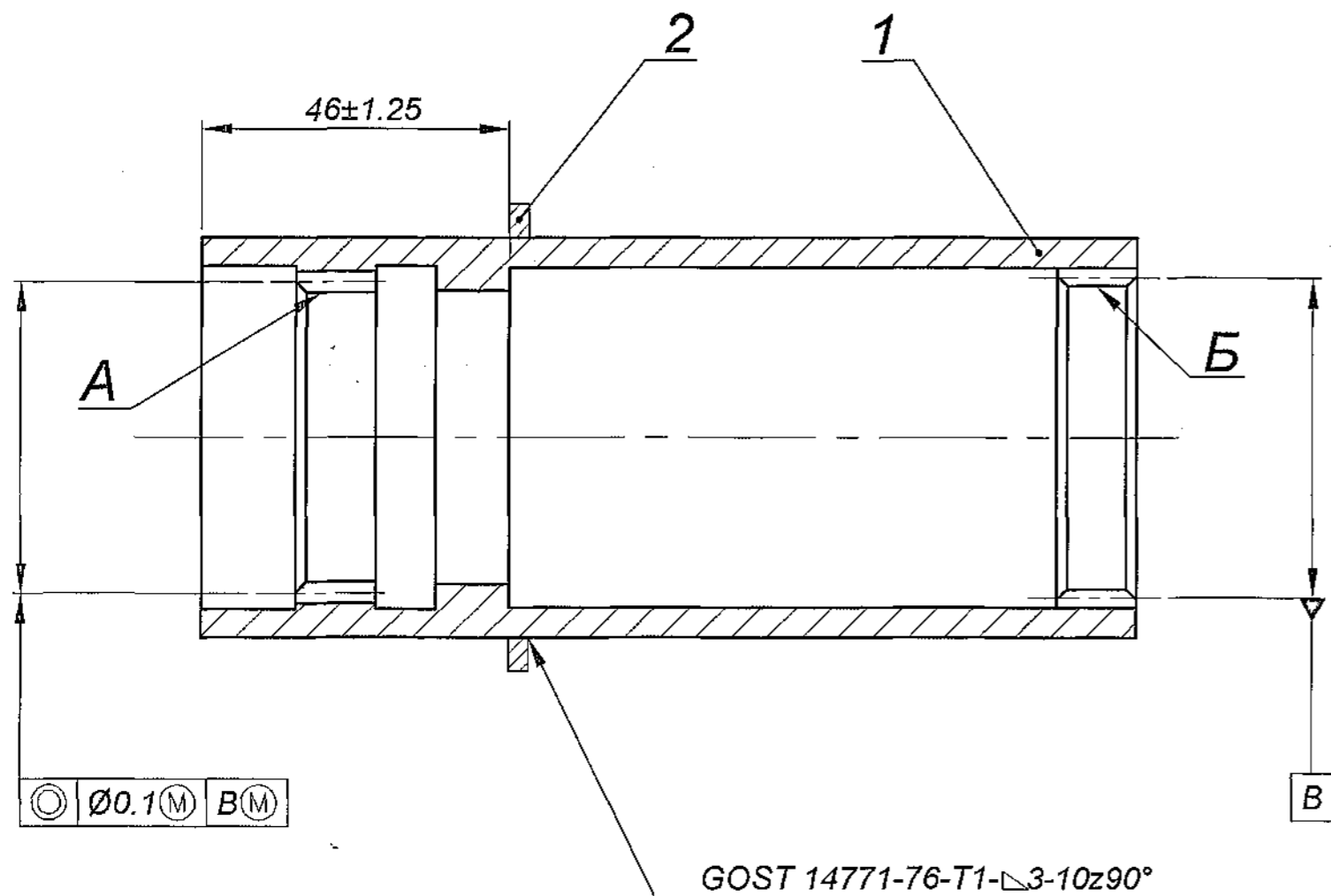
**Cb.3334-10-8**

SIZE A4

USED ON	ITEM No.	DRAWING NUMBER	D S CAT NUMBER	DESCRIPTION	QTY	REMARKS	
I/L CREATED BASED ON RUSSIAN ORIGINAL ISSUE - 1 I/L REPLACES Cb3334-06-3 VIDE NOTN. NO: 92-238  Cb. 3334-10-8		Cb.3334-06-6		SUB ASSY HOUSING			
		ITEM LIST		DRIVE COUPLING			
	1	3334-46-6		HOUSING COUPLING	1		
	2	3334-144-1		RING	1		
		ISSUE	DATE	NATURE OF AMENDMENTS	ISSUE	DATE	NATURE OF AMENDMENTS
	F - 157 46/69	DRN	<i>[Signature]</i>	CONTROLLERATE OF QUALITY ASSURANCE (HEAVY VEHICLES) AVADI.			
		CHD	<i>[Signature]</i>	TITLE :			
	APPD	<i>[Signature]</i>	SUB ASSY HOUSING DRIVE COUPLING				
	DATE	29.01.08	SHT. NO. 1 OF 1	D S CAT NUMBER	ITEM LIST FOR Cb.3334-06-6		

DRAWING NUMBER  
**Cb.3334-06-6**

SHEET No. 1 OF 1



1. The minimum nitration for Toothed ring should be  $h$  0.3...0.6 MM, 72 HRA. It is allowed to Nitrate around the circle.
2. Coating: Chemically oxidised, oiled as per instruction ИЛ-681-87. Coating is not carried out while nitrating with circle.

GEAR TOOTHING	-	A	B
MODULE	$m$	1.5	1.5
NUMBER OF TEETH	$Z$	31	32
SLOPE	$\beta$	5°47'	-
DIRECTION OF TOOTH LENGTH	-	LEFT	-
BASIC RACK	ANGLE OF PROFILE	$\alpha$	20°
	CO-EFFICIENT OF ADDENDUM	$f'$	0.8
	CO-EFFICIENT OF DEDENDUM	$f''$	1
	TOOTH THICKNESS ALONG THE PITCH LINE	$S_{cp}$	2.356
ADDENDUM MODIFICATION	$X_m$	0	0
WIDTH OF TOOTH SPACE	$e$	2.356 11H <sup>(+0.125 +0.045)</sup>	2.356 11H <sup>(+0.125 +0.045)</sup>
REFERENCE DIAMETER	$d$	46.74	48
DIAMETER OF ROLLERS	$D_m$	2.595	2.595
DISTANCE OVER PINS	$M_i$	42.831 <sup>+0.448 +0.161</sup>	44.155 <sup>+0.447 +0.161</sup>
BASIC (total)	$E_i$	0	0
DEVIATION OF TOOTH THICKNESS			

DRG. INDIANISED BASED ON RUSSIAN ORIGINAL ISSUE - 3  
DRG. REPLACES Cb 3334-06-3 VIDE NOTN. NO: 92-238

◎ 0.1(M) B(M)

GOST 14771-76-T1-3-10z90°

PILOT SAMPLE SHOULD BE APPROVED BY A H S P BEFORE BULK PRODUCTION.

EST. WT. (kg) 0.789 TO BE STAMPED OR MARKED WHERE INDICATED THUS # ( LETTERS)

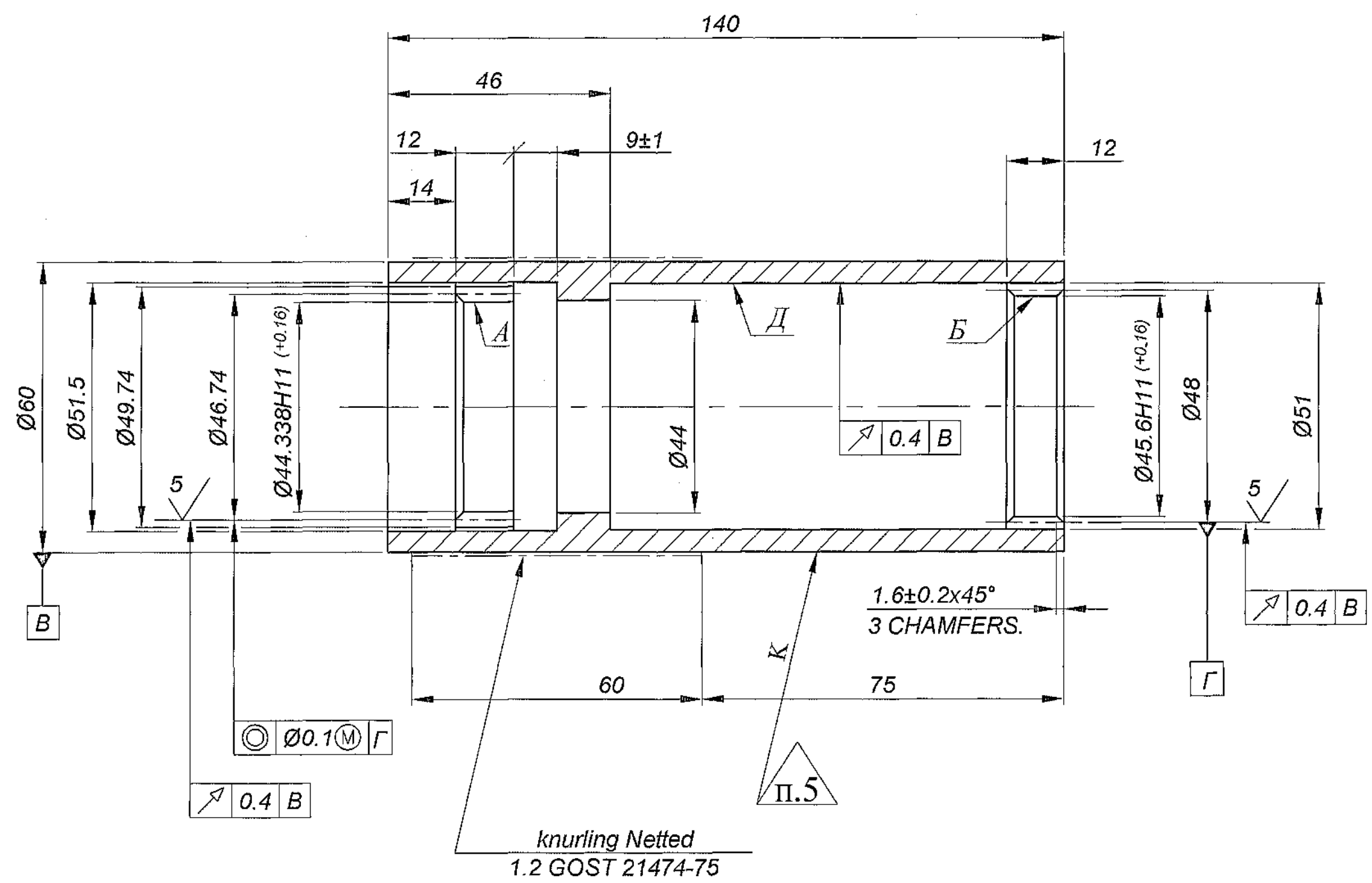
ALL SHARP EDGES AND CORNERS TO BE REMOVED UNLESS OTHERWISE STATED MACHINED CORNERS TO HAVE R OUT-SIDE R INSIDE EQUIVALENT CHAMFERS ARE PERMISSIBLE.

DRN	CHD	APPD	DATE	SCALE:- 1:1	DIMENSIONS IN mm	TOLERANCE ON DIMNS UNLESS OTHERWISE STATED IS : 2102 - 69	ALL THREADS TO CONFORM TO	MATERIAL :-	USED ON :- Cb 3334-10-8
			29.01.08						
					CONTROLLERATE OF QUALITY ASSURANCE (HEAVY VEHICLES) AVADI				
					TITLE :- SUB ASSY HOUSING DRIVE COUPLING				
					D S CAT NUMBER		DRAWING NUMBER Cb.3334-06-6		
ISSUE	DATE	NATURE OF AMENDMENTS							

F-157  
47  
69

SIZE A4 x 3

10 ✓ (✓)



1. Inspection group III as per TT-11.
2. 255...302 HB.
3. Unspecified limit deviations of dimensions : Holes H14, Shafts h14, Remaining -  $\pm \frac{IT14}{2}$ .
4. Unspecified tolerance of surface layout should be as per GOST 25069-81.
5. Stamp by electro-sparking method.
6. Preparation of gear tothing A and B is permitted in assembly unit.
7. Tool traces are permitted on the surface 'Д'.

GEAR TOOTHING	-	A	B
MODULE	m	1.5	1.5
NUMBER OF TEETH	Z	31	32
SLOPE	$\beta$	5°47'	-
DIRECTION OF TOOTH LENGTH	-	LEFT	-
BASIC RACK	ANGLE OF PROFILE	$\alpha$	20°
	CO-EFFICIENT OF ADDENDUM	f	0.8
	CO-EFFICIENT OF DEDENDUM	f''	1
	TOOTH THICKNESS ALONG THE PITCH LINE	S <sub>CP</sub>	2.356
ADDENDUM MODIFICATION	X <sub>m</sub>	0	0
WIDTH OF TOOTH SPACE	e	2.356 11H <sup>(+0.125 +0.045)</sup>	2.356 11H <sup>(+0.125 +0.045)</sup>
REFERENCE DIAMETER	d	46.74	48
DIAMETER OF ROLLERS	D <sub>m</sub>	2.595	2.595
DISTANCE OVER PINS	M <sub>i</sub>	42.831 <sup>+0.448 +0.161</sup>	44.155 <sup>+0.447 +0.161</sup>
BASIC(TOTAL) DEVIATION OF TOOTH THICKNESS	E <sub>I</sub>	0	0

DRG. INDIANISED BASED ON RUSSIAN ORIGINAL ISSUE - 9  
DRG. REPLACES 3334-46-5 VIDE NOTN. NO: 92-238

F-157  
59  
69  
SIZE A4 x 4

PILOT SAMPLE SHOULD BE APPROVED BY A H S P BEFORE BULK PRODUCTION.

EST. WT. (kg)	TO BE STAMPED OR MARKED WHERE INDICATED THUS # ( LETTERS)
0.765	
ALL SHARP EDGES AND CORNERS TO BE REMOVED UNLESS OTHERWISE STATED MACHINED CORNERS TO HAVE R OUT-SIDE R INSIDE EQUIVALENT CHAMFERS ARE PERMISSIBLE.	

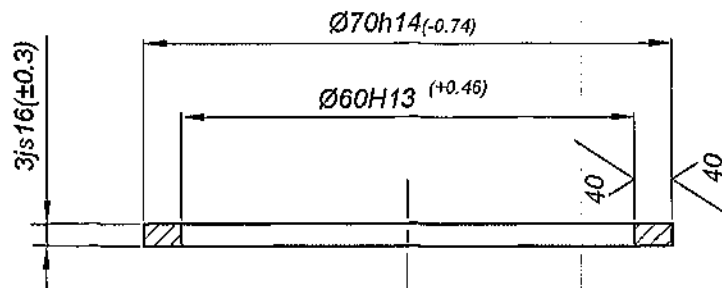
DRN	CHD	APPD	DATE	SCALE:- 1:1	DIMENSIONS IN mm	TOLERANCE ON DIMNS UNLESS OTHERWISE STATED IS : 2102 - 69	ALL THREADS TO CONFORM TO	D S CAT NUMBER	DRAWING NUMBER
			29.01.08						3334-46-6
MATERIAL :- STEEL 38XC GOST 4543-71				USED ON :- Cb 3334-06-6		CONTROLLERATE OF QUALITY ASSURANCE (HEAVY VEHICLES) AVADI			
TITLE :- HOUSING COUPLING									
ISSUE		DATE		NATURE OF AMENDMENTS					

DRAWING NUMBER

**3334-144-1**

SHEET No. 1 OF 1

20



1. Alternate material: Steel 20 GOST 1050-88.

2. Surface roughness of lateral surface  $S\sqrt{}$  is permitted.

DRG. INDIANISED BASED ON RUSSIAN ORIGINAL ISSUE - 5  
DRG. REPLACES 3334-144 VIDE NOTN. NO: 92-238

F-157

61  
69

PILOT SAMPLE SHOULD BE APPROVED BY A H S P BEFORE BULK PRODUCTION.

EST. WT.

**0.024 Kg**

TO BE STAMPED OR MARKED WHERE  
INDICATED THUS # ( LETTERS)

ALL SHARP EDGES AND CORNERS TO BE REMOVED UNLESS  
OTHERWISE STATED MACHINED CORNERS TO HAVE R OUT-  
SIDE R INSIDE EQUIVALENT CHAMFERS ARE PERMISSIBLE.

MATERIAL :-

STEEL 10 GOST 1050-88

USED ON :-

CB 3334-06-6

ISSUE DATE

NATURE OF AMENDMENTS

DRN

SCALE :- 1:1

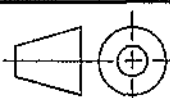
CONTROLLERATE OF QUALITY ASSURANCE (HEAVY VEHICLES)

DIMENSIONS IN mm

AVADI

CHD

TOLERANCE ON DIMENSIONS  
UNLESS OTHERWISE STATED  
IS : 2102 - 69



TITLE :-

**RING**

APPD

DATE

29.01.08

ALL THREADS TO  
CONFORM TO

D S CAT NUMBER

DRAWING NUMBER

**3334-144-1**

SIZE A4

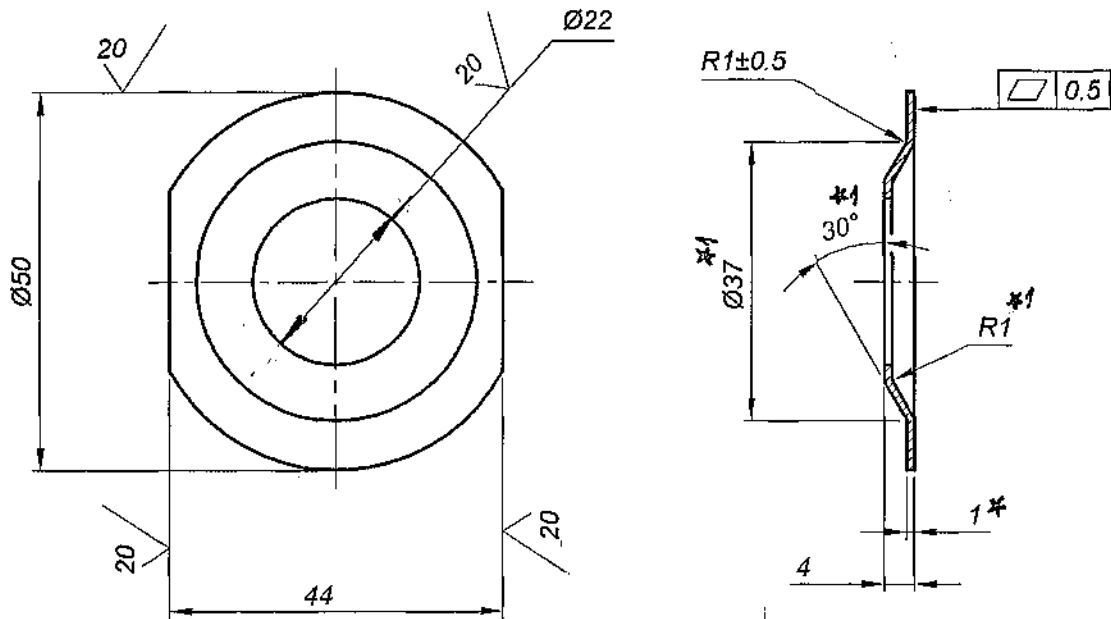
DRAWING NUMBER  
**3334-20-2**

SHEET No. 1 OF 1



DRG. INDIANISED BASED ON RUSSIAN ORIGINAL ISSUE - 3  
 DRG. REPLACES 3334-20-1 VIDE NOTN. NO: 92-238

F-157  
 56  
 69



1. Unspecified limit deviations of dimensions should be  $\pm 0.5$  mm.
2. Coating Zn 15 microns thick, 1 micron thick Chromium should be as per instruction ИП-749-88.
3. \* Dimensions for reference.
4. \*1 Dimensions should be ensured by tool.

PILOT SAMPLE SHOULD BE APPROVED BY A H S P BEFORE BULK PRODUCTION.

EST. WT.  
**0.018 Kg**

TO BE STAMPED OR MARKED WHERE INDICATED THUS # ( LETTERS)

**ALL SHARP EDGES AND CORNERS TO BE REMOVED UNLESS OTHERWISE STATED MACHINED CORNERS TO HAVE R OUT-SIDE R INSIDE EQUIVALENT CHAMFERS ARE PERMISSIBLE.**

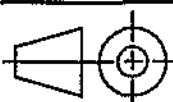
MATERIAL :- SHEET  
AT1 GOST 19904-90  
K270B6-II-F-10 GOST 16523-89

USED ON :-  
Cb 3334-10-8

ISSUE DATE NATURE OF AMENDMENTS

DRN SCALE :- 1:1  
DIMENSIONS IN mm

CHD  
APPD  
TOLERANCE ON DIMENSIONS UNLESS OTHERWISE STATED IS : 2102 - 69



TITLE :-

**SPRING DISC**

DATE ALL THREADS TO CONFORM TO

29.01.08

D S CAT NUMBER

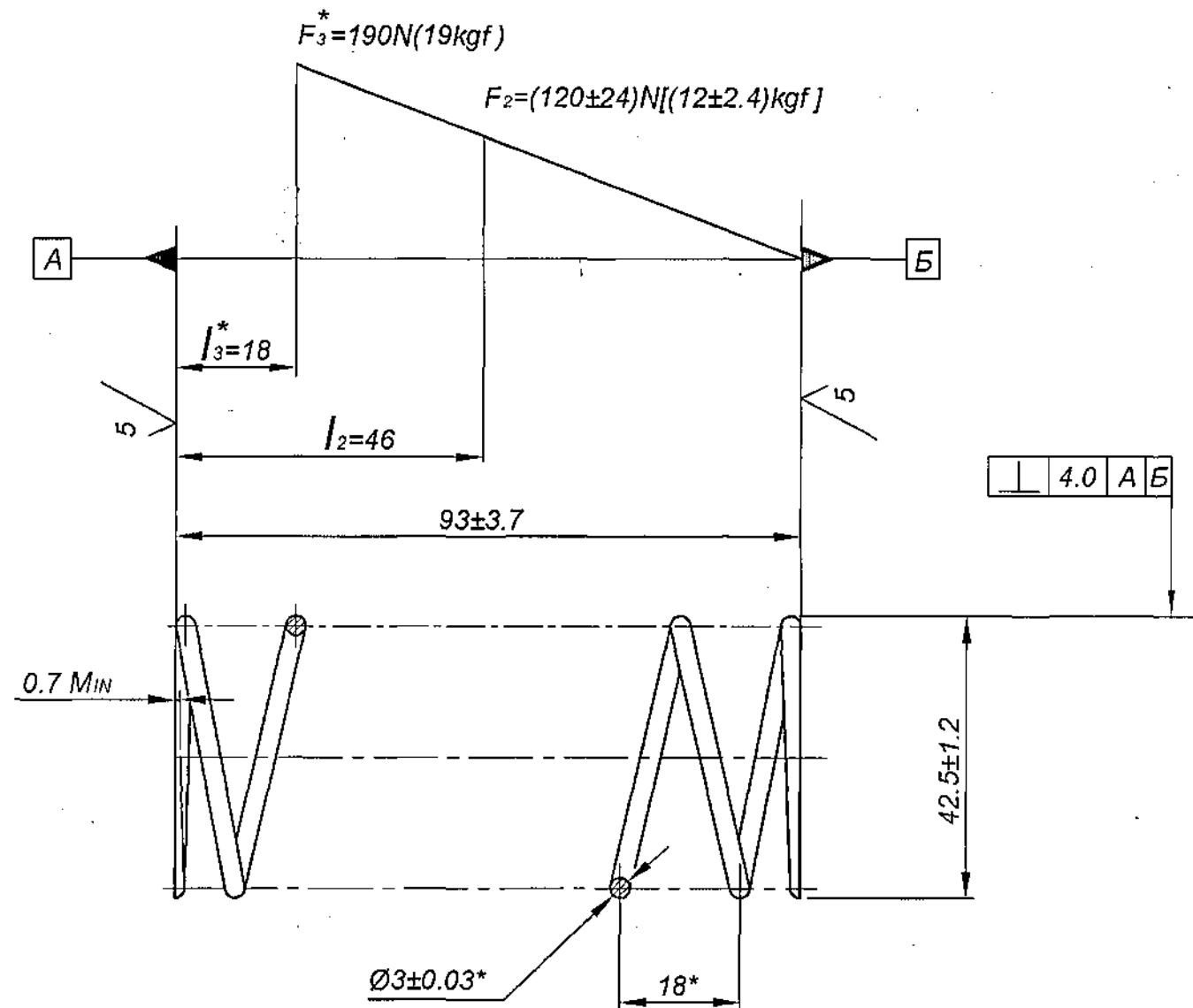
DRAWING NUMBER

**3334-20-2**

SIZE A4

DRAWING NUMBER  
**3334-21-3**

SHEET No. 1 OF 1



1. Direction of spring winding should be clockwise.
2.  $n = 5$ .
3.  $n1 = 6.5 \pm 0.5$ .
4. Coating: Chemically, oxidised, oiled as per instruction ИЛ-681-87.
5. \* Dimensions for reference.
6. Mark the designation of springs on the tag for the batch of parts.
7. Put final acceptance stamp on the tag for the batch of parts.
8. Base surface of supporting coil should not be less than 0.75 length of circumference.

DRG. INDIANISED BASED ON RUSSIAN ORIGINAL ISSUE - 5  
DRG. REPLACES 3334-21-2 VIDE NOTN. NO: 92-238

(5A) EQUIVALENT MATERIAL  
Gr. DH/DM IS: 4454-2001

PILOT SAMPLE SHOULD BE APPROVED BY A H S P BEFORE BULK PRODUCTION.

EST. WT. **0.05 Kg** TO BE STAMPED OR MARKED WHERE INDICATED THUS # ( LETTERS)

ALL SHARP EDGES AND CORNERS TO BE REMOVED UNLESS OTHERWISE STATED MACHINED CORNERS TO HAVE R OUT-SIDE R INSIDE EQUIVALENT CHAMFERS ARE PERMISSIBLE.

			DRN		MATERIAL :- WIRE 5-2-3 GOST 9389-75	USED ON :- Cb 3334-10-8
			CHD		CONTROLLERATE OF QUALITY ASSURANCE (HEAVY VEHICLES) AVADI	
			APPD			
			DATE	29.01.08	TITLE :- <b>SPRING</b>	
			SCALE:-	1:1		
			DIMENSIONS IN mm		D S CAT NUMBER	
			TOLERANCE ON DIMNS UNLESS OTHERWISE STATED IS : 2102 - 69			
			ALL THREADS TO CONFORM TO		DRAWING NUMBER <b>3334-21-3</b>	
			16-8-10	4 <sup>th</sup> Alt. Comm. Meeting Minutes Point No.13 Dt:26-10-09		
		5A	ISSUE	DATE	NATURE OF AMENDMENTS	

F-157  
57  
69  
SIZE A3