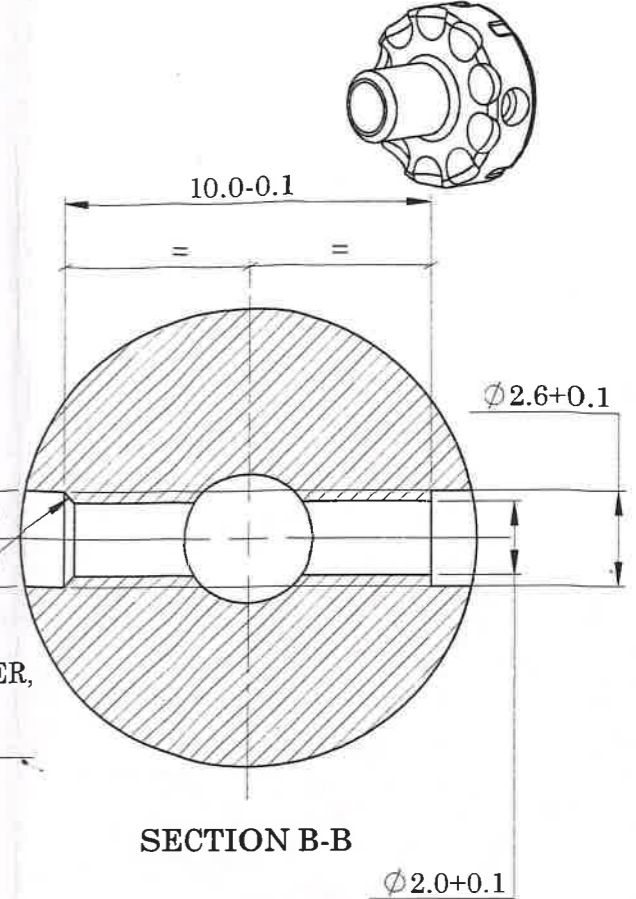
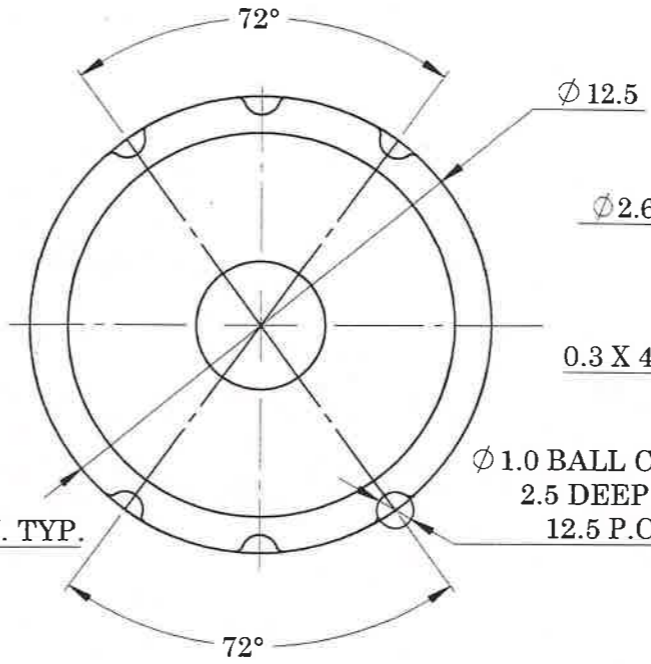
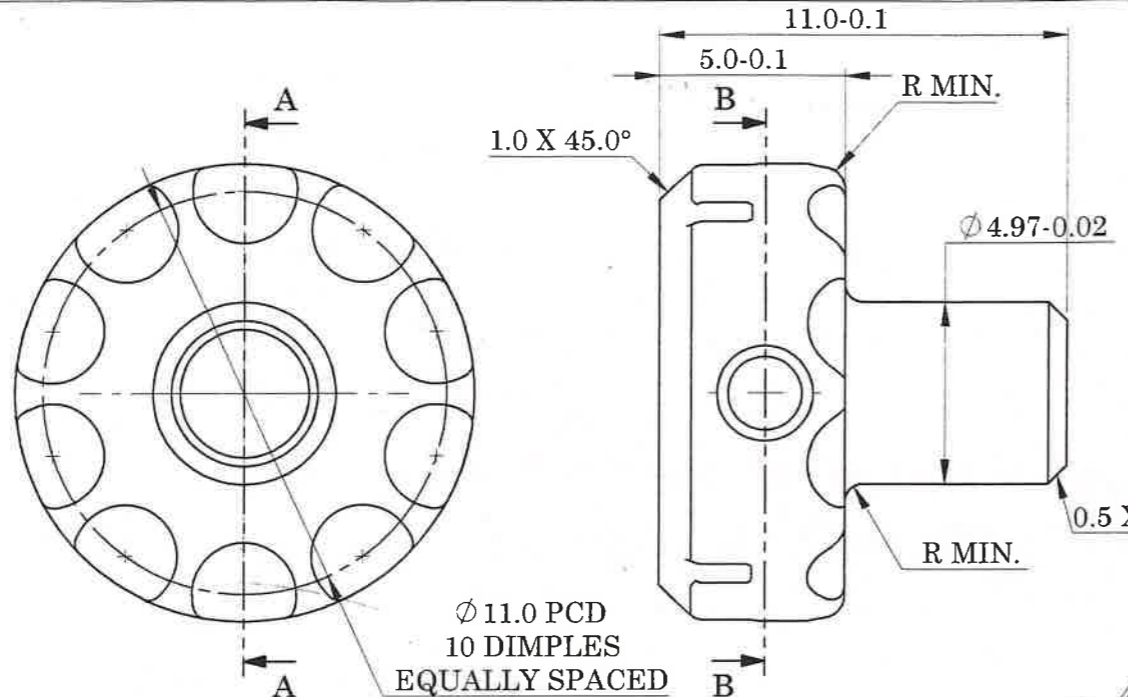


DRG No. 21017  
 IC SS S V VV O LSS  
 1 0 1 7 1 0 1 2 0 1 0 1 0 9 1 0 0 0 0 0

GENERAL TOL. : FINE / MEDIUM / COARSE CLASS TO IS: 2102  
 DRG. CONVENTIONS CONFIRM TO INDIAN STANDARDS DIMENSIONS ARE IN mm UNLESS OTHERWISE STATED.



CONTROLLED COPY No.: 01

NOTE:  
 1. REMOVE ALL SHARP EDGES AND BURRS.  
 2. ANGULAR TOLERANCE IS 30' OR OTHERWISE STATED.  
 3. DIMENSIONS ARE TO BE READ AFTER APPLYING PROTECTIVE FINISH.  
 4. IF THE COMPONENT IS TO BE MANUFACTURED THROUGH MIM ROUTE, REFER ARDE SPECN No: DRDO-ARDE-MIM-TSP-051-2019.  
 5. MATERIAL: ALUMINIUM ALLOY TO DTD 5124 OR IS: 733:1983 Gd76528 OR ASTM B 221M-0.5 AL 7075 TEMPER T6511  
 6. BLACK HARD ANODIC COATING TO IS 6057:1988 COATING THICKNESS - 0.050-0.075 mm. COATING HARDNESS - 400-450 HV IS 5523 ANODIC COATING TESTING  
 7. SURFACE FINISH  $\nabla \nabla$  ALL OVER UNLESS OTHERWISE SPECIFIED.

Sr. No.	DATE	AUTHORITY	BRIEF RECORD	ZONE	CD SIGN	GO SIGN
DRN: AKASH SIGN: DATE: 24/08/2022		<i>Prakash</i> CHECKED	MATERIAL: SEE NOTES			
APPD. DATE: 24/08/2022		<i>Kumar</i> FOR DIRECTOR	PROTECTIVE FINISH: SEE NOTES			
SEALED DATE:			TITLE: WHEEL REAR SIGHT			
SHEET SIZE: A3 SCALE: 5:1		EST. MASS 4.17 gm				
DESIGN AUTHORITY ARDE PUNE 411021						
DRG No. 21017	01	02	01	05	016	00DA
9 mm	PART No.	DS CAT No.	IC	SS	S	AA
			A	A	C	SST