

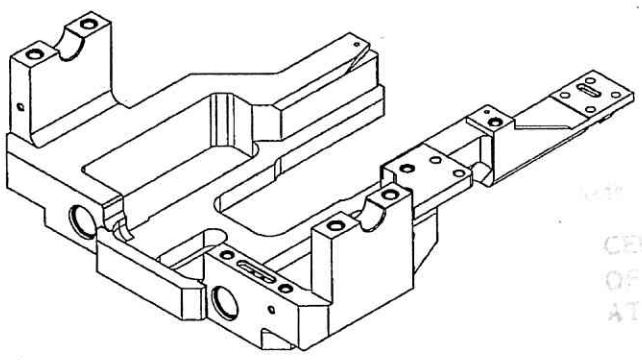
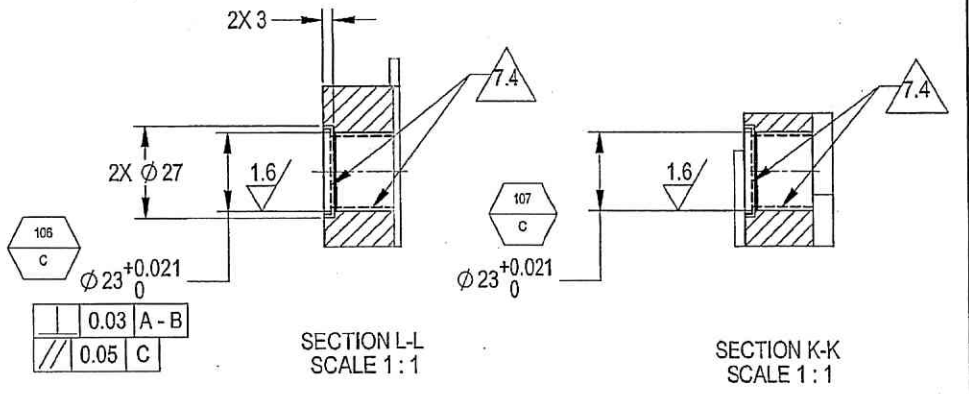
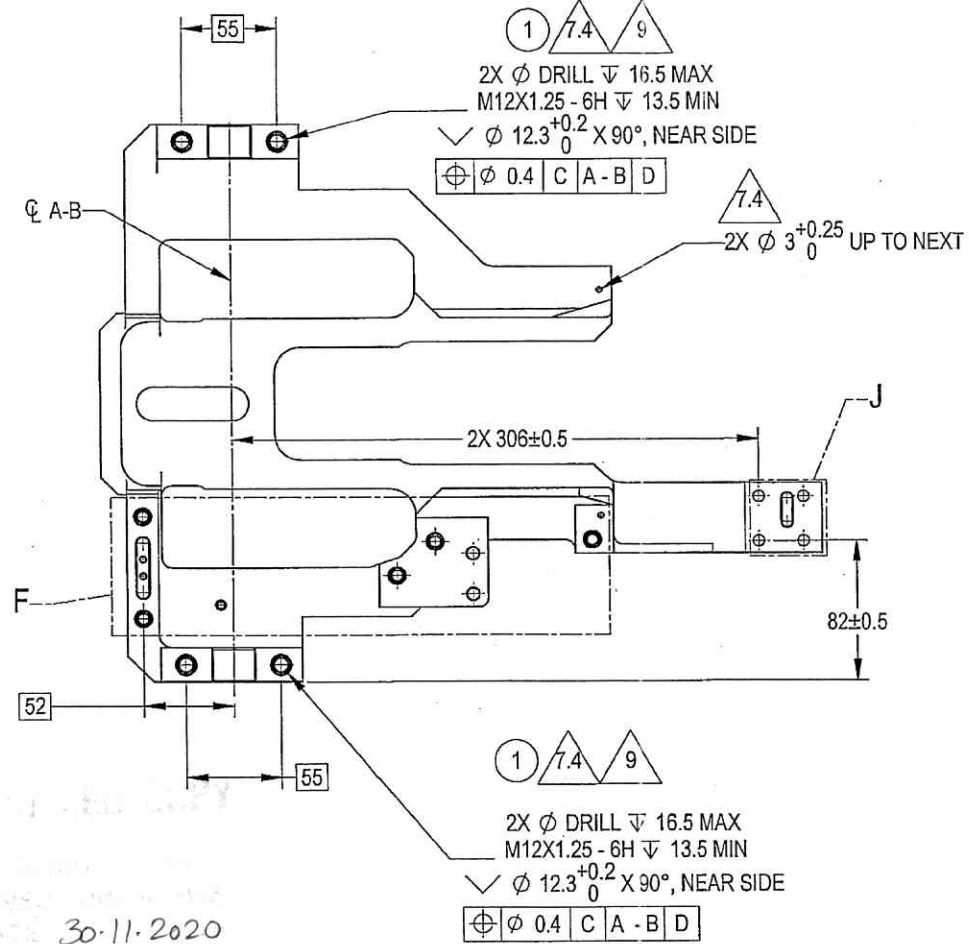
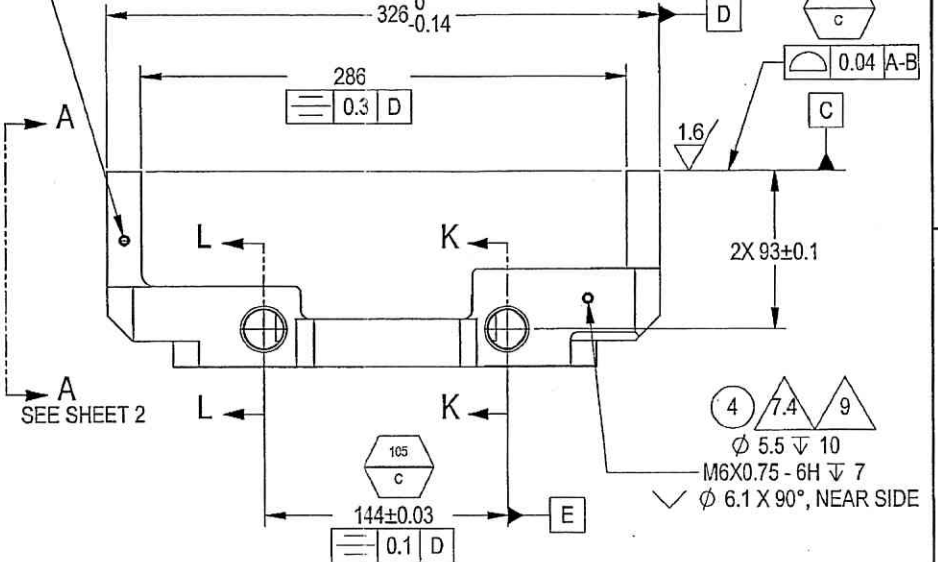
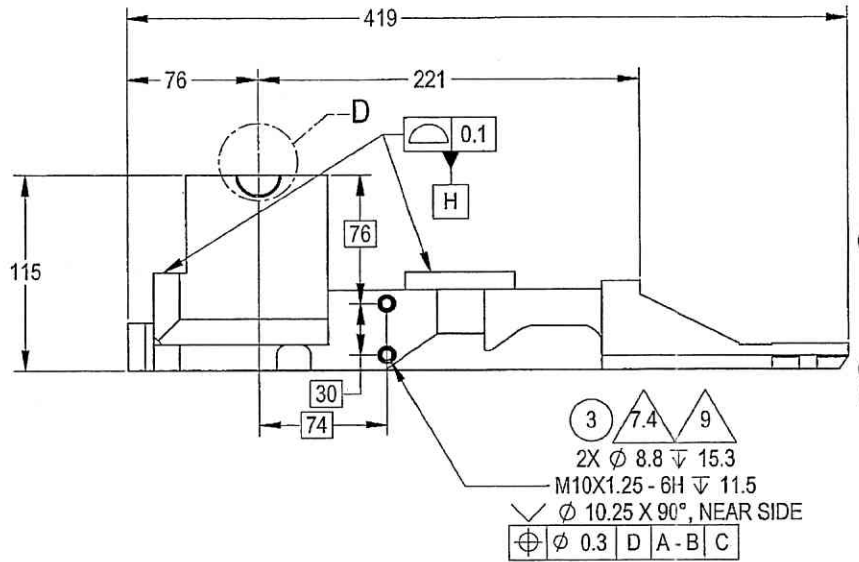
7490312402, 41864

THIS DOCUMENT AND THE INFORMATION CONTAINED IN IT ARE PROPRIETARY AND CONFIDENTIAL TO OFT. NO PERSON OR ENTITY IS ALLOWED TO COPY, REPRINT, REPRODUCE OR PUBLISH ANY PART OF THIS DOCUMENT, NOR DISCLOSE ITS CONTENTS TO OTHERS, NOR MAKE ANY USE OF IT, NOR ALLOW OR ASSIST OTHERS TO MAKE ANY USE OF IT UNLESS BY THE PRIOR WRITTEN EXPRESS AUTHORIZATION OF OFT AND THEN ONLY TO THE EXTENT AUTHORIZED. COPYRIGHT-OFT.

SHEET REV STATUS
ALL SHEETS ARE THE SAME REVISION

DWC Y17321A-00		REVISION RECORD		
REV	ECO	DESCRIPTION	DATE	APVD
01		Freeze	24-Oct-17	E. Reshaf
02		Freeze	14-Nov-17	Y. Shapira
03	2 Rework	Freeze	01-Jan-18	Y. Shapira
04		Freeze	27-Feb-18	G. Yampolsky
-	100003	Identical To Previous	08-Apr-18	L. Goldstein

- NOTES:
- INTERPRET THIS DRAWING IAW ASME Y14.100M.
 - MATERIAL: ALUM. ALLOY PLATE 6061-T651 PER AMS-QQ-A-250/11.
 - UNLESS OTHERWISE SPECIFIED, UNDEFINED MACHINED FILLET RADII SHALL BE 0.3 MAX.
 - DEBURR AND REMOVE SHARP EDGES, APPROX. 0.2X45 Deg.
 - ALL DIMENSIONS ARE BEFORE COATING, EXCLUDING DEFINED.
 - GENERAL TOLERANCES ACCORDING TO ISO 2768-m.
 - FINISH:
 - CHEMICAL CONVERSION COATING PER MIL-DTL-5541F TYPE I CLASS 3.
 - ANODIC COATING PER MIL-A-8625 TYPE II 15 TO 25 MICRON THICK CLASS 1.
 - A DRY FILM LUBRICATION IN A FLUOROPOLYMER ORGANIC RESIN SOLVENT COLOR BLACK CLASS 1 TYPE 2, 25-35 MICRON THICK PER VS-1-3-1-165 (OR EQUIVALENT).
 - PROTECT MARKED AREA (—), THREADS AND DEFINED HOLES AGAINST ANODIC COATING.
 - AREAS MARKED BY , SPECIFIED THREADS AND HOLES MUST BE PROTECTED FROM BLACK-T.
 - PARENTHETICAL FIGURES ARE FOR REFERENCE ONLY.
 - INSTALL INSERTS F/N 1, 3, 4 AFTER FINISH IAW MS51830 USING PRIMER PER MIL-PRF-23377 TYPE I CLASS C2.
 - INSTALL INSERTS F/N 2, AFTER FINISH PER MS33537 USING PRIMER EPOXY PER MIL-P-53022.
 - QUALITY ASSURANCE PROVISIONS:
 - QUALITY ASSURANCE PROVISIONS FOR THIS ITEM PER RDMQD00012P.
 - MAJOR CHARACTERISTICS NRS 101 TO 110.
 - PACKAGING AND PACKING: THE FINISHED PART SHALL BE PRESERVED AND PACKAGED IN ACCORDANCE WITH MANUFACTURER'S BEST COMMERCIAL PRACTICE.
 - IDENTIFY PER MIL-STD-130 PARA 4.1.B, BY LABELING ITS CONTAINER WITH THE PART NUMBER. CHARACTERS 3.2 MM HIGH.



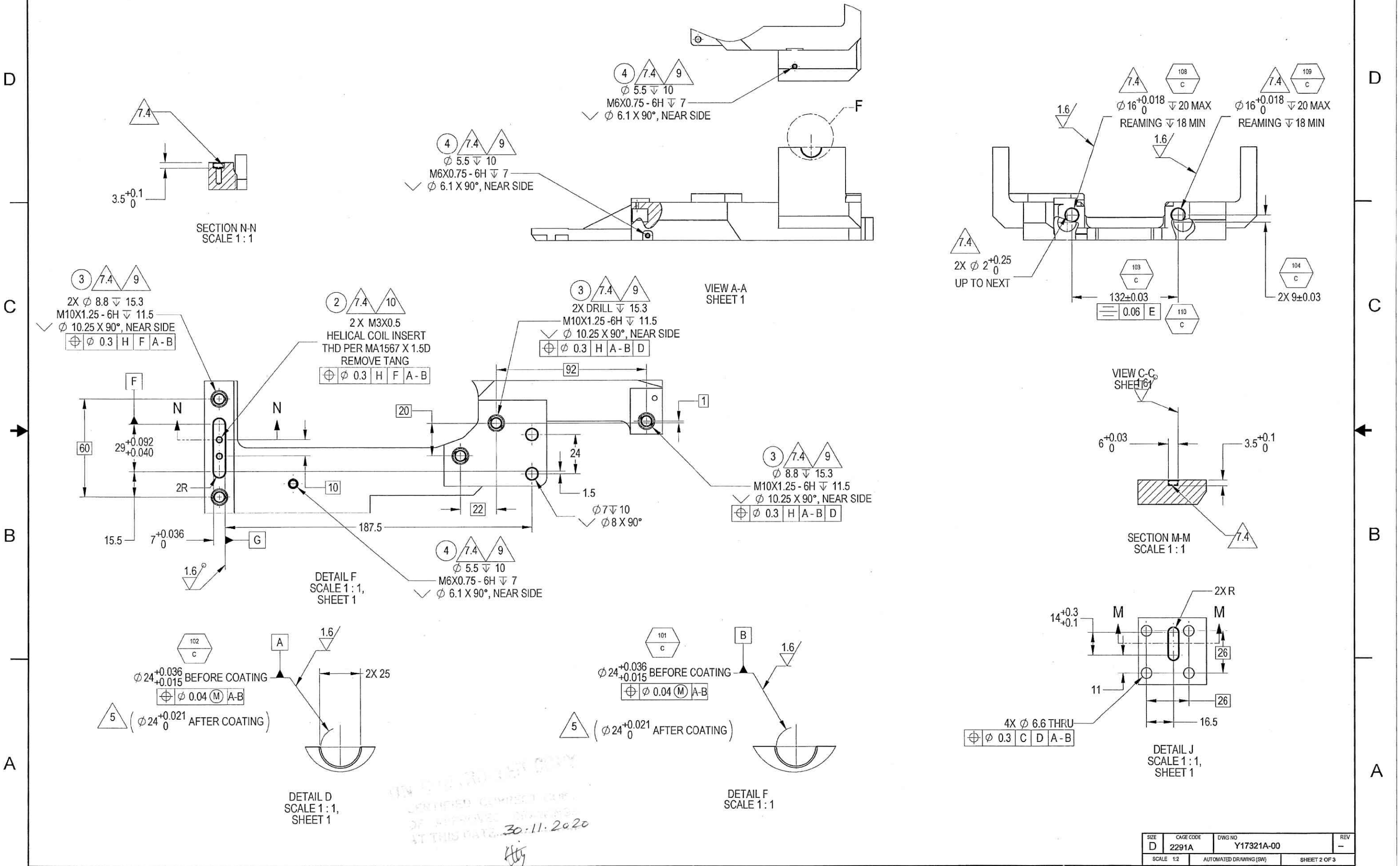
CERTIFIED COPY OF APPROVED DRAWING AT THIS DATE 30-11-2020

3.2 / 1.6

SEE SEPARATE PARTS LIST SEE ATTACHED MEDIA

UNLESS OTHERWISE SPECIFIED		SIGNATURE	DATE	ORDNANCE FACTORY TIRUCHIRAPPALLI	
DIMENSIONS ARE IN MM PER ASME Y14.5 - 2009		<i>[Signature]</i>	<i>[Date]</i>	FOR: CRADLE BASE ASSY	
TOLERANCES		CHECKED		CRADLE BASE	
LINEAR	ANGULAR	HOS/DDO		OF: 12.7MM SRCG	
SEE NOTE 6	SEE NOTE 6	OFFICER/PRODN		SIZE	CAGE CODE
1st ANGLE PROJECTION		OFFICER/OC		D	2291A
		OFFICER/DDO		DWG NO	Y17321A-00
PROJECT OFFICER	SURFACE TEXTURE IN MICROMETER			SCALE	1:2
				AUTOMATED DRAWING (SW)	
					SHEET 1 OF 3

Design of the cradle base



UNCLASSIFIED
 IDENTIFIED CONTROL COPY
 OF APPROVED DRAWINGS
 AT THIS DATE... 30-11-2020
 Htg

SIZE	CAGE CODE	DWG NO	REV
D	2291A	Y17321A-00	-
SCALE 1:2		AUTOMATED DRAWING (SW)	SHEET 2 OF 3

D

D

C

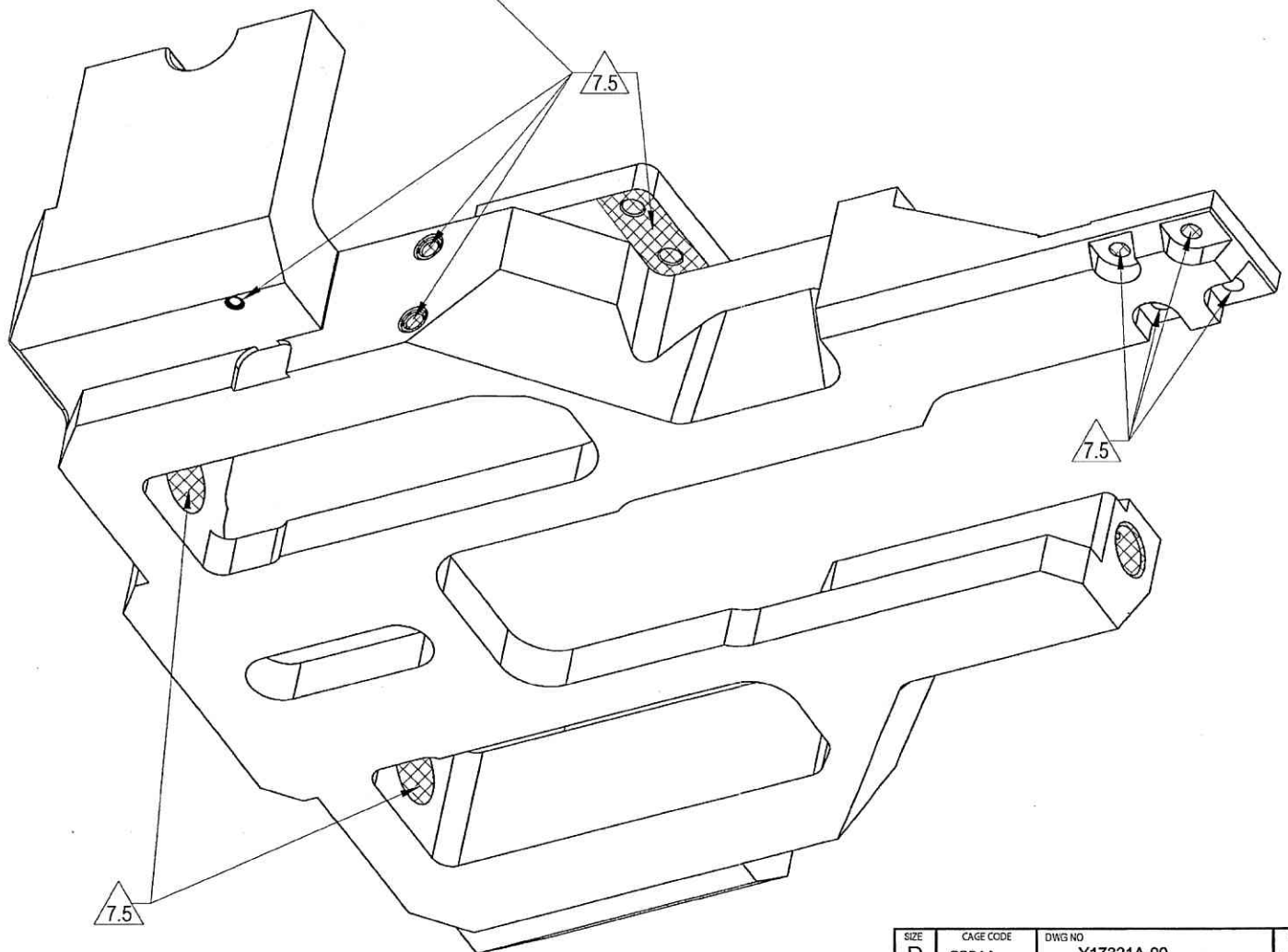
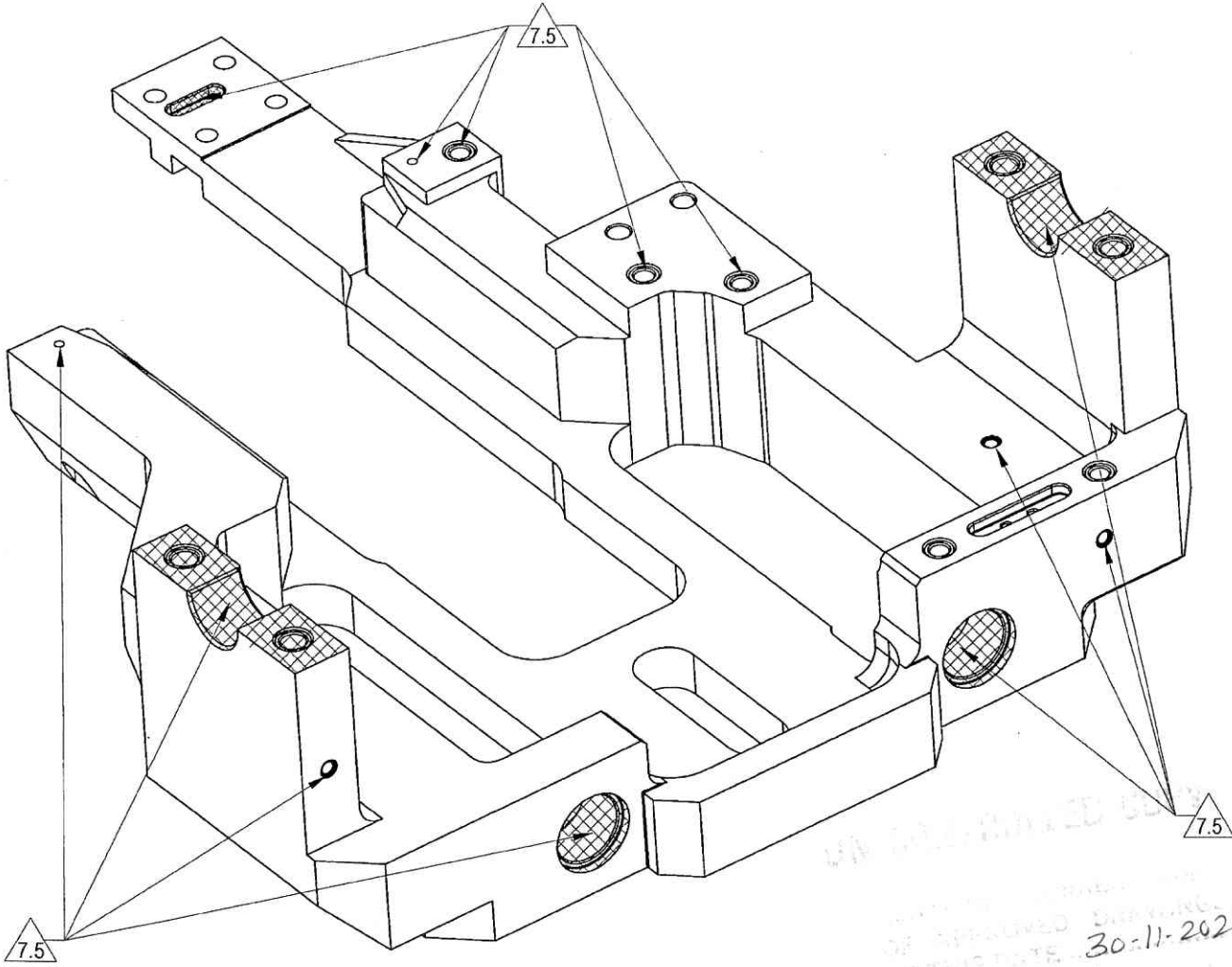
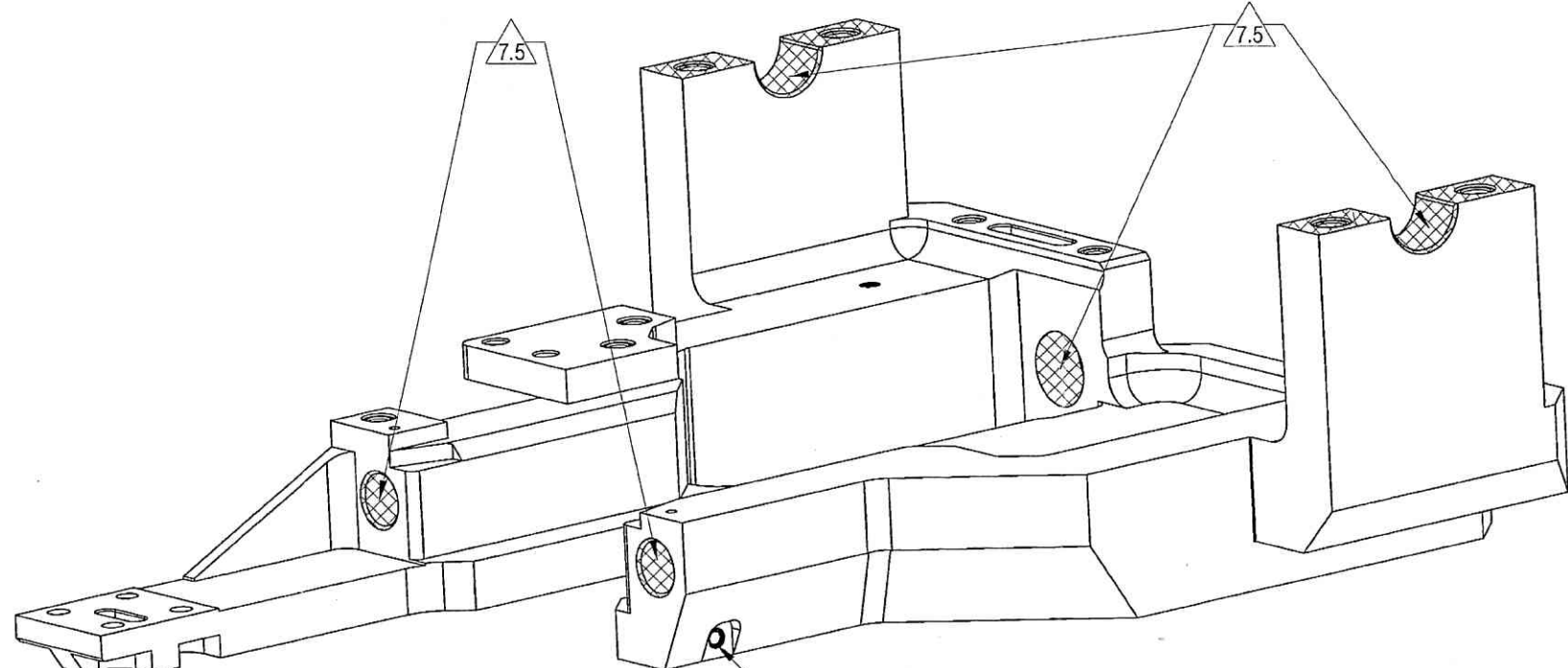
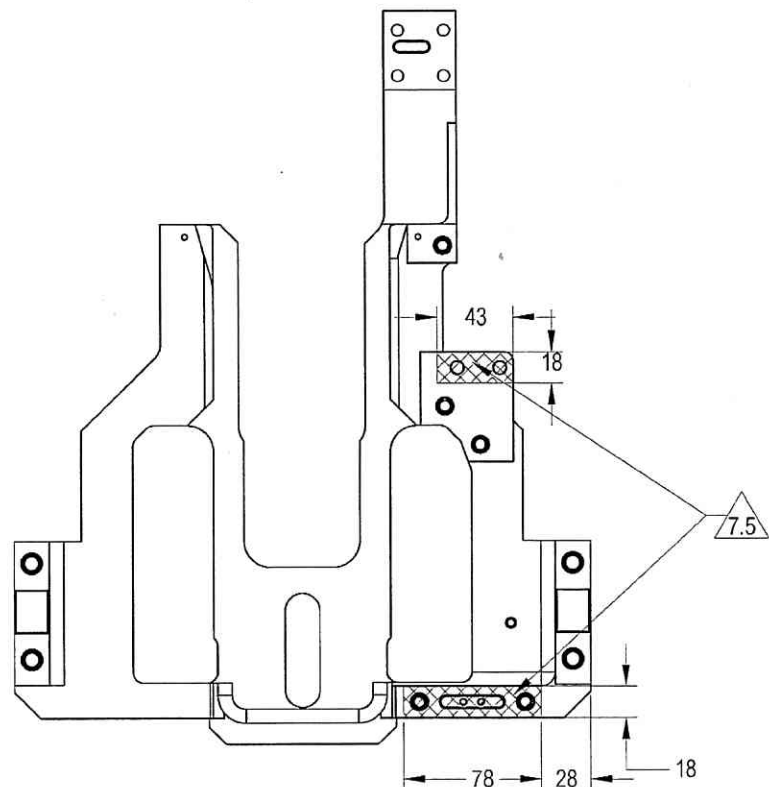
C

B

B

A

A



UN APPROVED COPY
 OF APPROVED DRAWING
 AT THIS DATE 30-11-2020
 PLM Control

SIZE	CAGE CODE	DWG NO	REV
D	2291A	Y17321A-00	-
SCALE 1:2	AUTOMATED DRAWING (SW)		SHEET 3 OF 3

OFT

ASSEMBLY PARTS LIST

Assembly Parts List For: Y17321A-00

Rev: -

Status: Released

Description: CRADLE BASE

FN	CMD	PART NUM	ECO	DESCRIPTION	MB	QTY	U/M	REF. DES./REMARKS	MFG. PN / CUSTOMER	LA	LI
1	HM	34265907M		INSERT CRES N/L M8X1.25	P	4	Each		60328-KNM8X1.25		
2	HM	99662213M		INSERT HCOIL CRES M3X1.5D	P	2	Each		60043-TNM3X0.5C-4.5(SEE NOTES)		
3	HM	34265901M		INSERT CRES N/L M6X10	P	7	Each		41571-215-066352		
4	HM	20001045L		INSERT CRES N/L M4X0.7	P	5	Each		51133-KNCM4X0.7		

UN CONTROLLED COPY
ISSUED CORRECT COPY
IF APPLICABLE
DATE 30-11-2020
[Signature]
Design & Drawing Office
C. Inoue Factory,
Tiruchirappalli-620018