

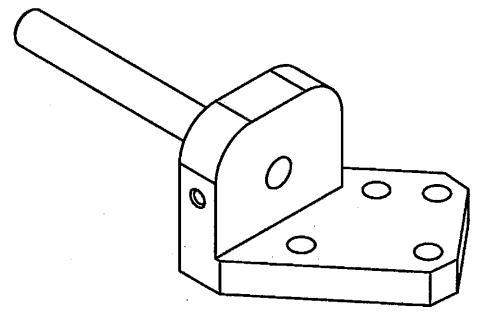
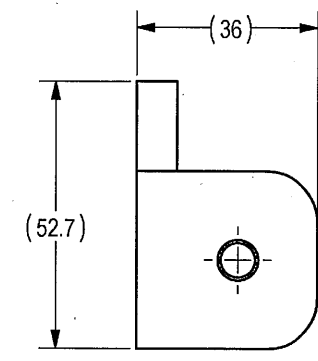
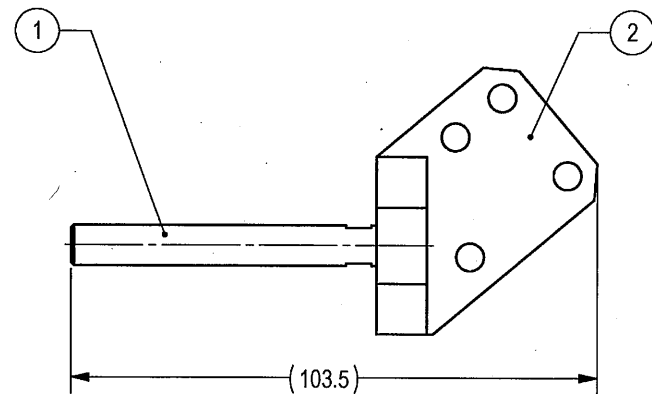
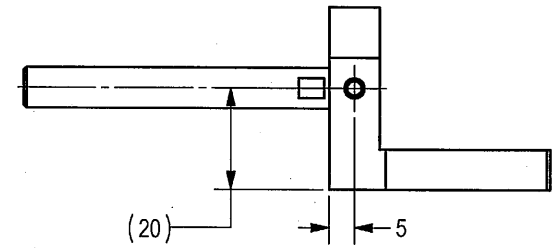
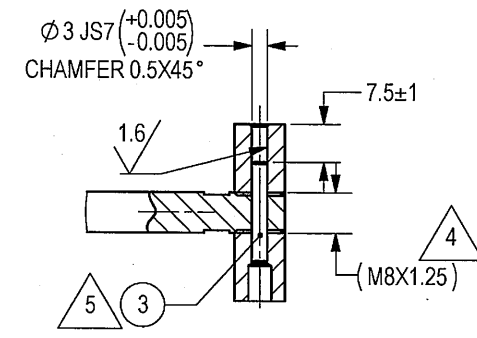
THIS DOCUMENT AND THE INFORMATION CONTAINED IN IT ARE PROPRIETARY AND CONFIDENTIAL TO OFT. NO PERSON OR ENTITY IS ALLOWED TO COPY, REPRINT, REPRODUCE OR PUBLISH ANY PART OF THIS DOCUMENT, NOR DISCLOSE ITS CONTENTS TO OTHERS, NOR MAKE ANY USE OF IT, NOR ALLOW OR ASSIST OTHERS TO MAKE ANY USE OF IT UNLESS BY THE PRIOR WRITTEN EXPRESS AUTHORIZATION OF OFT AND THEN ONLY TO THE EXTENT AUTHORIZED.
COPYRIGHT-OFT.

SHEET REV STATUS
ALL SHEETS ARE THE SAME REVISION

REVISION RECORD				
REV	ECO	DESCRIPTION	DATE	APVD
--	ZR0937/00	Released	26-Feb-19	Z. Rabayev

NOTES:

1. INTERPRET THIS DRAWING IAW ASME Y14.100M.
2. MATERIAL: SEE FN 1 AND FN 2
(BASE MATERIAL: CRES BAR TYPE 17-4PH AND STEEL ALLOY BAR SAE 4130 OR SAE 4340).
3. DEBURR AND REMOVE SHARP EDGES APPROX. 0.3X45°.
4. F/N 1 AND F/N 2 SHALL BE ASSEMBLED TOGETHER (USING M8X1.25 THREAD), BEFORE MACHINING. TIGHTEN F/N 1 WITH TORQUE OF 20Nm±5%.
5. USE F/N 100 TO SECURE ASSEMBLY.
6. QUALITY ASSURANCE PROVISIONS ANSI/ASQC Z1.4
ALL DIMENSIONS AND FINISH PER SQUEGLIA C=0 AQL 2.5%
KEY DIMENSIONS 100% INSPECTION (MARKED BY FLAG KEY)
VISUAL INSPECTION 100%.
7. PARENTHETICAL FIGURES ARE FOR REFERENCE ONLY.
8. PACKAGING AND PACKING:
THE FINISHED PART SHALL BE PRESERVED AND PACKAGED IN ACCORDANCE WITH MANUFACTURER'S BEST COMMERCIAL PRACTICE.
9. IDENTIFY PER MIL-STD-130 PARA 4.1.B, BY LABELING ITS CONTAINER WITH THE PART NUMBER. CHARACTERS MINIMUM TEXT HEIGHT 1.25 MM.



SEE ATTACHED MEDIA
SEE SEPARATE PARTS LIST

UNLESS OTHERWISE SPECIFIED		SIGNATURE	DATE	ORDNANCE FACTORY TIRUCHIRAPPALLI	
PROFILE: N/A	DRAWN		21/12/20	FOR: BELLEVILLE ASSY	
TOLERANCES		CHECKED		TITLE BRACKET ASSY 2	
LINEAR	ANGULAR	HOS/DDO	P. J. M. 21/12	OF: 12.7MM SRCG	
ISO-2768-c	ISO-2768-c	OFFICER/PRODN		SIZE	CAGE CODE
1st ANGLE PROJECTION		OFFICER/QC		C	2291A
PROJECT OFFICER		OFFICER/DDO	Dinesh 21/12	DWG NO	064595A-01
Approximate Weight	0.194 [kg]	SURFACE TEXTURE IN Micro Meter		SCALE	1:1
				AUTOMATED DRAWING (SW)	SHEET 1 OF 1

DWG NO 064595A-01
SH 1

OFT

ASSEMBLY PARTS LIST

Assembly Parts List For: 064595A-01

Rev: -

Status: Released

Description: BRACKET ASSY 2

FN	CMD	PART NUM	ECO	DESCRIPTION	MB	QTY	U/M	REF. DES./REMARKS	MFG. PN / CUSTOMER	LA	LI
1	MP	062341A-00		SHAFT, BELLEVILLE	M	1	Each				
2	MP	064597A-00		SUPPORT, BELLEVILLE	M	1	Each				
3	HO	00111359N		PIN DOWEL ST 3X20MM	P	1	Each		53113-DIN 6325-3M6X20		
100	YR	99962365M	ZR0937	ADHESIVE RETAINING	P	10.000	GM		52122-LOCTITE 635		

2

DWG NO 062341A-00

SH 1

1

SHEET REV RECORD

ALL SHEETS ARE THE SAME REVISION

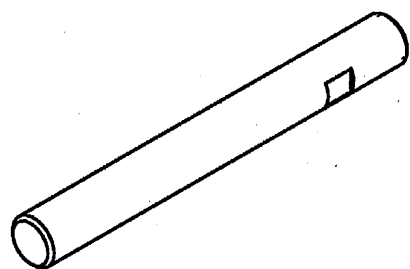
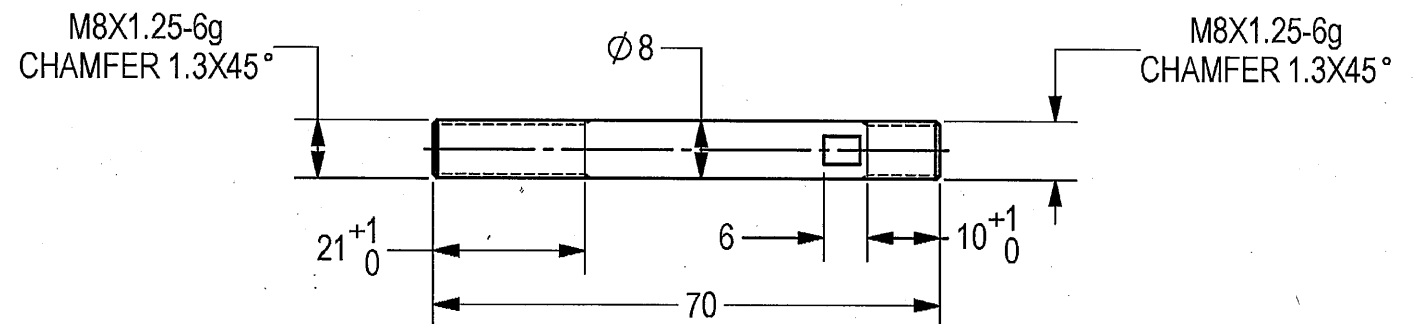
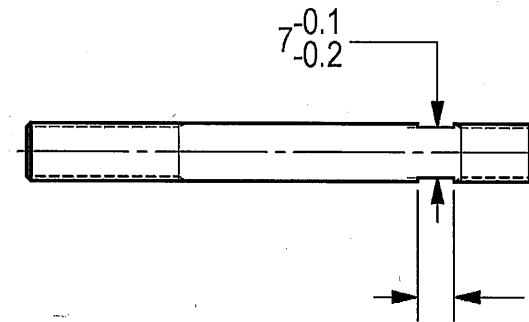
REVISION RECORD

REV	ECO	DESCRIPTION	DATE	APVD
01		Freeze	14-Jun-12	
02		Freeze	23-Nov-12	
03		Freeze	05-Jun-13	
04		Restricted	24-Dec-13	
--	T00064	Identical To Previous Released	09-Apr-18	L. Goldshtein

THIS DOCUMENT AND THE INFORMATION CONTAINED IN IT ARE PROPRIETARY AND CONFIDENTIAL TO OFT. NO PERSON OR ENTITY IS ALLOWED TO COPY, REPRINT, REPRODUCE OR PUBLISH ANY PART OF THIS DOCUMENT, NOR DISCLOSE ITS CONTENTS TO OTHERS, NOR MAKE ANY USE OF IT, NOR ALLOW OR ASSIST OTHERS TO MAKE ANY USE OF IT UNLESS BY THE PRIOR WRITTEN EXPRESS AUTHORIZATION OF OFT AND THEN ONLY TO THE EXTENT AUTHORIZED. COPYRIGHT-OFT.

NOTES:

1. INTERPRET THIS DRAWING IAW ASME Y14.100M.
2. MATERIAL: CRES BAR TYPE 17-4PH PER AMS 5643. (EQUIVALENT STEEL IS PERMITTED AFTER ELBIT APPROVAL).
3. HEAT TREATMENT TO H1150 PER MIL-H-6875 CLASS D.
4. DEBUR AND REMOVE SHARP EDGES APPROX. 0.3X45°.
5. PASSIVATION TREATMENT PER AMS-2700 METHOD 1 TYPE 8.
6. BAKE PART AFTER PLATING WITHIN 3 HOURS PER AMS-2759/9 TABLE 1 FOR 3 HOURS MINIMUM AT 191 °C.
7. QUALITY ASSURANCE PROVISIONS:
7.1 QUALITY ASSURANCE PROVISIONS FOR THIS ITEM PER RDMQD00012P.
8. PACKAGING AND PACKING:
THE FINISHED PART SHALL BE PRESERVED AND PACKAGED IN ACCORDANCE WITH COMMERCIAL PRACTICE.
9. IDENTIFY PER MIL-STD-130 PARA 4.1.B, BY LABELING ITS CONTAINER WITH THE PART NUMBER. CHARACTERS MINIMUM TEXT HEIGHT 1.25 MM.



(WEIGHT APPROX.: 0.033 Kg.)

SEE ATTACHED MEDIA

UNLESS OTHERWISE SPECIFIED		SIGNATURE	DATE	ORDNANCE FACTORY TIRUCHIRAPPALLI	
DIMENSIONS ARE IN MM PER ASME Y14.5M -1994		DRAWN	21/12		
TOLERANCES		CHECKED		TITLE	
LINEAR	ANGULAR	HOS/DDO	21/12	SHAFT, BELLEVILLE	
± 0.2	± 0.5°	OFFICER/PRODN		FOR: BRACKET ASSY 1 & 2	
1st ANGLE PROJECTION		OFFICER/QC		OF: 12.7MM SRCG	
SURFACE TEXTURE IN Micro M		OFFICER/DDO	21/12	SIZE	CAGE CODE
				B	2291A
PROJECT OFFICER				DWG NO	062341A-00
PLM Control				SCALE	1:1
				AUTOMATED DRAWING (SW)	
				SHEET 1 OF 1	

2

1

THIS DOCUMENT AND THE INFORMATION CONTAINED IN IT ARE PROPRIETARY AND CONFIDENTIAL TO OFT. NO PERSON OR ENTITY IS ALLOWED TO COPY, REPRINT, REPRODUCE OR PUBLISH ANY PART OF THIS DOCUMENT, NOR DISCLOSE ITS CONTENTS TO OTHERS, NOR MAKE ANY USE OF IT, NOR ALLOW OR ASSIST OTHERS TO MAKE ANY USE OF IT UNLESS BY THE PRIOR WRITTEN EXPRESS AUTHORIZATION OF OFT AND THEN ONLY TO THE EXTENT AUTHORIZED. COPYRIGHT-OFT.

SHEET REV RECORD

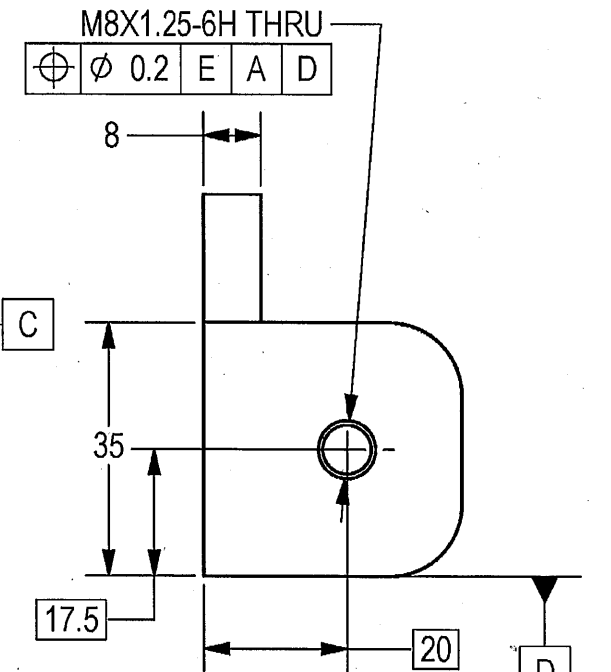
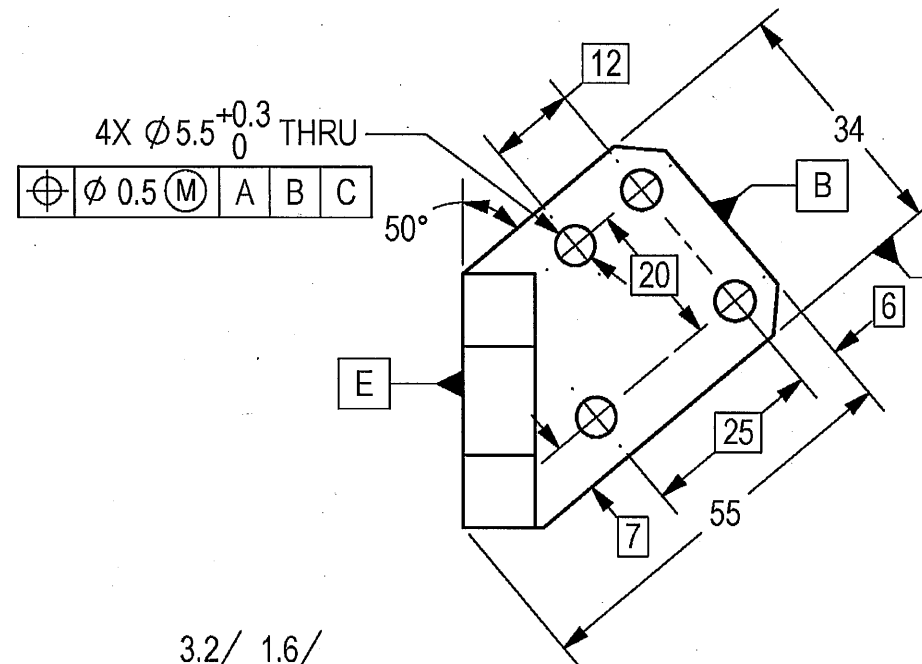
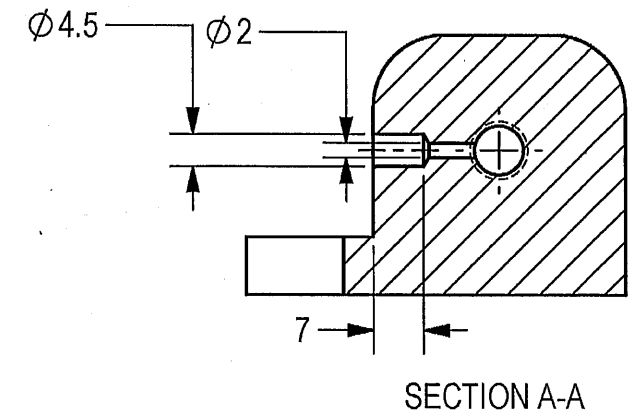
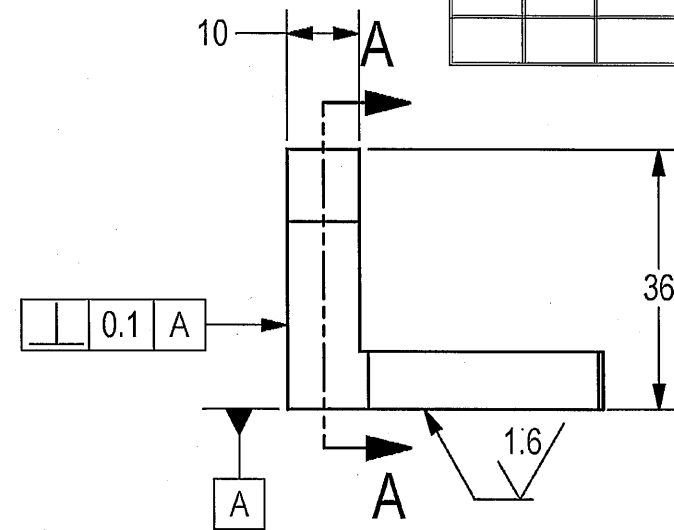
ALL SHEETS ARE THE SAME REVISION

REVISION RECORD

REV	ECO	DESCRIPTION	DATE	APVD
01		Freeze	11-Jul-12	
02		Restricted	30-Dec-13	
--	T00064	Identical To Previous Released	09-Apr-18	L. Goldshtein

NOTES:

1. INTERPRET THIS DRAWING IAW ASME Y14.100M.
2. MATERIAL: STEEL ALLOY BAR SAE 4130 PER SAE-AMS-S-6758 OR SAE 4340 PER SAE-AMS-S-5000. (EQUIVALENT MATERIAL IS PERMITTED AFTER ELBIT APPROVAL).
3. HEAT TREATMENT: QUENCH AND TEMPER ENTIRE PART; HARDNESS 35±4 HRC.
4. DEBURR AND REMOVE SHARP EDGES APPROX. 0.3X45°.
5. GENERAL TOLERANCES ACCORDING TO ISO 2768-m.
6. PHOSPHATE COATING TYPE M, CLASS 2, 0.005-0.010 MM THICK PER MIL-DTL-16232.
7. THE DIMENSIONS ARE BEFORE COATING.
8. QUALITY ASSURANCE PROVISIONS: 8.1 QUALITY ASSURANCE PROVISIONS FOR THIS ITEM PER RDMQD00012P.
9. PACKAGING AND PACKING: THE FINISHED PART SHALL BE PRESERVED AND PACKAGED IN ACCORDANCE WITH COMMERCIAL PRACTICE.
10. IDENTIFY PER MIL-STD-130 PARA 4.1.B, BY LABELLING ITS CONTAINER WITH THE PART NUMBER. CHARACTERS 1.25 MM HIGH.



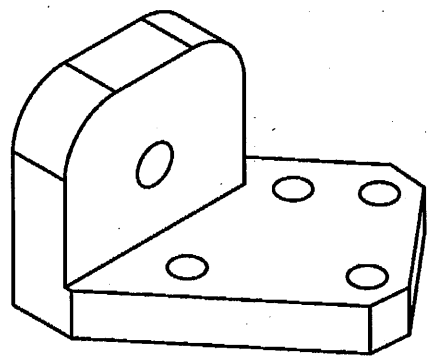
SEE ATTACHED MEDIA

B

B

A

A



(WEIGHT APPROX.: 0.160 Kg.)

UNLESS OTHERWISE SPECIFIED		SIGNATURE	DATE
DIMENSIONS ARE IN MM PER ASME Y14.5M -1994		DRAWN	2/1/21
TOLERANCES LINEAR ANGULAR		CHECKED	
SEE NOTE 5	SEE NOTE 5	HOS/DDO	2/1/21
1st. ANGLE PROJECTION		OFFICER/PRODN	
SURFACE TEXTURE IN Micro M		OFFICER/QC	
PROJECT OFFICER		OFFICER/DDO	2/1/21



ORDNANCE FACTORY TIRUCHIRAPPALLI

TITLE SUPPORT, BELLEVILLE

FOR: BRACKET ASSY 2 OF: 12.7MM SRCG

SIZE	CAGE CODE	DWG NO
B	2291A	064597A-00

SCALE 1:1	AUTOMATED DRAWING (SW)	SHEET 1 OF 1
-----------	------------------------	--------------