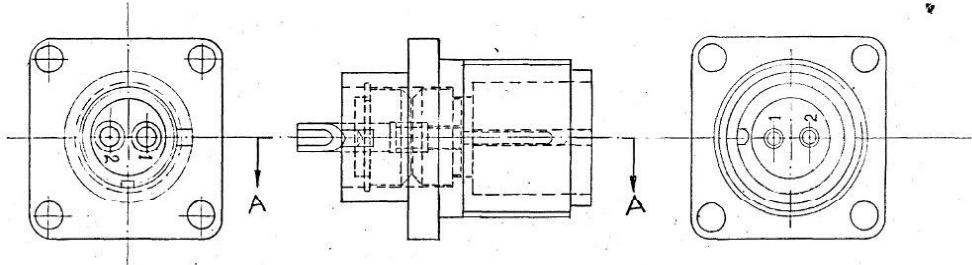
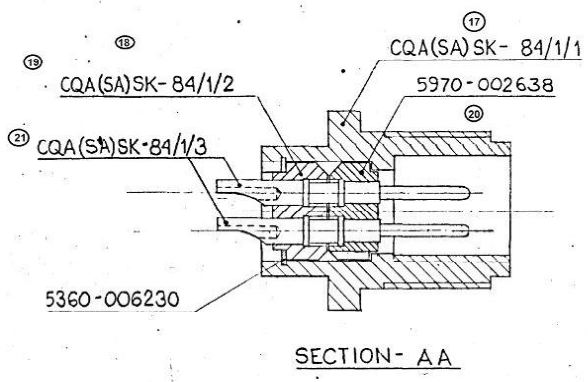


ON  
D S CAT

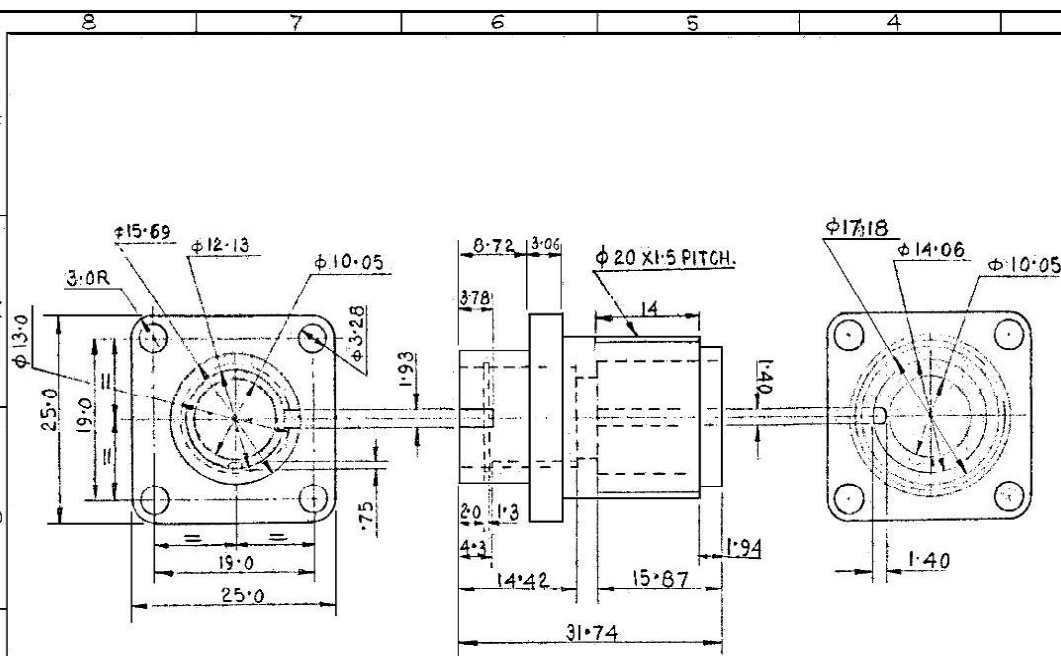
DRG. CONVENTIONS CONFORM TO JSG-0104  
DIMNS ARE IN mm GEN. TOL. 15:2102



65P 11315

16

17-8-98		24162-SA	DRAWING PROVISIONALLY SEALED,		DRN <i>Rareh</i> CHD <i>d. n. 2. n</i> TRD		COMP	ASSY	CQA(SA)SK-358
DATE		AUTHY	BRIEF RECORD		SCALE - 2:1		EST MASS -	MFG/INSP. INSTRUCTIONS	
SEALED PROV.		DC NO. 24162-SA	DT. 17-8-98		APPROVED:		DT. 6-8-98		FOR CQA(SA)
NOMENCLATURE		TWO POLE PLUG (ASSY)			MATERIAL		HT/HARDNESS		PROTECTIVE FINISH
ZONE		VC;DO.	G.O.		SIGN		AHSP		CQA(SA) ICHAPUR
DATE		AUTHY	BRIEF RECORD		SIGN		PART NO		56-CZ-428 MT
SEALED PROV.		DC NO. 24162-SA	DT. 17-8-98		SIGN		DRG. NO		CQA(SA)SK-84/1
NOMENCLATURE		TWO POLE PLUG (ASSY)			SIGN		DS-CAT. NO.		



DRAWING CONVENTIONS CONFORM TO IS:696.

TOLERANCES FOR UNTOLERANCED DIMENSIONS SEE "MEDIUM" IS:2102.

DRAWING PREPARED BY REVERSE ENGINEERING PROCESS AS SUCH SUITABLE NUMBER OF ADVANCE SAMPLES ARE TO BE TRIED OUT BY FITMENT AND FIRING BY CQA(SA) BEFORE BULK IS PRODUCED.

MATERIAL:- AL-ALLOY TO SPECN. BS: 1490-88 DESIG. LM-9, CONDITION 'M' CHILL CAST.

ALT. MATERIAL:- AL-ALLOY TO SPECN. BS: 1490-88 DESIG. LM-6, CONDITION 'M' CHILL CAST.

COLOUR:- STEEL GREY.

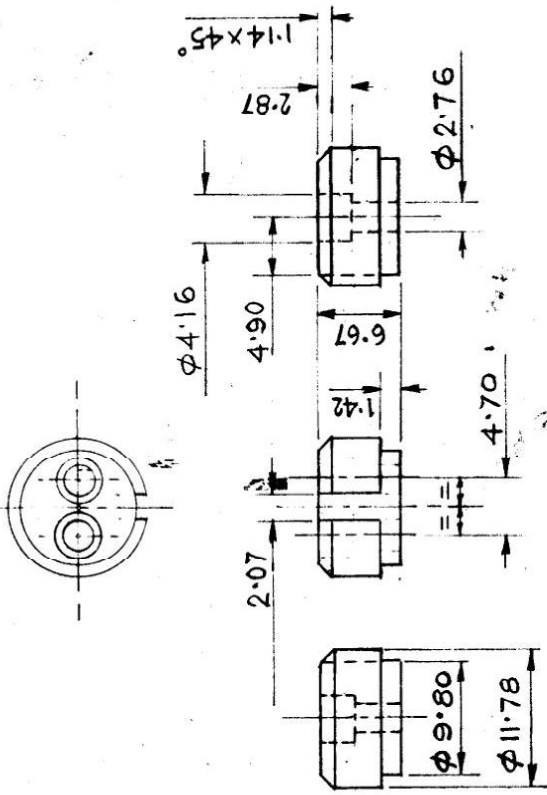
NOTE:- FOR TECHNICAL REQUIREMENTS REFER TO JSS: 50860-1993.

65P 11316

24162- SA	17-8-98	DRG PROV. SEALED	BRIEF RECORDED	DATE	NAMF	Aesy. CQA(SA)SK-84/1	CQA(SA) ICHAPUR
				DGN.	N.ROY.	MATERIAL:- AS STATED	APPROVED: <i>[Signature]</i> DT. 6/11/98 FOR CQA
				CHD.	<i>[Signature]</i>	DIMENSIONS ARE IN MILLIMETRES	
				TRD.			DESIGNER'S REF:- CQA(SA)SK-84/1
				COMP.			PART NO. 1-1/56-Z-428 MT
				SCALE:- 2:1		PLUG BODY:	
				SEALED:- PROV			
				DC NO 24162-SA			
				DT. 17-8-98			

CQA(SA)SK-84/1

DRAWING CONVENTIONS  
CONFORM TO IS: 696



TOLERANCES FOR UNTOLERANCED  
DIMENSIONS SEE "MEDIUM" IS: 2102

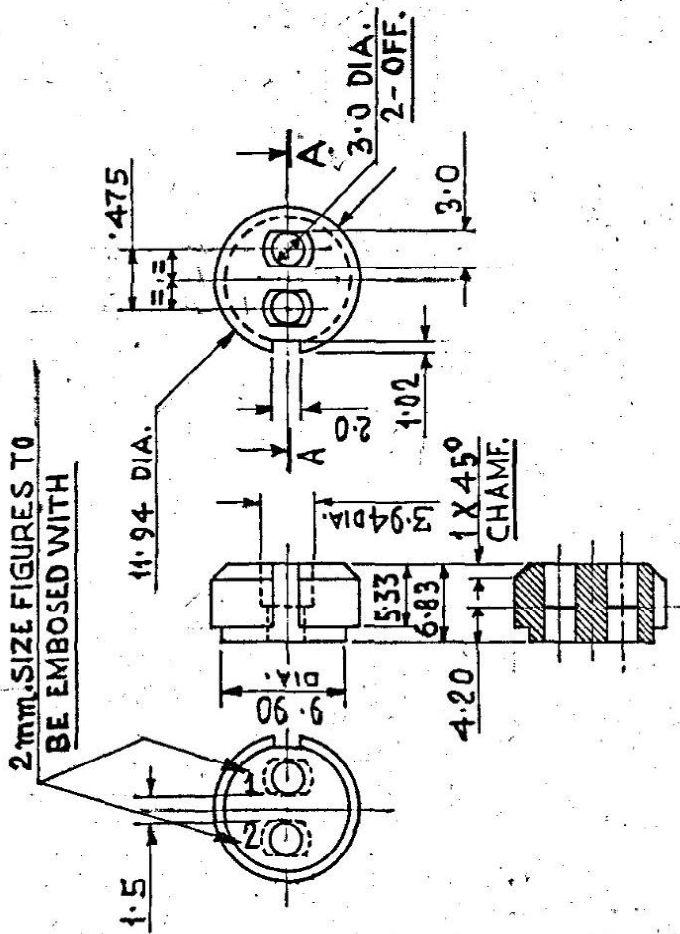
DRAWING PREPARED BY REVERSE  
ENGINEERING PROCESS AS SUCH  
SUITABLE NUMBER OF ADVANCE  
SAMPLES ARE TO BE TRIED OUT BY  
FITMENT AND FIRING BY CQA(SA)  
BEFORE BULK IS PRODUCED.

NOTE :-  
FOR MATL & OTHER TECHNICAL  
REQUIREMENTS REFER TO JSS:  
50860-1923

24162-178- SA	DRG. PROV. SEALED BY DAG	68P 11317	18
AUTHY DATE / ZONE	BRIEF RECORD: SIG.	DATE NAME	ASSY. CQA(SA) SK-84/1
	DGN.		CQA(SA) (CHAPUR)
	DRN.	BIJOY	MATERIAL :-
	CHD.		DIMENSIONS ARE IN MILLIMETRES
	TRD.		APPROVED. <i>[Signature]</i>
	COPM.		DT. 6.8.96 FOR CQA(SA) DESIGNER'S REF. CQA(SA) SK-84/1
	DT. 6.8.96	1/C, D/O	PART NO.
	SCALE :- 2:1		
	SEALED. PROV. DC. NO. 24162-SA		
			PLUG INSULATING INSERT



SUCH SUITABLE NUMBER OF ADVANCE SAMPLES ARE TO BE TRIED OUT BY FITMENT & FIRING BY CQA(SA) BEFORE BULK IS PRODUCED.



2mm. SIZE FIGURES TO BE EMBOSSED WITH

65P 11319

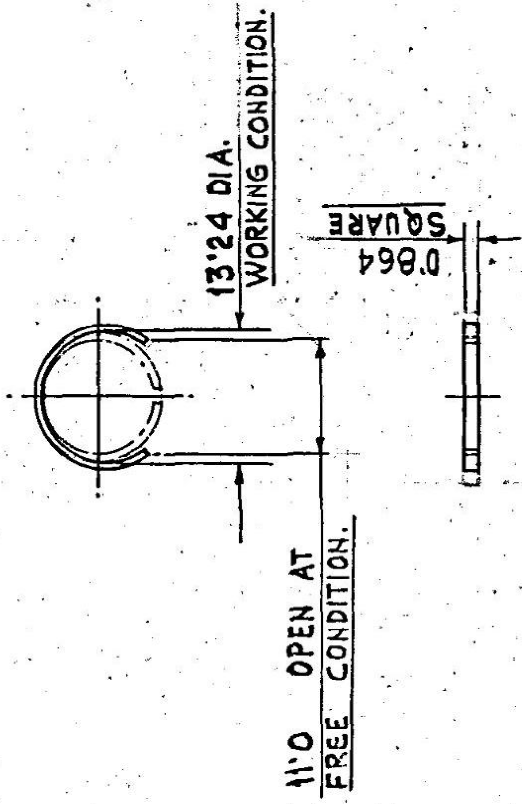
SECTION ON A-A

22170-02-9-9A	NOTE ADDED	Rev
22151-23-293	ASSY. NO. ADDED & PART NO. AMENDED.	MAJOR
20773 10.5.90	D S C AT NO. 5970	MAJOR
20491-28.09	-002638 ADDED	MAJOR
	CL. NEG. PREPARED BY DRG. PRD. RESEALER LT. COL	MAJOR
	PREVIOUS D.C.(I) NO. 19935-SA.	MAJOR
	BRIEF RECORD	MAJOR
	DATE	MAJOR
	ZONE	MAJOR
	NAME	MAJOR

NOTE :-  
FOR OTHER TECHNICAL REQUIREMENTS REFER TO J SS : 50860 - 1993

TOLERANCES FOR UNTOLERANCED DIMENSIONS SEE MEDIUM 15:2102"	DATE	NAME
DRAWING CONVENTIONS CONFORM	DGN.	
	DRN.	
	CHD.	
	TRD.	4789
	COMP.	15-7-89
	BY	UIC:DO.
	SCALE:-	2:1
	ASSY:-	5945-001890 & CQA(SA) SK-84/1
	MATERIAL:-	PLASTIC D.
	DIMENSIONS ARE IN	MILLIMETRES
	APPROVED, DT:-	4-2-79
	CL. NEG. PREPARED.	DESIGNER'S REF. NO.
	INSULATING	
	CQA(SA) ICHAPUR	

TRIED OUT BY FITMENT & FIRING BY(CANSA), BEFORE BULK IS PRODUCED.



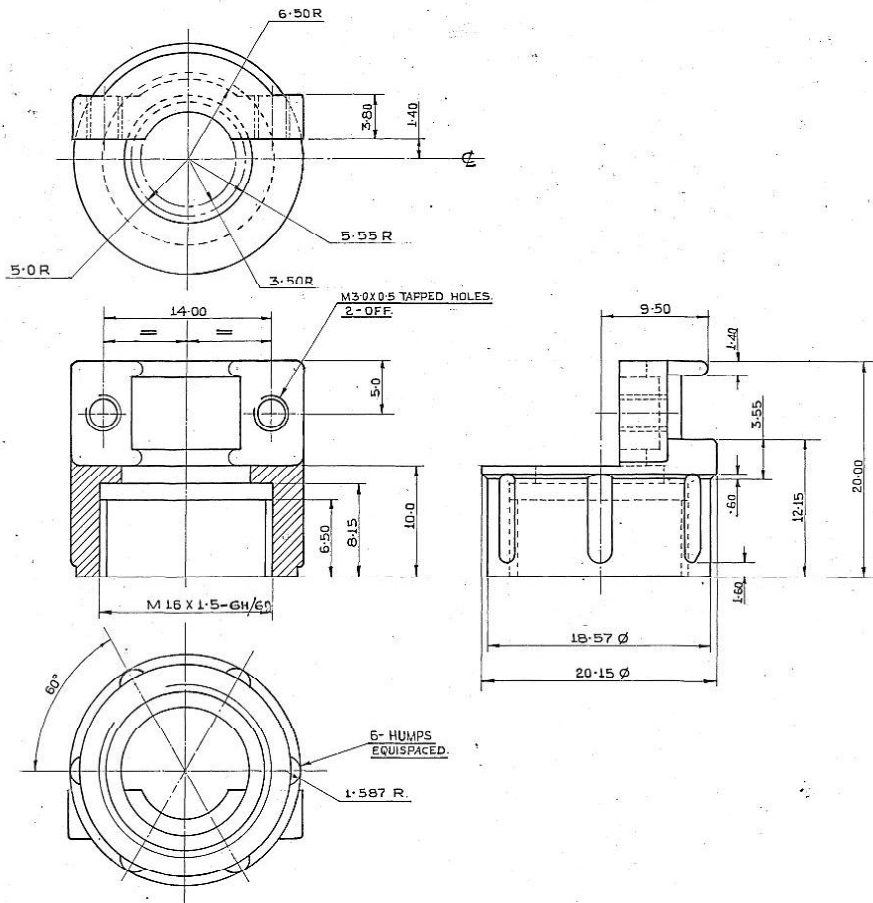
**MATERIAL :-**  
**BS:1475-1972 DESIG.G1B**  
**CONDITION 'H8'**

65P 11320

REV	DATE	NOTE ADDED	Rev. No.
24170-102-9-98	1 SA		1
22166-7-3-93	-SA	ASSY. No. ADDED & PART No. AMENDED.	MAJOR
20772-10-5-90	-SA	D S CAT No. 5360-06230 ADDED	MAJOR
20491-2-8-89	-SA	CL. NEG. PREPARED & ORIG. APPROVER SEALED	MINOR
		PREVIOUS D.C(C) NO. 19935-SA.	LT. COL
			(COPY)

**NOTE :-**  
 FOR OTHER ~~REFERENCE~~ TECHNICAL REQUIREMENTS REFER TO JSS: 50860-1993.

AUTHY.	DATE	ZONE	BRIEF RECORD	SIG.
TOLERANCES FOR				
UN TOLERANCED				
DIMENSIONS SEE				
MEDIUM IS: 2102				
DRAWING CONVEN				
TIONS CONFORM				
SCALE :- 2:1				
DGN. NAME				
PRN.				
CHD.				
TRD. 7.7.89				
COMP. 11-7-89				
1/C. D.O				
ASSY. 5625-001890 & CGA(SA) SK 84/1				
C.O.A(SA) (CHAPUR)				
MATERIAL :- AS STATED.				
DIMENSIONS ARE IN MILLIMETRES				
APPROVED. DT. 4.2.78				
CL. NEG. PREPARED.				
DESIGNER'S REF.				
CISA - 554/10				



DRAWING PREPARED BY REVERSE ENGINEERING PROCEDURE AS SUCH SUITABLE NUMBER OF ADVANCE SAMPLES ARE TO BE TRIED OUT BY FITMENT & FIRING BY COA(SA), BEFORE BULK IS PRODUCED.

DRAWING CONVENTIONS CONFORM TO IS : 696.  
TOLERANCES FOR UNTOLERANCED DIMENSIONS SEE 'MEDIUM' IS : 2102.

MATERIAL :- BS:1490:1988 DESIGN LM-9 SAND OR INVESTMENT CAST CONDITION 'E'  
OR  
IS:617-1975 DESIGN 4535 SAND CAST CONDITION 'P'

ALTERNATIVE MATERIAL :- BS:1490:1988 DESIGNATION LM-6 SAND OR INVESTMENT CASTING CONDITION 'M'  
OR  
BS:1490:1988 DESIGNATION LM-25 SAND OR INVESTMENT CASTING CONDITION 'E'

PROTECTIVE FINISH :-  
ANODIZED AS PER Gr. AC 2.5 OF IS:6651-1987  
COLOUR - STEEL GREY

SHARP EDGES REMOVED.

NOTE :-  
FOR OTHER TECHNICAL REQUIREMENTS REFER TO ISS:50860 -1993

ESP 11221

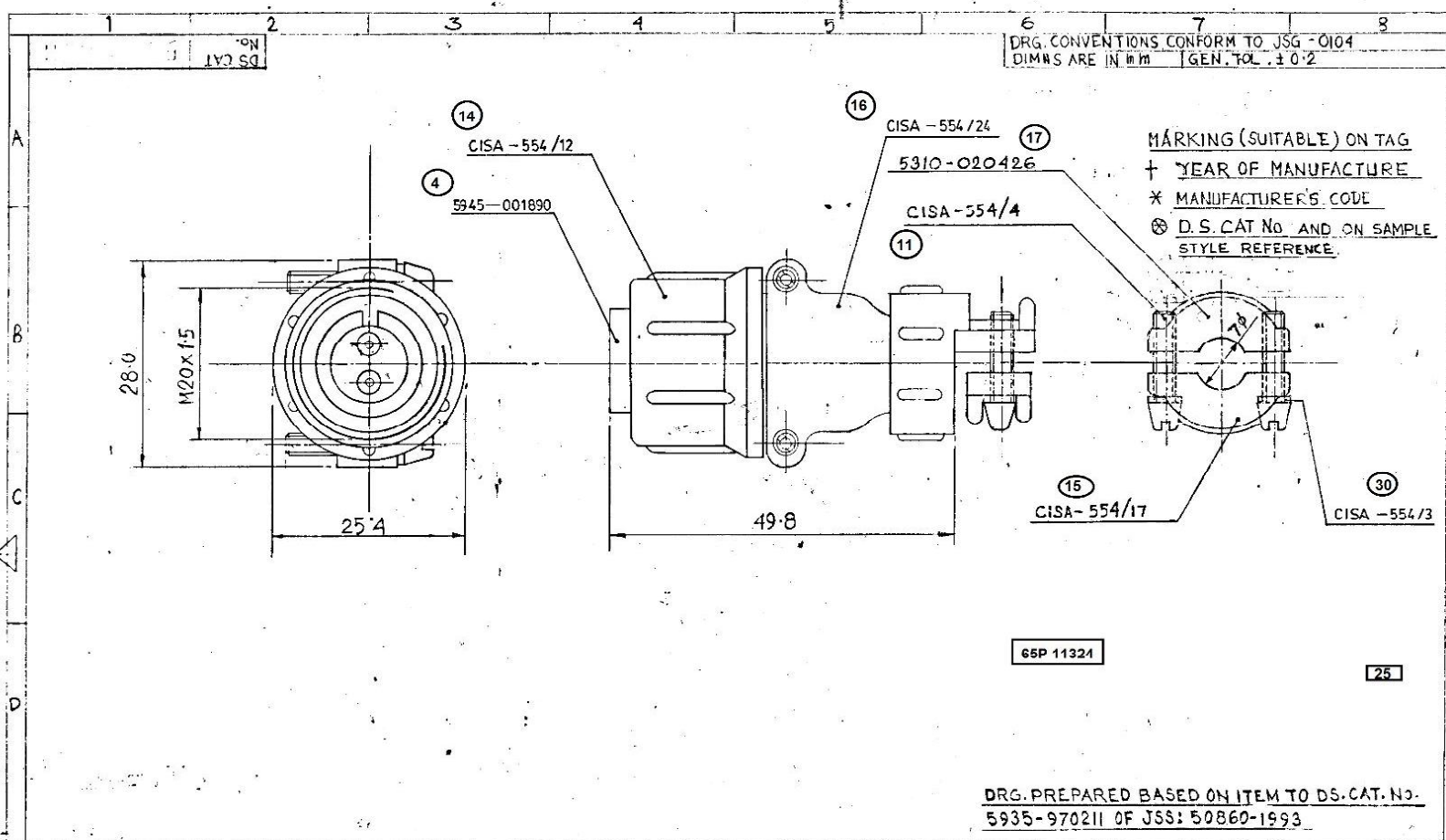
21

REV	DATE	BY	CHKD	APPD	ZONE	NOTE	DATE	NAME	ASSY.	QQA(SA) ICH
1	18-11-97	C/S				NOTE ADDED		DGN	DS.CAT.NO:5935-001569.	APPROVED BY:23
2	21-11-97					HATL & ALTHATL. AMENDED		DRN	MATERIAL:- AS STATED.	REG. RE-TRAC
3	22-12-97					NOMENCLATURE AMENDED AND DS. CAT. NO. ADDED.		TRD	DIMENSIONS ARE IN MILLIMETRES	DESIGNERS RE
4	21-95					THIS DRAWING DELETED VIA 2110 X 150 SERIALS TO: 0011 MAINT. DIA. AND DES. PROD. RE-SERIALIZED.		COMP	SCALE: 4:1	DRFT NO.:
5	15-10-92					PREVIOUS DCO Nos. 20903-SA, 21774-SA AND 21876-SA.		BT (E.O. 11) / Y.V. / Y.V.	SCALE: 4:1	DS. CAT. NO.:
						BRIEF RECORD		SEALD:- PROV. DC(I)-19935-SA.	SCALE: 4:1	5310-0204
								COPY		
								SIG.	DT:5-3-88.	





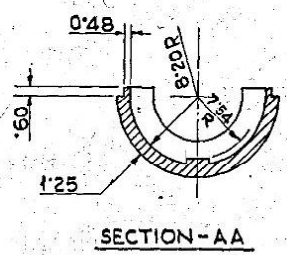
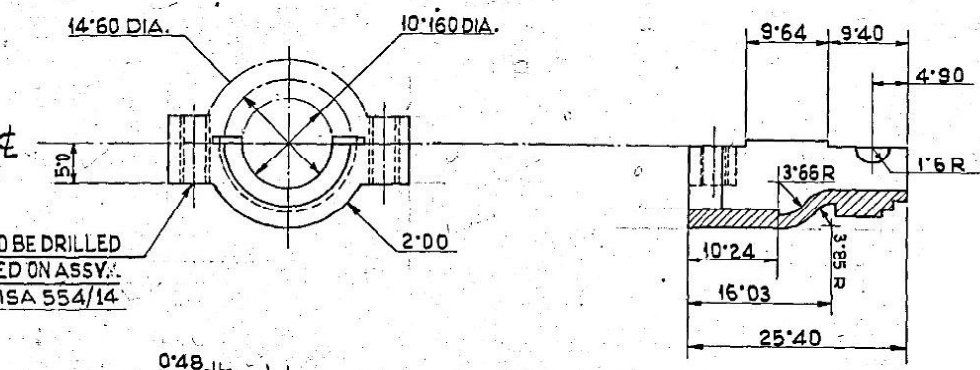
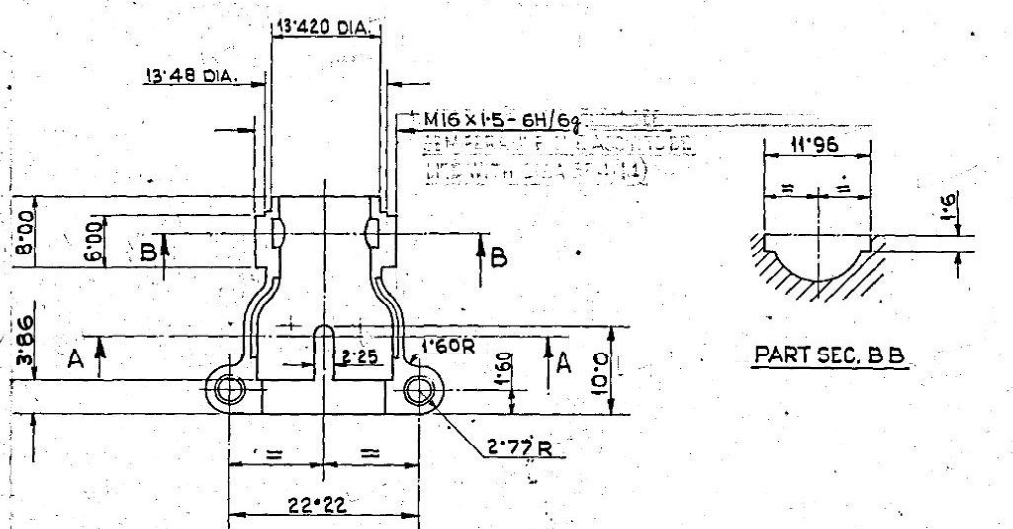




22-8-98	24165-SA	NOTE DELETED, DETAIL DRG. NOS. INDICATED AND DRG. NO. CISA 554/4 WAS CISA 554/11.			DRN	TRD	COMP	AHSP CQA (SA), ICHAPUR
26.11.97	23963-SA	VIEW ADDED, AMENDED; DIM. 7 $\phi$ & DRG. NOS. SHOWN PROPERLY & NOTE AMENDED			SCALE - 2:1	EST MASS		ASSY CQA (SA) SK-84
7-3-97	23716-SA	DRG. SEALED PROVISIONALLY.			DT 24-2-97	APPROVED		DGNRS STYLE REF CSTM REF
DATE	AUTHY	BRIEF RECORD	ZONE	V/C:DO	GO	HT/HARDNESS		PART No
SEALED:- PROV. SEALED, DC No. 23716-SA, DT. 7.3.97.				SIGN		PROTECTIVE FINISH		DRG No. CQA(SA) SK-359
NOMENCLATURE - OUT LINE SKETCH OF CONNECTORS, CIRCULAR, THREADED COUPLING (METRIC SHELL SIZE), PLUG, STRAIGHT BACK SHELL								DS CAT No.







DRAWING CONVENTIONS CONFORM TO IS: 696

TOLERANCES FOR UNTOLERANCED DIMENSIONS SEE "MEDIUM IS: 2102"

DRAWING PREPARED BY REVERSE ENGINEERING PROCESS AS SUCH SUITABLE NUMBER OF ADVANCE SAMPLES ARE TO BE TRIED OUT BY FITMENT & FIRING BY CQA(SA) BEFORE BULK IS PRODUCED.

MATL.: AL-ALLOY TO SPECN. BS: 1490: 88. DESIG. LM-9; CONDITION 'M'; CHILL CAST.

ALTERNATIVE MATL.: AL-ALLOY TO SPECN. BS: 1490- 88. DESIG. LM-6, CONDITION 'M'; CHILL CAST.

SHARP EDGES REMOVED.

DRAWING CONVENTIONS CONFORM TO IS: 696

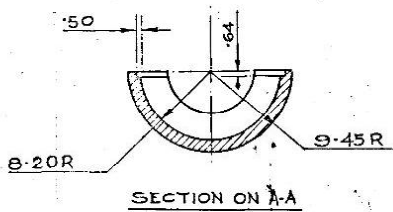
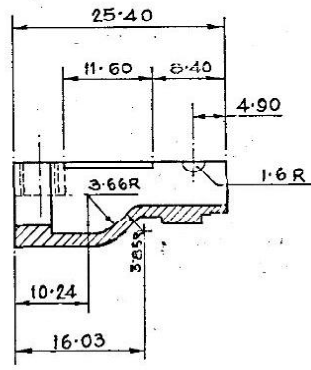
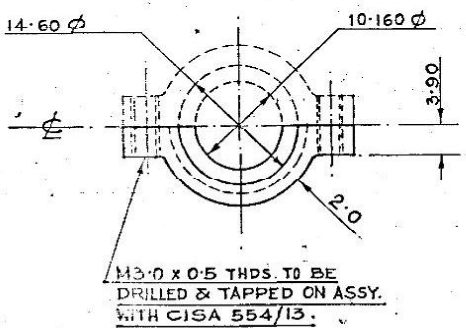
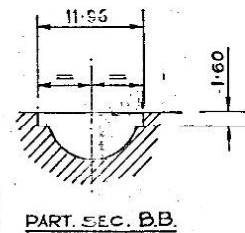
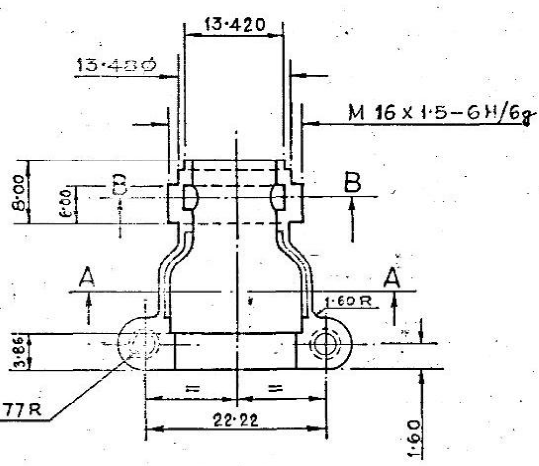
PROTECTIVE FINISH: ANODIZED AS PER Gr. AC 2-5 OF IS: 6651-1972

COLOUR: STEEL GREY.

NOTE: FOR OTHER TECHNICAL REQUIREMENTS REF TO JSS: 50860-1993

65P 11327

AUTHY	DATE	ZONE	BRIEF RECORD	SIG.	SCALE	DATE	NAME	ASSY: CISA 554/14	CQA(SA) ICHAP
24170-SA	02-9-98		NOTE ADDED.	Ren	DGN				
23577-SA	18-11-96		MATERIAL & ALTERNATIVE MATERIAL AMENDED	DAC	DRN			MATL.: AS STATED.	
22163-SA	7-3-93		ASSY NO & PART NO AMENDED, DRAWING CONVENTION NOTE ADDED, PROTECTIVE FINISH NOTE ADDED & THRD. NOTE AMENDED ON VIEW (DRG)	MAJOR	TRD			DIMENSIONS ARE IN MILLIMETRES.	
21876-SA	23-7-92		D S CAT NO. ADDED IN ASSY. COLUMN	MAJ	COMP.				APPROVED DT. 23-
20126-SA	6-9-88		CLOTH NEG. PREPARED & DRAWING. BODY RESEALED	MAJ		SCALE: 2:1		SEMI FERRULE WITH GUIDE SPLINE	CL. NEG. PREPARED DESIGNER'S REF. CISA-554/13 PART No: 2-656-2-
						SEALING: PROV. D. I.			
						19935-SA DT. 3-3-88			



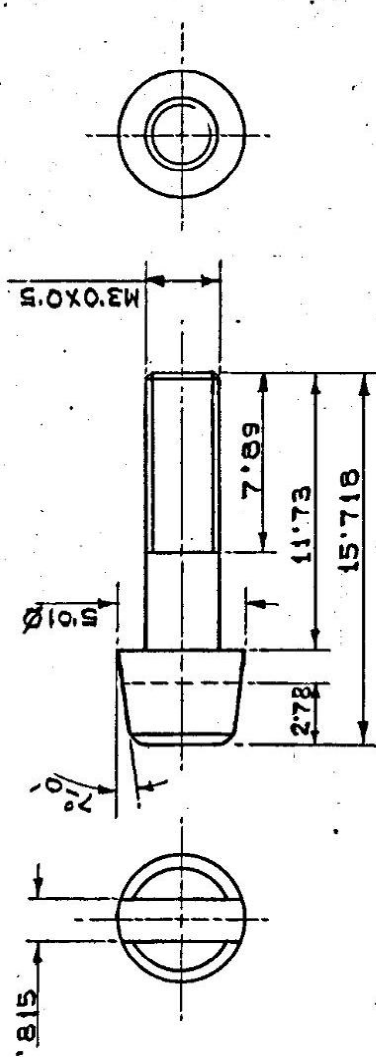
DRAWING CONVENTIONS CONFORM TO IS: 696.  
 TOLERANCES FOR UNTOLERANCED DIMENSIONS SEE "MEDIUM" IS: 2102.  
 DRAWING PREPARED BY REVERSE ENGINEERING PROCES. AS SUCH SUITABLE NUMBER OF ADVANCE SAMPLES ARE TO BE TRIED OUT BY FITMENT & FIRING BY CQA(SA) BEFORE BULK IS PRODUCED.  
 SHARP EDGES REMOVED.  
 MATERIAL :-  
 AL-ALLOY TO SPECN. BS: 1490:88; DESIG. LM-9, CONDITION 'M', CHILL CAST.  
 ALTERNATIVE MATERIAL :-  
 AL-ALLOY TO SPECN. BS: 1490-88; DESIG. LM-6, CONDITION 'M', CHILL CAST.

PROTECTIVE FINISH :-  
 ANODIZED AS PER Gr.AC2.5 OF IS: 6651-1972, COLOUR-STEEL GREY.  
 NOTE :-  
 FOR OTHER TECHNICAL REQUIREMENTS REFER TO JSS: 50860-1993.

65P 11328

NO.	DATE	ZONE	DESCRIPTION	BY	DATE	NAME	ASSY.:-	CQA(SA)
A3	24170-SA	02-9-98	NOTE ADDED.	BAG			CISA 554/24	ICHAPU
A4	23577-SA	18-11-96	MATERIAL & ALTERNATIVE MATERIAL AMENDED	DAC			MATERIAL:- AS STATED	⊕
A5	22097-SA	24-12-92	DES. RE-TRACED REVISED & PROV. RE-SEALED. PREVIOUS DC NOS. 19335-SA, 21876-SA.	LYCOL	24.12.92	Rmha	DIMENSIONS ARE IN MILLIMETRES	APPROVED: DT. 23.12.92
							SEMI-FERRULE	NEGATIVE RE-TRACED
								DESIGNER'S REF. CISA-554/14
								PART NO. 2-7/56-Z-428M
								D.S. CAT. No.

AS SUCH SUITABLE NUMBER OF ADVANCE SAMPLES ARE TO BE TRIED OUT BY FITMENT & FIRING BY CQA(SA) BEFORE BULK IS PRODUCED.



2-OFF

MATERIAL:-  
IS: 2B0 (SOFT OR 1/4 HARD) BRIGHT.

PROTECTIVE FINISH:-  
PHOSPHATE TO SPECN. JSS: 0465: 01-1988  
CLASS II, (ACCELERATED) OIL FINISH

65P 11329

30

22148 -SA	18-2-93	PROT. FINISH, PT. NO. AND ASSY. NO. AMENDED.	<i>Wing</i>
21876 -SA	23.7.92	D/S CAT. NO. ADDED IN ASSY. COLUMN	<i>Wing</i>
20825 -SA	11.6.90	ASSY. DIR. DRAWING CORRECTED TO SPEC. ADDED TO PROT. FINISH	<i>Wing</i>
20491 -SA	2.8.89	CL. NEG. PREPARED & DRG. PREPARED. RET. SEALED. I.C. COL.	<i>Wing</i>
		PREVIOUS DC (U. NO. 18935 - SA) COPY.	

AUTHY. DATE	ZONE	BRIEF RECORD	SIG.
TOLERANCES FOR UNTOLERANCED DIMENSIONS SEE T. MEDIUM IS: 2102			
DGN.	DATE	NAME	
DRN.			
CHD.			
TRD.	5.7.89	SHAWND	
COMR	8.7.89	<i>Shawnd</i>	
SCALE:- 4:1			
SHARP EDGES REMOVED.			
DRAWING CONVENTIONS			

ASSY. NO. 554/24	CQA(SA) ICHAPUR
MATERIAL:- AS STATED	
DIMENSIONS ARE IN MILLIMETRES	APPROVED: DT. 24.11.77
	(CL. NEG. PREPARED) DESIGNER'S REF. CISA-554/15

SCREW