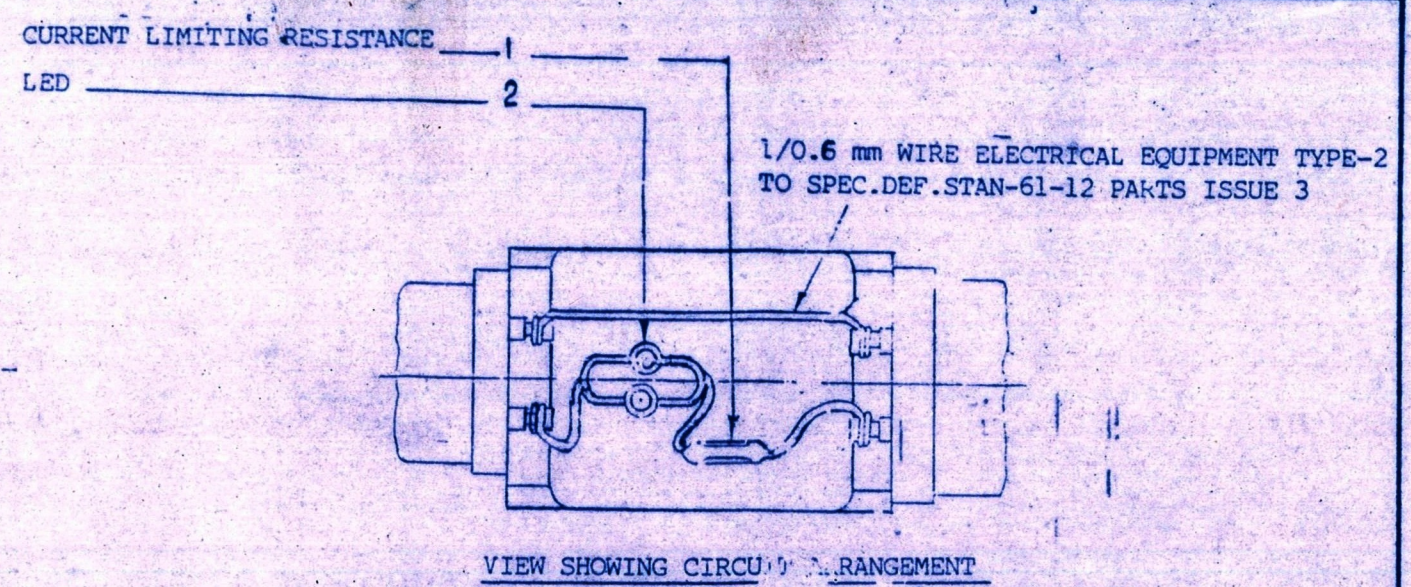
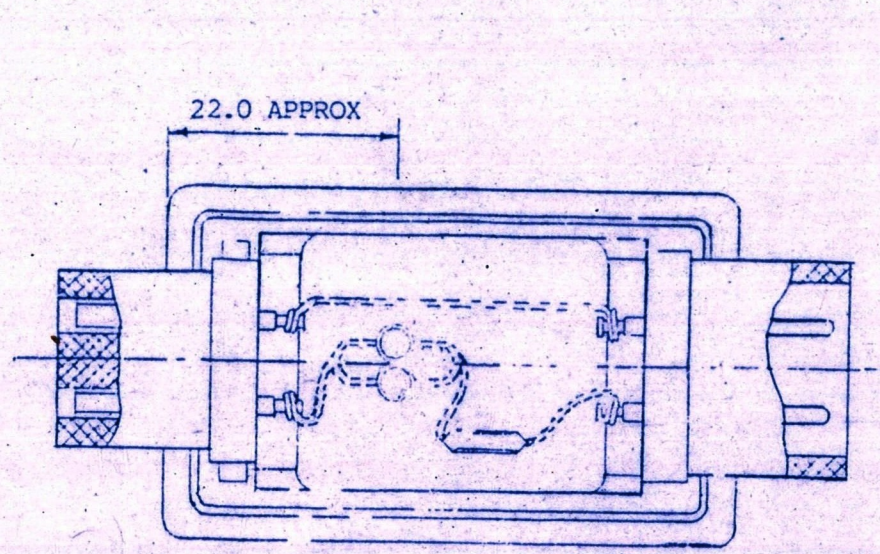


D.C.-35188-A, 5818-I

REDUCED DRG. PREPARED AT COA (I) DEHRA DUN
 PREPARED BY : *[Signature]*
 CHECKED BY : *[Signature]*
 CHECKED FOR QM
 DATE:



LED SPECIFICATION

- 1) PULSE RIMS-100 mA TO 300 mA FOR 10 m S.C.
 - 2) ILLUMINATION DETECTABLE AT 100 mA 10 m SEC PULSE IN DAY LIGHT.
- NO. 12-3

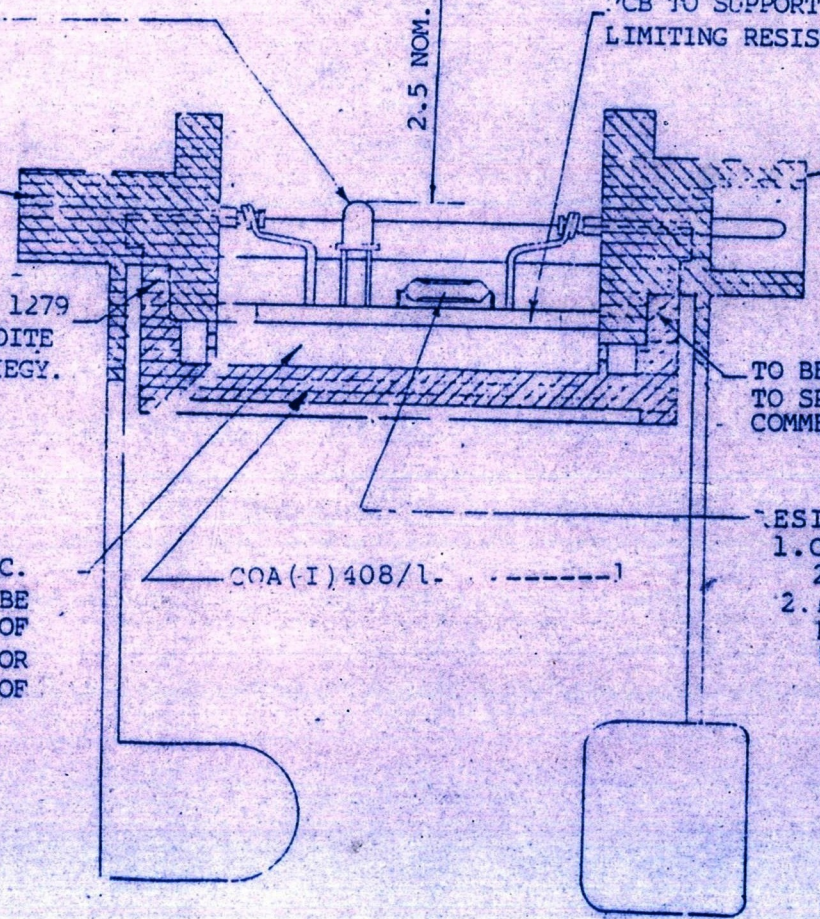
ADJUST THE LED AS SHOWN BEFORE POURING THE CUSHIONING MATERIAL IN THE CAVITY.

PCB TO SUPPORT LED & CURRENT LIMITING RESISTANCE.

NOTE:-

- A) CIRCUIT AS ABOVE TO SOLDERED WITH SOFT SOLDER TO SPEC. IS: 193-1982 Sn 63
- B) LED-DETAILS-COLOUR-RED
WAVE LENGTH OF MAX. INTENSITY-620-660 nm
CONTINUOUS FORWARD CURRENT-6 mA
TRANSIENT FORWARD CURRENT(10 msec pulse)-500 mA
- C) RESISTANCE DETAILS TYPE-METAL FILM
VALUE 100 ± 5%
CONTINUOUS RATING 250 mW

COA(I) 408/2(2-SHOTS.)



TO BE STUCK WITH CEMENT RD 1279 TO SPEC. IND/ME/705 OR ARALDITE COMMERCIAL GRADE OF CIBA-GIEGY.

TO BE STUCK WITH CEMENT RD 1279 TO SPEC. IND/ME/706 OR ARALDITE COMMERCIAL GRADE OF CIBA-GIEGY.

CUSHIONING MATERIAL TO SPEC. IND/ME/796 PROVISIONAL TO BE POURED FLUSH WITH SURFACE OF BODY MARKED 'XX' AS SHOWN OR ARALDITE COMMERCIAL GRADE OF CIBA-GIEGY.

RESISTANCE SPEC.
1. CONTINUOUS POWER DISSIPATION 250 mW
2. PAK POWER DISSIPATION 1W FOR 10 m SEC.
NOTE C

AMENDMENTS	CHL	STG	DATE
D.C.-5818-I-DRG. REDUCED & SEALED IN SUPERSESSION OF IUX-156 A.			20.1.94
FOR EXPLANATION OF DIMENSIONING ETC. SEE COA(I) GUIDE No 001-1/92.	URN	sd	APPROVED
THIRD ANGLE PROJECTION	TCD	sd	FOR CONTROLLER
DIMENSIONS ARE IN mm	CHU	sd	COA(I) DDUN
	CHD		DATE - 19-1-94
MATL & SPEC:-	USED		
SEE DETAILS	ON		
	BASED ON		IUX 156 A
	CA/P/ No.		1345-000430
FINISH & SPEC:-	DRG No.		COA(I) 408/A-1
SEE DETAILS	SCALE	1 SH	OF

TITLE:-

BODY ASSEMBLY, TESTING DEVICE I B