

8

7

6

5

4

3

1

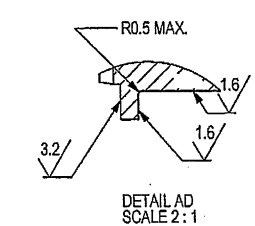
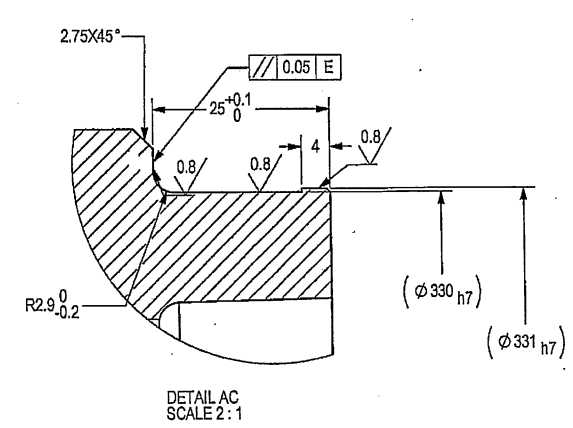
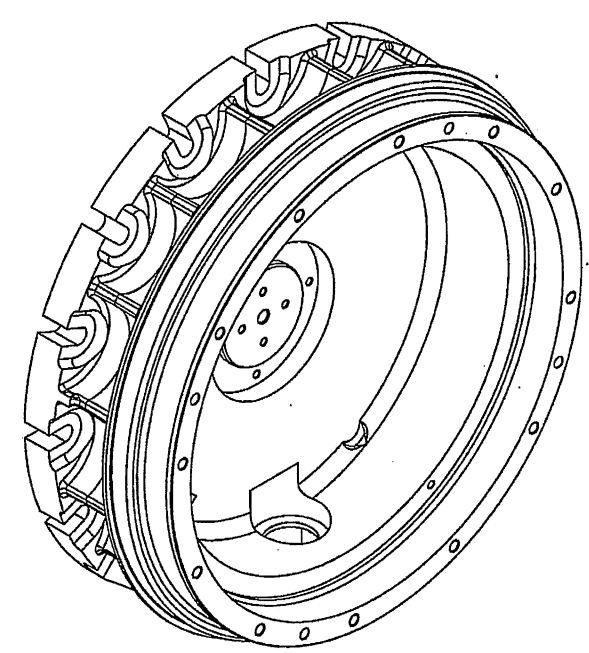
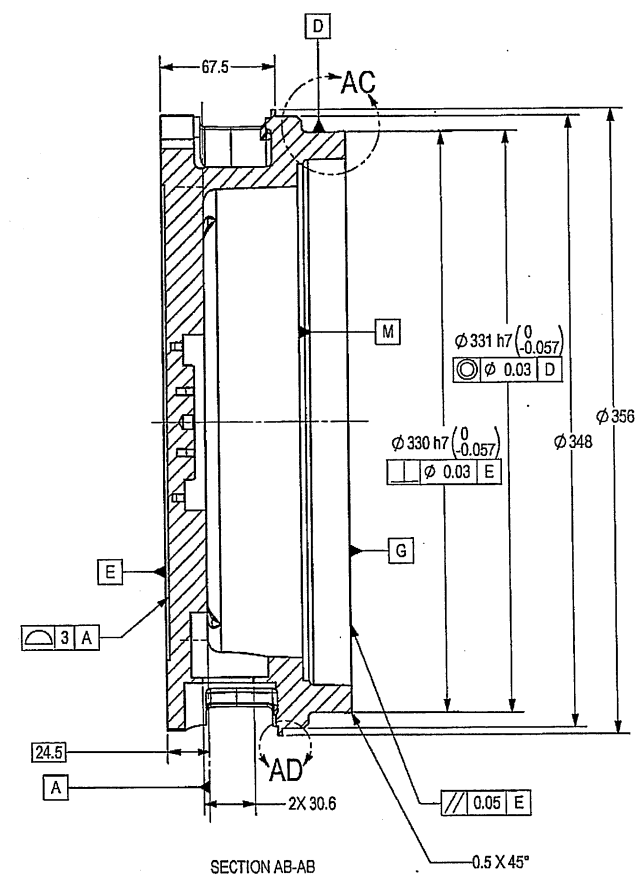
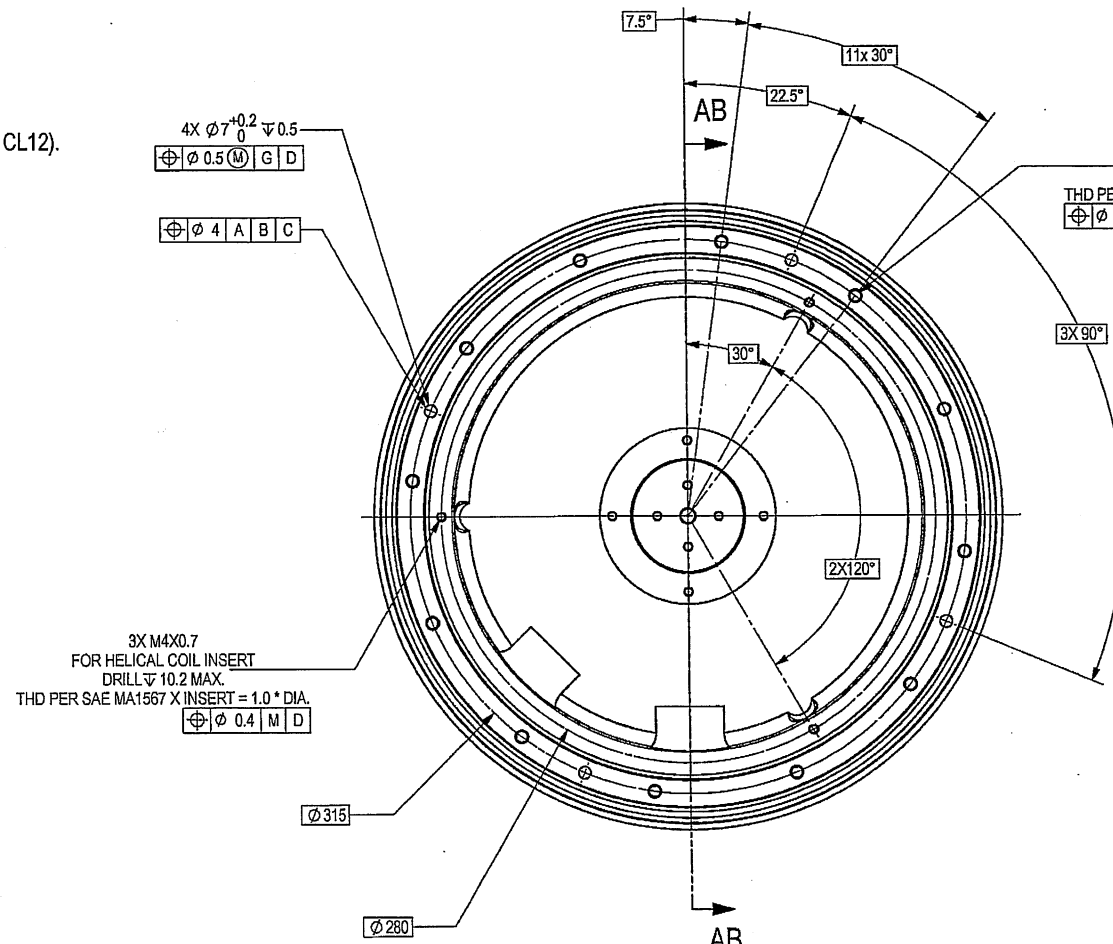
THIS DOCUMENT AND THE INFORMATION CONTAINED IN IT ARE PROPRIETARY AND CONFIDENTIAL TO OFT. NO PERSON OR ENTITY IS ALLOWED TO COPY, REPRINT, REPRODUCE OR PUBLISH ANY PART OF THIS DOCUMENT, NOR DISCLOSE ITS CONTENTS TO OTHERS, NOR MAKE ANY USE OF IT, NOR ALLOW OR ASSIST OTHERS TO MAKE ANY USE OF IT UNLESS BY THE PRIOR WRITTEN EXPRESS AUTHORIZATION OF OFT AND THEN ONLY TO THE EXTENT AUTHORIZED. COPYRIGHT-OFT.

SHEET REV STATUS
ALL SHEETS ARE THE SAME REVISION

DWG		SH		REV	
Y17140A-00		1			
REV	ECO	DESCRIPTION	DATE	APVD	
03		Freeze	24-Oct-17	E. Reshaf	
04		Freeze	28-Nov-17	Y. Shapira	
05		Freeze	04-Jan-18	Y. Shapira	
06		Freeze	08-Aug-18	E. Marom	
-	100122	Identical To Previous	07-Oct-18	Z. Rabayev	

NOTES:

- INTERPRET THIS DRAWING IAW ASME Y14.100M.
- MATERIAL: SEE FN 1.
(BASE MATERIAL: ALUMINIUM ALLOY SAND CASTING A357 T6 PER AMS-A-21180 CL12).
- CASTING DATUMS: A,B,C ARE SHOWN ON SHEET 3, FOR REFERENCE ONLY.
- DEBURR AND REMOVE SHARP EDGES APPROX. 0.3X45°.
- QUALITY ASSURANCE PROVISIONS:
5.1 QUALITY ASSURANCE PROVISIONS FOR THIS ITEM PER RDMQD00012P.
- PARENTHETICAL FIGURES ARE FOR REFERENCE ONLY.
- PACKAGING AND PACKING:
THE FINISHED PART SHALL BE PRESERVED AND PACKAGED IN ACCORDANCE WITH COMMERCIAL PRACTICE.
- IDENTIFY PER MIL-STD-130 PARA 4.1.B, BY LABELING ITS CONTAINER WITH THE PART NUMBER. CHARACTERS MINIMUM TEXT HEIGHT 1.25 MM.



(WEIGHT APPROX.: 7.0 Kg.)

UNLESS OTHERWISE SPECIFIED:		SIGNATURE		DATE	
DIMENSIONS ARE IN MM PER ASME Y14.5 - 2009		DRAWN		11/17/17	
TOLERANCES		CHECKED		TITLE	
LINEAR	ANGULAR	HOS/DDO		FOR: BASE FINISHED	
± 0.2	± 0.5°	OFFICER/PRODN		OF: 12.7MM SRCG	
-1st. ANGLE PROJECTION		OFFICER/QC		SIZE	
SURFACE TEXTURE IN MicroINCH		OFFICER/DDO		D 2291A	
				CAGE CODE	
				Y17140A-00	
				DWG NO	
				Y17140A-00	
				SCALE	
				1:2	
				AUTOMATED DRAWING (SW)	
				SHEET 1 OF 3	

SEE SEPARATE PARTS LIST
SEE ATTACHED MEDIA

ORDNANCE FACTORY
TIRUCHIRAPPALLI

PROJECT OFFICER

PLM Control

8

7

6

5

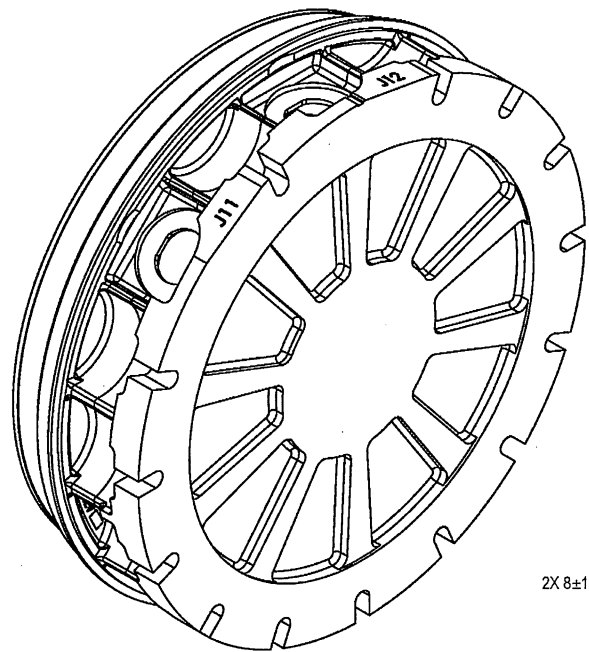
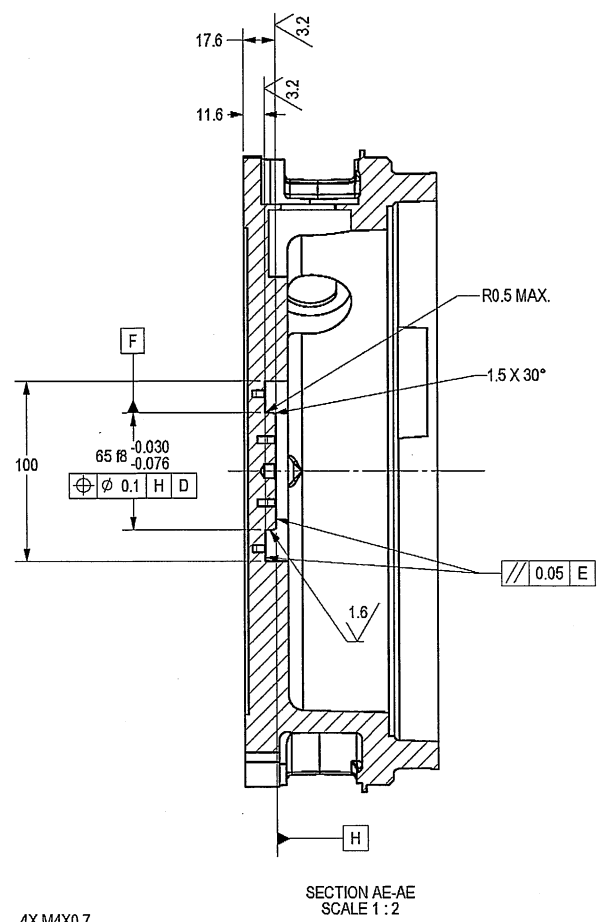
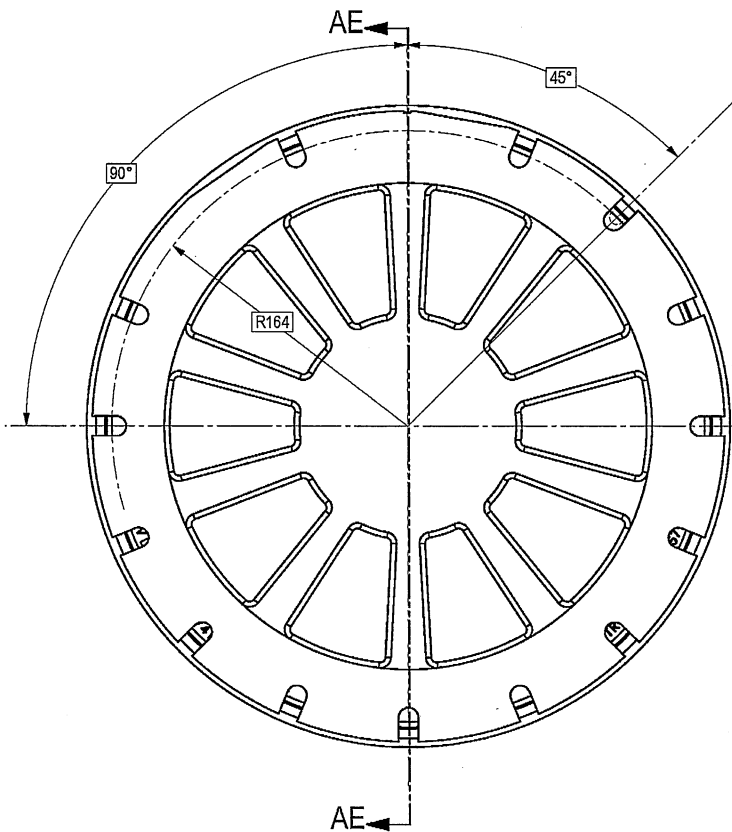
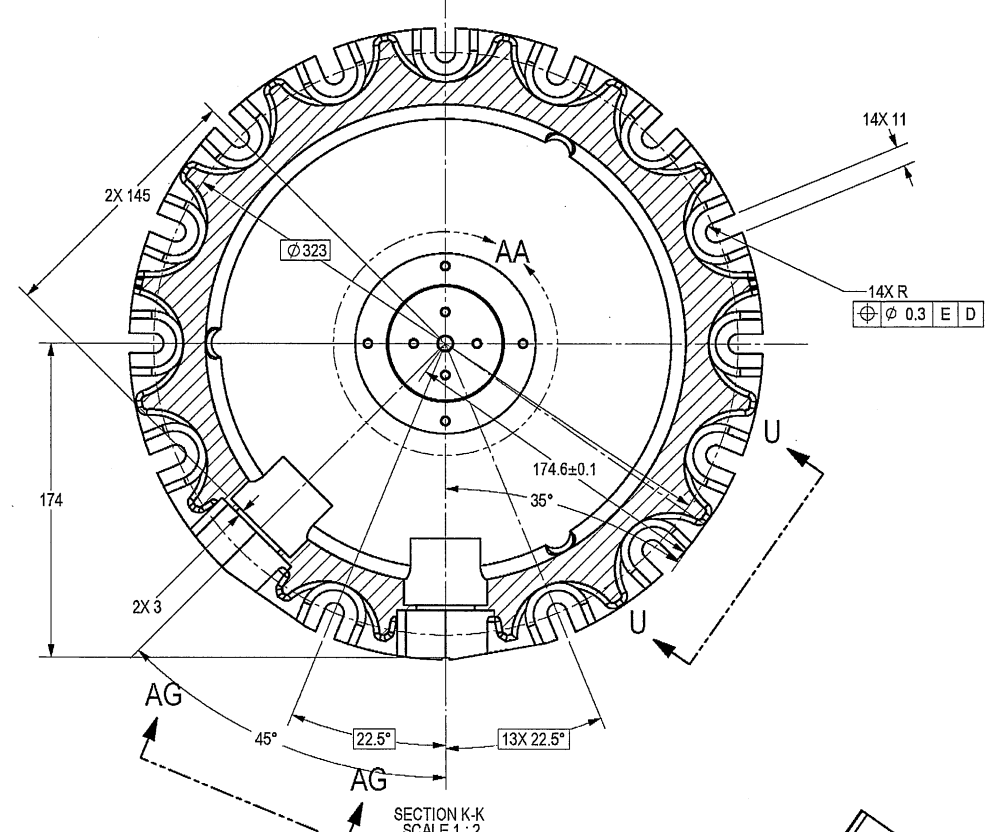
4

3

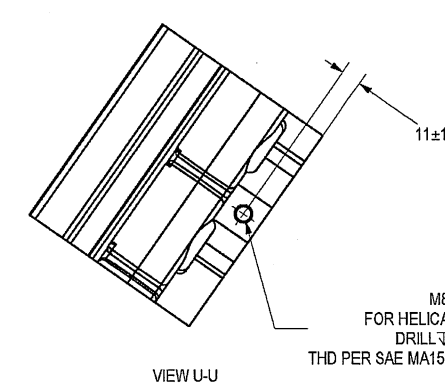
1

D
C
B
A

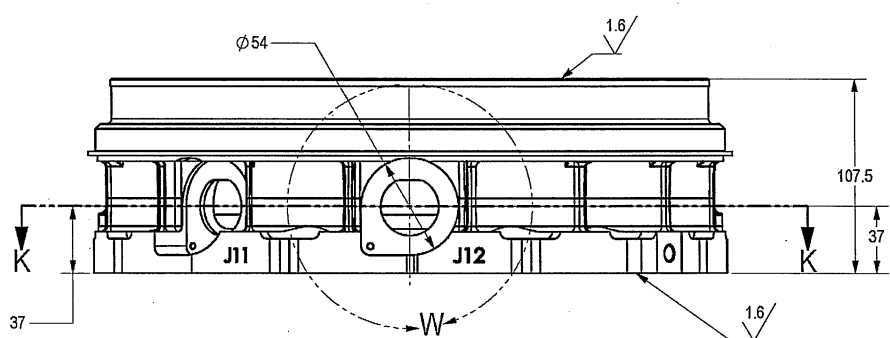
D
C
B
A



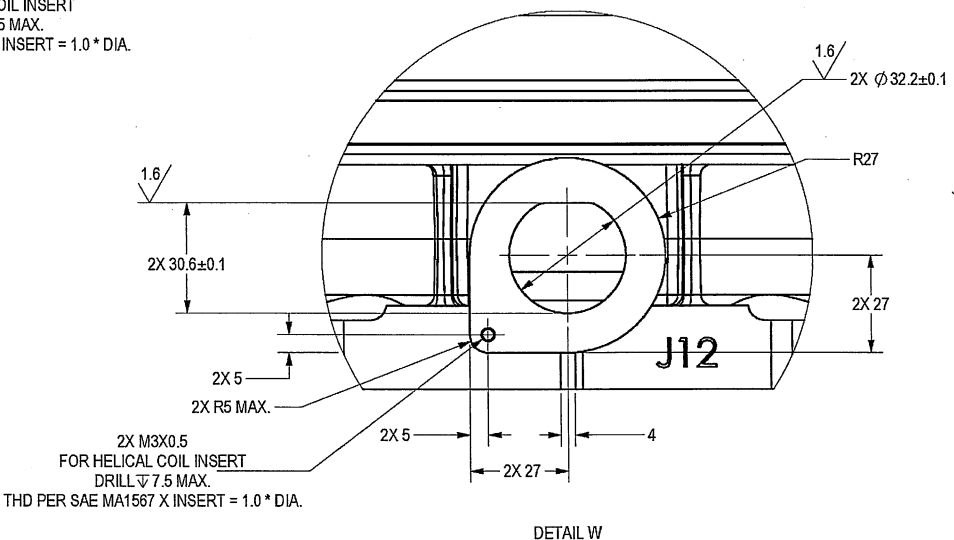
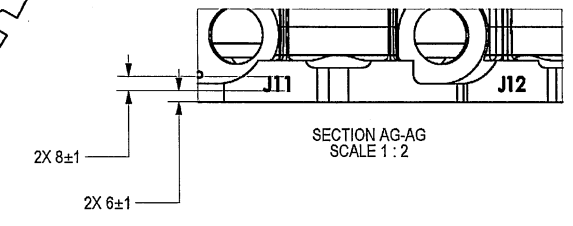
SECTION K-K SCALE 1:2



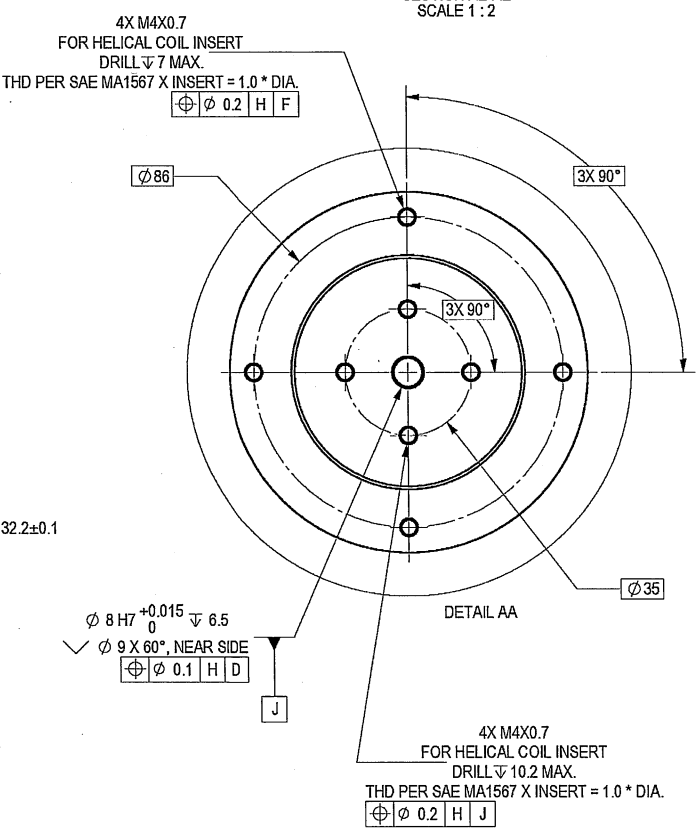
M8X1.25 FOR HELICAL COIL INSERT
DRILL ∇ 19.5 MAX.
THD PER SAE MA1567 X INSERT = 1.0 * DIA.



SECTION AG-AG SCALE 1:2



2X M3X0.5 FOR HELICAL COIL INSERT
DRILL ∇ 7.5 MAX.
THD PER SAE MA1567 X INSERT = 1.0 * DIA.



SIZE	CAGE CODE	DWG NO	REV
D	2291A	Y17140A-00	--
SCALE	1/1	AUTOMATED DRAWING (SW)	SHEET 2 OF 3

8

7

6

5

↓

4

3

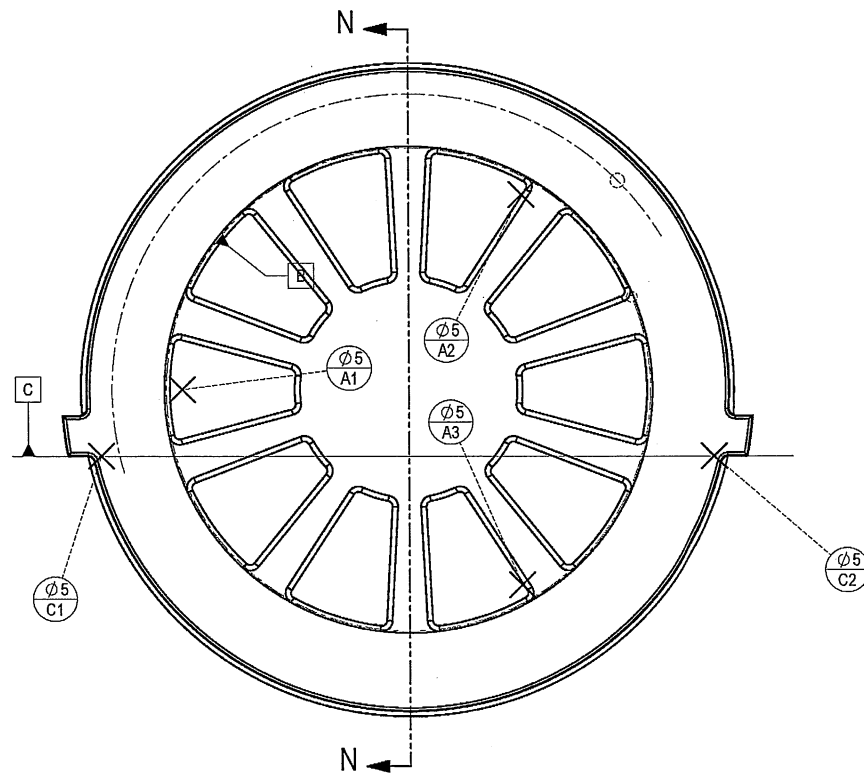
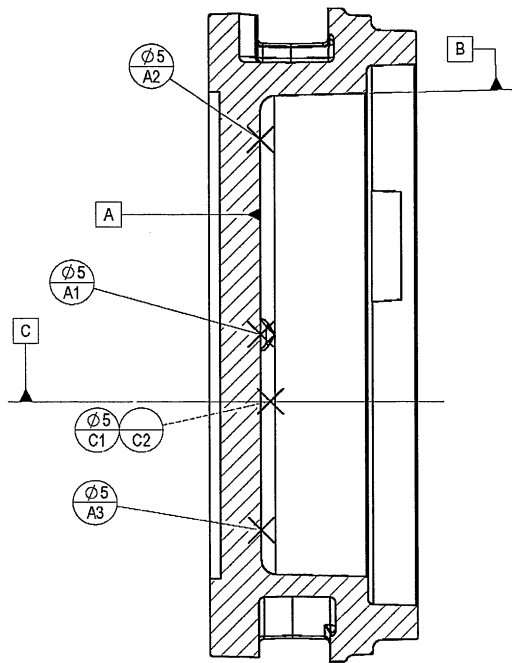
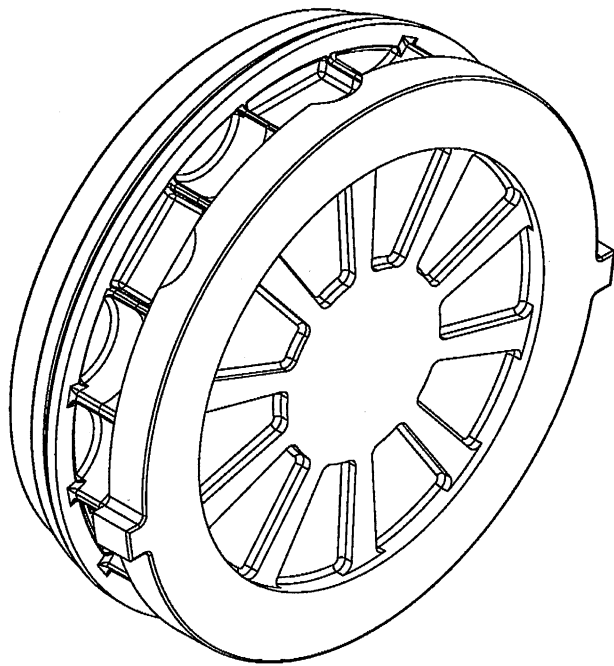
DWG Y17140A-00

SH 3

1

D

D



SECTION N-N
SCALE 1:2

C

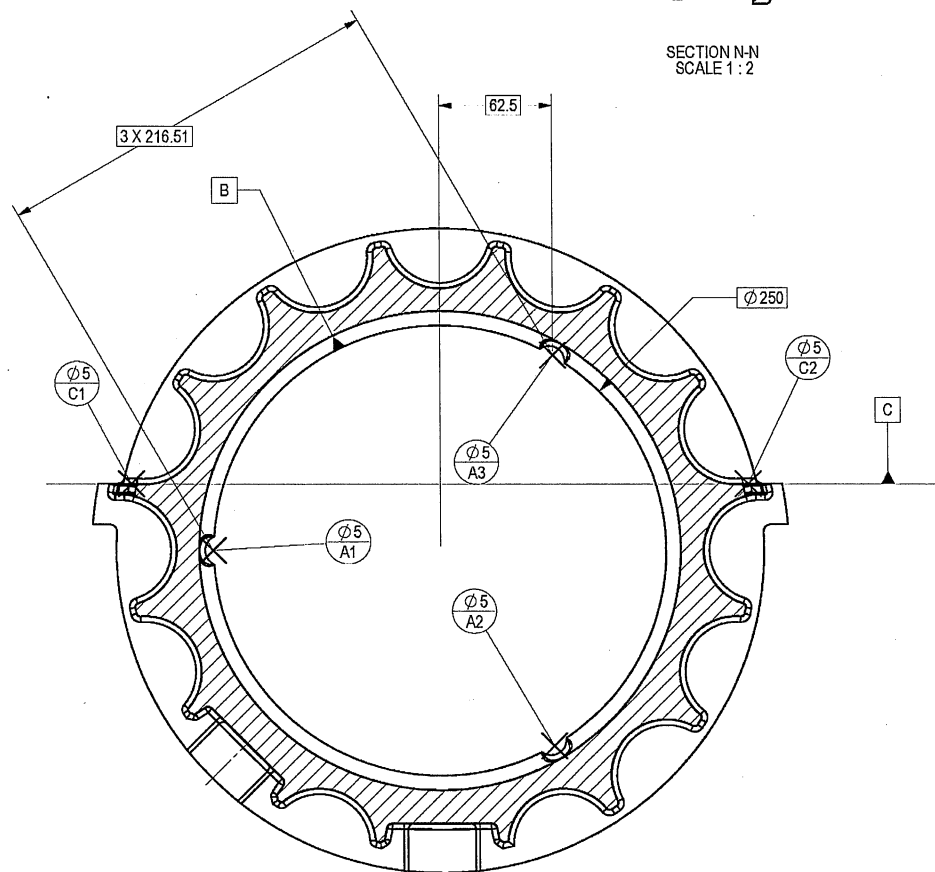
C

→

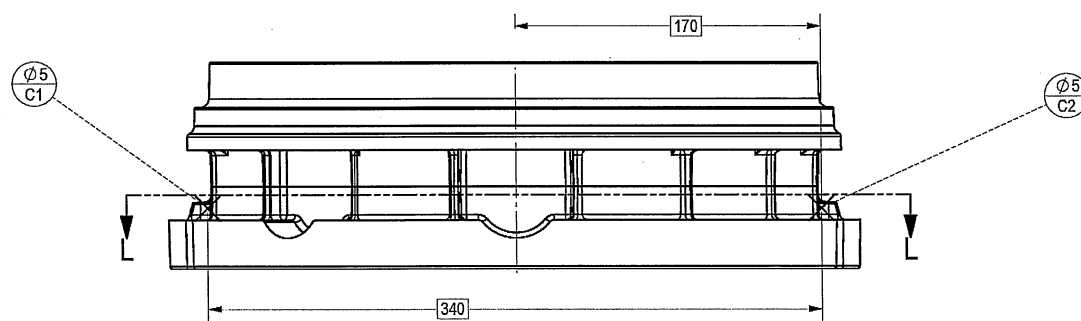
←

B

B



SECTION L-L
SCALE 1:2



A

A

8

7

6

5

↑

4

3

2
PLM Control

1

SIZE D	CAGE CODE 2291A	DWG NO Y17140A-00	REV --
SCALE 1:1		AUTOMATED DRAWING (SW)	
			SHEET 3 OF 3

OFT

ASSEMBLY PARTS LIST

Assembly Parts List For: Y17140A-00

Rev: -

Status: Released

Description: BASE, MACH

FN	CMD	PART NUM	ECO	DESCRIPTION	MB	QTY	U/M	REF. DES./REMARKS	MFG. PN / CUSTOMER	LA	LI
1	CS	Y17411A-00		BASE, CASTING	P	1	Each				