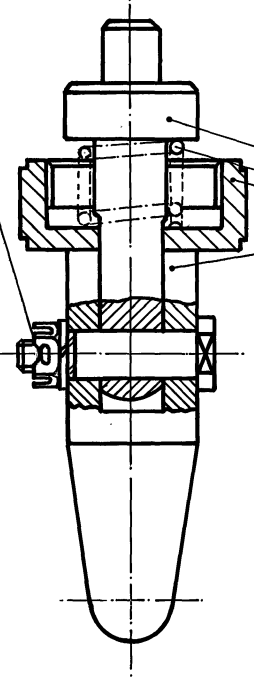
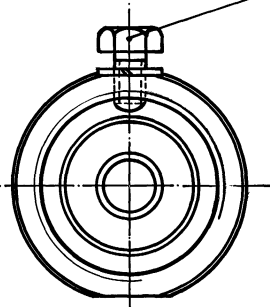


DS CAT No. **1015-000724**

FOR EXPLANATION OF DIMENSIONING, ETC; SEE ARDE NOTE SHT No.1
DIMNS ARE IN mm UNLESS OTHERWISE STATED

5305-002267-1
SCREW METRIC HEX. HD. COARSE PITCH PRECISION
STEEL, 8.8, M6 X 10^{mm} LONG (IS: 1364)
5310-001497-1
WASHER, SPRING SINGLE COIL TYPE 'A'
STEEL PHOSPHATED, NOMINAL SIZE, M6 (IS: 3063)

5340-015300-1
5360-007186-1
5340-014954-1
1015-000726-1



5306-030059-1
5310-001544-1
NUT, SLOTTED, HEX. PRECISION, STEEL, 8, PHOSPHATED
M6 (IS: 2232)
5315-000946-1
PIN, COTTER, SPLIT STEEL 16X16^{mm} (IS: 549)
5310-001497-1
WASHER, SPRING SINGLE COIL TYPE 'A'
STEEL PHOSPHATED, NOMINAL SIZE, M6 (IS: 3063)

19.8.16	19522-W	DS CAT Nos AMENDED	DRAWN :-	CHD :-	IFL 510, IFL 511 - A
11.2.2000		RETRACED WITHOUT CHANGE	TRACED :-	CHD :-	ASSY DRG :- 1015-000709
		PREV DC Nos: 15961-W & 16095-W/DT. 23.12.83		AHSP	DATE :- 10.4.70
			DO	FOR CQA(W)	SCALE :- 1:1
			DO	FOR CQA(W)	ESTD mass :-

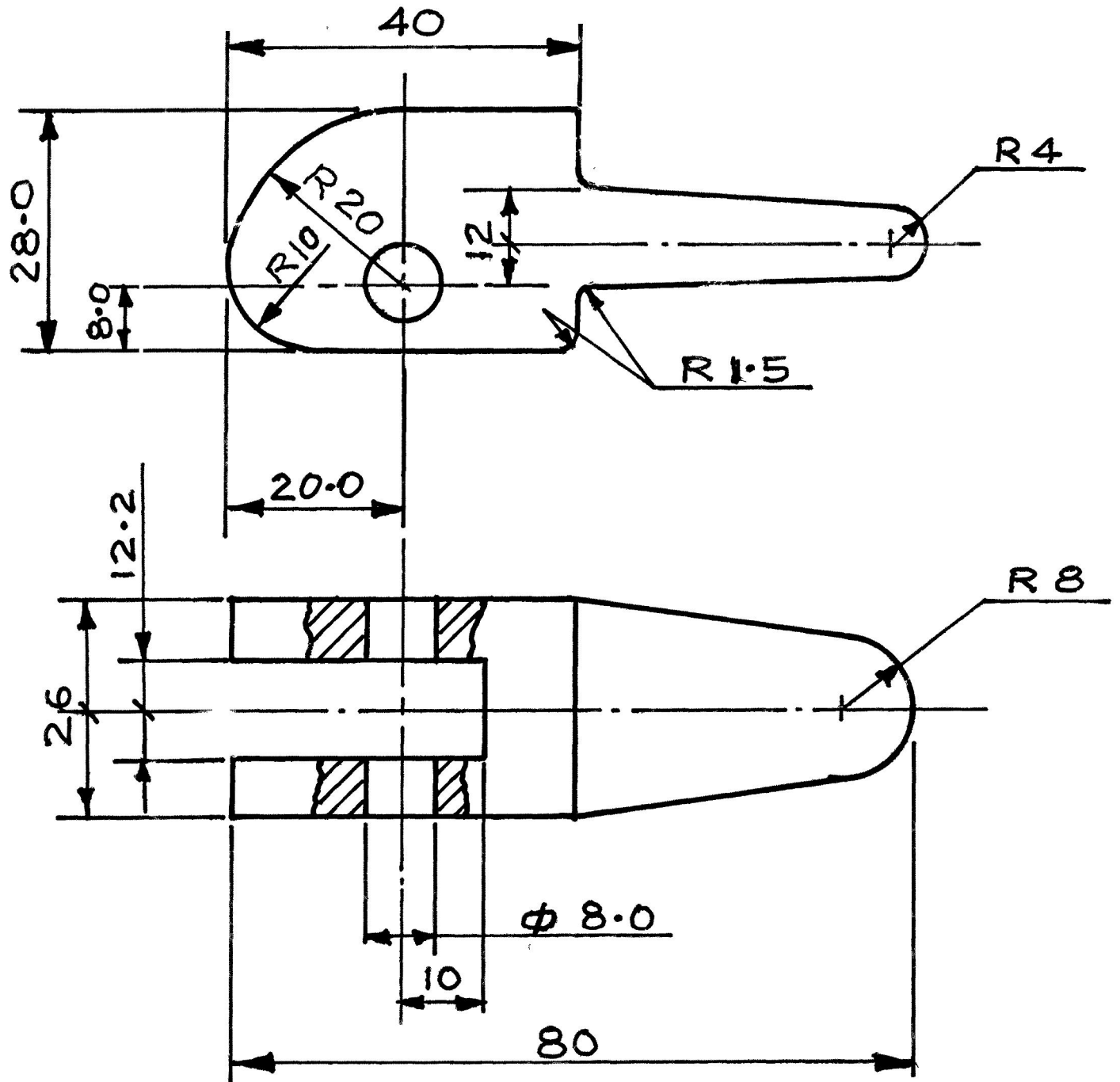
DESIGN No. **D6P-1904 SA**
PART No. **IFL-804 SA**
DS CAT No. **1015-000724**

PLUNGER, LOCKING

DS CAT No.

1015-000726

FOR EXPLANATION OF DIMENSIONING ETC. SEE ARDE NOTE SHT.No-1
DIMENSIONS ARE IN mm UNLESS OTHERWISE STATED.



PROTECTIVE FINISH:-

TO BE PHOSPHATED AS PER SPEC.

JSS: 0465-01: 1988, CLASS II, FINISH(J)

MATL:- IS:5517-1993 GRADE 45C8 OR BS: 970 Pt-1-1983 GRADE

080M46 NORMALISED.



DATE	AUTHORITY	ZONE	NATURE	SIG AHSP	SIG DO
12-9-17	1961S-W		MATL AMENDED		
18-11-95			RETRACED WITHOUT CHANGE		
			PREV DC Nos. 15961-W, 16095-W & 17579-W/DT.20.4.93		

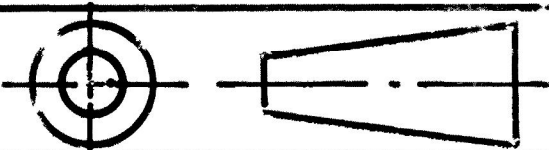
AMENDMENTS

DRG SEALED:- 16095-W
23-12-83 DO CQA(W)

SCALE:- 1:1 ESTD MASS:- DATE:-10.4.70

MATL:- AS ABOVE

ASSY DRG.
1015-000724



LATCH

CQA(W) JABALPUR

DRAWN:-

CHD:-

TRACED:- NSC

CHD: *[Signature]*

[Signature]

CHIEF D'MAN

DO

AHSP

FOR CQA(W)

DESIGN No.

D6P-190402

PART No.

IFL 7170

DS CAT No.

1015-000726

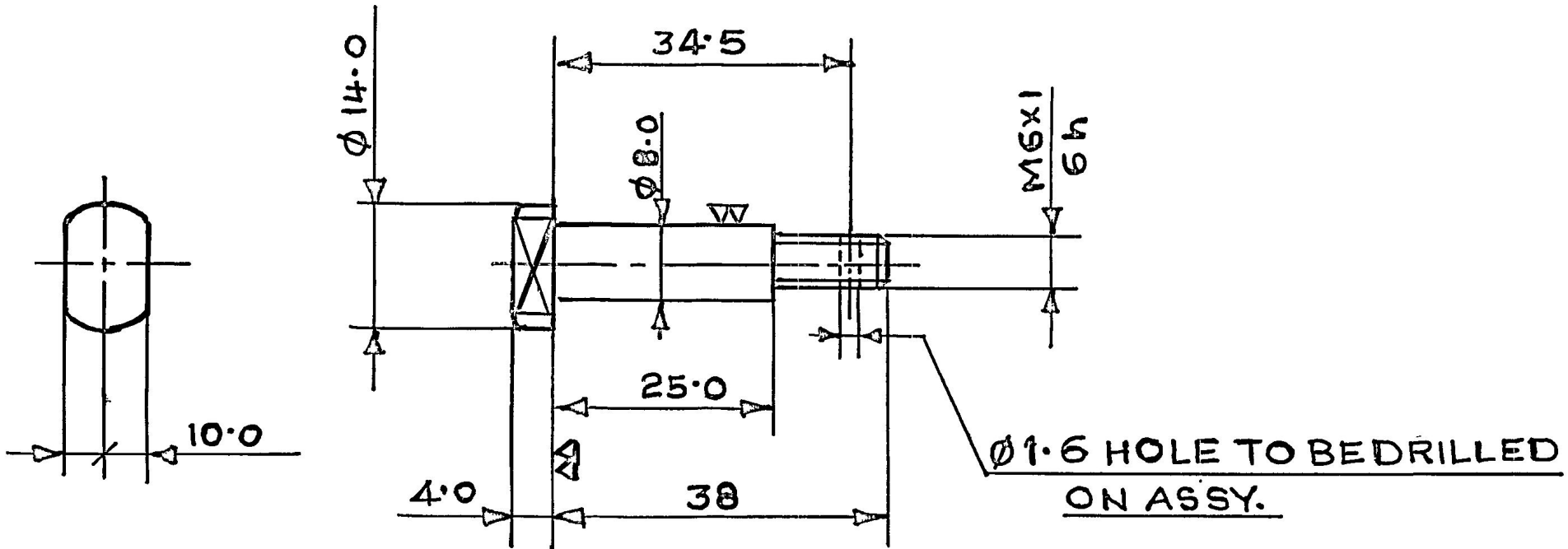
DS CAT No.

5306-030059

FOR EXPLANATION OF DIMENSIONING ETC.
SEE ARDE NOTE SHT. NO.1.

DIMENSIONS ARE IN mm UNLESS OTHERWISE STATED

THREADS CONFORM TO IS:4218



PROTECTIVE FINISH:-

TO BE PHOSPHATED AS PER SPEC: JSS:0465-01-1988, CLASS II, FINISH(J).



13-6-17	19603-W		MATL AMENDED.		MM
---------	---------	--	---------------	--	----

2 12/03	18825-W		HINDI NOMEN ADDED		MM
---------	---------	--	-------------------	--	----

27 3/99			RETRACED WITHOUT CHANGE		MM
---------	--	--	-------------------------	--	----

			PREV. D.C NOS:-		
--	--	--	-----------------	--	--

			16095-W, 15961-W & 17579-W		
--	--	--	----------------------------	--	--

			W.P.T. 20-4-93		
--	--	--	----------------	--	--

DATE	AUTHORITY	ZONE	NATURE	SIG AHSP	SIG DO
------	-----------	------	--------	----------	--------

--	--	--	--	--	--

AMENDMENTS

DRG SEALED:- DC(i) No. 16095-W

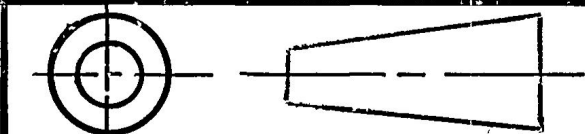
DATED: 23-12-83 DO CQA(W)

SCALE:- 1:1	ESTD MASS:-	DATE:- 28-12-71
-------------	-------------	-----------------

MATL:- IS: 4431-1978, GRADE 40C1DS18(B)

ASSY DRG:-

1015-000724



BOLT SHOULDER बोल्ट शोल्डर

CQA(W) JABALPUR

DRAWN:- CHD:-

TRACED:- SR SINGH CHD:- A S Uth

Daddikerf

CHIEF D'MAN DO

AHSP

FOR CQA(W)

DESIGN No.

D6P-190406

PART No.

IFL-7171

DS CAT No.

5306-030059

19522-W
19-8-16
19017-W
27-12-06

DS CAT No. AMENDED

NOMEN AMENDED

4

3

2

1

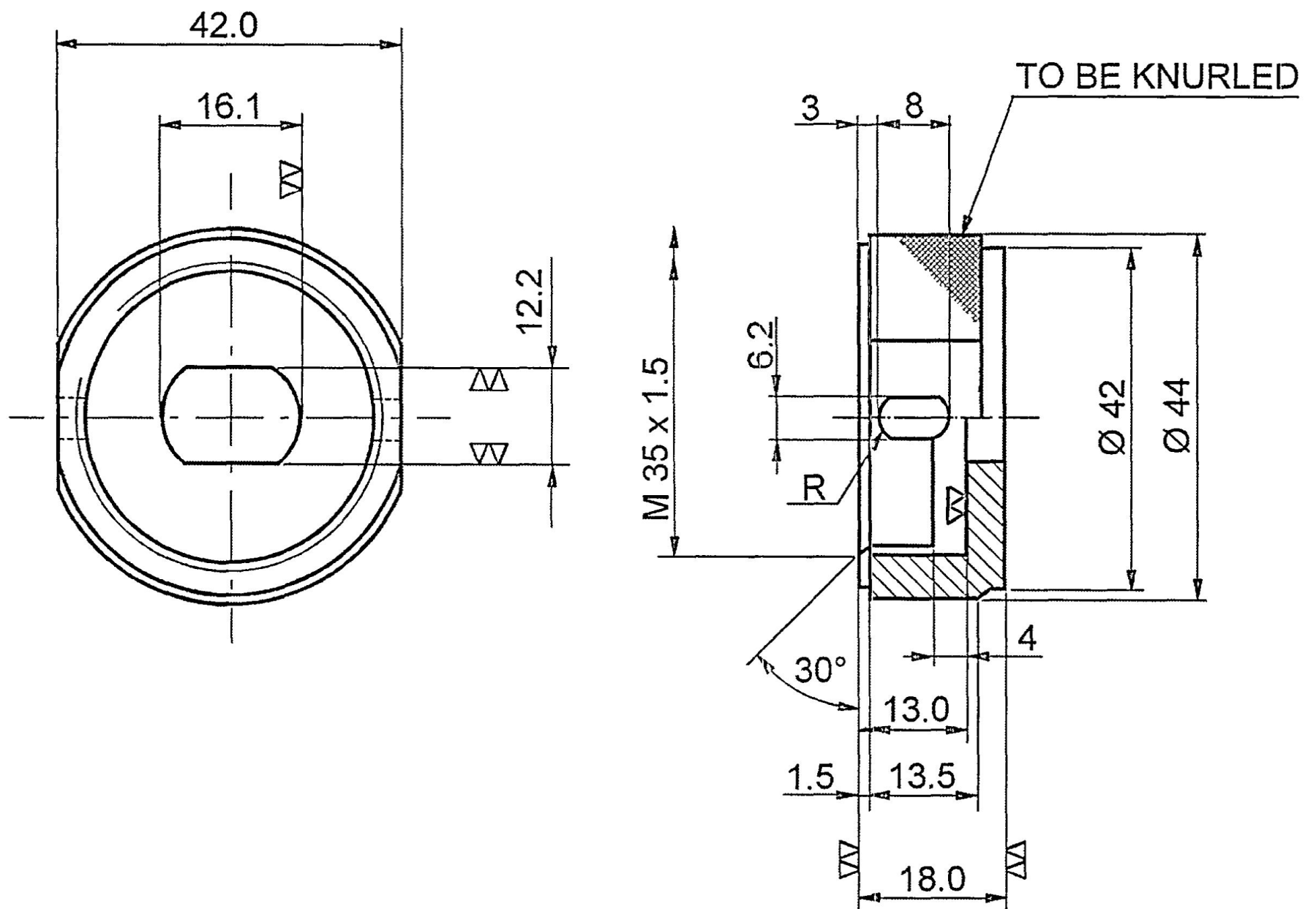
DS CAT No.

FOR EXPLANATION OF DIMENSIONING ETC SEE ARDE NOTE SHT No. 1

5340-014954

DIMENSIONS ARE IN mm UNLESS OTHERWISE STATED

THREADS CONFORM TO IS : 4218



MATL :- IS : 5517-1993 GDE 40 C8 (LRS 63) OR BS: 970 Pt-1-1983 GDE
O80 M40

PROTECTIVE FINISH :- PHOSPHATING TO SPEC JSS : 0465 - 01 - 1988, CLASS II
FINISH (j).

▽ (▽▽)

						CQA(W), JABALPUR	
13-6-17	19603W	MATL AMENDED			MI	DRN	CHD
15-5-17		SCANNED & PRINTED WITHOUT CHANGE				SCANNED - PKA	CHD <i>Shishu</i>
DATE	AUTH	ZONE	AMENDMENTS	SIG AHSP	SIG DO		AHSP
PREV DC Nos-15961-W, 16095-W, 17579-W, 18885-W, 19004-W & 19024-W DT 22-01-07						DO	FOR CQAW
DRG SEALED:- 16095-W DT 23-12-83						ASSY DRG 1015-000724	
SCALE:- 1:1		ESTD mass:-		DATE:- 10-4-70		DESIGN No D6P - 190401	
MATERIAL:- AS ABOVE						PART No IFL 7169	
PROT FINISH:- AS ABOVE						DS CAT No 5340-014954	
RETAINER HELICAL COMPRESSION SPRING							

रिटेनर हेलीकल कम्प्रेसन स्प्रिंग

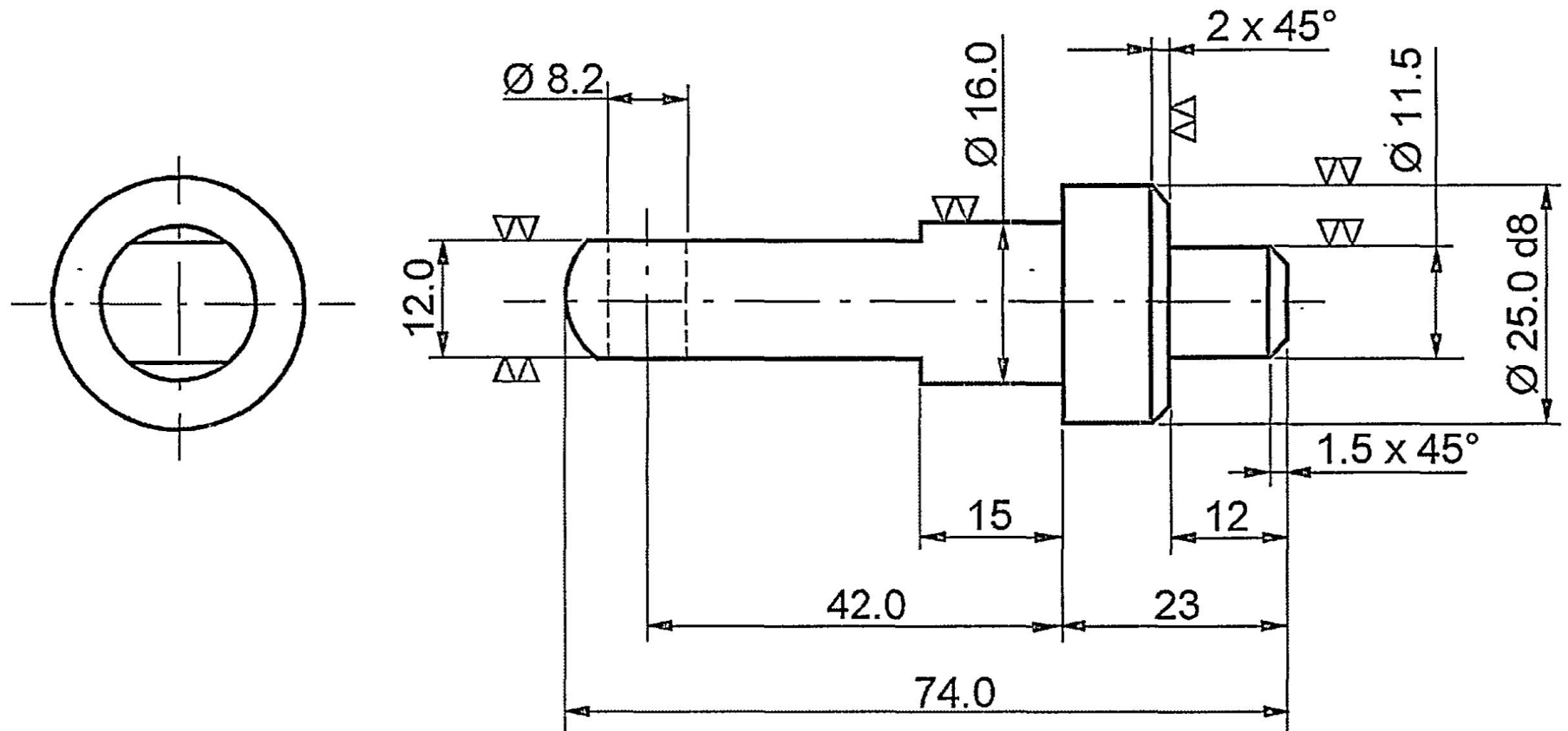
DS CAT No.

5340-015300

FOR EXPLANATION OF DIMENSIONING ETC, SEE ARDE NOTE SHT No.1
DIMNS ARE IN mm UNLESS OTHERWISE STATED

NOMINAL SIZE & FIT	DEVIATION
Ø 25.0 d8	- 0.065 - 0.098

8 SPHERICAL



MATL :- IS:5517-1993 Gde 45 C 8 OR BS:970,Pt-1, 1983 Gde 080 M 40 NORMALISED
NOTE :- TO BE PHOSPHATED AS PER SPEC JSS:0465-01-1988 CLASS II FINISH (j)

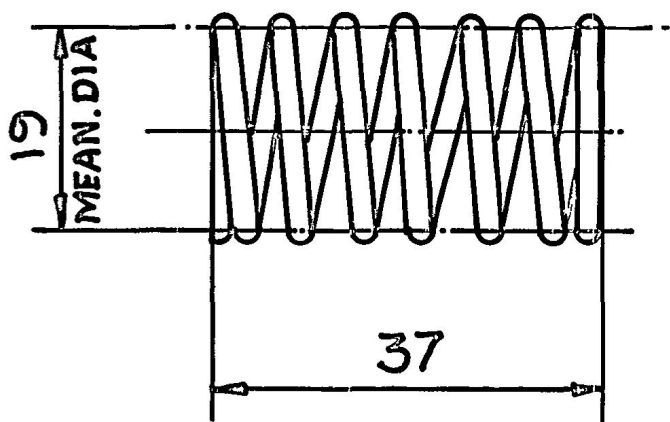
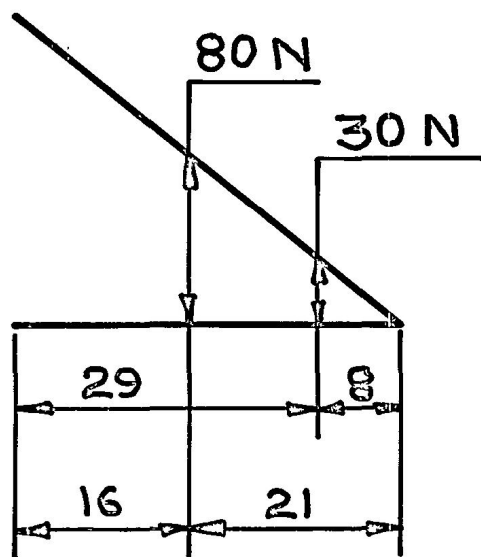
∇ (∇)

					CQA(W), JABALPUR	
					DRN	CHD
					SCANNED - PKA	CHD
					AHSP	
					DO FOR CQAW	
PREV DC Nos-15961-W,16095-W,17579-W,18885-W,19004-W & 19564-W DT 18-01-17					ASSY DRG	
DRG SEALED - 16095-W DT 23-12-83					1015-000724	
SCALE - 1:1					DESIGN No	
ESTD mass					D6P 190403	
DATE - 10-4-70					PART No	
MATERIAL - AS ABOVE					IFL 7172	
PROT FINISH -AS ABOVE					DS CAT No	
PLUNGER DETENT					5340-015300	
प्लंजर डिटेंट						

D.S.CAT. No:-

DIMENSIONS ARE IN mm. UNLESS OTHER-WISE STATED.

5360-007186



NOTES:-

COMPRESSION TEST AS PER BS:1726 Pt-I

100% FOR FIRST 20 SPRINGS & 10% FOR

REMAINING PRODUCTION OR AS ORDERED
BY AHSP.

SPRINGS TO CONFORM TO BS:1726 Pt I
CATEGORY III, CLASS 'B'

ONE COIL AT EACH END TO BE CLOSED IN &
GROUND SQUARE WITH THE AXIS
LEAVING 3/4 COIL NON-EFFECTIVE

- (1). DIA OF WIRE _____ 2.
(2). No. OF EFFECTIVE COILS _____ 6.
(3). WOUND _____ RH OR LH.

PROTECTIVE FINISH:-

TO BE PHOSPHATED AS PER SPEC:- JSS: 0465-01:1988, CLASS II FINISH(J)

13-06-17 19603-W MATL AMENDED

3 10/06 19004-W NOMEN & DS CAT No AMENDED

1 10/04 18885-W HINDI NOMEN ADDED

8-11-95 RETRACED WITHOUT CHANGE
PREV. D.C.NoS:- 15961-W,
16095-W & 17579-W/20-4-93

DATE	AUTH.	ZONE	NATURE	SIG. AHSP	SIG. DO
------	-------	------	--------	-----------	---------

AMENDMENTS

DRG. SEALED:- D.C.No:- 16095-W
DT:- 23-12-83, D.O. CQA(W)

SCALE:- 1:1 ESTD mass:- DATE:- 10-4-70

MATL:- IS: 4454 Pt I: 2001 GDE: DH

ASSY DRG:-
1015-000724



SPRING HELICAL COMPRESSION
स्प्रिंग हेलिकल कम्पेशन

CQA(W), JABALPUR

DRN:- CHD:-
TCD:- Sanjay CHD: Shankar

RRawal
C/D' MAN D.O

AHSP FOR CQA(W)

DESIGN No:-
D 6P-190405

PART No:-
IFL-7173

D S CAT No
5360-007186