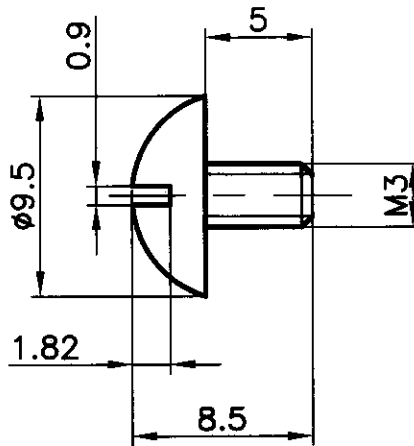



DIMENSIONS ARE IN mm.
UNTOLERATED DIMNS. AS PER IS : 2102 (MED)
SHARP CORNERS SHOULD BE BLUNT TO R 0.5
PROTECTIVE FINISH : PHOSPATED TO SPECIFICATION. JSS : 0465-01-1988
CLASS-I (ACCELERATED) OIL FINISH.



MATERIAL: IS: 1875-1992 CLA.4 DESIG. 45 C8
(OR) BS:970. PART-1. 1983 GRADE 080M40.
ALT. MATL: En 9
HARDNESS:- 24-32 HRC

QTY. REQD:- 2 Nos. PER GUN.

PART NO.	DESCRIPTIONS	NO OFF	MATERIAL	TREATMENT	REMARKS
	SIGNATURE & DATE.	SUB: <u>SCREW TRIGGER</u>			SCALE
TRACED	<i>S. Venkatesh</i>	FOR: <u>REAR FRAME & TRIGGER MECH. GROUP.</u>			NTS
DRAWN		OF: <u>38mm MSL</u>			STORE DRG.NO.
CHECKED	<i>[Signature]</i>	DES.REF.NO.			-
HOS/D&DO		DRG. No.: <u>33P 3068</u>			OPERATION NO.
NODAL OFFICER FOR MSL	<i>[Signature]</i>	 ORDNANCE FACTORY TIRUCHIRAPPALLI-16.			-
OFFICER/D&DO					SHEETS: 1
AMENDMENTS	SIG. & DATE	APPROVED ON. <u>22/12/2014</u>			SHEET No.: 1