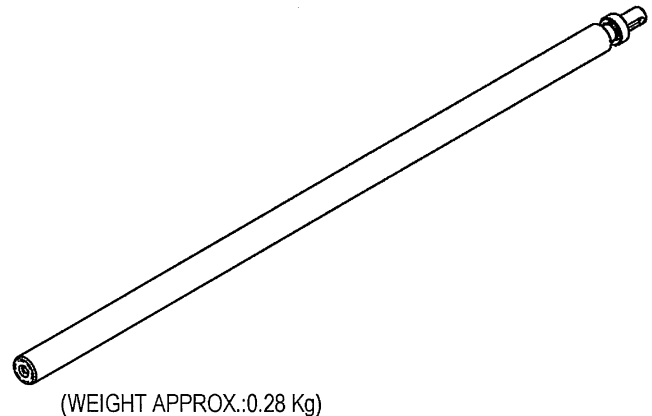
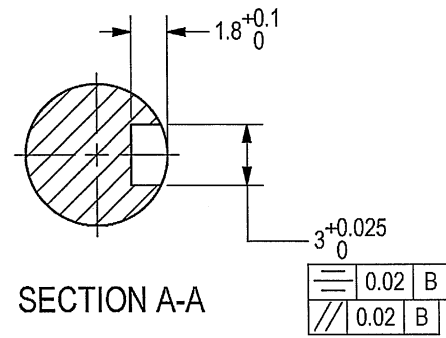
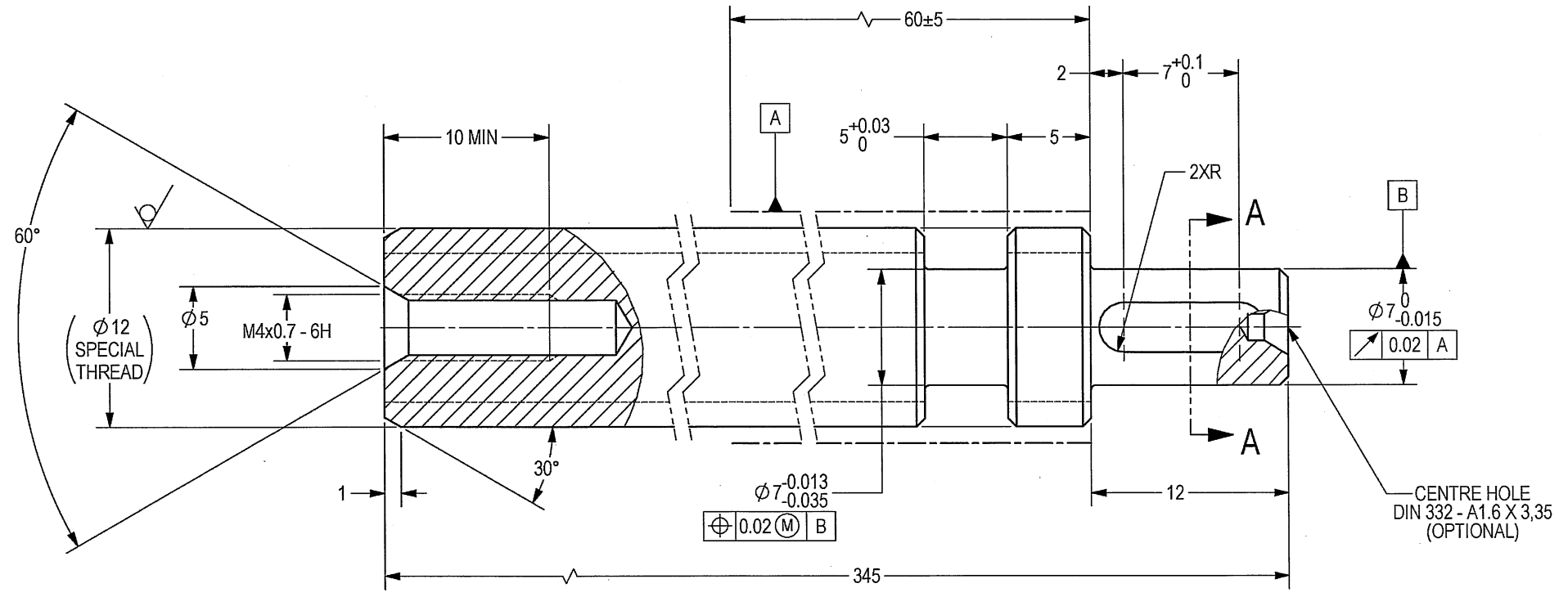


THIS DOCUMENT AND THE INFORMATION CONTAINED IN IT ARE PROPRIETARY AND CONFIDENTIAL TO OFT. NO PERSON OR ENTITY IS ALLOWED TO COPY, REPRINT, REPRODUCE OR PUBLISH ANY PART OF THIS DOCUMENT, NOR DISCLOSE ITS CONTENTS TO OTHERS, NOR MAKE ANY USE OF IT, NOR ALLOW OR ASSIST OTHERS TO MAKE ANY USE OF IT UNLESS BY THE PRIOR WRITTEN EXPRESS AUTHORIZATION OF OFT AND THEN ONLY TO THE EXTENT AUTHORIZED. COPYRIGHT-OFT.

SHEET REV STATUS  
ALL SHEETS ARE THE SAME REVISION

REVISION RECORD				
REV	ECO	DESCRIPTION	DATE	APVD
02		Freeze	28-Nov-13	
03		Freeze	30-Dec-13	
04		Restricted	23-Jul-14	L. Goldshtein
05	VY174/00	Restricted	02-Jun-15	D. Nave
--	T00065	Identical To Previous	09-Apr-18	L. Goldshtein

- NOTES:
- INTERPRET THIS DRAWING IAW ASME Y14.100M.
  - MATERIAL: SEE F/N 1 (HARDENED ALLOY STEEL - FOR REFERENCE ONLY).
  - UNLESS OTHERWISE SPECIFIED, UNDEFINED MACHINED FILLET RADII SHALL BE 0.2-.0.3.
  - DEBURR AND REMOVE SHARP EDGES, APPROX. 0.3X45 Deg.
  - GENERAL TOLERANCES ACCORDING TO ISO 2768-m.
  - QUALITY ASSURANCE PROVISIONS:
    - QUALITY ASSURANCE PROVISIONS FOR THIS ITEM PER RDMQD00012P.
  - PARENTHETICAL FIGURES ARE FOR REFERENCE ONLY.
  - PACKAGING AND PACKING: THE FINISHED PART SHALL BE PRESERVED AND PACKAGED IN ACCORDANCE WITH MANUFACTURER'S BEST COMMERCIAL PRACTICE.
  - IDENTIFY PER MIL-STD-130 PARA 4.1.B, BY LABELING ITS CONTAINER WITH THE PART NUMBER. CHARACTERS MINIMUM TEXT HEIGHT 1.25 MM.



ALTERED ITEM DRAWING  
SEE ATTACHED MEDIA  
SEE SEPARATE PARTS LIST

UNLESS OTHERWISE SPECIFIED		SIGNATURE	DATE	ORDNANCE FACTORY TIRUCHIRAPPALLI	
DIMENSIONS ARE IN MM PER ASME Y14.5 - 2009		DRAWN	11/9/20	FOR: ROTOR ASSY	
TOLERANCES		CHECKED		TITLE SPINDLE, ALTERED	
LINEAR	ANGULAR	HOS/DDO	17/09/20	FOR: 12.7MM SRCG	
SEE NOTE 5	SEE NOTE 5	OFFICER/PRODN		SIZE	CAGE CODE
1st ANGLE PROJECTION		OFFICER/QC		C	2291A
SURFACE TEXTURE IN MicroMeter		OFFICER/DDO		DWG NO	074260A-00
				SCALE	4:1
				AUTOMATED DRAWING (SW)	
				SHEET 1 OF 1	
				STATUS WIP	

DWG NO 074260A-00  
SH 1

OFT

ASSEMBLY PARTS LIST

Assembly Parts List For: 074260A-00

Rev: -

Status: Released

Description: SPINDLE, ALTERED

FN	CMD	PART NUM	ECO	DESCRIPTION	MB	QTY	U/M	REF. DES./REMARKS	MFG. PN / CUSTOMER	LA	LI
1	HO	00111896N		SHAFT SCREW F/BALL DRIVE D12X400	P	1	Each		46172-KGT12X4RH400G9OG		