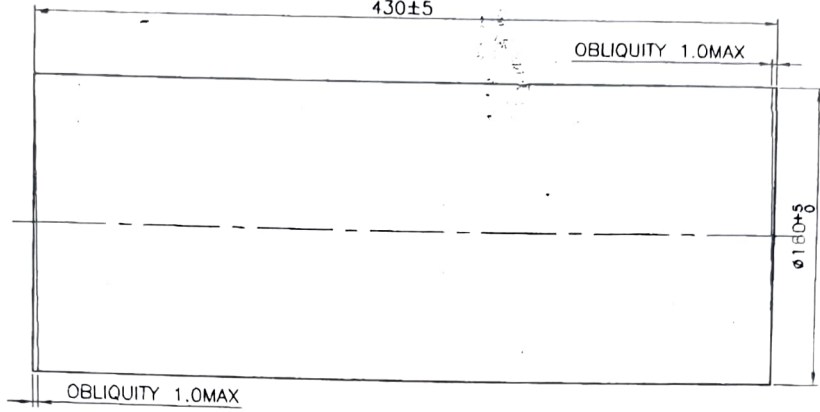


DRG. NO: SM-1349A

TOL. ON UNTOLERATED DIMNS. ARE AS PER MEDIUM CLASS TO IS: 2102

PROVISIONAL

INPUT



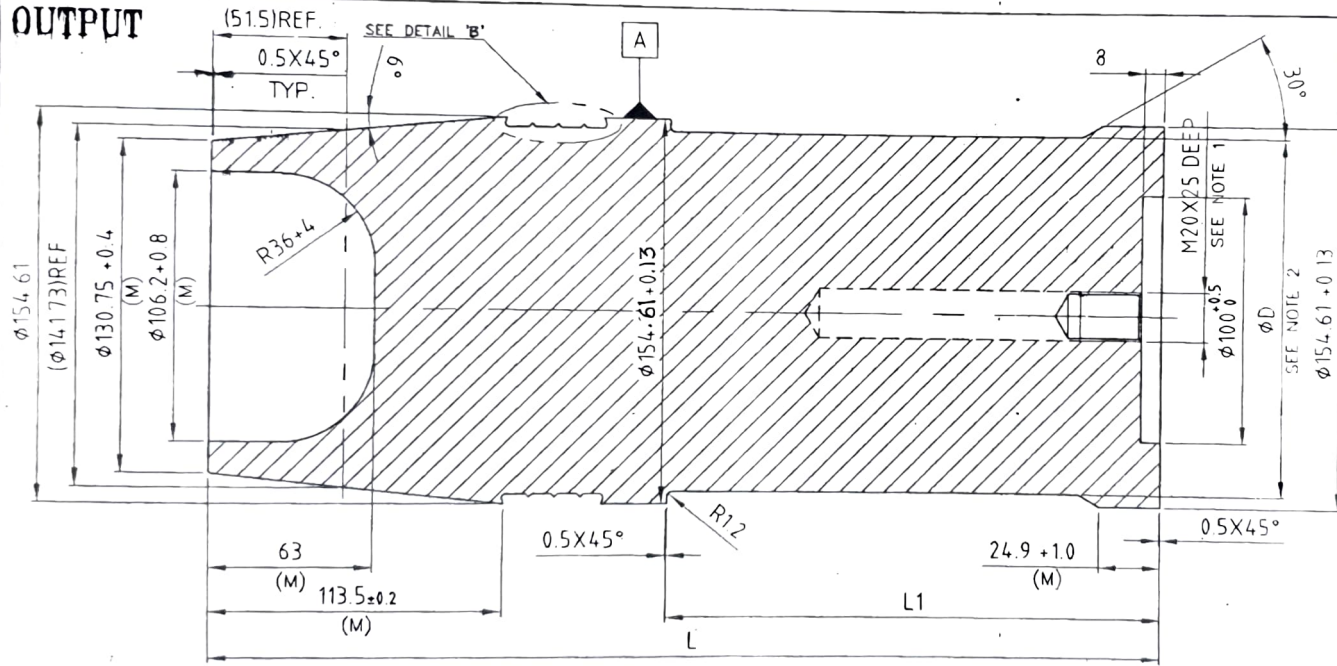
APPOX. WEIGHT - 70.00+0.25 Kg

MATERIAL:-

BAR, ROUND, STEEL TO BS 970
PART-I, 1991- 070M20 (NORMALIZED)
OR JSS-9510-1, 1982 GRADE SS/B-27

NOTE:-
REMOVE SHARP CORNERS & EDGES.

OUTPUT



MATERIAL - BAR, ROUND, STEEL TO BS 970 PART-I, 1991- 070M20 (NORMALIZED) OR JSS-9510-1, 1982 GRADE SS/B-27.

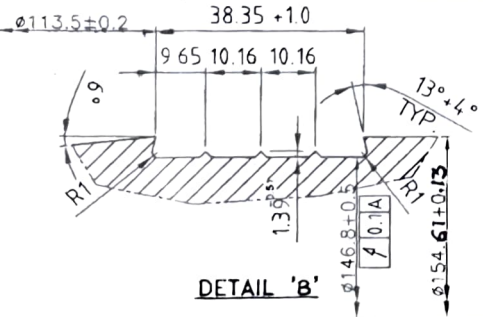
NOTES -

- 1) TO ADJUST TO FINISHED MASS, A Ø18 HOLE MAY BE DRILLED TO MAX. OF 150mm DEEP.
- 2) DIAMETER IS NOT CRITICAL & COULD BE VARIED TO ACCOMPLISH CORRECT MASS. THIS DIAMETER SHOULD NOT BE MORE THAN Ø149.
- 3) CRITICAL DIMENSIONS - MARKED AS 'C' MAJOR DIMENSIONS - MARKED AS 'M'
- 4) PACKING & DESPATCH - THE PACKAGE OF SLUG SHALL PROTECT THEM AGAINST ATMOSPHERIC ACTION ETC. AND AGAINST DAMAGE DURING HANDLING, TRANSPORTING AND STORAGE.
- 5) THE FIRM WILL PREPARE QUALITY PLAN & GET IT APPROVED FROM OFAJ BEFORE STARTING BULK PRODUCTION.

TOTAL MASS CAN BE OBTAINED BY CHANGE IN DIMENSIONS AS BELOW

SLUG REPRESENTING SHELL 155mm ERFB	WEIGHT (Kg)	DIMENSION (mm)		
		L	L1	D
SLUG	44.80-0.02	368	190+1	Ø147
SLUG	46.80-0.02	388	210+1	Ø145
SLUG	47.20-0.02	388	210+1	Ø146.5

REF. DRG. NO. 03986--400015-203



REV.NO.	DATE	NOMENCLATURE	SIGN.
A	01/08/23	Ø154.61±0.13 AT L1 WAS Ø154.94±0.26.	

DIMENSIONS ARE IN mm.		
THIRD ANGLE PROJECTION		
SCALE - 1:2		
2023	NAME	DATE
DRAWN	<i>[Signature]</i>	31/05/2023
CHECKED	<i>[Signature]</i>	31.05.2023
HOS/CDD	<i>[Signature]</i>	31.5.23
HOS/SM	<i>[Signature]</i>	31.5.23
DO/SM	<i>[Signature]</i>	31.05.23

MATERIAL- AS ABOVE
NOMENCLATURE
155mm SLUG INPUT & OUTPUT BEFORE KRURLING (FOR TRADE)

आर्डनेन्स फॅक्टरी अम्बाझरी
ORDNANCE FACTORY AMBAZHARI
DRG. NO :
SM-1349A
REVIEW NO:
SHEET NO- 1
NO OF SHEETS- 1
COMPT. SLUG