

4

3

2

1

THIS DOCUMENT AND THE INFORMATION CONTAINED IN IT ARE PROPRIETARY AND CONFIDENTIAL TO OFT. NO PERSON OR ENTITY IS ALLOWED TO COPY, REPRINT, REPRODUCE OR PUBLISH ANY PART OF THIS DOCUMENT, NOR DISCLOSE ITS CONTENTS TO OTHERS, NOR MAKE ANY USE OF IT, NOR ALLOW OR ASSIST OTHERS TO MAKE ANY USE OF IT UNLESS BY THE PRIOR WRITTEN EXPRESS AUTHORIZATION OF OFT AND THEN ONLY TO THE EXTENT AUTHORIZED. COPYRIGHT-OFT.

Designation	Description	Permissible deviations for basic size range							
		0.5 UP TO 3	over 3 UP TO 6	over 6 UP TO 30	over 30 UP TO 120	over 120 UP TO 400	over 400 UP TO 1000	over 1000 UP TO 2000	over 2000 UP TO 4000
f	fine	±0.05	±0.05	±0.1	±0.15	±0.2	±0.3	±0.5	—
m	medium	±0.1	±0.1	±0.2	±0.3	±0.5	±0.8	±1.2	±2
c	coarse	±0.2	±0.3	±0.5	±0.8	±1.2	±2	±3	±4
v	very coarse	—	±0.5	±1	±1.5	±2.5	±4	±6	±8

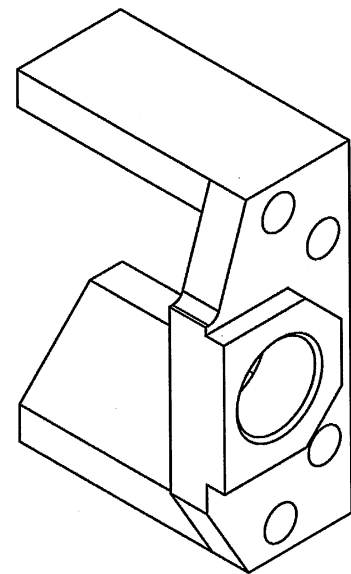
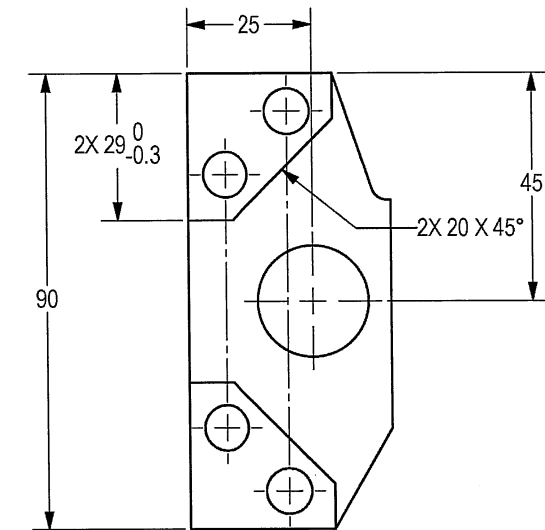
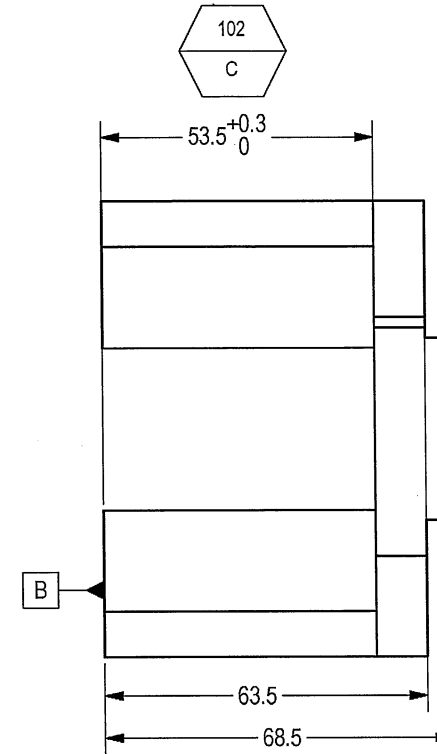
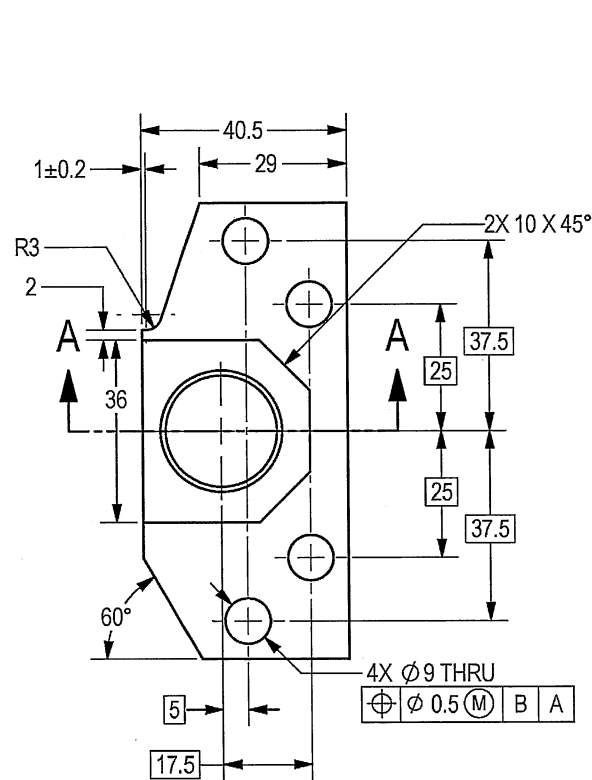
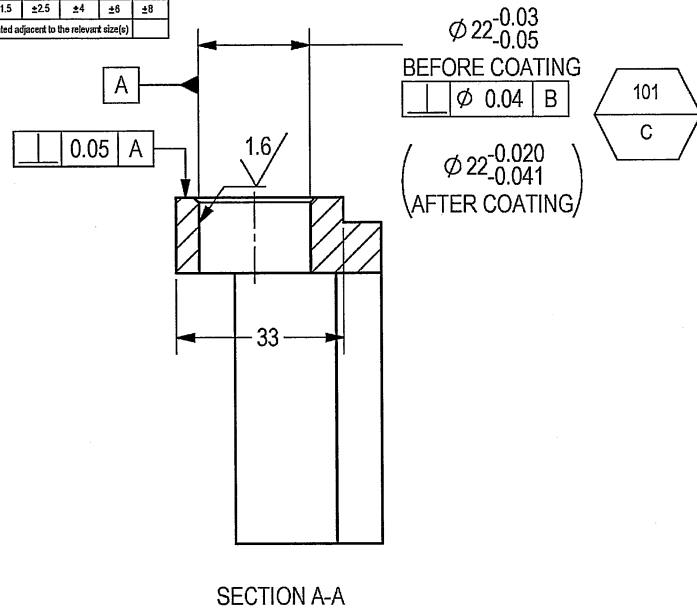
For nominal sizes below 0.5 mm, the deviations shall be indicated adjacent to the relevant size(s)

SHEET REV STATUS
ALL SHEETS ARE THE SAME REVISION

REVISION RECORD				
REV	ECO	DESCRIPTION	DATE	APVD
01		Freeze	14-Jun-12	
02		Freeze	13-Nov-12	
03		Restricted	11-Dec-13	
--	T00084	Identical To Previous Released	09-Apr-18	L. Goldshtein

NOTES :

- INTERPRET THIS DRAWING IAW ASME Y14.100M.
- MATERIAL: STEEL ALLOY BAR SAE 4130 PER SAE-AMS-S-6758 OR SAE 4340 PER SAE-AMS-S-5000. (EQUIVALENT MATERIAL IS PERMITTED AFTER ELBIT APPROVAL).
- HEAT TREATMENT: QUENCH AND TEMPER ENTIRE PART; HARDNESS 35±4 HRC.
- DEBURR AND REMOVE SHARP EDGES APPROX. 0.3X45°.
- GENERAL TOLERANCES ACCORDING TO ISO 2768-m
- PHOSPHATE COATING TYPE M, CLASS 2, 0.005-0.010 MM THICK PER MIL-DTL-16232.
- THE DIMENSIONS ARE BEFORE COATING.
- QUALITY ASSURANCE PROVISIONS:
 - 1 QUALITY ASSURANCE PROVISIONS FOR THIS ITEM PER RDMQD00012P.
 - 2 MAJOR CHARACTERISTICS NRS 101 TO 102.
- PACKAGING AND PACKING: THE FINISHED PART SHALL BE PRESERVED AND PACKAGED IN ACCORDANCE WITH COMMERCIAL PRACTICE.
- IDENTIFY PER MIL-STD-130 PARA 4.1.B, BY LABELING ITS CONTAINER WITH THE PART NUMBER. CHARACTERS MINIMUM TEXT HEIGHT 1.25 MM.



(WEIGHT APPROX.: 0.677 Kg.)

SEE ATTACHED MEDIA

UNLESS OTHERWISE SPECIFIED		SIGNATURE	DATE	ORDNANCE FACTORY TIRUCHIRAPPALLI	
DIMENSIONS ARE IN MM PER ASME Y14.5M - 1994		DRAWN	11/11/20	FOR: TRAVERSE ASSY	
TOLERANCES		CHECKED		TITLE	
LINEAR	ANGULAR	HOS/DDO	30/12/20	SUPPORT GEAR TRAVERSE	
SEE NOTE 5	SEE NOTE 5	OFFICER/PRODN		SIZE	CAGE CODE
1st ANGLE PROJECTION		OFFICER/QC		C	2291A
SURFACE TEXTURE IN Micro M		OFFICER/DDO		DWG NO	064406A-00
				SCALE	1:1
				AUTOMATED DRAWING (SW)	SHEET 1 OF 1