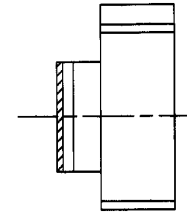
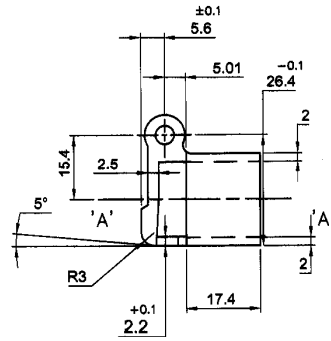
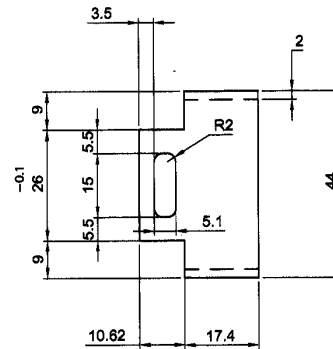
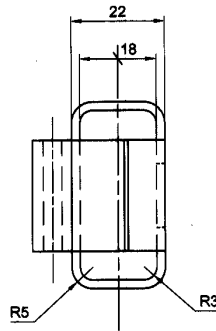


A
B
C
D
E
F



CROSS SECTIONAL FRONT VIEW
AT PLANE 'A-A'



MATERIAL : STEEL BS: 970 Pt.1 1983 Gr.070 M55 (OR) En-9
(OR) STEEL BS: 970 Pt.1 1983 Gr.080 M40 (OR) En-8
HARDNESS: 300 - 350 HV.

DIMENSIONS ARE IN mm.
 UNTOLERATED DIMNS. AS PER IS : 2102 (MED)
 SHARP CORNERS SHOULD BE BLUNT TO R 0.2
 INTERNAL CORNERS ARE R 0.3 MAX.
 PROTECTIVE FINISH : PHOSPATED TO SPECIFICATION.
 JSS : 0465-01-1988 CLASS-I (ACCELERATED) OIL FINISH.

SIGNATURE & DATE		SUB: BASE END PIECE		SCALE NTS	
TRACED		FOR: SIDE FOLDABLE BUTT		STORE DRG.NO.	
DRAWN		OF: TRICHY ASSAULT RIFLE		K-4101	
CHECKED <i>V.A</i>		DES.REF.NO.		OPERATION NO.	
OIC/D&DO		DRG. No.: TAR-K-4101			
OFFICER/PRODN.		ORDNANCE FACTORY TIRUCHIRAPPALLI-16.		SHEETS: 1	
OFFICER/D&DO <i>K</i>				SHEET No.: 1	
AMENDMENTS	SIG. & DATE	APPROVED ON: 11/01/2017			

A
B
C
D
E
F

DRG. NO. K-4102

BRITISH STANDARD- COLD DRAWN SEAMLESS STEEL PIPES

INDIAN STANDARD- COLD DRAWN SEAMLESS STEEL PIPES

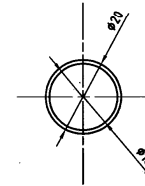
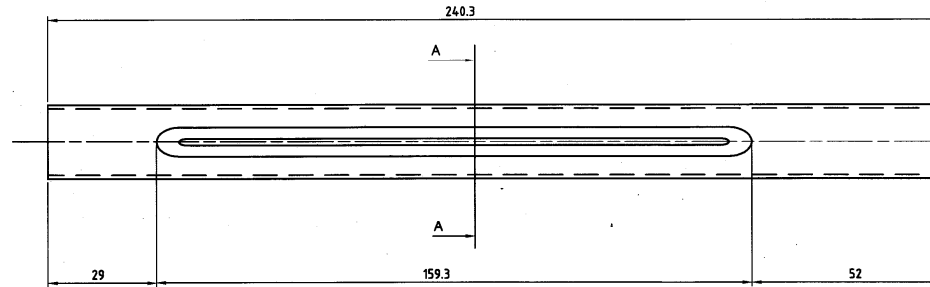
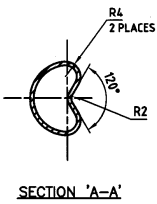
INDIAN STANDARD- CEW PIPES ALSO ACCEPTABLE

MATERIAL : BS 6323 PT 4: 1982 DES CFS 3 BK.
 (OR) BS 6323 PT 4: 1982 DES CFS 4 BK.
 (OR) BS 6323 PT 4: 1982 DES CFS 5 BK.
 (OR) BS 6323 PT 4: 1982 DES CFS 6 BK.
 (OR) BS 6323 PT 4: 1982 DES CFS 7 BK.
 (OR) BS 6323 PT 4: 1982 DES CFS 9 BK.
 (OR) BS 6323 PT 4: 1982 DES CFS 10 BK.
 (OR) BS 6323 PT 4: 1982 DES CFS 11 BK.

IS:3074:2005 SEC 2: CDS-1, ANNEALED
 IS:3074:2005 SEC 2: CDS-2, ANNEALED
 IS:3074:2005 SEC 2: CDS-3, ANNEALED
 IS:3074:2005 SEC 2: CDS-4, ANNEALED
 IS:3074:2005 SEC 2: CDS-6, ANNEALED
 IS:3074:2005 SEC 2: CDS-7, ANNEALED
 IS:3074:2005 SEC 2: CDS-9, ANNEALED

IS:3074:2005 SEC 2: CEW-1, ANNEALED
 IS:3074:2005 SEC 2: CEW-2, ANNEALED
 IS:3074:2005 SEC 2: CEW-3, ANNEALED

CEW PIPES:
 COLD DRAWN ELECTRIC RESISTANCE WELDED/HIGH
 FREQUENCY INDUCTION WELDED STEEL TUBES



PROTECTIVE FINISH:-
 PHOSPHATE TO SPECN. JSS 0465-01:1994, CLASS II.(ACCELERATED), OIL FINISH.

K-4102

1		UPPER ARM		1		AS ABOVE	
PART NO.	DESCRIPTIONS	NO OFF	MATERIAL	TREATMENT	REMARKS	SCALE	
					SUB: UPPER ARM	---	
					FOR: SIDE FOLDABLE BUTT	STORE DRG.NO.	
					OF: TRICHY ASSAULT RIFLE	K-4102	
					DES.REF.NO.	OPERATION NO.	
					DRG. No.: TAR-K-4102	---	
					ORDNANCE FACTORY TIRUCHIRAPPALLI-16.	SHEETS: 1	
						SHEET No.: 1	
AMENDMENTS	SIG. & DATE	APPROVED ON: 18.07.2016					

DRG. NO. K-4103

BRITISH STANDARD— COLD DRAWN SEAMLESS STEEL PIPES

- MATERIAL : BS 6323 PT 4: 1982 DES CFS 3 BK.
 (OR) BS 6323 PT 4: 1982 DES CFS 4 BK.
 (OR) BS 6323 PT 4: 1982 DES CFS 5 BK.
 (OR) BS 6323 PT 4: 1982 DES CFS 6 BK.
 (OR) BS 6323 PT 4: 1982 DES CFS 7 BK.
 (OR) BS 6323 PT 4: 1982 DES CFS 9 BK.
 (OR) BS 6323 PT 4: 1982 DES CFS 10 BK.
 (OR) BS 6323 PT 4: 1982 DES CFS 11 BK.

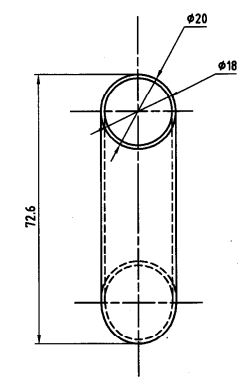
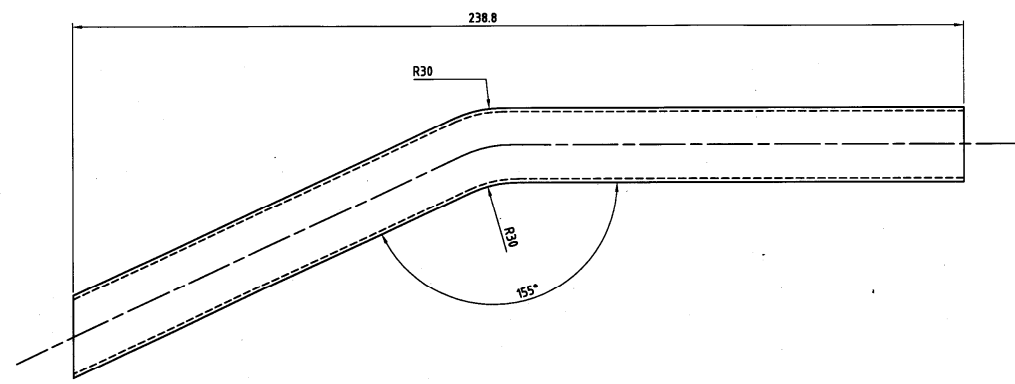
INDIAN STANDARD— COLD DRAWN SEAMLESS STEEL PIPES

- IS:3074:2005 SEC 2: CDS-1, ANNEALED
 IS:3074:2005 SEC 2: CDS-2, ANNEALED
 IS:3074:2005 SEC 2: CDS-3, ANNEALED
 IS:3074:2005 SEC 2: CDS-4, ANNEALED
 IS:3074:2005 SEC 2: CDS-6, ANNEALED
 IS:3074:2005 SEC 2: CDS-7, ANNEALED
 IS:3074:2005 SEC 2: CDS-9, ANNEALED

INDIAN STANDARD— CEW PIPES ALSO ACCEPTABLE

- IS:3074:2005 SEC 2: CEW-1, ANNEALED
 IS:3074:2005 SEC 2: CEW-2, ANNEALED
 IS:3074:2005 SEC 2: CEW-3, ANNEALED

CEW PIPES:
 COLD DRAWN ELECTRIC RESISTANCE WELDED/HIGH
 FREQUENCY INDUCTION WELDED STEEL TUBES

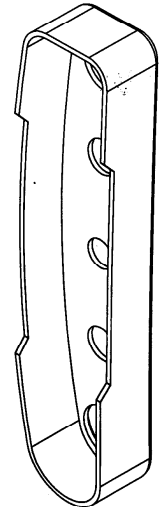
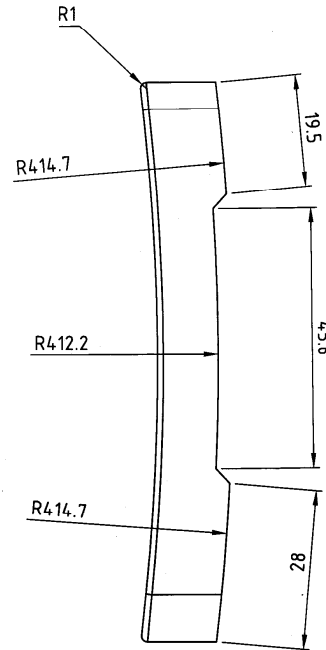
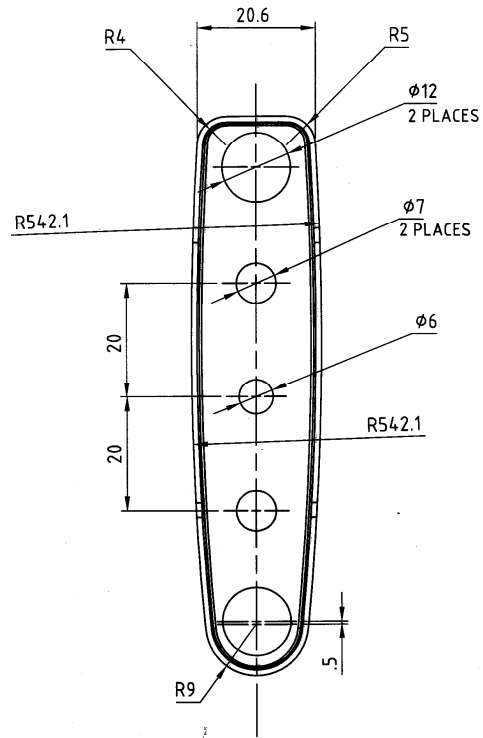
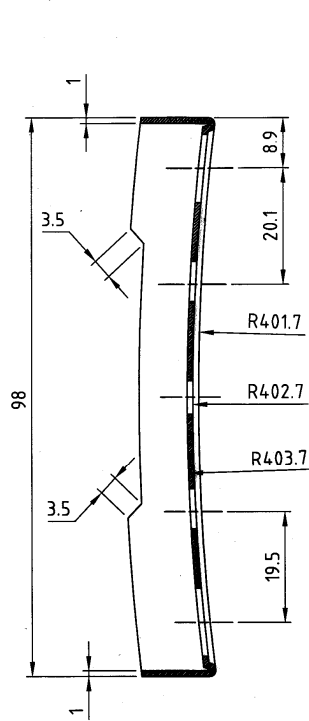


PROTECTIVE FINISH:-
 PHOSPHATE TO SPECN. JSS 0465-01:1988, CLASS II.(ACCELERATED), OIL FINISH.

K-4103

1		LOWER ARM		1		AS ABOVE	
PART NO.	DESCRIPTIONS	NO OFF	MATERIAL	TREATMENT	REMARKS	SCALE	
DGM/PROJECT	SIGNATURE & DATE.	SUB: LOWER ARM		OF: SIDE FOLDABLE BUTT		STORE DRG.NO.	
TRACED		OF: TRICHY ASSAULT RIFLE				K-4103	
DRAWN		DES.REF.NO.				OPERATION NO.	
CHECKED		DRG. No.: TAR-K-4103				---	
HOS/D&DO		ORDNANCE FACTORY TIRUCHIRAPPALLI-16.				SHEETS: 1	
OFFICER/PRODN.						SHEET No.: 1	
OFFICER/D&DO							
AMENDMENTS	SIG. & DATE	APPROVED ON. 18.07.2016					

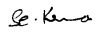
DRG. NO. K-4104



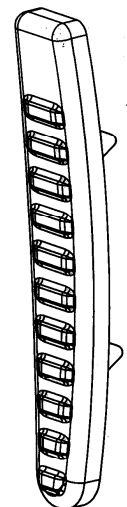
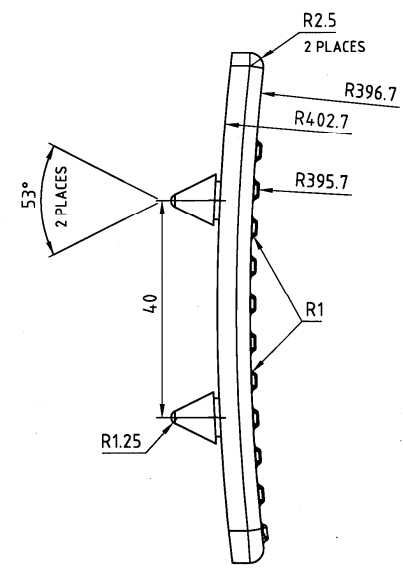
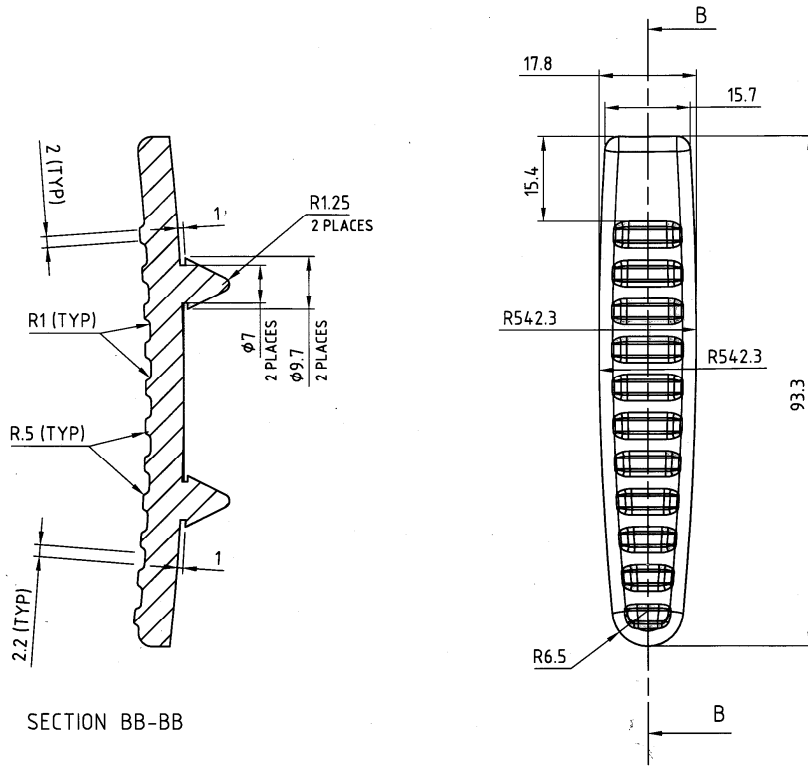
MATERIAL: BS:1449 Pt 1 1983 GR CS40 SEC 4
 (OR) BS:1449 Pt 1 1983 GR CS50 SEC 4
 (OR) BS:1449 Pt 1 1983 GR CS60 SEC 4
 (OR) BS:1449 Pt 1 1983 GR CS70 SEC 4
 (OR) BS:1449 Pt 1 1983 GR CS80 SEC 4

HT/HARDNESS : HARDENING AND TEMPERING TO 300 - 350 HV
 PROTECTIVE FINISH:- PHOSPHATE TO SPECN. JSS 0465-01:1994,
 CLASS II.(ACCELERATED), OIL FINISH.

K-4104

1		BUTT PLATE		1		AS ABOVE	
PART NO.	DESCRIPTIONS	NO OFF	MATERIAL	TREATMENT	REMARKS		
	SIGNATURE & DATE.	SUB: BUTT PLATE		SCALE			
TRACED		FOR: SIDE FOLDABLE BUTT SUB ASSY		STORE DRG.NO.			
DRAWN		OF: TRICHY ASSAULT RIFLE		K-4104			
CHECKED		DES.REF.NO.		OPERATION NO.			
HOS/D&DO		DRG. No.: TAR-K-4104		---			
OFFICER/PRODN.		ORDNANCE FACTORY		SHEETS: 1			
OFFICER/D&DO		TIRUCHIRAPPALLI-16.		SHEET No.: 1			
AMENDMENTS	SIG. & DATE	APPROVED ON. 18.07.2016					

DRG. NO. K-4105




SECTION BB-BB

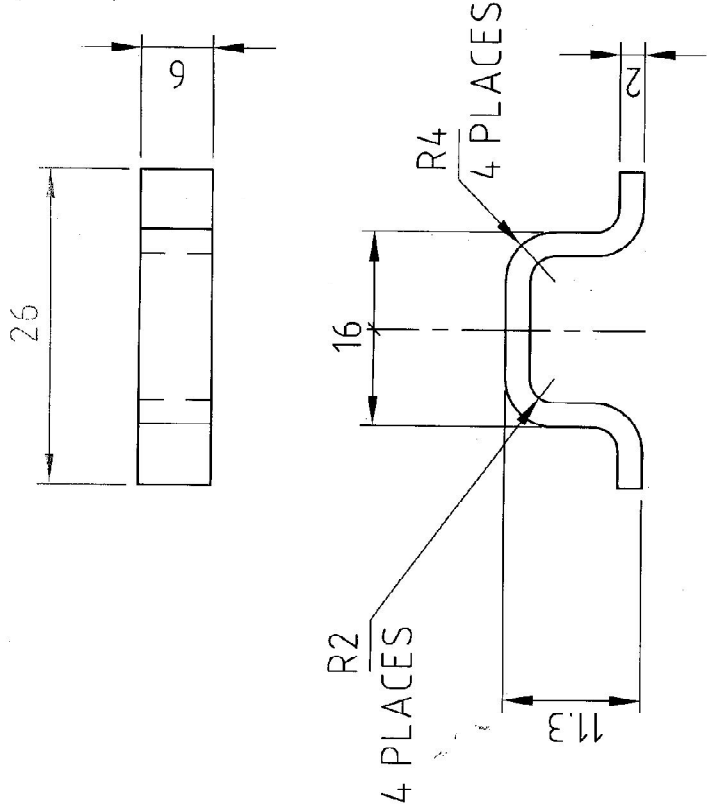
MATERIAL:- VULCANISED CHLOROPRENE RUBBER COMPOUND (NEOPRENE)
 SPECN.NO:- IND/ME/884/PROV. BASED ON BS-2752, GRADE. C4.
 HARNNESS, TENSILE STRENGTH ETC AS PER ABOVE SPECN.
 COLOUR : MATT FINISH BLACK

NOTE:-
 RUBBER PLATE MAY BE FITTED TO BUTT PLATE BY FORCE FIT & ADHESIVE DENDRITE.

K-4105

1		RUBBER PLATE		1		AS ABOVE	
PART NO.	DESCRIPTIONS	NO OFF	MATERIAL	TREATMENT	REMARKS	SCALE	
	SIGNATURE & DATE.				SUB: RUBBER PLATE	---	
	TRACED				FOR: SIDE FOLDABLE BUTT SUB ASSY	STORE DRG.NO.	
	DRAWN				OF: TRICHY ASSAULT RIFLE	K-4105	
	CHECKED				DES.REF.NO.	OPERATION NO.	
	HOS/D&DO				DRG. No.: TAR-K-4105	---	
	OFFICER/PRODN.				 ORDNANCE FACTORY TIRUCHIRAPPALLI-16.	SHEETS: 1	
	OFFICER/D&DO					SHEET No.: 1	
AMENDMENTS	SIG. & DATE	APPROVED ON. 18.07.2016					

DRG. NO. K-4107



MATERIAL: BS:1449 Pt 1 1983 GR CS40 SEC 4
 (OR) BS:1449 Pt 1 1983 GR CS50 SEC 4
 (OR) BS:1449 Pt 1 1983 GR CS60 SEC 4
 (OR) BS:1449 Pt 1 1983 GR CS70 SEC 4
 (OR) BS:1449 Pt 1 1983 GR CS80 SEC 4

HT/HARDNESS : HARDENING AND TEMPERING TO 300 - 350 HV

PROTECTIVE FINISH:- PHOSPHATE TO SPECN. JSS 0465-01:1988,
 CLASS II.(ACCELERATED), OIL FINISH.

E		1		AS ABOVE	
PART NO.	DESCRIPTIONS	NO OFF	MATERIAL	TREATMENT	REMARKS
1	HOOK	1			
SIGNATURE & DATE.		SUB: HOOK			
TRACED		FOR: SIDE FOLDABLE BUTT			
DRAWN		OF: TRICHY ASSAULT RIFLE			
CHECKED		DES.REF.NO.			
HOS/D&DO		DRG. No.:			
OFFICER/PRDN.		TAR-K-4107			
OFFICER/D&DO		ORDNANCE FACTORY TIRUCHIRAPPALLI-16.			
APPROVED ON: 27.08.2016		SCALE			
AMENDMENTS		STORE DRG.NO. K-4107			
SIG. & DATE		OPERATION NO. ----			
		SHEETS: 1			
		SHEET No.: 1			

DRG. NO. K-4110

BASE END PIECE
K-4101

BASE END PIECE TO BE WELDED WITH
UPPER AND LOWER ARM AS SHOWN

BUTT PLATE TO BE WELDED WITH
UPPER AND LOWER ARM AS SHOWN

HOOK
K-4106

TO BE WELDED WITH
BUTT PLATE (K-4104) SUITABLY

258±0.2

UPPER ARM
K-4102

BUTT PLATE
K-4104

RUBBER PLATE
K-4105

LOWER ARM
K-4103

DIMENSIONS ARE IN mm.
UNTOLERATED DIMNS. AS PER IS : 2102 (MED)
MARK DRAWING No.

See Known
DGM/Pf JJ

AMENDMENTS	SIG. & DATE

PART NO.	DESCRIPTIONS	NO OFF	MATERIAL	TREATMENT	REMARKS
①	SIGNATURE & DATE.				SUB: SIDE FOLDABLE BUTT ASSY FOR: GENERAL ASSY OF: TRICHY ASSAULT RIFLE
TRACED					SCALE N.T.S.
DRAWN					STORE DRG.NO.
CHECKED					OPERATION NO.
HOS/D&DO					DES. REF. NO.
OFFICER/ PRODN.					DRG. No.: K-4110
OFFICER/ D&DO					ORDNANCE FACTORY TIRUCHIRAPPALLI-16.
APPROVED ON. 22.12.16					SHEETS: 1 SHEET No.: 1

