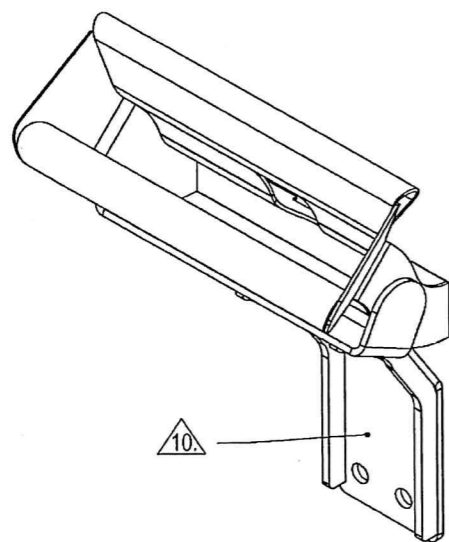


THIS DOCUMENT AND THE INFORMATION CONTAINED IN IT ARE PROPRIETARY AND CONFIDENTIAL TO OFT. NO PERSON OR ENTITY IS ALLOWED TO COPY, REPRINT, REPRODUCE OR PUBLISH ANY PART OF THIS DOCUMENT, NOR DISCLOSE ITS CONTENTS TO OTHERS, NOR MAKE ANY USE OF IT, NOR ALLOW OR ASSIST OTHERS TO MAKE ANY USE OF IT UNLESS BY THE PRIOR WRITTEN EXPRESS AUTHORIZATION OF OFT AND THEN ONLY TO THE EXTENT AUTHORIZED. COPYRIGHT-OFT.

NOTES :

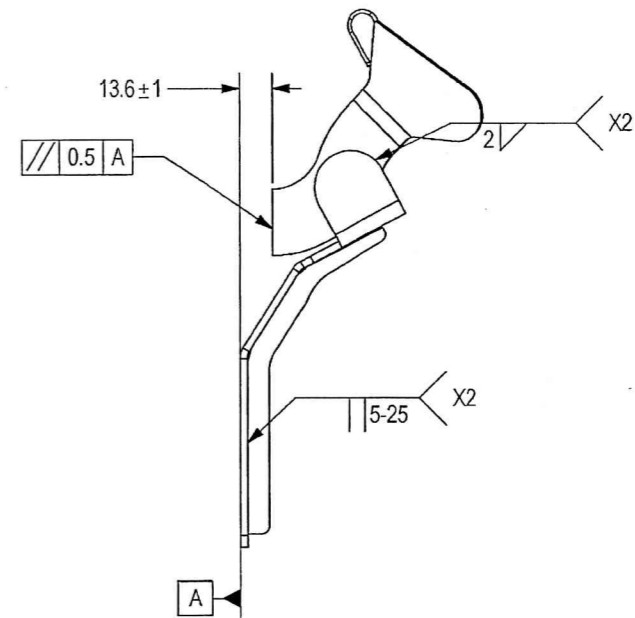
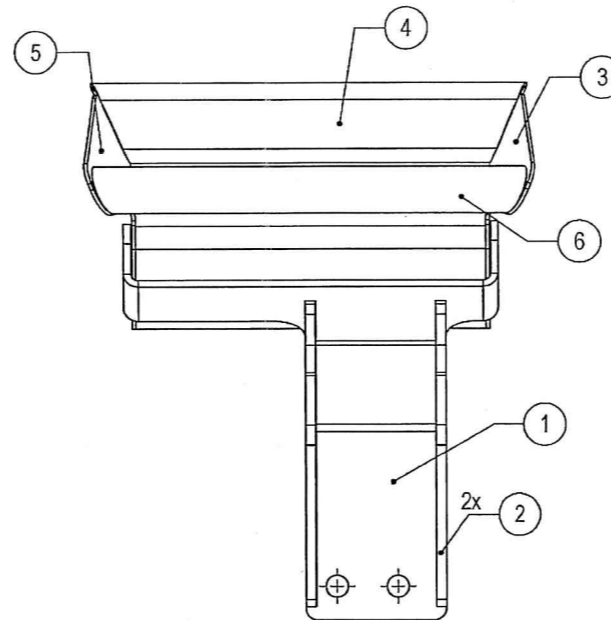
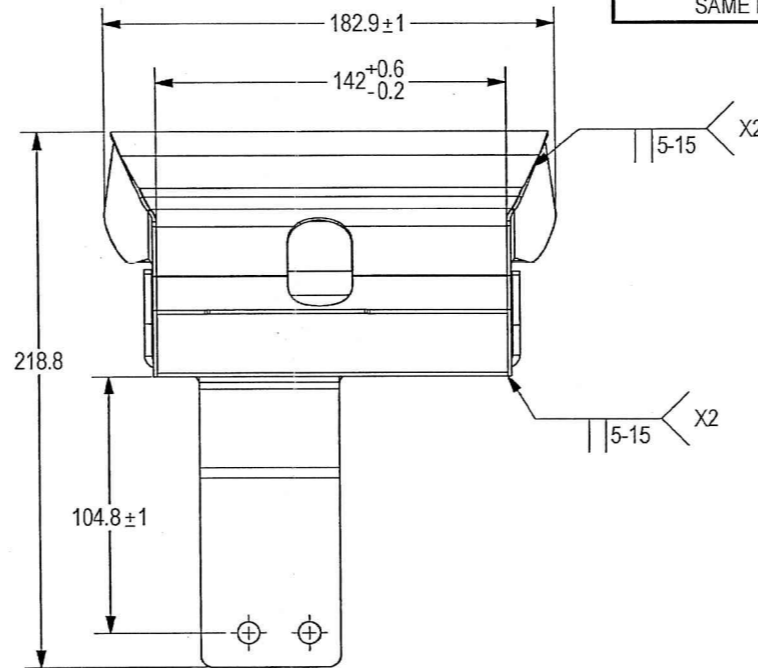
1. INTERPRET THIS DRAWING IAW ASME Y14.100M.
2. MATERIAL : SEE FN 1 TO FN 6 (GRES SHEET 316L FOR REFERENCE).
3. DEBURR AND REMOVE SHARP EDGES, APPROX. 0.3X45 Deg.
4. GENERAL TOLERANCES FOR WELDING ACC. TO ISO 13920-A
5. PARENTHEICAL FIGURES ARE FOR REFERENCE ONLY.
6. WELDING PER AWS D1.1 GTAW USING ELECTRODE ER308L PER AWS A5.9.
7. MANDATORY NDT INSPECTION OF WELDING.
7.1 VISUAL INSPECTION.
8. FINISH:
8.1 A DRY FILM LUBRICATION IN A FLUOROPOLYMER ORGANIC RESIN SOLVENT COLOR BLACK CLASS 2 TYPE 1 30-40 MICRON THICK PER VS-1-3-1-165 (OR EQUIVALENT).
9. QUALITY ASSURANCE PROVISIONS:
9.1 QUALITY ASSURANCE PROVISIONS FOR THIS ITEM PER RDMQD00012P.
10. IDENTIFY PER MIL-STD-130 PARA 4.1.B, BY LABELLING ITS CONTAINER WITH THE PART NUMBER. CHARACTERS 1.25 MM HIGH.
11. PACKAGING AND PACKING:
THE FINISHED PART SHALL BE PRESERVED AND PACKAGED IN ACCORDANCE WITH MANUFACTURER'S BEST COMMERCIAL PRACTICE.



(WEIGHT APPROX. : 0.95 Kg)

SHEET REV STATUS
ALL SHEETS ARE THE SAME REVISION

REVISION RECORD				
REV	ECO	DESCRIPTION	DATE	APVD
01		Freeze	26-Sep-17	S. Daniel
02		Freeze	19-Oct-17	O. Berman
03		Freeze	10-Dec-17	S. Daniel
-	T00063	Identical To Previous Released	08-Apr-18	L. Goldshtein



UN CONTROLLED COPY
CERTIFIED CORRECT COPY
OF APPROVED DRAWINGS
AT THIS DATE 01.01.2022
Design & Drawing Office
Ordnance Factory,
Tiruchirappalli-620014

SEE ATTACHED MEDIA
SEE SEPARATE PARTS LIST

UNLESS OTHERWISE SPECIFIED		SIGNATURE	DATE	ORDNANCE FACTORY TIRUCHIRAPPALLI	
DIMENSIONS ARE IN MM PER ASME Y14.5-2009		DRAWN	17/12/23	FOR: STAND WEAPON ASSY	
TOLERANCES		CHECKED		TITLE	
LINEAR	ANGULAR	HOS/DDO	R. Z. S. K.	INLET ASSY	
SEE NOTE 4	SEE NOTE 4	OFFICER/PRODN		SIZE	CAGE CODE
1st ANGLE PROJECTION		OFFICER/QC		C	2291A
SURFACE TEXTURE IN MicroMeter		OFFICER/DDO		DWG NO	080780A-00
PROJECT OFFICER		PROJECT		SCALE	12
		PROJECT		AUTOMATED DRAWING (SW)	YES
		PROJECT		SHEET	1 OF 1
		PROJECT		STATUS	Freeze

DWG NO 080780A-00

1/1

OFT

ASSEMBLY PARTS LIST

Assembly Parts List For: 080780A-00

Rev: -

Status: Released

Description: INLET ASSY

FN	CMD	PART NUM	ECO	DESCRIPTION	MB	QTY	U/M	REF. DES./REMARKS	MFG. PN / CUSTOMER	LA	LI
1	MP	Y17233A-00		BASE INLET	M	1	Each				
2	MP	Y17264A-00		GUSSET BASE	M	2	Each				
3	MP	Y17257A-00		SHEET 1, INLET	M	1	Each				
4	MP	Y18682A-00		SHEET 2, INLET	M	1	Each				
5	MP	Y17255A-00		SHEET 3, INLET	M	1	Each				
6	MP	Y17231A-00		INLET, SHEET 4	M	1	Each				

UN CONTROLLED COPY

CERTIFIED CORRECT COPY
OF APPROVED DRAWINGS
AT THIS DATE 01.01.2021

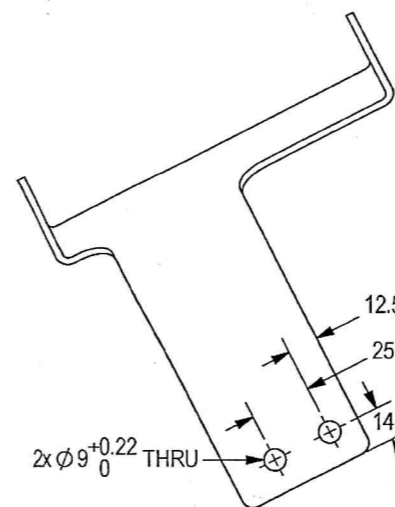
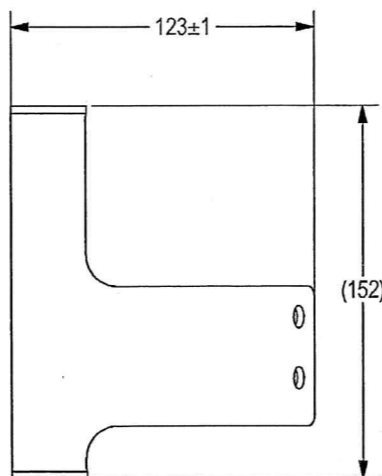
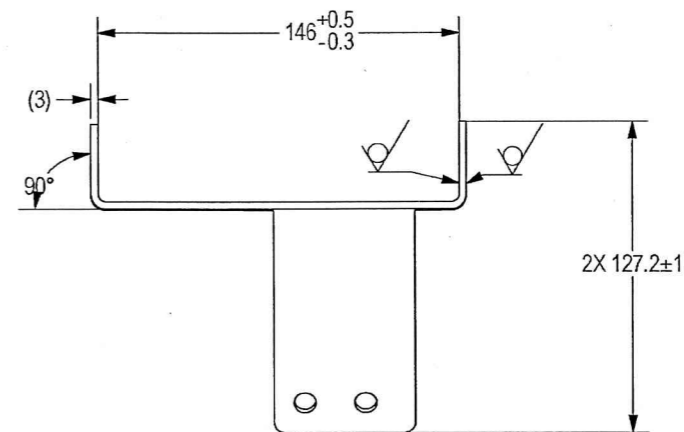
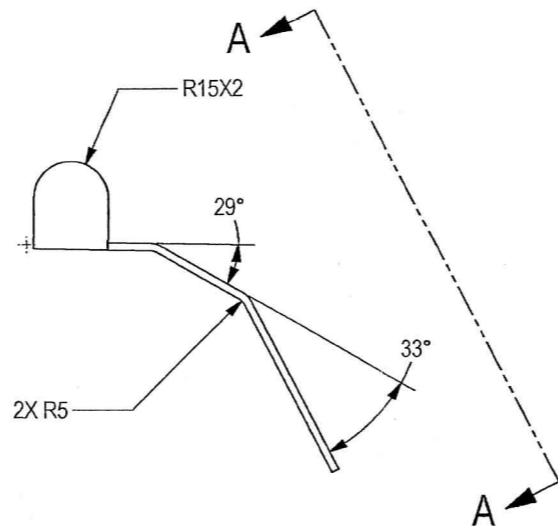
Design & Drawing Office
Ordnance Factory,
Tiruchirappalli-620014

THIS DOCUMENT AND THE INFORMATION CONTAINED IN IT ARE PROPRIETARY AND CONFIDENTIAL TO OFT. NO PERSON OR ENTITY IS ALLOWED TO COPY, REPRINT, REPRODUCE OR PUBLISH ANY PART OF THIS DOCUMENT, NOR DISCLOSE ITS CONTENTS TO OTHERS, NOR MAKE ANY USE OF IT, NOR ALLOW OR ASSIST OTHERS TO MAKE ANY USE OF IT UNLESS BY THE PRIOR WRITTEN EXPRESS AUTHORIZATION OF OFT AND THEN ONLY TO THE EXTENT AUTHORIZED.
COPYRIGHT-OFT.

SHEET REV STATUS
ALL SHEETS ARE THE SAME REVISION

REVISION RECORD				
REV	ECO	DESCRIPTION	DATE	APVD
01		4 Scrap Freeze	16-Oct-17	S. Daniel
02		Freeze	10-Dec-17	S. Daniel
-	T00083	Identical To Previous Released	08-Apr-18	L. Goldshtein

- NOTES:
- INTERPRET THIS DRAWING IAW ASME Y14.100M.
 - MATERIAL:
3MM CRES SHEET 316L PER ASTM-A-240.
 - DEBURR AND REMOVE SHARP EDGES, APPROX. 0.3X45°.
 - GENERAL TOLERANCES ACCORDING TO ISO 2768-m.
 - QUALITY ASSURANCE PROVISIONS FOR THIS ITEM PER RDMQD00012P.
 - PARENTHETICAL FIGURES ARE FOR REFERENCE ONLY.
 - PACKAGING AND PACKING:
THE FINISHED PART SHALL BE PRESERVED AND PACKAGED IN ACCORDANCE WITH MANUFACTURER'S COMMERCIAL PRACTICE.
 - IDENTIFY PER MIL-STD-130 PARA 4.1.B, BY LABELING ITS CONTAINER WITH THE PART NUMBER. CHARACTERS 1.25 MM HIGH.

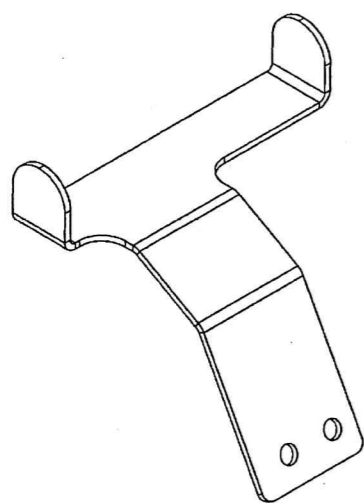


UN CONTROLLED COPY

CERTIFIED CORRECT COPY
OF APPROVED DRAWINGS
AT THIS DATE 01.01.2021

Design & Drawing Office
Ordnance Factory,
Tiruchirappalli-620016.

VIEW A-A



(WEIGHT APPROX. : 0.32 Kg)

UNLESS OTHERWISE SPECIFIED		SIGNATURE	DATE	SEE ATTACHED MEDIA	
DIMENSIONS ARE IN MM PER ASME Y14.5M - 1994		DRAWN	17/2/20	ORDNANCE FACTORY TIRUCHIRAPPALLI	
TOLERANCES		CHECKED		TITLE: BASE INLET FOR: INLET ASSY	
LINEAR	ANGULAR	HOS/DDO	P. Z. 18/0	OF: 12.7MM SRCG	
SEE NOTE 4	SEE NOTE 4	OFFICER/PRODN		SIZE	CAGE CODE
1st ANGLE PROJECTION		OFFICER/QC		C	2291A
		OFFICER/DDO		DWG NO	Y17233A-00
PROJECT OFFICER	SURFACE TEXTURE IN Micro METER			SCALE	12
				AUTOMATED DRAWING (SW)	SHEET 1 OF 1

DWG NO Y17233A-00

SH 1

CUSTOMER SENSITIVE

REVISION HISTORY

REV	CHG NO	DESCRIPTION	DATE	APPROVED
01		Freeze - 4 Scrap	16-Oct-17	S. Daniel
02		Freeze	10-Dec-17	S. Daniel
--	T00063	Released - Identical To Previous	08-Apr-18	Y. Shapira

UN CONTROLLED COPY


CERTIFIED CORRECT COPY
OF APPROVED DRAWINGS
AT THIS DATE 21-01-2020

[Signature]
Design & Drawing Office
Ordnance Factory,
Tiruchirappalli-620016

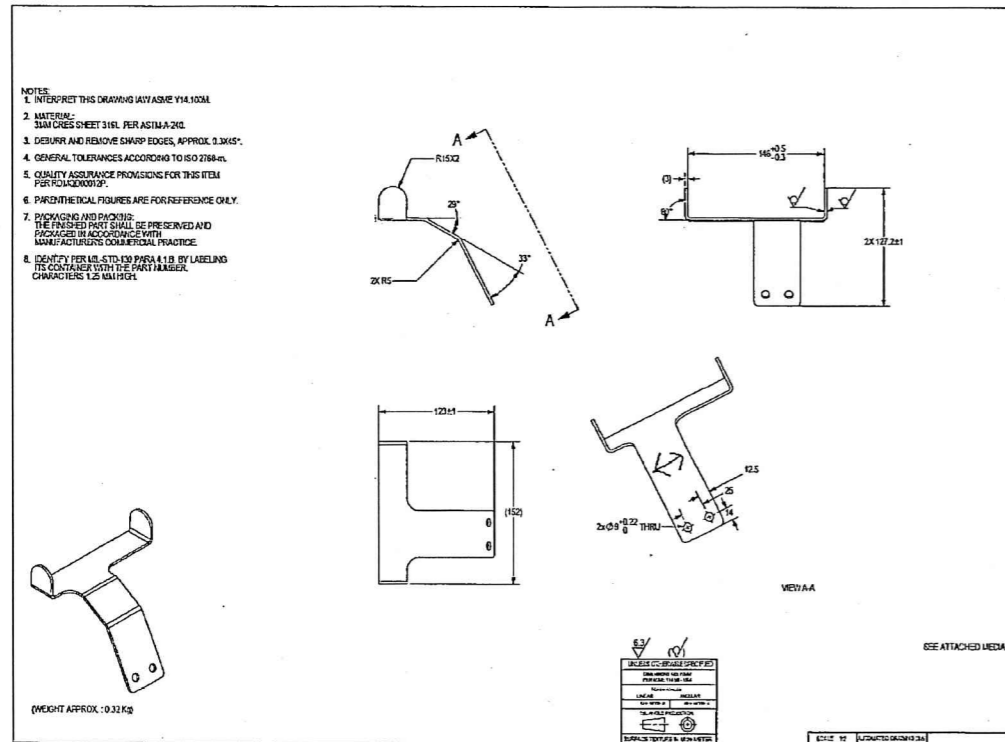
[Signature]

ALL SHEETS ARE THE SAME REVISION

PROJECT OFFICER

	SIGNATURE	DATE	 ORDNANCE FACTORY TIRUCHIRAPPALLI	
DRAWN	<i>[Signature]</i>	21/12/20		
CHECKED			TITLE	FOR: INLET ASSY
HOS/DDO	<i>[Signature]</i>	21/12/20	BASE INLET	OF: 12.7MM SRCG
OFFICER/PRODN			SIZE	CAGE CODE
OFFICER/QC			A	2291A
OFFICER/DDO	<i>[Signature]</i>	21/12/2020	SCALE NONE	DWG NO. Y17233A-00
				SHEET 1 OF 3

FROM



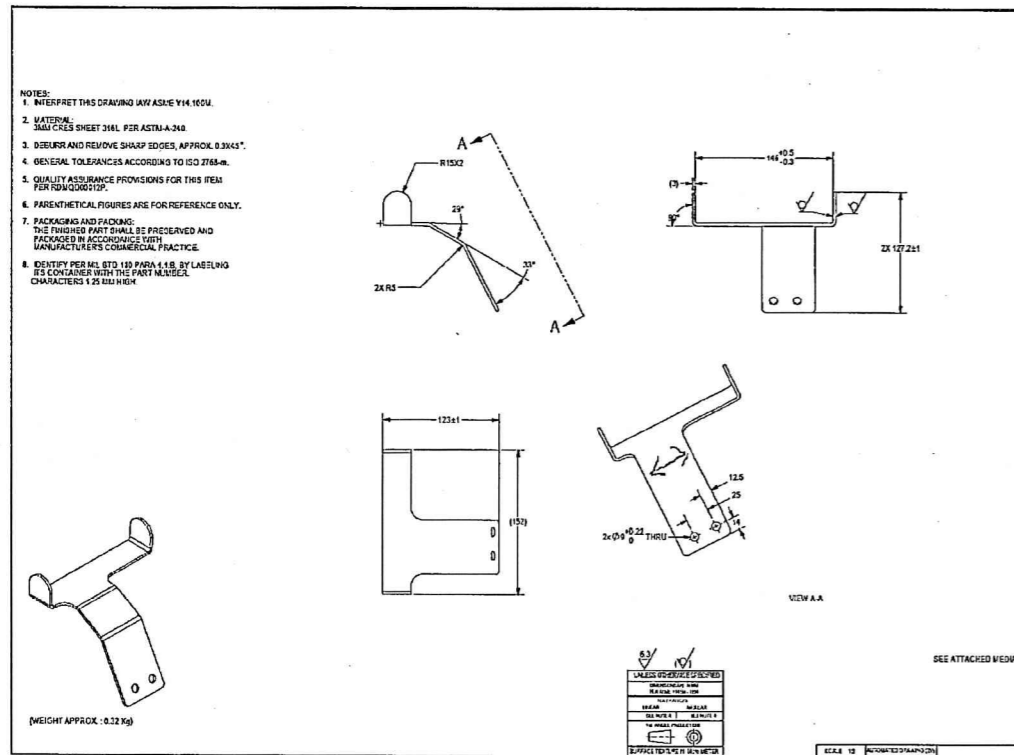
UN CONTROLLED COPY
CERTIFIED CORRECT COPY
OF APPROVED DRAWINGS
AT THIS DATE 01-01-2021

[Signature]
Design & Drawing Office
Ordnance Factory,
Tuchirappalli-620016

TO

PART WIDTH CHANGE, MANUFACTURE ACORDING TO CAD MODEL.

CHANGE WAS MADE TO ALLOW BETER CLERANCE FOR SCREW TIGHTNING.



UN CONTROLLED COPY

CERTIFIED CORRECT COPY
OF APPROVED DRAWINGS
AT THIS DATE 01.01.2021

Design & Drawing Office
Ordnance Factory,
Firuchirappalli-620016

2

DWG NO Y17264A-00

SH 1

1

SHEET REV RECORD

ALL SHEETS ARE THE SAME REVISION

REVISION RECORD

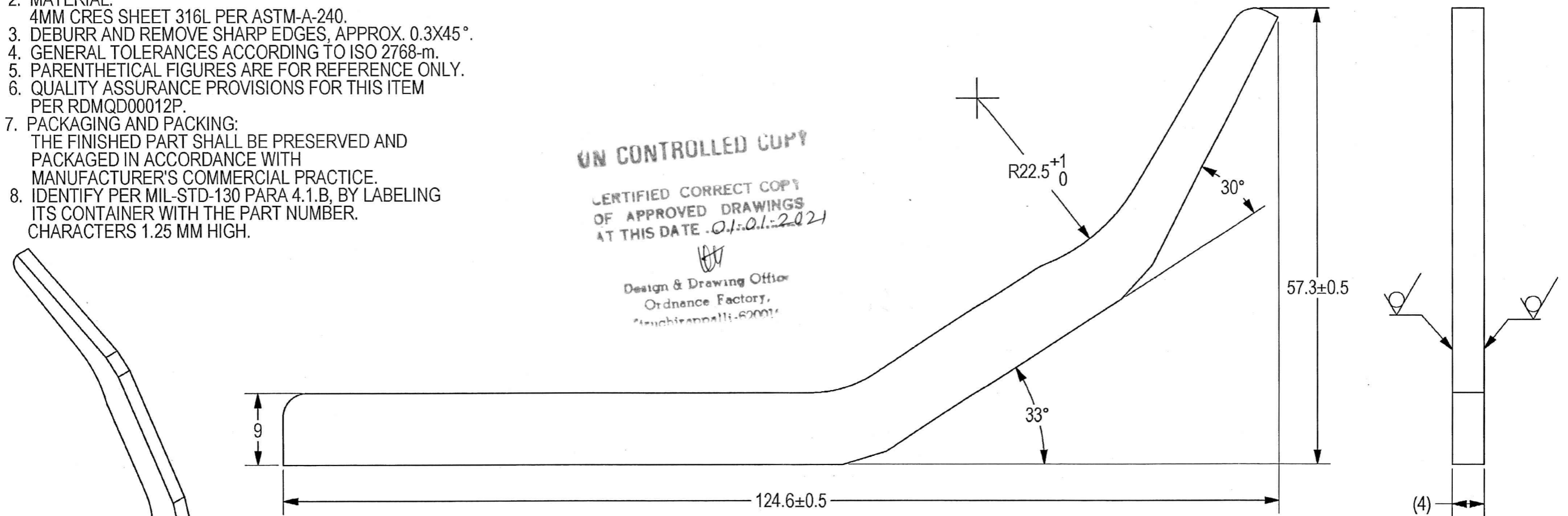
REV	ECO	DESCRIPTION	DATE	APVD
01		Freeze	16-Oct-17	S. Daniel
--	T00063	Identical To Previous Released	08-Apr-18	L. Goldshtein

THIS DOCUMENT AND THE INFORMATION CONTAINED IN IT ARE PROPRIETARY AND CONFIDENTIAL TO OFT. NO PERSON OR ENTITY IS ALLOWED TO COPY, REPRINT, REPRODUCE OR PUBLISH ANY PART OF THIS DOCUMENT, NOR DISCLOSE ITS CONTENTS TO OTHERS, NOR MAKE ANY USE OF IT, NOR ALLOW OR ASSIST OTHERS TO MAKE ANY USE OF IT UNLESS BY THE PRIOR WRITTEN EXPRESS AUTHORIZATION OF OFT AND THEN ONLY TO THE EXTENT AUTHORIZED.
COPYRIGHT-OFT.

NOTES:

1. INTERPRET THIS DRAWING IAW ASME Y14.100M.
2. MATERIAL:
4MM CRES SHEET 316L PER ASTM-A-240.
3. DEBURR AND REMOVE SHARP EDGES, APPROX. 0.3X45°.
4. GENERAL TOLERANCES ACCORDING TO ISO 2768-m.
5. PARENTHEICAL FIGURES ARE FOR REFERENCE ONLY.
6. QUALITY ASSURANCE PROVISIONS FOR THIS ITEM PER RDMQD00012P.
7. PACKAGING AND PACKING:
THE FINISHED PART SHALL BE PRESERVED AND PACKAGED IN ACCORDANCE WITH MANUFACTURER'S COMMERCIAL PRACTICE.
8. IDENTIFY PER MIL-STD-130 PARA 4.1.B, BY LABELING ITS CONTAINER WITH THE PART NUMBER. CHARACTERS 1.25 MM HIGH.

UN CONTROLLED COPY
 CERTIFIED CORRECT COPY
 OF APPROVED DRAWINGS
 AT THIS DATE .01.01.2021
 Design & Drawing Officer
 Ordnance Factory,
 Tiruchirappalli-620014



(WEIGHT APPROX. : 0.038 Kg)

SEE ATTACHED MEDIA

UNLESS OTHERWISE SPECIFIED		SIGNATURE	DATE	ORDNANCE FACTORY TIRUCHIRAPPALLI	
DIMENSIONS ARE IN MM PER ASME Y14.5M -1994		DRAWN	17/12/19		
TOLERANCES		CHECKED		TITLE	
LINEAR	ANGULAR	HOS/DDO	18/10/2	GUSSET BASE	
SEE NOTE 4		OFFICER/PRODN		FOR: INLET ASSY	OF:12.7MM SRCG
1st ANGLE PROJECTION		OFFICER/QC		SIZE	CAGE CODE
		OFFICER/DDO		B	2291A
PROJECT OFFICER		SURFACE TEXTURE IN Micro IMETER		DWG NO	Y17264A-00
				SCALE	2:1
				AUTOMATED DRAWING (SW)	SHEET 1 OF 1
				PLM Control	02
				EPDM MODEL REV	02
				EPDM MODEL STATUS	Freeze
				EPDM MODEL NAME	Y17264A-00

2

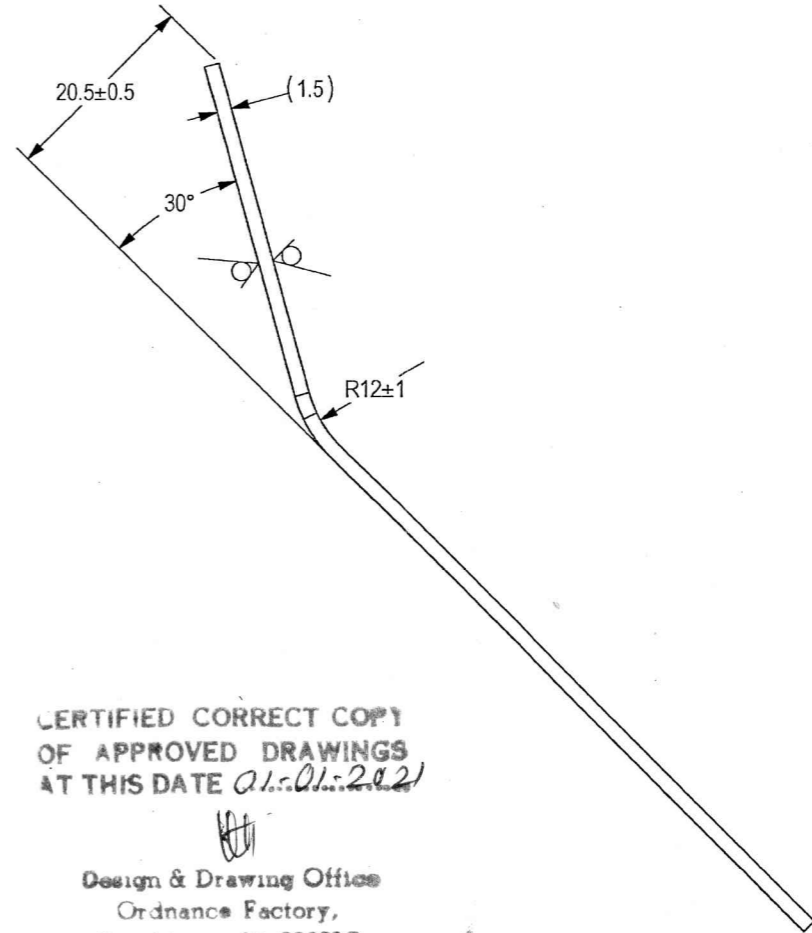
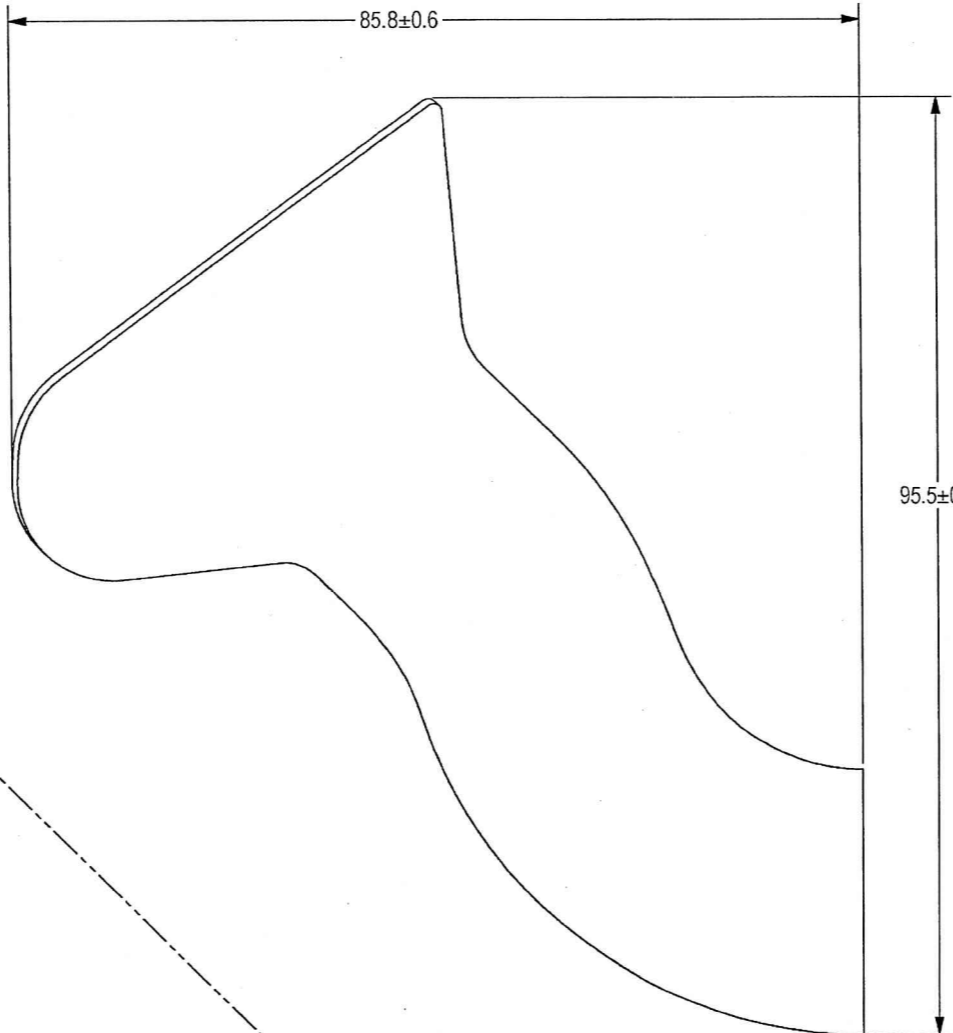
THIS DOCUMENT AND THE INFORMATION CONTAINED IN IT ARE PROPRIETARY AND CONFIDENTIAL TO OFT. NO PERSON OR ENTITY IS ALLOWED TO COPY, REPRINT, REPRODUCE OR PUBLISH ANY PART OF THIS DOCUMENT, NOR DISCLOSE ITS CONTENTS TO OTHERS, NOR MAKE ANY USE OF IT, NOR ALLOW OR ASSIST OTHERS TO MAKE ANY USE OF IT UNLESS BY THE PRIOR WRITTEN EXPRESS AUTHORIZATION OF OFT AND THEN ONLY TO THE EXTENT AUTHORIZED.
COPYRIGHT-OFT.

NOTES:

1. INTERPRET THIS DRAWING IAW ASME Y14.100M.
2. MATERIAL:
1.5MM CRES SHEET 316L PER ASTM-A-240.
3. DEBURR AND REMOVE SHARP EDGES, APPROX. 0.3X45°.
4. GENERAL TOLERANCES ACCORDING TO ISO 2768-m.
5. PARENTHEICAL FIGURES ARE FOR REFERENCE ONLY.
6. QUALITY ASSURANCE PROVISIONS FOR THIS ITEM PER RDMQD00012P.
7. PACKAGING AND PACKING:
THE FINISHED PART SHALL BE PRESERVED AND PACKAGED IN ACCORDANCE WITH MANUFACTURER'S COMMERCIAL PRACTICE.
8. IDENTIFY PER MIL-STD-130 PARA 4.1.B, BY LABELING ITS CONTAINER WITH THE PART NUMBER. CHARACTERS 1.25 MM HIGH.

SHEET REV STATUS
ALL SHEETS ARE THE SAME REVISION

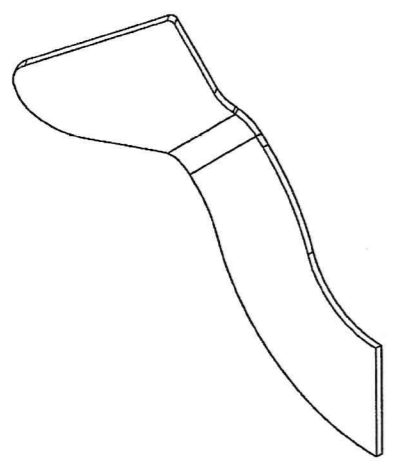
REVISION RECORD					
REV	ECO	DESCRIPTION	DATE	APVD	
01		Freeze	16-Oct-17	S. Daniel	
--	T00063	Identical To Previous Released	08-Apr-18	L. Goldshtein	



CERTIFIED CORRECT COPY
OF APPROVED DRAWINGS
AT THIS DATE 01.01.2021

Design & Drawing Office
Ordnance Factory,
Tiruchirappalli-620016

VIEW A-A



(WEIGHT APPROX. : 0.04 Kg)

6.3 / (10) ✓

SEE ATTACHED MEDIA

UNLESS OTHERWISE SPECIFIED	SIGNATURE	DATE	ORDNANCE FACTORY TIRUCHIRAPPALLI		
DIMENSIONS ARE IN MM PER ASME Y14.5M - 1994	DRAWN	17/10/21	FOR: INLET ASSY		
TOLERANCES	CHECKED		TITLE		
LINEAR	HOS/DDO	18/02	SHEET 1, INLET		
ANGULAR	OFFICER/PRODN		FOR: 12.7MM SRCG		
SEE NOTE 4.	OFFICER/QC		SIZE	CAGE CODE	DWG NO
1st ANGLE PROJECTION	OFFICER/DDO		C	2291A	Y17257A-00
PROJECT OFFICER	OFFICER/DDO		SCALE	2:1	AUTOMATED DRAWING (SW)
SURFACE TEXTURE IN Micro METER					SHEET 1 OF 1

DWG NO
Y17257A-00
SH
1

THIS DOCUMENT AND THE INFORMATION CONTAINED IN IT ARE PROPRIETARY AND CONFIDENTIAL TO OFT. NO PERSON OR ENTITY IS ALLOWED TO COPY, REPRINT, REPRODUCE OR PUBLISH ANY PART OF THIS DOCUMENT, NOR DISCLOSE ITS CONTENTS TO OTHERS, NOR MAKE ANY USE OF IT, NOR ALLOW OR ASSIST OTHERS TO MAKE ANY USE OF IT UNLESS BY THE PRIOR WRITTEN EXPRESS AUTHORIZATION OF OFT AND THEN ONLY TO THE EXTENT AUTHORIZED.
COPYRIGHT-OFT.

NOTES:

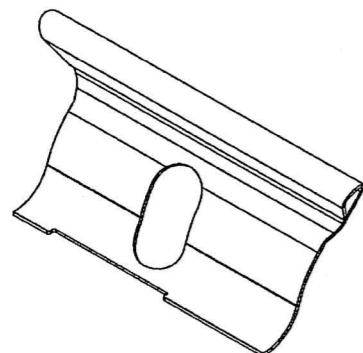
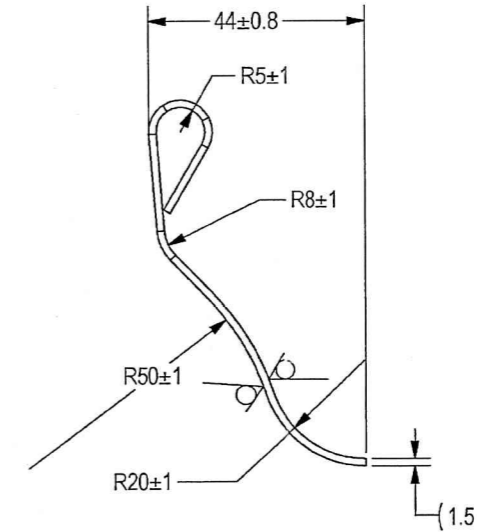
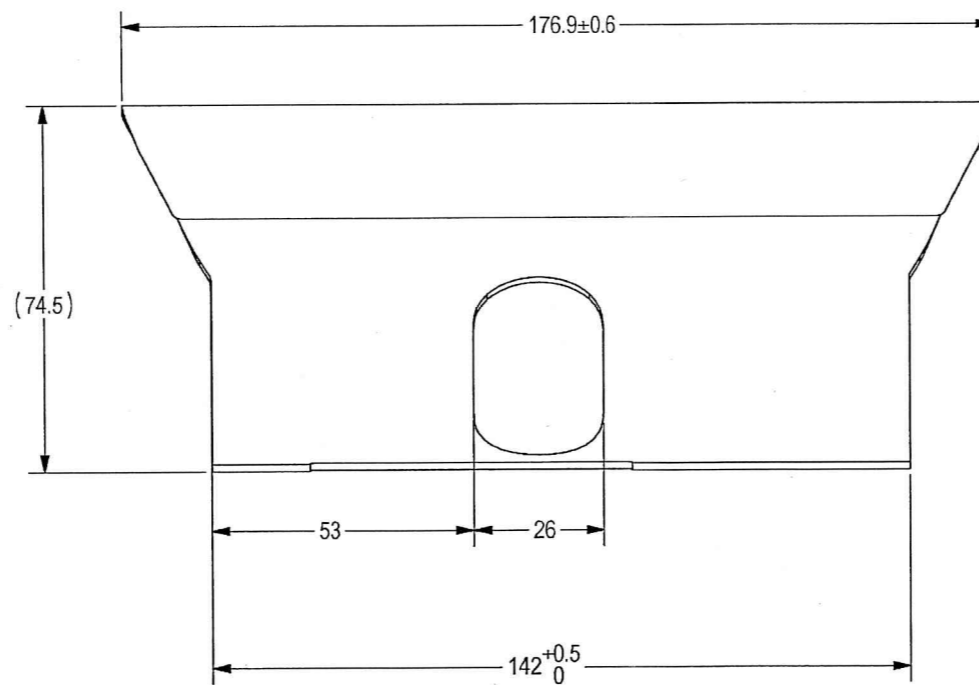
- INTERPRET THIS DRAWING IAW ASME Y14.100M.
- MATERIAL:
1.5MM CRES SHEET 316L PER ASTM-A-240.
- DEBURR AND REMOVE SHARP EDGES, APPROX. 0.3X45°.
- GENERAL TOLERANCES ACCORDING TO ISO 2768-m.
- PARENTHEICAL FIGURES ARE FOR REFERENCE ONLY.
- QUALITY ASSURANCE PROVISIONS FOR THIS ITEM PER RDMQD00012P.
- PACKAGING AND PACKING:
THE FINISHED PART SHALL BE PRESERVED AND PACKAGED IN ACCORDANCE WITH MANUFACTURER'S COMMERCIAL PRACTICE.
- IDENTIFY PER MIL-STD-130 PARA 4.1.B, BY LABELING ITS CONTAINER WITH THE PART NUMBER. CHARACTERS 1.25 MM HIGH.

SHEET REV STATUS

ALL SHEETS ARE THE SAME REVISION

REVISION RECORD

REV	ECO	DESCRIPTION	DATE	APVD
01		Freeze	26-Sep-17	S. Daniel
-	T00063	Identical To Previous Released	08-Apr-18	L. Goldshtein



(WEIGHT APPROX. : 0.11 Kg)

UN CONTROLLED COPY

CERTIFIED CORRECT COPY OF APPROVED DRAWINGS AT THIS DATE 01.01.2021

Design & Drawing Office
Ordnance Factory,
Tiruchirappalli-620016

SEE ATTACHED MEDIA

UNLESS OTHERWISE SPECIFIED		SIGNATURE	DATE	ORDNANCE FACTORY TIRUCHIRAPPALLI	
DIMENSIONS ARE IN MM PER ASME Y14.5M - 1994		<i>[Signature]</i>	17/07/20	FOR: INLET ASSY	
TOLERANCES		CHECKED		TITLE	
LINEAR	ANGULAR	HOS/DDO		SHEET 2, INLET	
SEE NOTE 4	SEE NOTE 4			OF: 32.7MM SRCG	
1st. ANGLE PROJECTION		OFFICER/PRODN		SIZE	CAGE CODE
		OFFICER/QC		C	2291A
PROJECT OFFICER		OFFICER/DDO		DWG NO	Y18682A-00
SURFACE TEXTURE IN Micro METER				SCALE	1:1
				AUTOMATED DRAWING (SW)	
				SHEET 1 OF 1	

DWG NO Y18682A-00

SH 1

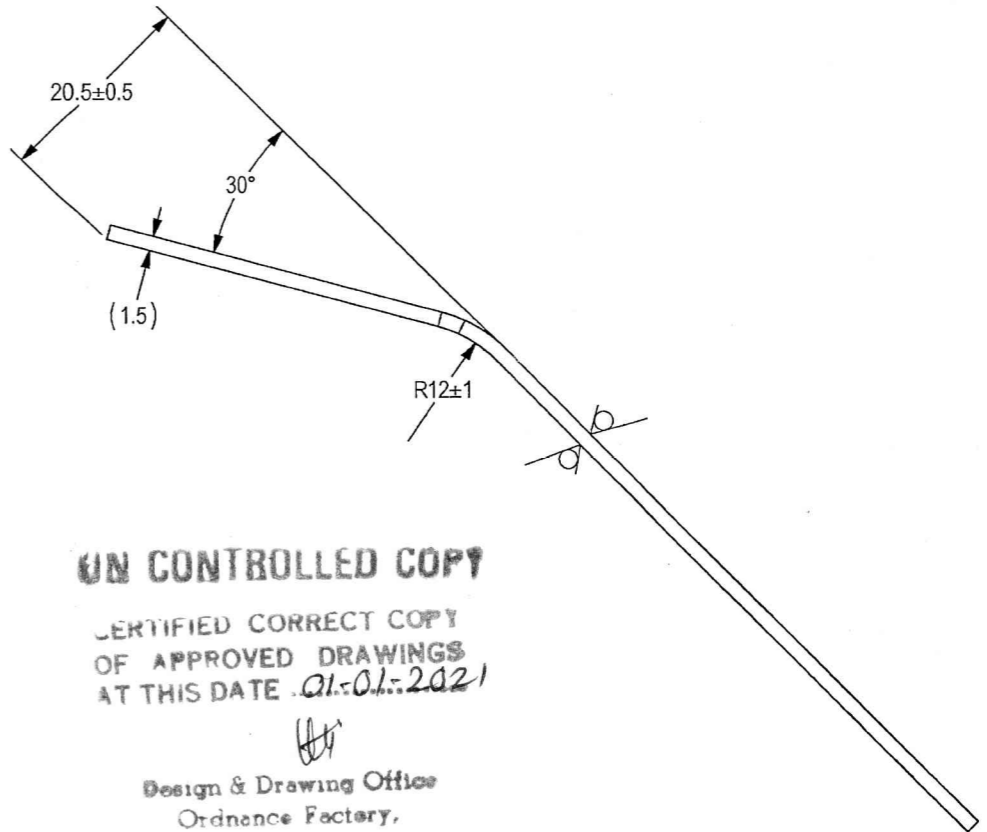
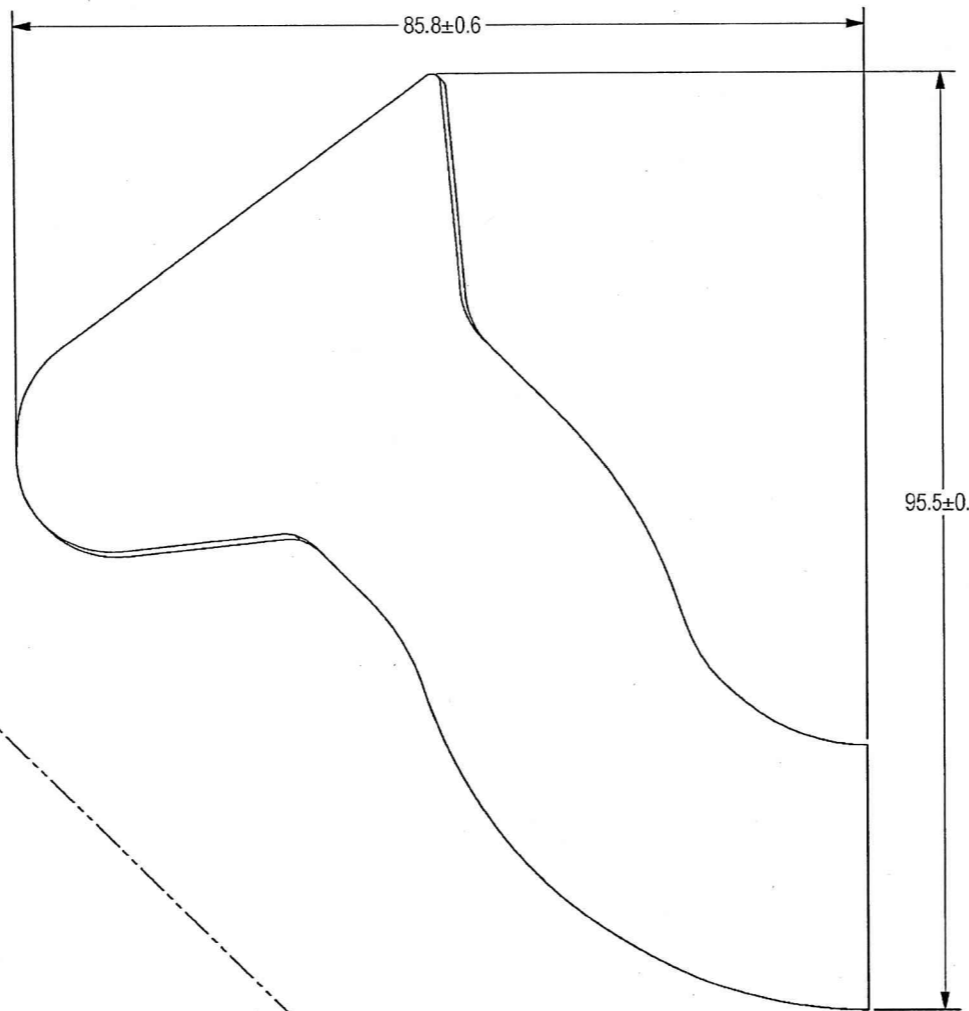
THIS DOCUMENT AND THE INFORMATION CONTAINED IN IT ARE PROPRIETARY AND CONFIDENTIAL TO OFT. NO PERSON OR ENTITY IS ALLOWED TO COPY, REPRINT, REPRODUCE OR PUBLISH ANY PART OF THIS DOCUMENT, NOR DISCLOSE ITS CONTENTS TO OTHERS, NOR MAKE ANY USE OF IT, NOR ALLOW OR ASSIST OTHERS TO MAKE ANY USE OF IT UNLESS BY THE PRIOR WRITTEN EXPRESS AUTHORIZATION OF OFT AND THEN ONLY TO THE EXTENT AUTHORIZED.
COPYRIGHT-OFT.

NOTES:

1. INTERPRET THIS DRAWING IAW ASME Y14.100M.
2. MATERIAL:
1.5MM CRES SHEET 316L PER ASTM-A-240.
3. DEBURR AND REMOVE SHARP EDGES, APPROX. 0.3X45°.
4. GENERAL TOLERANCES ACCORDING TO ISO 2768-m.
5. PARENTHEICAL FIGURES ARE FOR REFERENCE ONLY.
6. QUALITY ASSURANCE PROVISIONS FOR THIS ITEM PER RDMQD00012P.
7. PACKAGING AND PACKING:
THE FINISHED PART SHALL BE PRESERVED AND PACKAGED IN ACCORDANCE WITH MANUFACTURER'S COMMERCIAL PRACTICE.
8. IDENTIFY PER MIL-STD-130 PARA 4.1.B, BY LABELING ITS CONTAINER WITH THE PART NUMBER. CHARACTERS 1.25 MM HIGH.

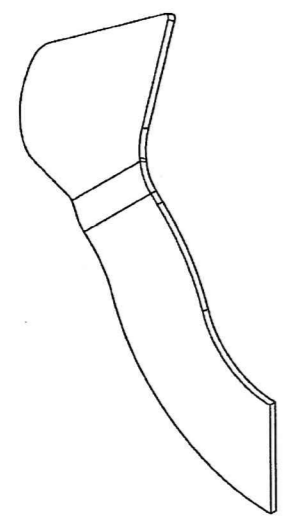
SHEET REV STATUS
ALL SHEETS ARE THE SAME REVISION

REVISION RECORD				
REV	ECO	DESCRIPTION	DATE	APVD
01		Freeze	16-Oct-17	S. Daniel
--	T00063	Identical To Previous Released	08-Apr-18	L. Goldstein



UN CONTROLLED COPY
CERTIFIED CORRECT COPY
OF APPROVED DRAWINGS
AT THIS DATE 01-01-2021
[Signature]
Design & Drawing Office
Ordnance Factory,
Tiruchirappalli-620016.

VIEW A-A



(WEIGHT APPROX : 0.04 Kg)

UNLESS OTHERWISE SPECIFIED		SIGNATURE	DATE	SEE ATTACHED MEDIA	
DIMENSIONS ARE IN MM PER ASME Y14.5M - 1994		<i>[Signature]</i>	11/21/17	ORDNANCE FACTORY TIRUCHIRAPPALLI	
TOLERANCES		CHECKED		FOR: INLET ASSY	
LINEAR	ANGULAR	HOS/DDO	<i>[Signature]</i>	TITLE SHEET 3, INLET	
SEE NOTE 4.		OFFICER/PRODN		OF:12.7MM SRCG	
1st ANGLE PROJECTION		OFFICER/QC		SIZE C	CAGE CODE 2291A
SURFACE TEXTURE IN Micro METER		OFFICER/DDO		DWG NO	Y17255A-00
PROJECT OFFICER <i>[Signature]</i>				SCALE	2:1
				AUTOMATED DRAWING (SW)	SHEET 1 OF 1

DWG NO Y17255A-00
SH 1

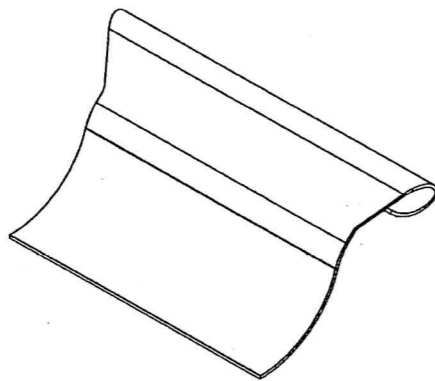
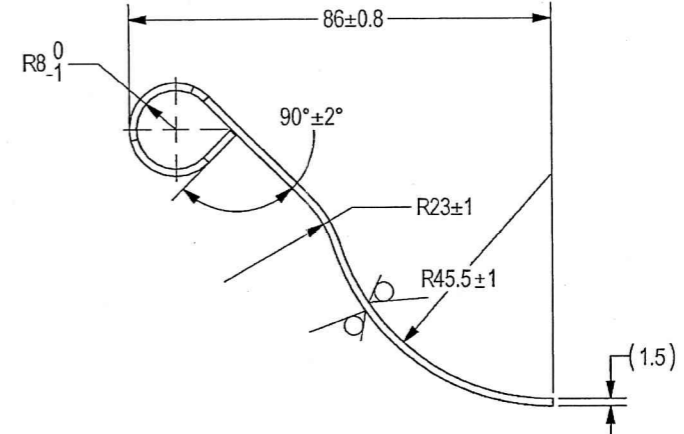
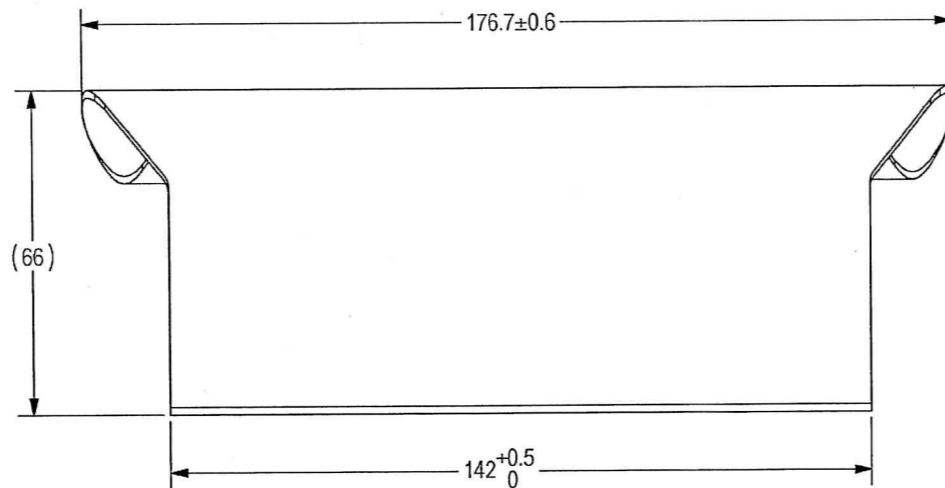
THIS DOCUMENT AND THE INFORMATION CONTAINED IN IT ARE PROPRIETARY AND CONFIDENTIAL TO OFT. NO PERSON OR ENTITY IS ALLOWED TO COPY, REPRINT, REPRODUCE OR PUBLISH ANY PART OF THIS DOCUMENT, NOR DISCLOSE ITS CONTENTS TO OTHERS, NOR MAKE ANY USE OF IT, NOR ALLOW OR ASSIST OTHERS TO MAKE ANY USE OF IT UNLESS BY THE PRIOR WRITTEN EXPRESS AUTHORIZATION OF OFT AND THEN ONLY TO THE EXTENT AUTHORIZED.
COPYRIGHT-OFT.

NOTES:

1. INTERPRET THIS DRAWING IAW ASME Y14.100M.
2. MATERIAL:
1.5MM CRES SHEET 316L PER ASTM-A-240.
3. DEBURR AND REMOVE SHARP EDGES, APPROX. 0.3X45°.
4. GENERAL TOLERANCES ACCORDING TO ISO 2768-m.
5. PARENTHEICAL FIGURES ARE FOR REFERENCE ONLY.
6. QUALITY ASSURANCE PROVISIONS FOR THIS ITEM PER RDMQD00012P.
7. PACKAGING AND PACKING:
THE FINISHED PART SHALL BE PRESERVED AND PACKAGED IN ACCORDANCE WITH MANUFACTURER'S COMMERCIAL PRACTICE.
8. IDENTIFY PER MIL-STD-130 PARA 4.1.B, BY LABELING ITS CONTAINER WITH THE PART NUMBER. CHARACTERS 1.25 MM HIGH.

SHEET REV STATUS
ALL SHEETS ARE THE SAME REVISION

REVISION RECORD				
REV	ECO	DESCRIPTION	DATE	APVD
01		Freeze	16-Oct-17	S. Daniel
--		Released	11-Apr-18	L. Goldstein



(WEIGHT APPROX. : 0.27 Kg)

UN CONTROLLED COPY

CERTIFIED CORRECT COPY OF APPROVED DRAWINGS AT THIS DATE 01.01.2021

Design & Drawing Office
Ordnance Factory,
Tiruchirappalli-620018

SEE ATTACHED MEDIA

UNLESS OTHERWISE SPECIFIED		SIGNATURE	DATE	ORDNANCE FACTORY TIRUCHIRAPPALLI	
DIMENSIONS ARE IN MM PER ASME Y14.5M - 1994		DRAWN	17/12/17	FOR: INLET ASSY	
TOLERANCES		CHECKED		TITLE SHEET 4, INLET	
LINEAR	ANGULAR	HOS/DDO	17/12/17	OF: 12.7MM SRCG	
SEE NOTE 4.		OFFICER/PRODN		SIZE	CAGE CODE
1st ANGLE PROJECTION		OFFICER/OC		C	2291A
		OFFICER/DDO		DWG NO	Y17231A-00
PROJECT OFFICER	SURFACE TEXTURE IN Micro METER			SCALE	1:1
				AUTOMATED DRAWING (SW)	SHEET 1 OF 1

DWG NO
Y17231A-00

SH
1