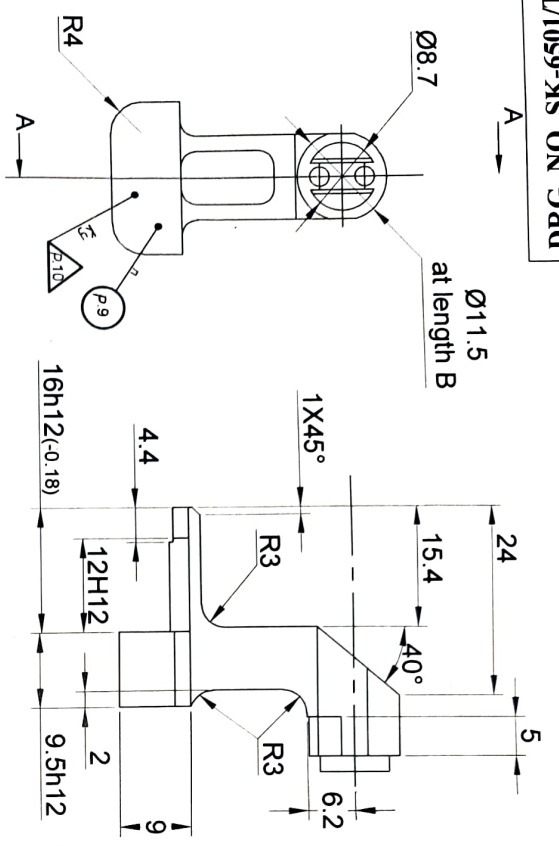


DRG. NO. SK-NO. 1059/TE

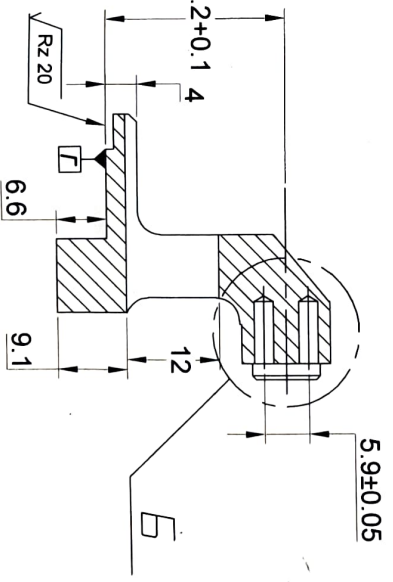
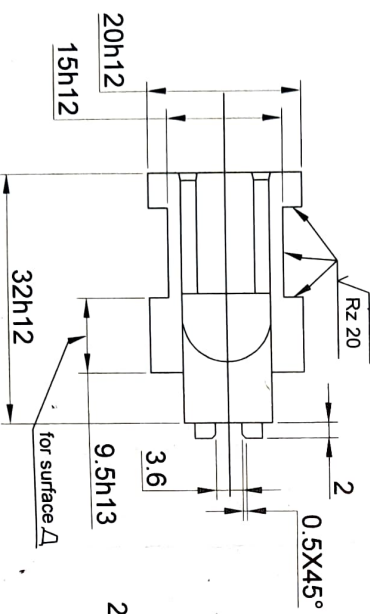
√ Ra 6.3 (✓)

D.A. NO.

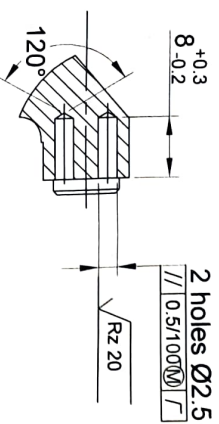


1. PATTERN DRAFT ANGLES ARE WITHIN DIMENSIONAL TOLERANCE.
2. UNSPECIFIED CAST ROUNDING RADI OF OUTER AND INNER ANGLES ARE UP TO 0.5 mm.
3. CAST RADI TOLERANCE ARE ±0.5 mm.
4. CAST ANGULAR DIMENSIONS TOLERANCE ARE ±1°.
5. UNSPECIFIED TOLERANCE ACCORDING TO 6T45-1-CSTY/E2.
6. PROTRUDING OF SURFACE RELATIVE TO SURFACE DEPRESSION IS ALLOWED UP TO 0.1 mm.
7. POSITION SIZE AND QUANTITY OF CAST DEFECTS TRACE FROM MOLD SPLIT, TRACE FROM EJECTORS ARE ACCORDING TO CONTROL SAMPLE.
8. ROUGHNESS TO BE ENSURED BY TOOL.
9. MARK MOLD NUMBER AND MOLD CAVITY NUMBER FRONT 2-FP 3 GOST 26.008-85.
10. STAMP.

*Handwritten note:*  
 H=0.1mm D  
 S.I.T. ...  
 PAF EXECUTION DATE  
 Date: .....



SECTION A-A



MATERIAL: - CASTING 116T 45 - 1C8TY/E2

50TK30 GOST 977-88

7.62X39mm AR-SAF

GUIDE

DRAWN	SEEN BY	CHECKED
DATE	17-04-2023	
APPROVED		

SMALL ARMS FACTORY  
KANPUR

DRG. NO. SK-6501/TE  
SHT. 1 OF 1