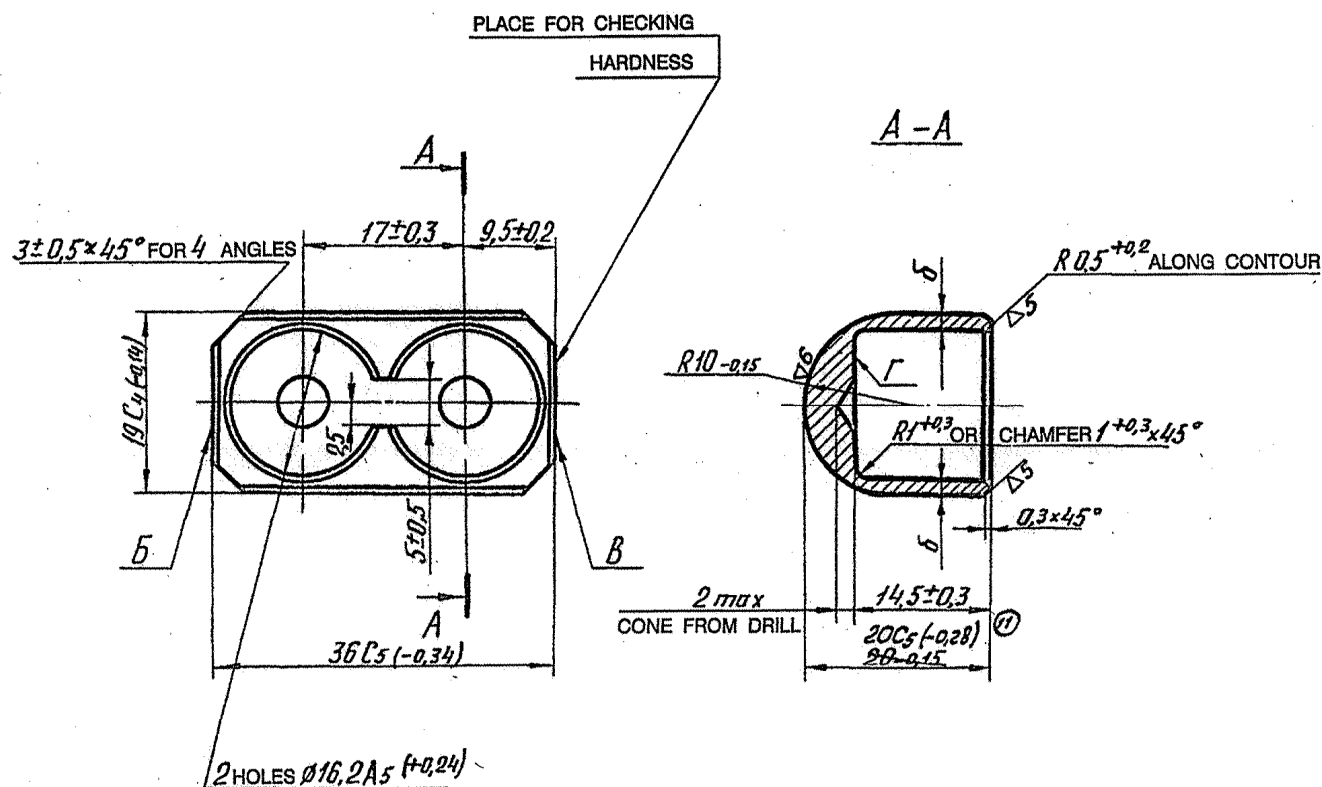


DRAWING NUMBER  
172.45.174-1

SHEET No. 1 OF 1

▽4 (▽)



1. TO BE SUBJECTED TO INDUCTION HARDENING TO OBTAIN HRC 48 ... 36.
2. DIFFERENCE IN MEASUREMENTS OF DIMENSIONS "5" IS NOT MORE THAN 0.4 mm.
3. SHIFT OF SPHERE RELATIVE TO PLANES ALONG DIMENSION 19 C4 IS NOT MORE THAN 0.2 mm.
- 14 4. CENTRE HOLES A<sub>2</sub>-ØGT-Ø725-GOST 14034-74 ON PLANES "B" AND "B" ARE ALLOWED.
5. WHEN CUTTING THE 5 mm SLOT, DEPRESSION AND PROJECTION UPTO 0.5 mm FROM PLANE "Γ" IS ALLOWED.
6. TO BE MARKED WITH ACID.
7. TO BE OXIDIZED / PHOSPHATED.
8. COMPONENT MAY BE MANUFACTURED FROM PROFILE NO 2480 IN COMPLIANCE WITH TY 14-1-1271-75.
9. WHEN THE JUNCTION BETWEEN HOLES Ø16.2A<sub>5</sub> IS NOT LESS THAN 0.5mm. IT IS ALLOWED NOT TO CUT SLOT 5±0.5.
10. SEPERATE TOOL MARKS ARE ALLOWED ON THE SURFACES OF HOLES Ø16.2A<sub>5</sub>.

**EXPLANATORY NOTE :-**

11. REFERENCE MATERIAL QUOTED :- STEEL 38XC GOST 4543-71. STRUCTURAL CHROMIUM SILICON ALLOY STEEL GOOD QUALITY GRADE 38XC GOST 4543-71.
12. a) CHEMICAL COMPOSITION : AS PER STEEL GRADE 38XC GOST 4543-71.

CONTENT OF ELEMENTS %					
C	Si	Mn	Cr	S	P
				MAX	
0.34 - 0.42	1.0 - 1.4	0.30 - 0.60	1.30 - 1.60	0.035	0.035

RESIDUAL CONTENT OF COPPER AND NICKEL SHOULD NOT EXCEED 0.30 % EACH.

- b) MECHANICAL PROPERTIES : AS PER STEEL GRADE 38XC GOST 4543-71.

TENSILE STRENGTH Kgf / mm <sup>2</sup>	YIELD POINT Kgf / mm <sup>2</sup>	ELONGATION %	REDUCTION IN AREA %	IMPACT STRENGTH Kgf / cm <sup>2</sup>
MINIMUM				
95	75	12	50	7

14B ALT. MATL. :- STEEL 817M40 (En 24) TO BS : 970 Part 1 : 1983

14A 188.45.001cb-3Cb

PILOT SAMPLE SHOULD BE APPROVED BY A H S P BEFORE BULK PRODUCTION.

EST. WT. (Kg) TO BE STAMPED OR MARKED WHERE INDICATED THUS # ( LETTERS)

ALL SHARP EDGES AND CORNERS TO BE REMOVED UNLESS OTHERWISE STATED MACHINED CORNERS TO HAVE R OUTSIDE R INSIDE EQUIVALENT CHAMFERS ARE PERMISSIBLE.

DRN	Sd / =	MATERIAL :-	USED ON :-
CHD	Sd / =	STEEL 38XC	175.45cbCb
APPD	Sd / =	GOST 4543-71	172.45.06cbCb
DATE	21-02-92	CONTROLLERATE OF QUALITY ASSURANCE (HEAVY VEHICLES) AVADI	
SCALE:-	2:1	TITLE:-	
DIMENSIONS IN mm		BEARING	
TOLERANCE ON DIMNS UNLESS OTHERWISE STATED IS : 2102-69		D S CAT NUMBER	
ALL THREADS TO CONFORM TO		DRAWING NUMBER	
14B	07.07.06	172.45.174-1	
14A	25.10.04		
14	28.11.88		
ISSUE	DATE	NATURE OF AMENDMENTS	

"COMMON TO T-90"  
DRG. RE INDIANISED BASED ON RUSSIAN ORIGINAL ISSUE - 13  
18-SAYAVELU, JTO(D)  
01-08-06

"COMMON TO T-90"  
DRG. RE INDIANISED BASED ON RUSSIAN ORIGINAL ISSUE - 13

F-86

SIZE A2