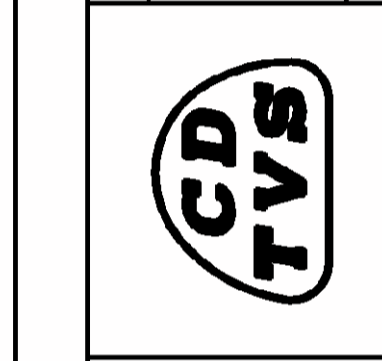


100 mm

GENERAL TOLERANCES

RANGE OF NOMINAL DIMENSIONS (± mm)	
> 50	± 0.180
≤ 50	± 0.100
> 180	± 0.300
≤ 180	± 0.200
> 400	± 0.400
≤ 400	± 0.300



CONFIDENTIAL DRAWING
IT SHOULD NOT BE COPIED OR COMMUNICATED TO ANY PERSON WITHOUT THE WRITTEN APPROVAL OF SUNDARAM CLAYTON LIMITED. © 1990

PART No. **M 800220** GA

ENGINEERING CHANGES

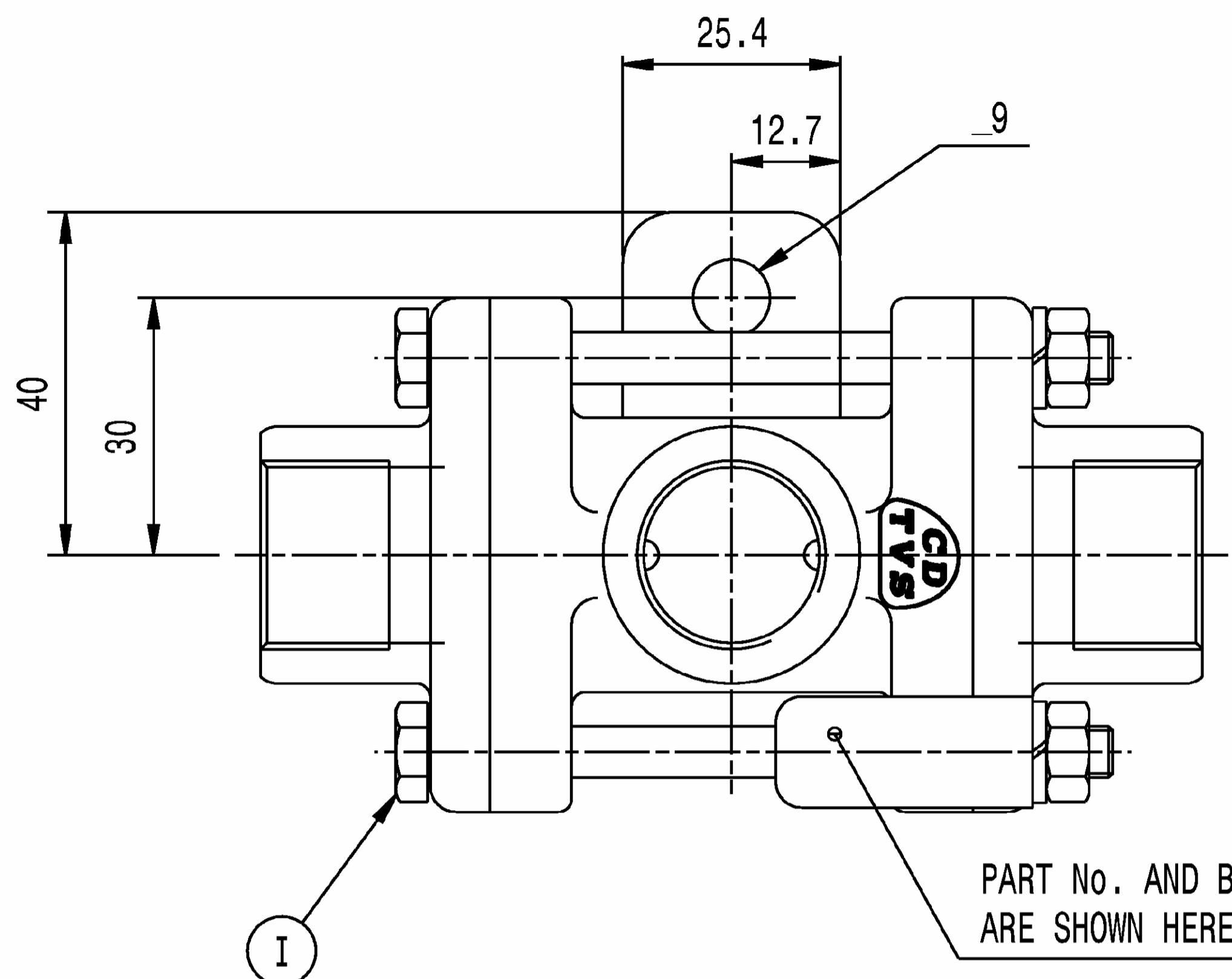
ECN No.	DATE	REV	SIGN
6080	30.1.90	New	
8375	12.4.2001	1	

Surface protection details added.
Drawing redrawn.

PART CODE	MATERIAL	SURFACE PROTECTION
XII	PLASTIC	NO TREATMENT
XI	RUBBER	NO TREATMENT
X	STAINLESS STEEL	NO TREATMENT
IX	BRASS	NO TREATMENT
VIII	ZINC ALLOY	CHROMATED
VII	ALUMINIUM ALLOY	ANODISED
VI	ALUMINIUM ALLOY	CHROMATED
V	CAST IRON	PAINTED
IV	STEEL	POWDER COATED
III	STEEL	PAINTED
II	STEEL	PHOSPHATED
I	STEEL	ZINC PLATED

DRN	RBS	12.4.2001	UNLESS OTHERWISE SPECIFIED ALL DIMENSIONS IN mm REMOVE BURRS AND SHARP EDGES FROM FINISHED PARTS	MATERIAL	-
CHD	SN	12.4.2001		ALL DIMENSIONS ARE AFTER SURFACE PROTECTION / TREATMENT	ALTERNATE MATERIAL
APD	SN	12.4.2001	MALE THREAD TO IS : 4218 - 6g FEMALE THREAD TO IS : 4218 - 6H	SURFACE PROTECTION	REFER TABLE
				RAW PART No.	-

IF IN DOUBT ASK - DO NOT SCALE



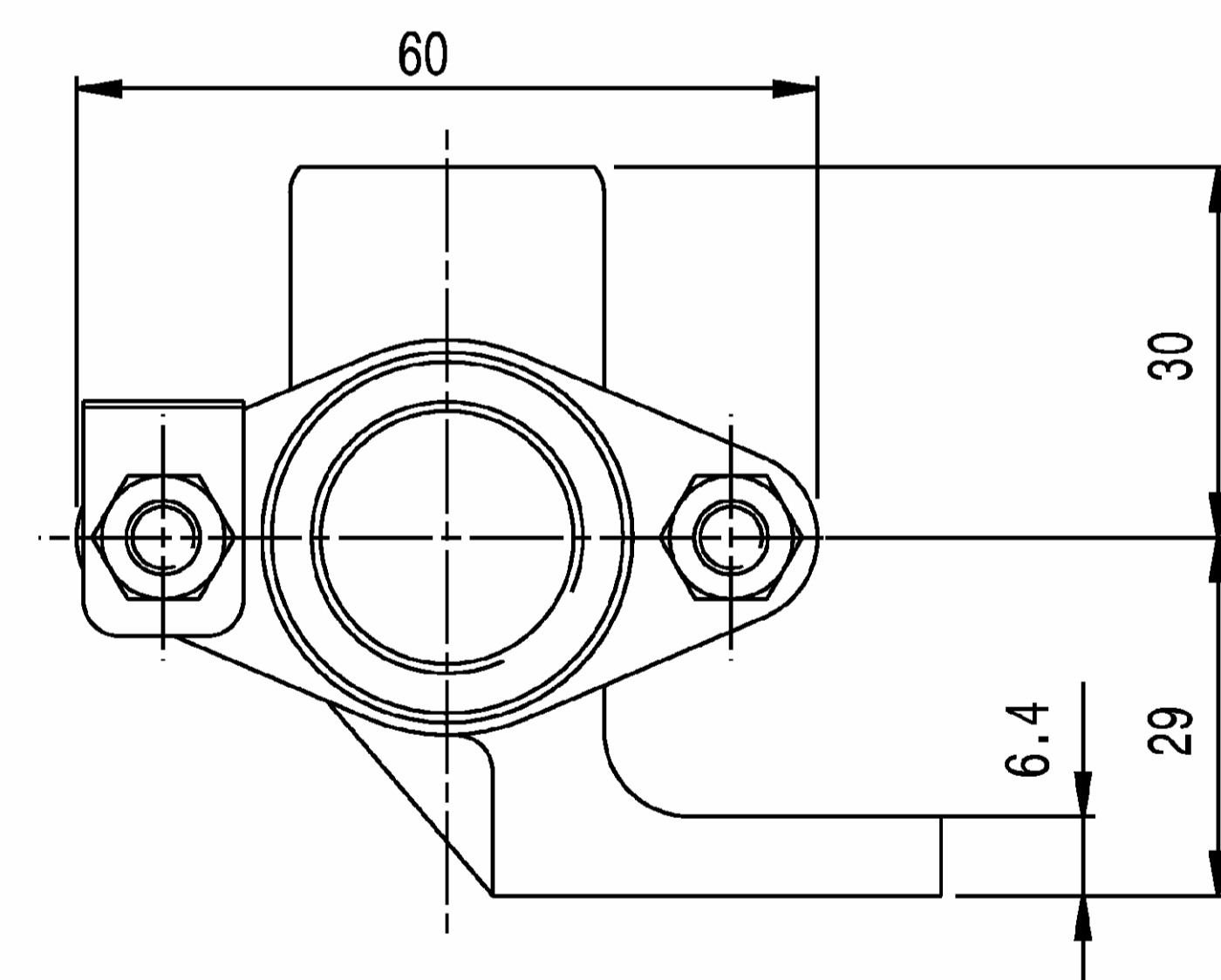
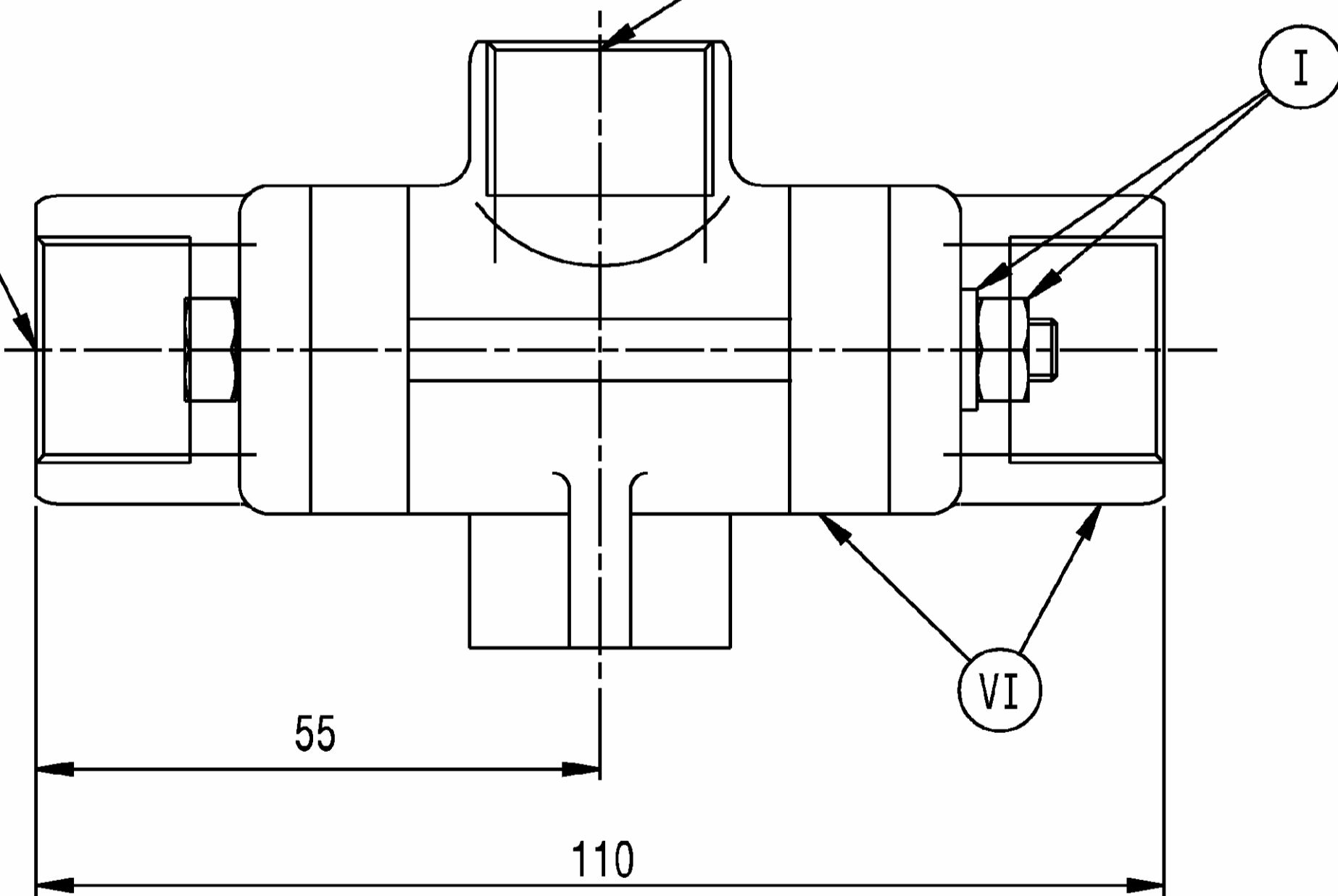
26/7/7	99JM 204 441	NR		NEW RELEASE	
Date	Mod No	S.No	Zone	Modification	D.O.

TATA MOTORS' PART NO. 2154 4310 0109

PART No. AND BATCH No. ARE SHOWN HERE

2 - INLET PORT
M22x1.5 - DEEP 15
TORQUE 60 Nm.MAX.

DELIVERY PORT
M22x1.5 - DEEP 15
TORQUE 60 Nm.MAX.



OPEN PORTS ARE FITTED WITH CLOSURE PLUGS FOR STORAGE AND TRANSIT PURPOSES

PRODUCT SPECIFICATION No. PSSC 12C
(ISSUE No. 3 DATE 9.8.00)

SUNDARAM - CLAYTON LIMITED

DOUBLE CHECK VALVE

PART No.
M 800220

GA

SCALE
1 : 1

