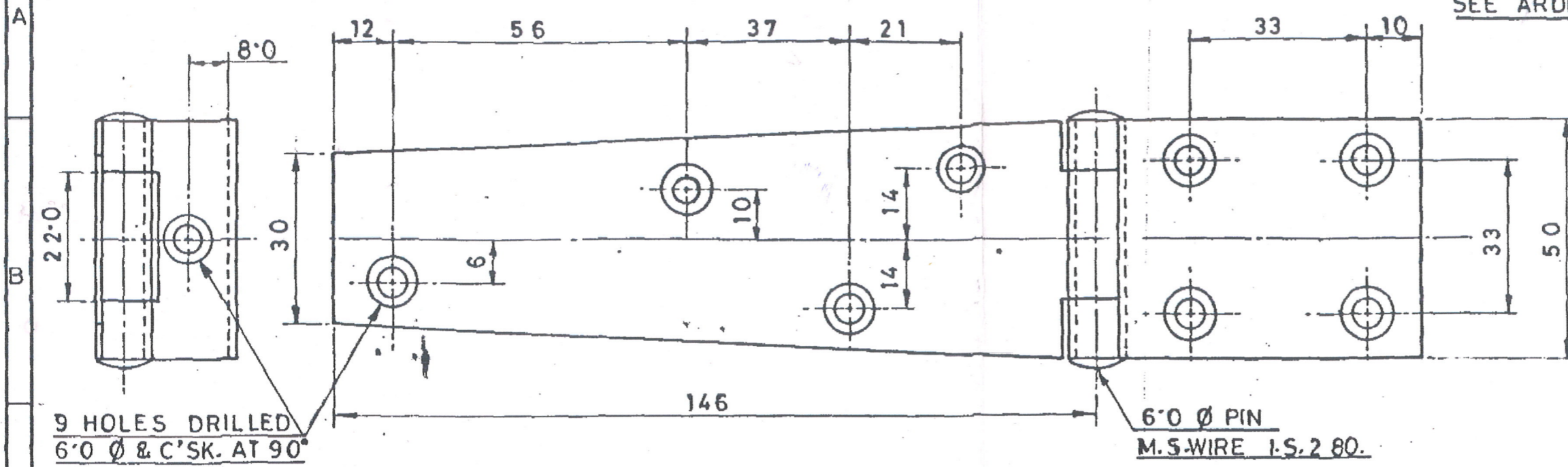


1005-006475

D.S.CAT. NO.

DIMNS. ARE IN mm.

FOR EXPLANATION OF DIMENSIONING ETC.  
SEE ARDE NOTE SHEET NO.1.



CERTIFIED COPY OF THE  
STORE DRG/GAUGE DRG/Sch/  
SPECN/NOTE SHT.  
DATE: 25.07.16. | CDO

18.7.2001 25078-SA		IN ASSY DRG COLUMN, 5140-000288 SHT.1 WAS 1005-006332 SHT.3.		DRN. CHD. TRD, Shamsda COMP. M. Barbui		AHSP. CQA(SA), ICHAPUR			
14-8-97 23889-SA		PROFORMA CHANGED, NEG. RE-TRACED AND DRG. RE-SEALED. PREVIOUS D.C. NOS. 9890-SA & 15733-SA.		SCALE:- 1:1		EST. MASS.			
DATE AUTHY.		BRIEF RECORD		DT. 14-8-97		APPROVED. DT. 31-12-64			
SEALED:-		D.C. NO. 9890-SA, DT. 20.3.68		SIGN.		NEG. RE-TRACED			
NOMENCLATURE				HINGE, CRANKED.				ASSY. 5140-000288 SHT.1	
				MATERIAL:- STEEL B.S. 1449 En.2				DGNR'S REF. ARDE 1155	
				H.T./HARDNESS				DETAIL No.1.	
				PROTECTIVE FINISH.				PART No.	
								DRG. No.	
								D.S.CAT. 1005-006475	
								No.	