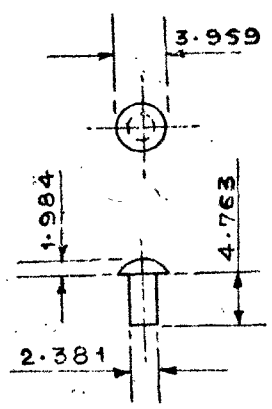


PART NO
QX 201

FOR EXPLANATION OF DIMENSIONING ETC.
THIRD ANGLE PROJECTION DIMENSION ARE IN mm

D.C.I. 11243-A, 6-U.A.

NOTE:-
TOLERANCE ON UNTOLERANCED DIMENSION
FOR ONE DECIMAL PLACE ± 0.3
FOR TWO OR MORE DECIMAL PLACE ± 0.13 .



D.S.CAT No
1390-000206

ASSLY. DRG.
INS.P. INSTRS.

DRAWN	CHECKED	TRACED	TEN. CHD
		<i>[Signature]</i>	<i>[Signature]</i>

CHIEF D'MAN GROUP OFFICER

D.C.I. (A)

APPROVED

DESIGN DEPARTMENT (C)

DESIGNER'S REF.

F. D. 618

PART No.

QX 201

C.I.(A) KIRKEE

9-5-11	DGQA S.O. SEC CHAPIO, PARA 40	DRG SCANNED WITHOUT CHANGE & M/C REPLACED IN SUPERSESSION OF EXISTING DILAPIDATED COPY OF SAME No.	
27-6-87	D.C.I. 34168-A	MATL. AMENDED & D.S.CAT No ADDED.	
10-2-75	D.C.I. 11243-A	DRG. CONVERTED TO 3RD ANGLE	
25-8-74		RETRACED WITHOUT CHANGE.	
		PREVIOUS D.C.I. NOS. U.A. 092-04, 17797-A 20835-A, 21823-A, 27194-A, 21407-A, 23117-A, 21128-A & 130106-A	STW
DATE	AUTHORITY	NATURE	SIG
		AMENDMENTS	IMP. D.O.

DRG SEALED. - 1-9-23

MATERIAL:- STEEL TO SPECN BS 970 Pt 1 1983 070M 20 GR 08 M15

PROTECTIVE FINISH

ESTIMATED Wt. :-

SCALE:- 2/1

11/18