

TYPICAL CHARACTERISTICS OF POLYPROPYLENE

PROPERTY	TEST METHOD	UNIT	TYPICAL VALUE*
MELT FLOW RATE (230°C/2.16kg)	ASTM D1238	g/10 min	8
TENSILE STRENGTH AT YIELD (50MM/MIN)	ASTM D638	Mpa	23
ELONGATION AT YIELD (50MM/MIN)	ASTM D638	%	7
FLEXURAL MODULUS (1% SECANT)	ASTM D790A	Mpa	1100
NOTCHED IZOD IMPACT STRENGTH (23°C)	ASTM D256	J/m	100
HEAT DEFLECTION TEMPERATURE (455 KPa)	ASTM D648	°C	95

\* TYPICAL VALUES NOT TO BE TAKEN AS SPECIFICATION. ALL THE MECHANICAL PROPERTIES AS PER ASTM D638 TYPE 1 SPECIMEN INJECTION MOULDED IN ACCORDANCE WITH ASTM D4101.

MATERIAL:- SEE NOTE.

ALL DIMENSIONS ARE IN MILLIMETRE  
IMPORTANT DIMENSIONS MARKED THUS ⊕  
INFORMATION MARKED THUS ⊕ TO BE MARKED ON

TITLE OF		OPERATION		2016		DATE	
ORDNANCE FACTORY BOARD		R.CHAKRABORTY		DGN	DRN	16/09/16	
RIFLE FACTORY		SCALE		CKD	APPD	No. 1	
ISHAPPORE		N.T.S.					

DRG. NO.:-  
**RFI SK 9941**

SHEET-1  
DF-2

SCHEDULE OF PARTS

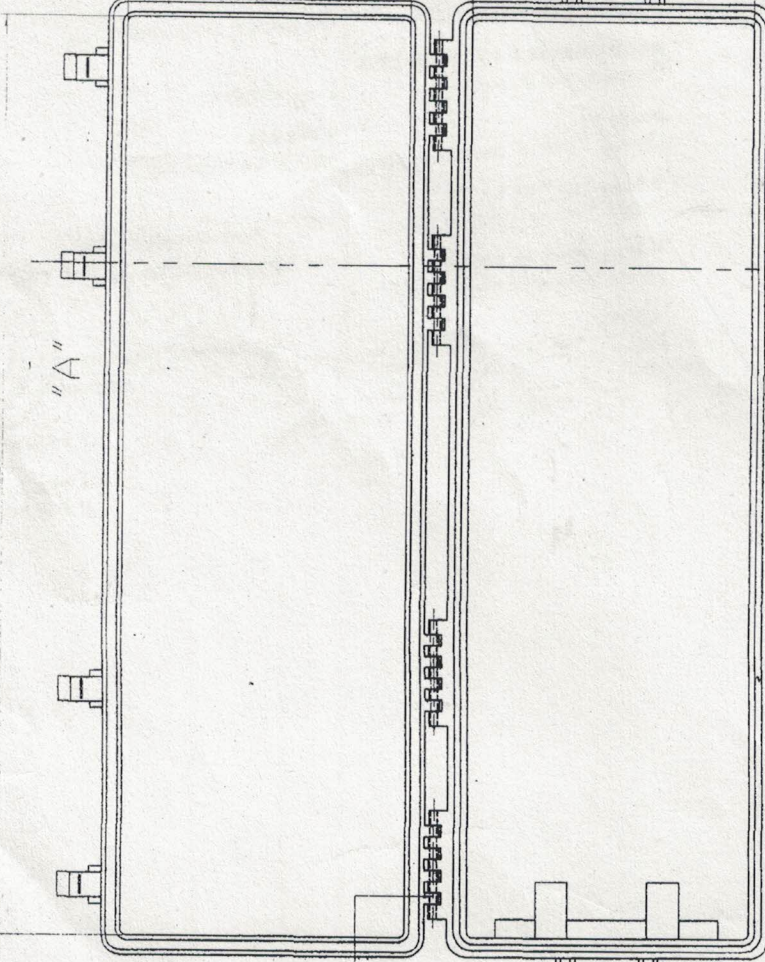
Pt No	DESCRIPTION	No. OFF	MATERIAL	COLOR
1	PANEL TOP	1	POLYPROPYLENE	BLACK
2	PANEL BOTTOM	1	POLYPROPYLENE	BLACK
3	HANDLE	1	POLYPROPYLENE	BLACK
4	HANDLE	2	POLYPROPYLENE	BLACK
5	LATCH	4	POLYPROPYLENE	BLACK
6	LATCH EXTENSION	4	POLYPROPYLENE	BLACK
7	WHEEL	2	RUBBER	GREY
8	HINGE	2	IS:5517-93, 20C15	
9	HINGE	4	IS:5517-93, 20C15	
10	HINGE	4	IS:5517-93, 20C15	
11	HINGE	4	IS:5517-93, 20C15	
12	AIR VALVE	1	POLYPROPYLENE	BLACK
13	GASKET		POLYPROPYLENE	GREY

FOR EXCHANGE SCHEDULE  
IN THIS DATE 28.12.16  
RIFLE FACTORY, ISHAPPORE



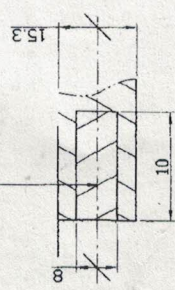
1120

"A"

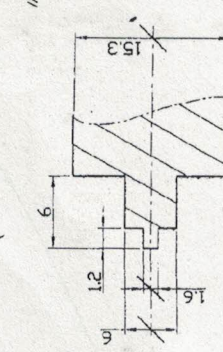


11

13



ENLARGED VIEW OF "X"



ENLARGED VIEW OF "Y"

NOTE:-

- 1) BOX SHOULD BE WATER PROOF.
- 2) ALL CORNERS OF THE BOX SHOULD BE ROUNDED.
- 3) TEXTURE ON BOTH PANELS SHOULD BE AS PER SAMPLE.
- 4) SAMPLE TO BE APPROVED BEFORE BULK SUPPLY.

FOR A CERTIFIED COPY OF  
 DRAWING/DETAILS/STAMPING  
 LAYOUT/GAUGE SCHEDULE  
 AT THIS DATE 16/09/16  
 BY/APPD  
 RIFLE FACTORY, ISHAPORE

LOCKING LUG

SEC:-"A-A"

MATERIAL:- SEE SHEET NO. 1.		ALL DIMENSIONS ARE IN MILLIMETRE IMPORTANT DIMENSIONS MARKED THUS ⊕ INFORMATION MARKED THUS ⊕ TO BE MARKED ON	
TITLE OF	OPERATION	2016	NAME
ORDNANCE FACTORY BOARD RIFLE FACTORY ISHAPORE	SCALE	DGN	R:CHAKRABORTY
	N.T.S.	CKD	16/09/16
		APPD	
DRG. NO.:-		RFI SK 9941	
PLASTIC MOULDED BOX		SHEET:-2	
SEDR. 5.56mm ASSAULT RIFLE & GHATAIK		DF-2	