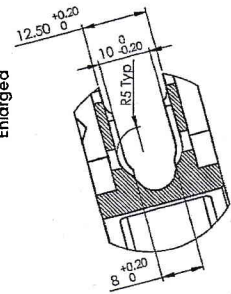
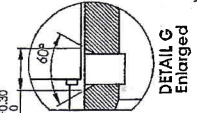
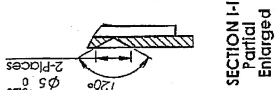
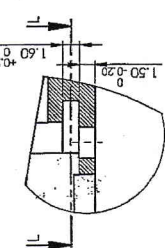
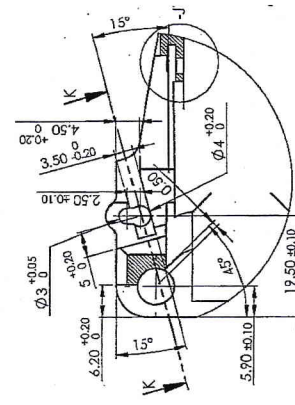
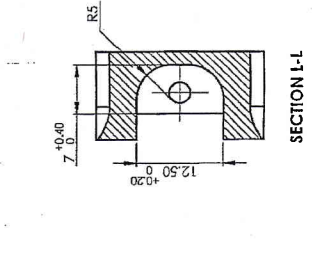
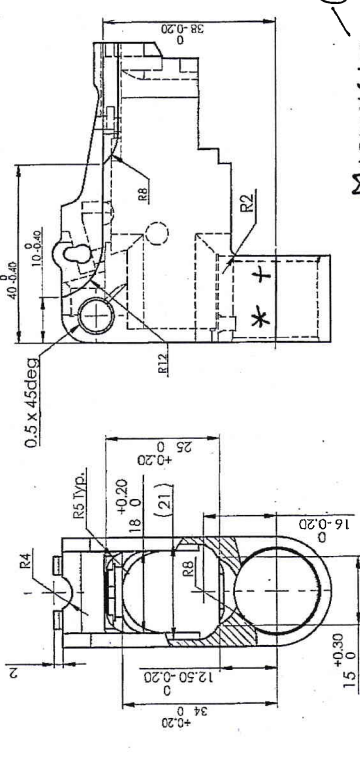
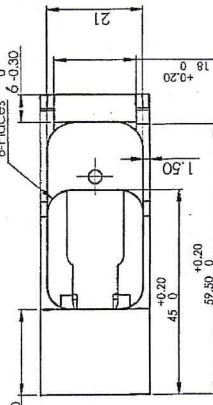
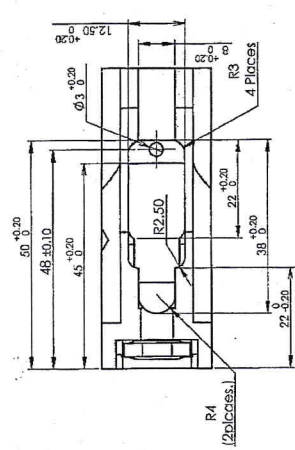
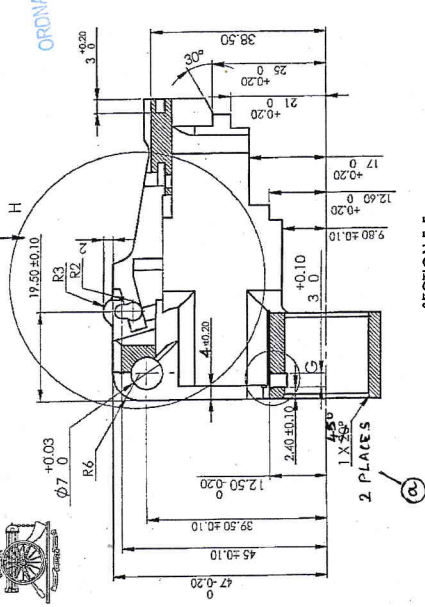
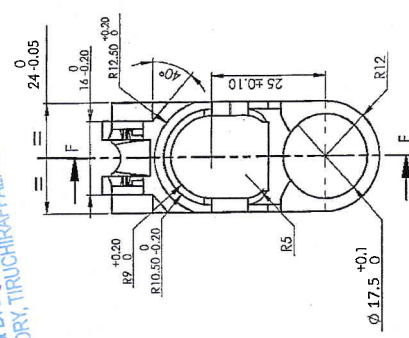
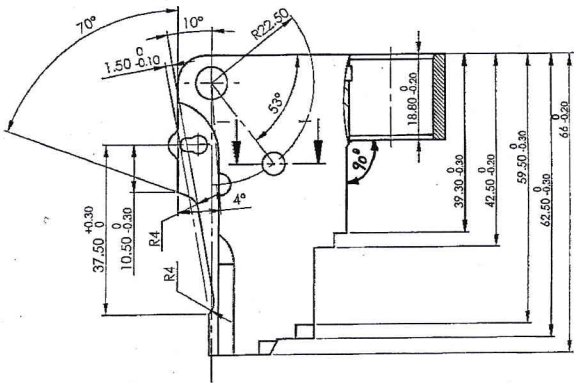
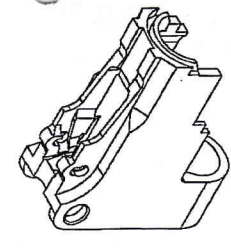


UNCONTROLLED COPY
 CERTIFIED CORRECT COPY OF APPROVED
 DRAWINGS AT THIS DATE: 04.10.22
 DESIGN & DRAWING OFFICE,
 ORDNANCE FACTORY, TIRUCHIRAPPALLI-620 016.



Material: Steel
 BS 570 Pt.1 1983 Gr 709 M40 (En19)
 BS 570 Pt.1 1983 Gr 708 M40 (En19A)
 BS 570 Pt.1 1983 Gr 817 M40 (En24)
Hardness: 290-350 HV
Unstressed Dimensions as per IS2102 (MED)
Material for Casting:
 BS 3146 PART-1, 1974, Class 5, Grade A
 Non Stressed Component
Radiographic Test as per ASTM-E-192
Acceptance Standard:
 Gas hole & Foreign Material: Level-3
 Shrinkage (All Types): Level 3
Notes:- for Casting
 Tolerances as per IS 11146 Class-I
 Flatness Tolerances: ±0.1 / 25.4mm
 Casting Radius 0.5 mm

SUB: Rear Sight Block - S4	SCALE: NTS
FOR: Barrel Assy	OPG: 1
OF: TRICHY ASSAULT RIFLE	Weight (g): 118.49
DES REF. NO.: K-1202*3	SHEETS: 1
DRG. No.: TEND - 2634 * 2	SHEET No.: 1
ORDNANCE FACTORY TIRUCHIRAPPALLI-16.	

SIGNATURE & DATE:	APPROVED ON:
TRACED:	SIG. & DATE:
DRAWN:	AMENDMENTS:
CHECKED:	
OIC/D&DO:	
OFFICER/PRODN.:	
DW/OFFICER/D&DO:	

- DA.No. 04/21
- DI: 20/01/21
- DA.No. 65/20
- DI: 30/10/20

MARKING :-
 * MANUFACTURER CODE
 + BATCH / YEAR OF MANUFACTURE
 ENGRAVING TO DEPTH OF 0.1MM & HEIGHT 2.5MM.

HOS/PS-2 (A.BA/RAS 2MM)