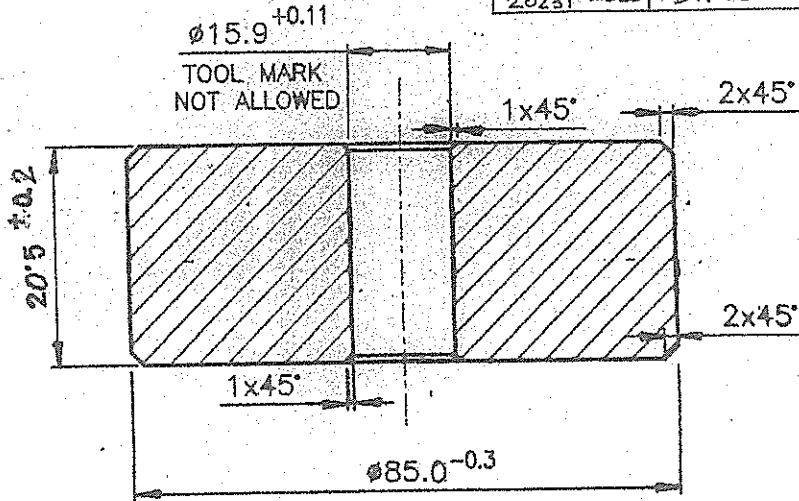


DRG. NO. : **CC-496 E**

TOLERANCE ON UNTOLERATED DIMNS. ARE AS PER IS:2102 MEDIUM CLASS

A M E N D M E N T S			
REV.	DATE	DESCRIPTION	SIGN.
A 212/09	14/7/09	DIM. 29.5 ± 0.1 & WT. 440.0 Gms. WERE DIM. 34.0 ± 0.2 & 390.6 Gms.	[Signature]
B 66/09	10/2/09	DIM 20.5 ± 0.2 WT. 310gms WERE DIM 29.5 ± 0.1 & WT. 440 gms.	[Signature]
C 245/09	25/09/09	DIM. 29.5 ± 0.1 & WT. 440 WERE DIM. 20.5 ± 0.2 AND WT. 310gms.	[Signature]
D 389/2010	24/01/10	DIMN. 20.5 ± 0.2 & WT. 310 gms WERE 29.5 ± 0.1 & wt. 440 gm	[Signature]
E 34/2023	14/02/2023	DIMN. Ø 85 ± 0.3 WAS Ø 85 ± 0.3 ACCORDINGLY DRG. ADV. T.D.E.	[Signature]



~~MAXIMUM WEIGHT~~ 310 GRAMS MAX.

MATL : SS : AI 4212 OR AA6082 OR BS:1474-1987, GR-6082 OR IS:733-83 GR-64430 AS 'D' CONDT. AS 'M' CONDT.

DIMENSIONS ARE IN mm			MATERIAL : AS ABOVE		अजिन्स फैक्टरी अम्बाझरी AMBANANCE FACTORY AMBAZHARI DRG. NO. : CC-496 E
THIRD ANGLE PROJECTION			NOMENCLATURE : SLUG FOR FOR DISTANCE TUBE (SLUG MACHINING OPN.)		
SCALE : 1 : 1			M/C : -		DRG. NO. :
2008	NAME	DATE	STORE : 84mm MARK-III 551		SHEET NO. : 1
DRAWN	[Signature]				NO. OF SHEETS : 1
CHECKED	[Signature]	12/05/08			OPERATION NO. :
JMM/CDD	[Signature]	12/5/08			COMPT. : DISTANCE TUBE
APPVD.					DRG.No.: 5 209 542
JGM/CCS	[Signature]				(OFAJ DRG.No.: FS-2797)