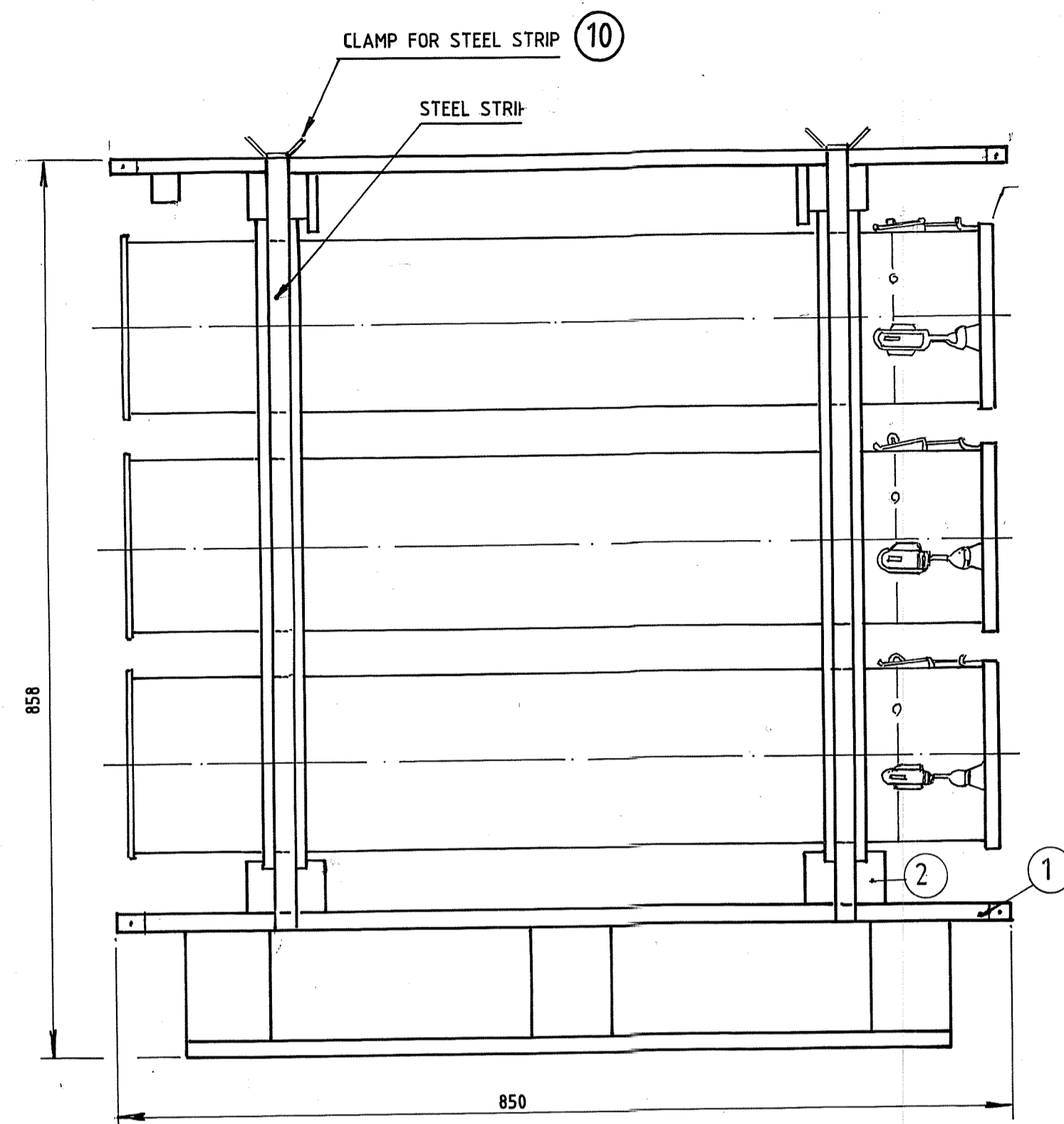
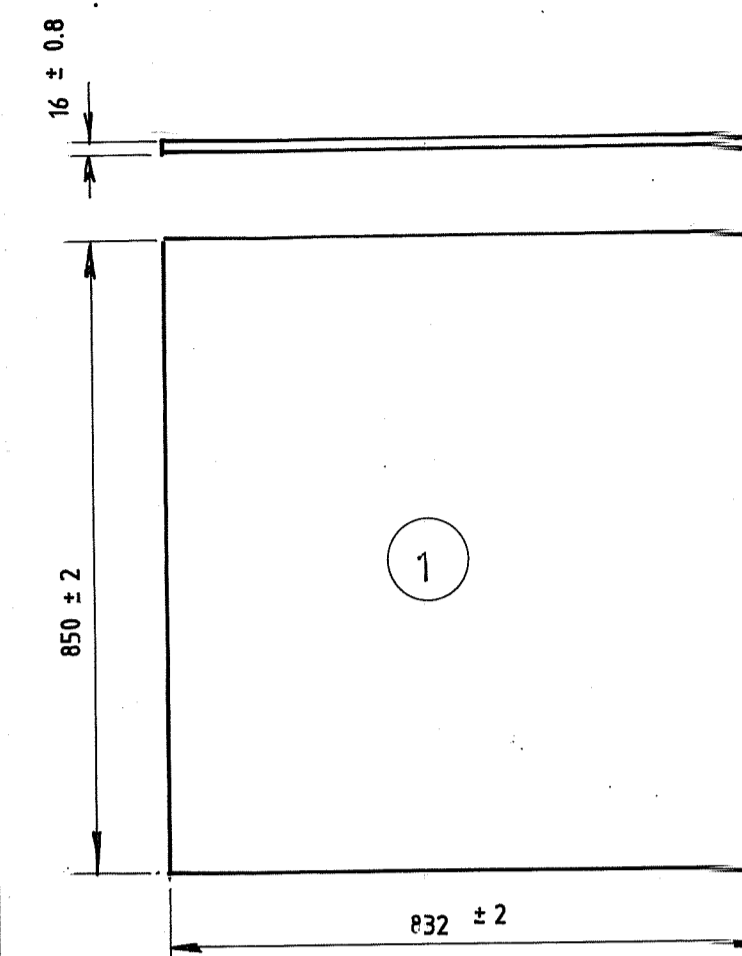


DRG.No.4085564

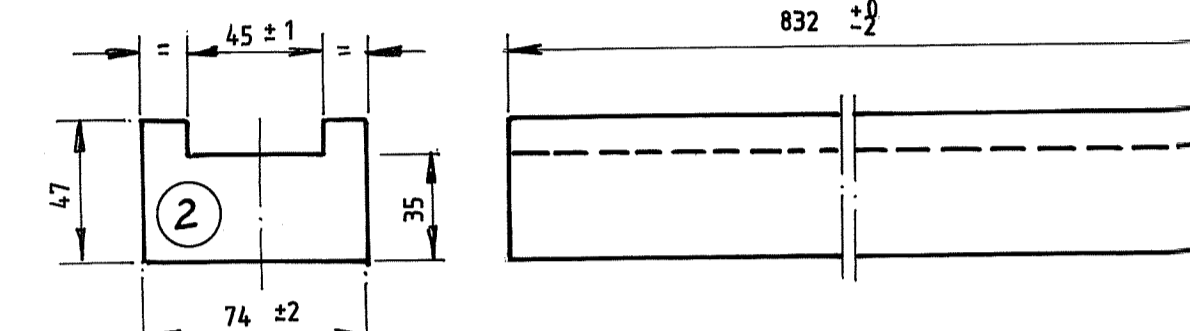
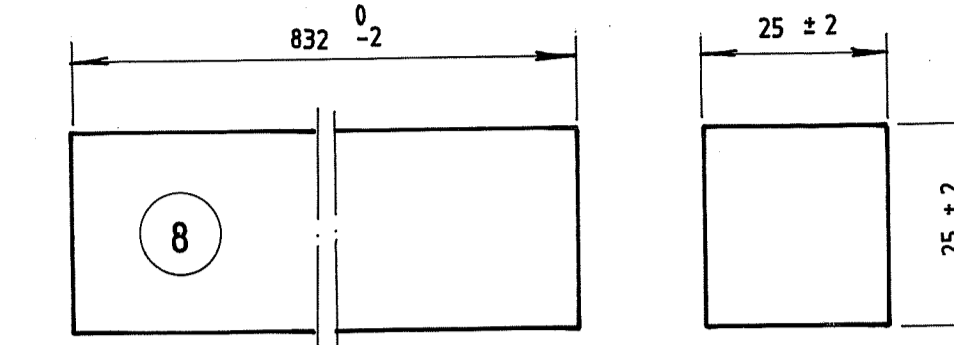


MATL:- PLYWOOD 'AA' MR GRADE I.S.303 DRG.No. 6372192



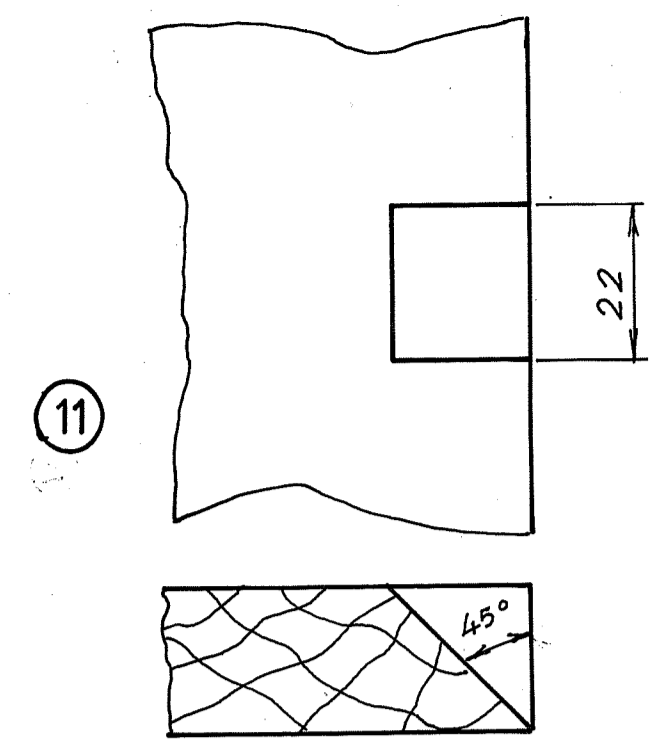
MATL:- TIMBER MANGO

DRG.No. 6384852

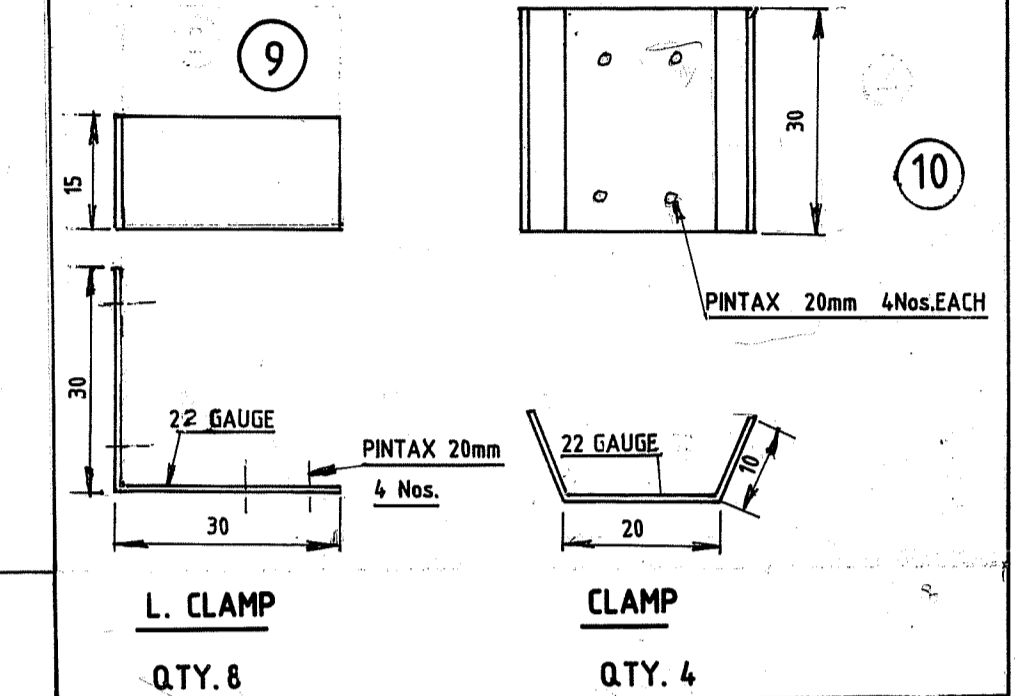


MATL:- TIMBER MANGO

DRG.No. 6372195

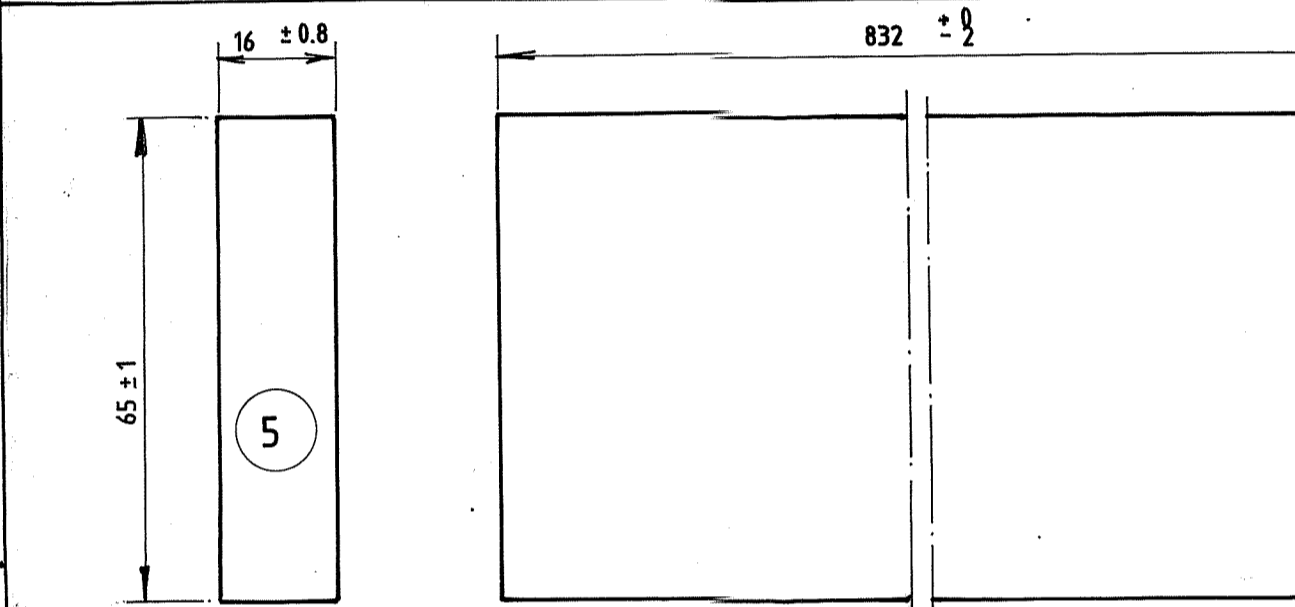


SECTION A-A



L. CLAMP Q.TY. 8

CLAMP Q.TY. 4



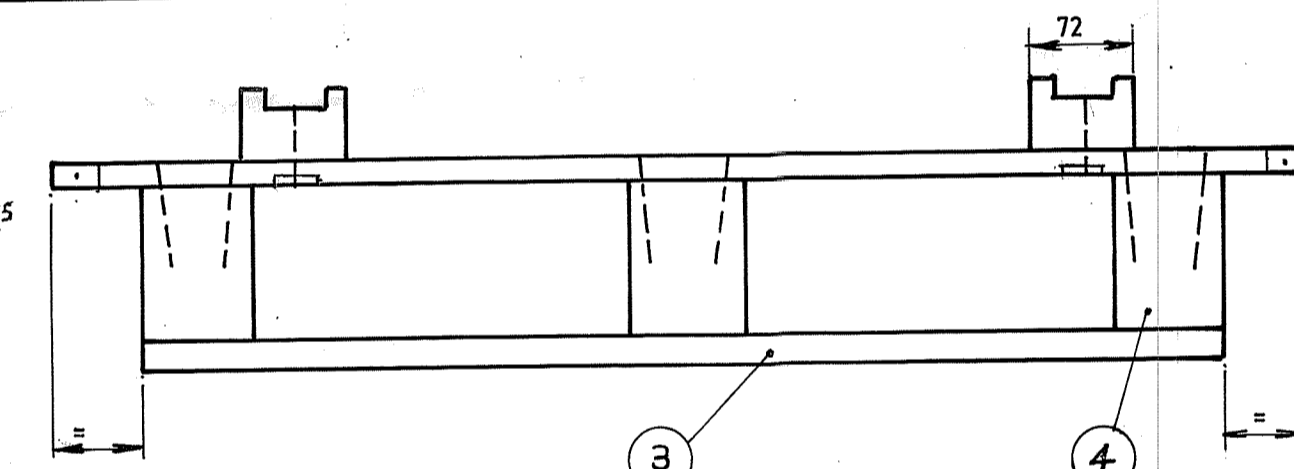
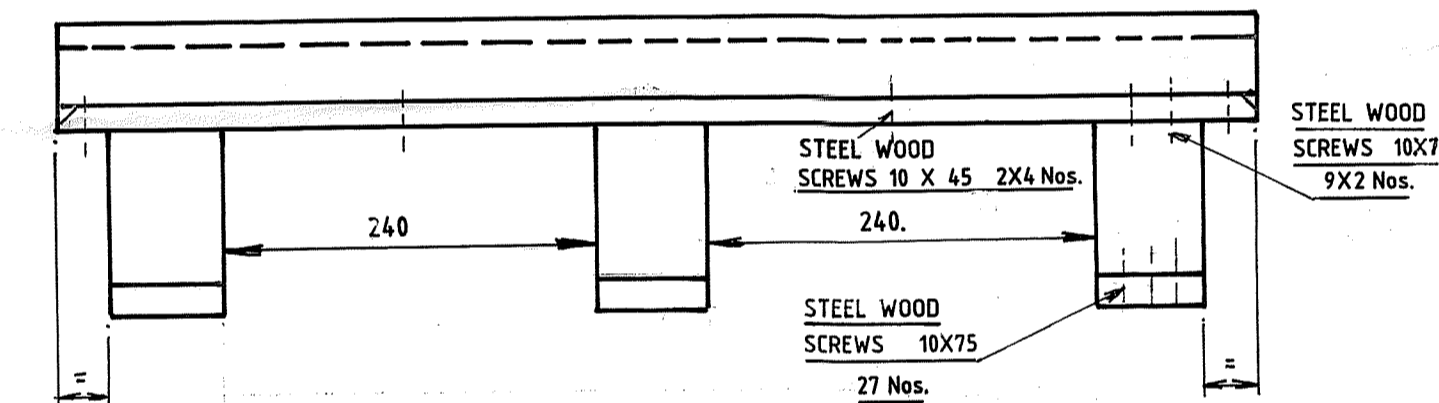
MATL:- PLYWOOD 'AA' MR GRADE I.S. 303 QTY - 2

DRG.No. 6372193

QTY - 4

MATL:- PLY WOOD 'AA' MRGRADE I.S. 303

DRG.No. 6388580



MATERIAL :- TIMBER MANGO TO SPECN. IND/ME/883/(P)(PROV) 1998 DC - 3539 - ME 24 - 10 - 98

PLYWOOD:- PLYWOOD FOR GENERAL PURPOSE MR GRADE, TYPE AA IS 303-1989 THIRD REVISION (AMDT. No.1) REAFFIRMED 1993

PAINTING:- PAINTED WITH PRIME COAT IF PAINT READY MIXED, QUICK DRYING MATT FINISH FOR GENERAL PURPOSE, RED OXIDE (ISC : 446 TO IS: 5-1978) REAFFIRMED 1991 CONFORMING TO SPEC. IS 168 : 1993 (THIRD REVISION)

FOLLOWED BY A COAT OF PAINT OLIVE GREEN (ISC:220 TO IS:5 - 1978) REAFFIRMED 1991 TO SPEC. IS168 - 1993 (THIRD REVISION)

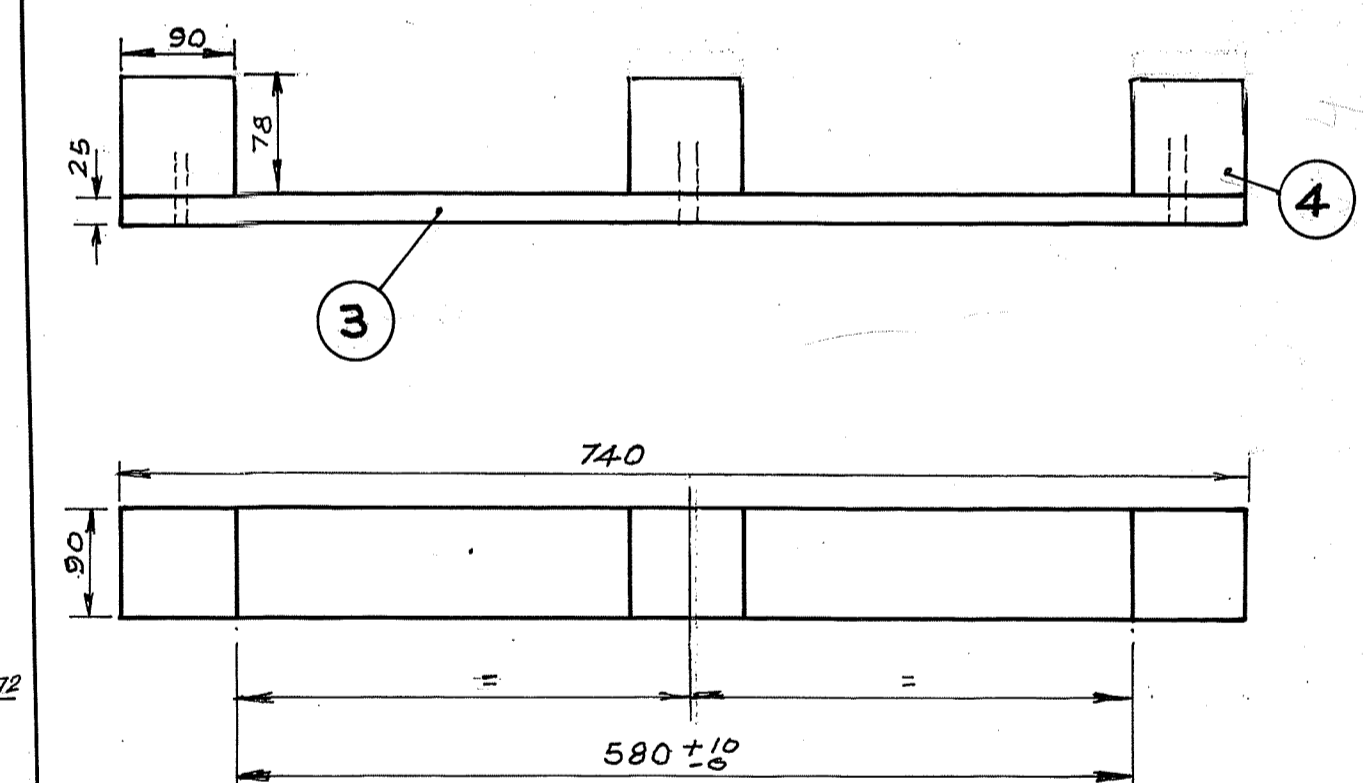
METHOD OF APPLICATION FOR RED OXIDE AND PAINT OLIVE GREEN IS BY BRUSHING/SPRAYING/DIPPING.

JOINTS :- ALL THE JOINTS IN THE PALLETS BE INITIALLY GLUED WITH FEVICOL AND THEN SCREWS DIPPED IN FEVICOL BE USED.

STEEL SCREWS:- TOP ASSEMBLY No. 8 X 45 mm - 24 Nos. No. 8 X 35 mm - 16 Nos. BOTTOM ASSEMBLY No. 10 X 75 mm - 45 Nos. WOOD SCREWS SPECN. IS 6760-1972

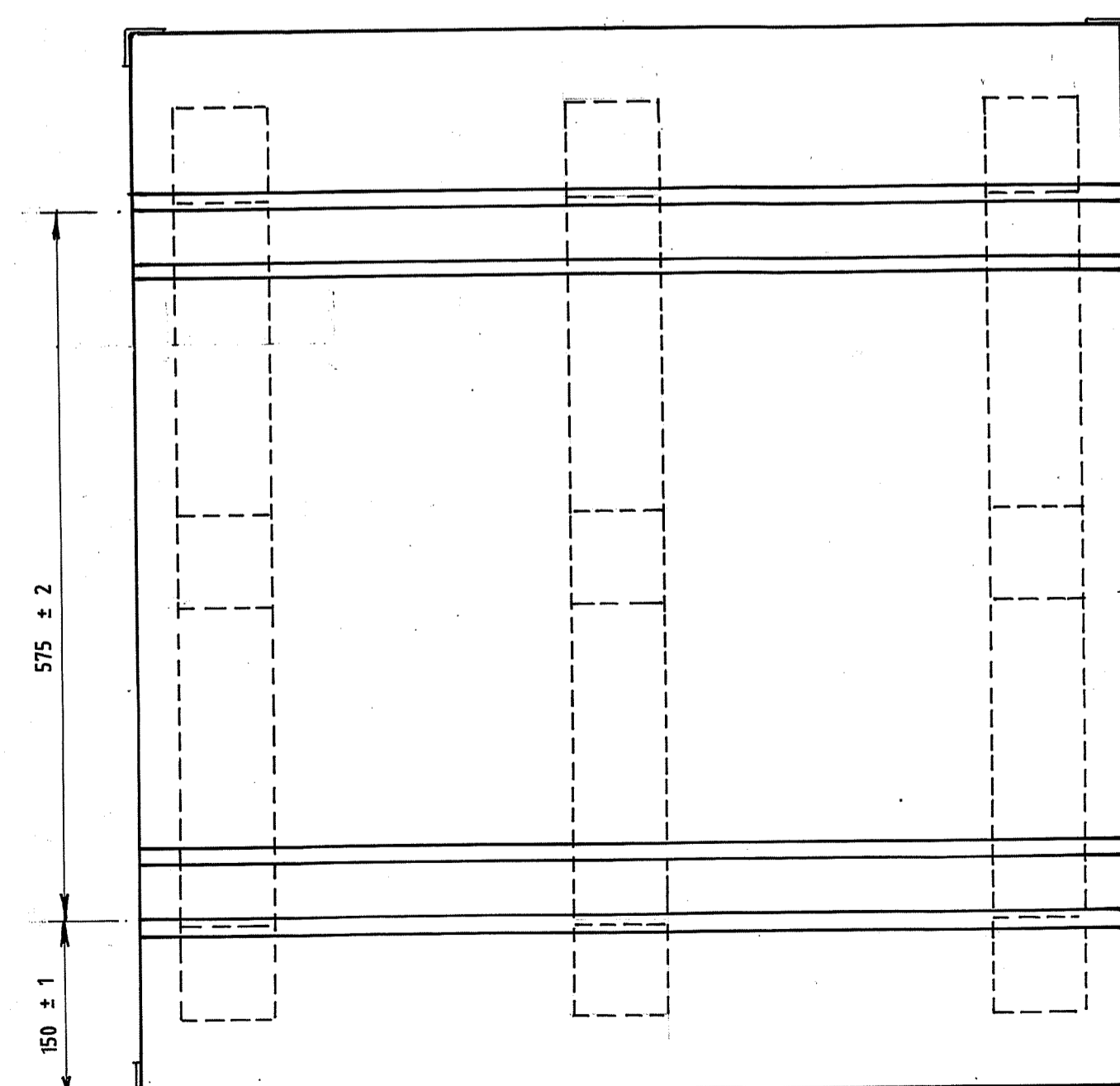
CLAMPS:- (a) FOUR CLAMPS ON THE TOPPLATE AND GROOVES. (22 mm WIDTH) ON THE TOP AND BOTTOM PLATE BE PROVIDED PART No. 10 & 11

(b) TOP & BOTTOM PLYWOOD SHEETS BE PROVIDED WITH METALLIC CORNERS TO AVOID PEELING OFF. OF THE LAYERS. 0.8 mm THICK ALUMINIUM SHEET (PART No. 9)

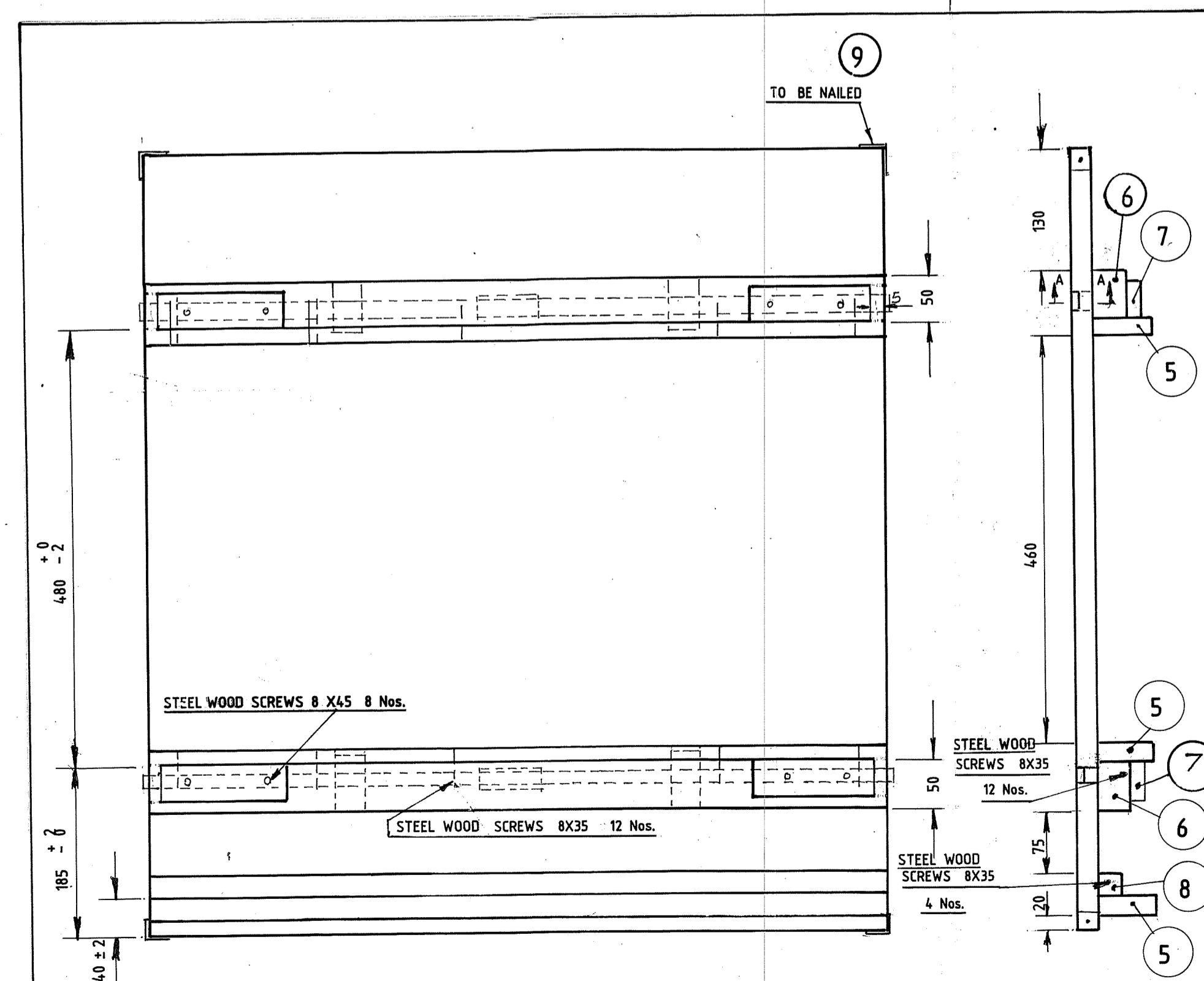


MATL:- TIMBER MANGO

DRG.No. 5177735

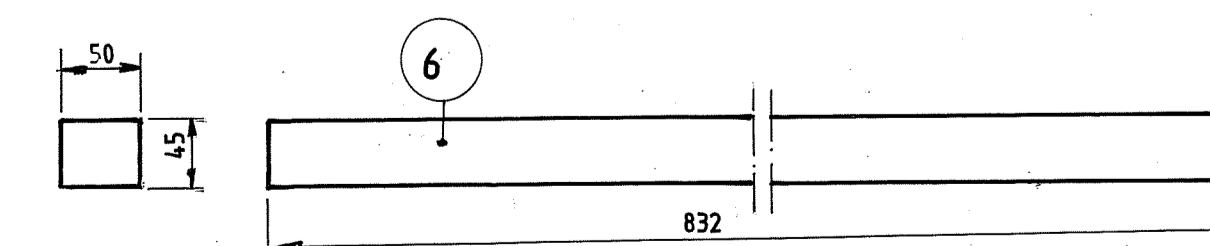


BOTTOM ASSEMBLY



TOP ASSEMBLY

SL.No.	PART No.	ITEM	MATERIAL	No.OF PCs
1.	4	DISTANCE BLOCK	TIMBER MANGO	9
2.	1	TOP & BOTTOM SHEET	PLYWOOD	2
3.	2	GROOVED SEAT	TIMBER MANGO	2
4.	3	BOTTOM PLANK	TIMBER MANGO	3
5.	5	SIDE GRIP	PLYWOOD	3
6.	6	SUPPORT	TIMBER MANGO	2
7.	7	TOP GRIP	PLYWOOD	2
8.	8	SUPPORT	TIMBER MANGO	1
9.	9	SIDE CLAMP	ALUMINIUM	8
10.	10	TOP CLAMP	ALUMINIUM	4
11	11	GROOVE CUTTING	-	-



MATL:- TIMBER MANGO

2	4-7-2000	DRAWING AMENDED PICTORIALLY	
1	2.7.1999	MATERIAL & PAINT SPECIFICATION AMENDED	
ISSUE No.	DATE	NATURE OF AMENDMENT	REMARKS
DIMNS. ARE IN MM			
UNIT LOAD FOR 155 MM CHARGE 8 & 9			DRN 15.03.99
SCALE :- 1 : 5			CHD 15-3-99
CORDITE FACTORY, ARUVANKADU			APPD 14.3.99
			AUTHD 17-3-99
			DRG.No. 13 S.002