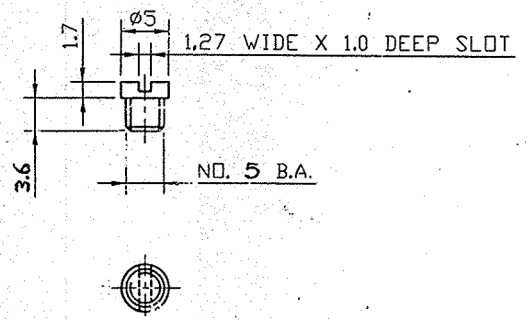
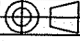



DIMENSIONS ARE IN mm.
 UNTOLERATED DIMENSIONS AS PER IS:2102 (MED)



MATL:
 STEEL BS 970 PT. 1-1983 (EN 8)

FINISH:-
 PHOSPHATED TO SPECN. WPN/GEN/3
 CLASS II OIL FINISH

PART NO.	DESCRIPTIONS	NO OFF	MATERIAL	TREATMENT	REMARKS
	 SIGNATURE & DATE. TRACED DRAWN <i>SP</i> CHECKED <i>J. Sundar</i> OIC/D&DO <i>V. Vallurathan</i> OFFICER/PRODN. OFFICER/D&DO				SUB: SCREW SPRING BAND BACK SIGHT FOR: .315" SPORTING RIFLE OF: DES. REF. NO. SP-9 DRG. No.: 29 P 0009 SCALE 2:1 STORE DRG. NO. OPERATION NO.
AMENDMENTS	SIG. & DATE	 ORDNANCE FACTORY TIRUCHIRAPPALLI-16.		SHEETS: 01	SHEET No: 01
	APPROVED ON. 10/04				